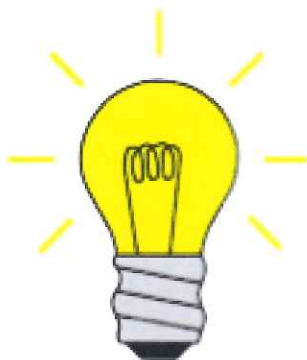
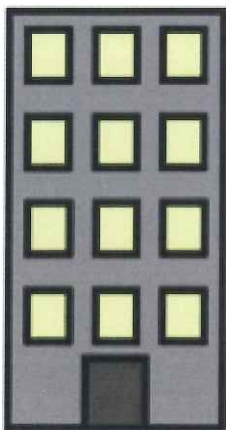


## **Attention Bloomfield and Glen Ridge Residents:**

**Are you behind in your rent, utilities, or mortgage and getting help will prevent you from becoming homeless?**



**Location: 1 Municipal Plaza, Room 213, Bloomfield NJ  
07003**

**[www.bloomfieldwpnj.com/health-human-services/](http://www.bloomfieldwpnj.com/health-human-services/)**

**To inquire about obtaining an appointment please  
contact the Bloomfield Human Services Division at 973-  
680-4017**

**TTY: 1-800-852-7899**

**Public Health**  
Prevent. Promote. Protect.

**Township of Bloomfield  
Department of  
Health & Human Services**

**Receive important Health & Human Services updates & emergency notifications on your mobile phone or email Sign up for NIXLE at: [www.nixle.com](http://www.nixle.com); [Follow us on Twitter: @BloomfieldHDNJ](#)**

03/17