

SUMMER CAMPS

INFORMATION

SCHEDULE

- Camp will be offered for 5 weeks: July 6 - August 7, Monday - Friday, 9 AM - 3 PM
- Maple 2020 Summer Kids Camp is offering 5 mornings from 9-11:30 AM or 5 after noons from 12:30-3:00 PM
- AM and PM Extended Camps are not available, the only hours we are open are 9 AM - 3 PM.
- Campers must be enrolled for the full 5 weeks. Enrollment for less than 5 weeks is not available. You may choose to not attend every day but are responsible for camp fees for the full 5 weeks.

WHY ARE WE ONLY OFFERING A 5 WEEK OPTION?

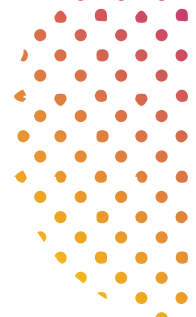
- As you can see from this lengthy document, there are a lot of details that go into camp this summer. By limiting the number of individuals over the summer, we significantly reduce our circles of exposure.

CAMP FEE

- Camp Fee is for 5 weeks of camp
- Half of your camp fee will be due upon registering; you will be billed the remainder of the fee on June 25
- If you have already paid for camps previously and have a household credit, we will transfer your payments towards this new enrollment.

WHAT WILL CAMPERS BE ABLE TO DO? ALL THE WAYS CAMP WILL BE AMAZING AND MAGICAL!

- For returning campers who know and love Palatine Park District Camps, many favorite activities and experiences will be the same, and some things will look very different.
- Each group will have their own indoor and outdoor meeting spaces, as well as their own arrival/dismissal spot. There will be no interaction between groups of 10 until we reach Phase 4 of the Restore Illinois Plan. Even on rainy or thunderstorm days, each group will have their own classroom and sets of art supplies, games, etc, in order to maintain separation between groups.
- Activities will happen within a schedule that ensures that shared areas are either sanitized or sufficiently vacant between groups that viral transmission from surfaces is not a concern.
- Because we cannot allow larger groups of campers to mix, some larger group games and activities will not be able to be played this summer. Time for unstructured free



play in designated areas within the camper groups of 10 children will still be an important part of each day.

- Instead of gathering for an all camp morning meeting, individual groups of 10 will start their days with a morning circle to greet each other and get ready for a great day at camp.
- While our 2020 Summer Day Camps and Sports & Adventure Camps will NOT be going on field trips this summer, we are looking at other small trip possibilities within Palatine Park District facilities as Restore Illinois guidelines allow. Parents will be notified ahead of time of any trips.
- Camps will not be swimming daily this summer but will be able to enjoy a variety of water activities.

WHO ARE THE STAFF?

- One of the strengths of Palatine Park District Camps is our amazing staff team!
- Each group of 10 campers will be led by 1 or 2 adult staff who have experience working with children. This summer, our staff will be experiencing additional training on safety and health protocols in compliance with the CDC and Restore Illinois Guidelines.



HOW WILL CAMPERS BE GROUPED?

- We plan to serve as many campers as possible during the current Phase of the Restore Illinois Guidelines allow. If our state progresses to a new Phase, camp spots will be made available.
- Campers will be put into groups of 10.
- Campers will stay in the same group of 10 children and 1 to 2 counselors all summer. There will be no mixing between groups at all until Phase 4, such that children and staff are only exposed to those in their immediate group.

WHAT HEALTH MEASURES IS PALATINE PARK DISTRICT TAKING TO PROTECT CAMPERS AND STAFF?

We will be following guidelines put forth by the CDC and Restore Illinois Plan.

- Each group will have their own indoor and outdoor meeting spaces, as well as their own arrival/dismissal spot. There will be no interaction between groups of 10.
- Shared outdoor spaces that are difficult to clean will be enjoyed on a scheduled rotation such that significant time passes between groups of users, and toys that can be disinfected will be.
- We will be following all recommended cleaning procedures, including cleaning of bathrooms, door handles, and any high touch surfaces throughout the day.
- All staff and campers will wear a mask when indoors and when a safe social distance cannot be maintained. Current health guidance allows for masks to be removed when outside and at least 6 feet from others. For the safety of campers and our staff working in the summer heat, we will be encouraging mask breaks outside, when they are at a safe distance from others.
- Campers and staff will wash hands with soap and water frequently, and hand sanitizer will also be available in all activity areas.



- We will have contactless drop off and pick up for campers. Parents will not be allowed to exit their car at drop off or pick up.
- Staff who feel sick or who have a temperature will stay home (and will contact their doctor for guidance on testing), and we have plans for back-up staff.
- Strict adherence to all guidelines for the operation of camps does not guarantee a risk-free camp environment. All campers and staff are at risk for being exposed to coronavirus and contracting COVID-19. Our operations are intended to minimize and contain that risk as much as possible.

DO CAMPERS NEED TO WEAR MASKS OR DISTANCE FROM EACH OTHER?

- Each group of 10 campers and 1 to 2 staff will operate like a family unit. Children are NOT expected to keep physical distance from one another within their group of 10. Of course we will enforce handwashing and other good hygiene measures, but we will not prohibit children from interacting within their group. Unnecessary, excessive contact (like games that involve hugging or wrestling or whispering into ears) will be redirected to other ways of playing, but campers should experience social interaction within their group as mostly normal.
- All campers and counselors will wear a mask when within 6 feet of others.
- If your child is unable to wear a mask when it is required, he /she will not be able to remain at camp.
- You may want to consider sending your child with an extra mask in case it gets dirty or breaks while at camp.

WHAT HAPPENS ON RAINY DAYS?

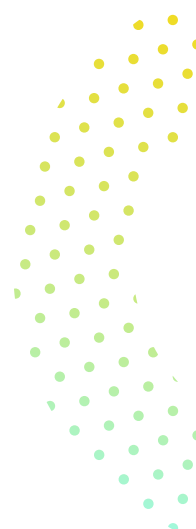
- We will operate as usual in the rain, enjoying primarily outdoor activities when possible.
- During thunderstorms, campers will be indoors in their assigned classrooms (remaining in their group of 10 campers 1 or 2 staff).

WHAT HAPPENS IF THERE IS A COVID POSITIVE CASE?

- If a child presents with a fever, cough, or other COVID-19 symptoms, the child will be isolated from the camp with a staff member and we will contact parents to pick up the child and contact the Health Department and follow their guidance.

There will be a lower threshold for sending a camper home for relatively mild symptoms like persistent coughing or sneezing. While these may be allergy induced, coughing and sneezing can be infectious and even mild illness or allergies may result in the need for a doctor's note to return to camp.

- If a child, staff person, or household member of a camper or staff person has a COVID-19 positive test, we will notify the Health Department and follow their guidance for cleaning, closure of individual groups, and notification of families.
- Families and staff are required to notify the Palatine Park District immediately of any COVID-19 positive case in their household while camp is open, or in the 3 days after camp ends for the season.





WHAT WE ASK OF YOU AS PARENTS

We are in this together! We are on your team, trying to give kids a healthy, somewhat normal summer. We need all enrolled camp families to be on board with the following:

- Palatine Park District will not monitor, judge, or take action on each family's level of social distancing from others outside of camp. However, we ask that as much as possible, if you choose to enroll in camp that you choose to make camp the primary exposure your family has to others (not including essential workers in their workplace). Families who plan to have regular playdates and other non-essential direct contact with others outside of camp are more likely to put a whole group at risk of exposure and possible closure. In order for us to keep camps open, we need families to limit your exposures as much as you can.
- Please do not send your child to camp if he or she is sick.
- We will all have new routines to learn. We will need parents to read the information we send and comply with all policies and directions. We can't do this without all of us on board to participate in communication.
- We have some small requests for supplies you will need to provide: a water bottle for your camper with a covered mouthpiece, and a completely disposable lunch and snack for every day.

OTHER THINGS TO CONSIDER THIS SUMMER

Children with medical conditions including asthma, diabetes, and compromised immune systems are recommended by the CDC to not attend camp. Children who live with vulnerable household members are also recommended to not attend camp. Please speak with your doctor about camp if your child or any household member has a chronic medical condition, or if you have a household member over 65 years old. We will not restrict children from registering for camp if they have a chronic medical condition or live with an at-risk household member.

- Camp will be different this summer and this will look different for each child, and some campers may enjoy and benefit from the changes to camp. Things to consider as you think about what does and does not work for your child:
- Our routines will look very different from what your camper may remember or be expecting.
- We have no flexibility with activity choices and schedules. Campers will still enjoy almost all of the usual camp activities, but their choices between preferred activities and play areas throughout each day will be substantially limited. Campers will need to stay with their group, and group activities and use of specific spaces are scheduled and not flexible due to the need for disinfection of spaces between groups, per CDC and Restore Illinois regulations.
- Adults will be wearing masks, and we know that may make understanding and interpreting communication and social cues very difficult.
- Our behavior policy has been modified and reflects a new, zero tolerance policy for behaviors such as spitting, biting or scratching due to the possible transfer of the Covid-19 virus.
- We also will have zero tolerance for anyone refusing to wear a mask, not using proper PPE, or who is not able to remain at an acceptable social distance (6 ft apart).

REGISTRATION AND REFUND POLICY

How to register on-line

- We know that many families have complicated work schedules right now, and since our facilities are unable to be open for in-person registration, all camp registration will be on-line only.
- To be ready when registration begins, please be sure that your household is active and properly set up. If you have any questions regarding this, please contact Customer Service Manager, Christine Hubka at CHubka@palatineparks.org.

REFUND POLICY

- Full refund if a withdrawal request is received prior to Saturday, June 26th.
- Requests received after June 26, but prior to the end of the second day of camp, Tuesday, July 7, will receive a 50% refund.
- All refunds will be processed as household credits unless requested back to original form of payment.
- Medical and special situation refund requests are subject to review and the discretion of the Superintendent of Recreation