

FOR LEASE

5495 S. Rainbow Blvd - PMI Professional Building



IREPLV, LLC

6970 S. Cimarron Rd, Ste 220

Las Vegas, NV 89113

702.829.8582

IREPLV, LLC

Commercial Real Estate

Brokerage • Development • Property Management



MIKE YOUNG

myoung@ireplv.com

702.604.6209

LEASE DETAILS

5495 S. Rainbow Blvd
Las Vegas NV 89118

PROPERTY HIGHLIGHTS

- CONVENIENT ACCESS TO I-215
- CLASS B MEDICAL OFFICE BUILDING
- ACROSS FROM SPRING VALLEY HOSPITAL
- MOUNTAIN VIEWS
- SURROUNDED BY SHOPPING, RESTAURANTS,
& RESIDENTIAL COMMUNITIES
- GREATER THAN 4:1 PARKING RATIO

AVAILABLE SPACES

<u>SPACE</u>	<u>SIZE</u>	<u>SPACE/USE</u>
2nd Floor	2,285 RSF	Medical
2nd Floor	6,000 RSF	Medical



IREPLV, LLC
6970 S. Cimarron Rd, Ste 220
Las Vegas, NV 89113
702.829.8582

IREPLV, LLC
Commercial Real Estate
Brokerage • Development • Property Management



MIKE YOUNG
myoung@ireplv.com
702.604.6209

AERIAL MAP



Spanish Trail
Country Club

W. Hacienda Ave



Spring Valley Hospital

5495 S. Rainbow Blvd ●

W. Russell Rd

S. Durango Dr

S. Buffalo Dr

Rainbow Blvd

W. Jones Blvd



Southern Hills
Medical Center

W. Sunset Rd

W. Sunset Rd



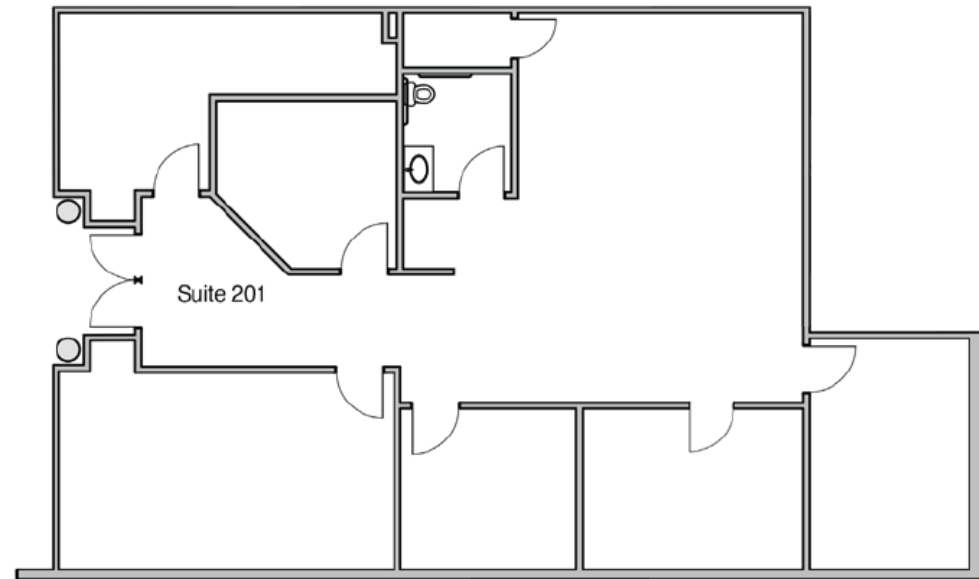
IREPLV, LLC
6970 S. Cimarron Rd, Ste 220
Las Vegas, NV 89113
702.829.8582



MIKE YOUNG
myoung@ireplv.com
702.604.6209

PMI PROFESSIONAL BUILDING

5495 S. Rainbow Blvd, Ste 201 - 2,285rsf



IREPLV, LLC
6970 S. Cimarron Rd, Ste 220
Las Vegas, NV 89113
702.829.8582

IREPLV, LLC
Commercial Real Estate
Brokerage • Development • Property Management



MIKE YOUNG
myoung@ireplv.com
702.604.6209

PMI PROFESSIONAL BUILDING

5495 S. Rainbow Blvd, Ste 202 - 6,000rsf





IREPLV, LLC
Commercial Real Estate
Brokerage • Development • Property Management



FOR LEASE

5495 S. Rainbow Blvd Las Vegas NV 89118

MIKE YOUNG
myoung@ireplv.com
702.604.6209