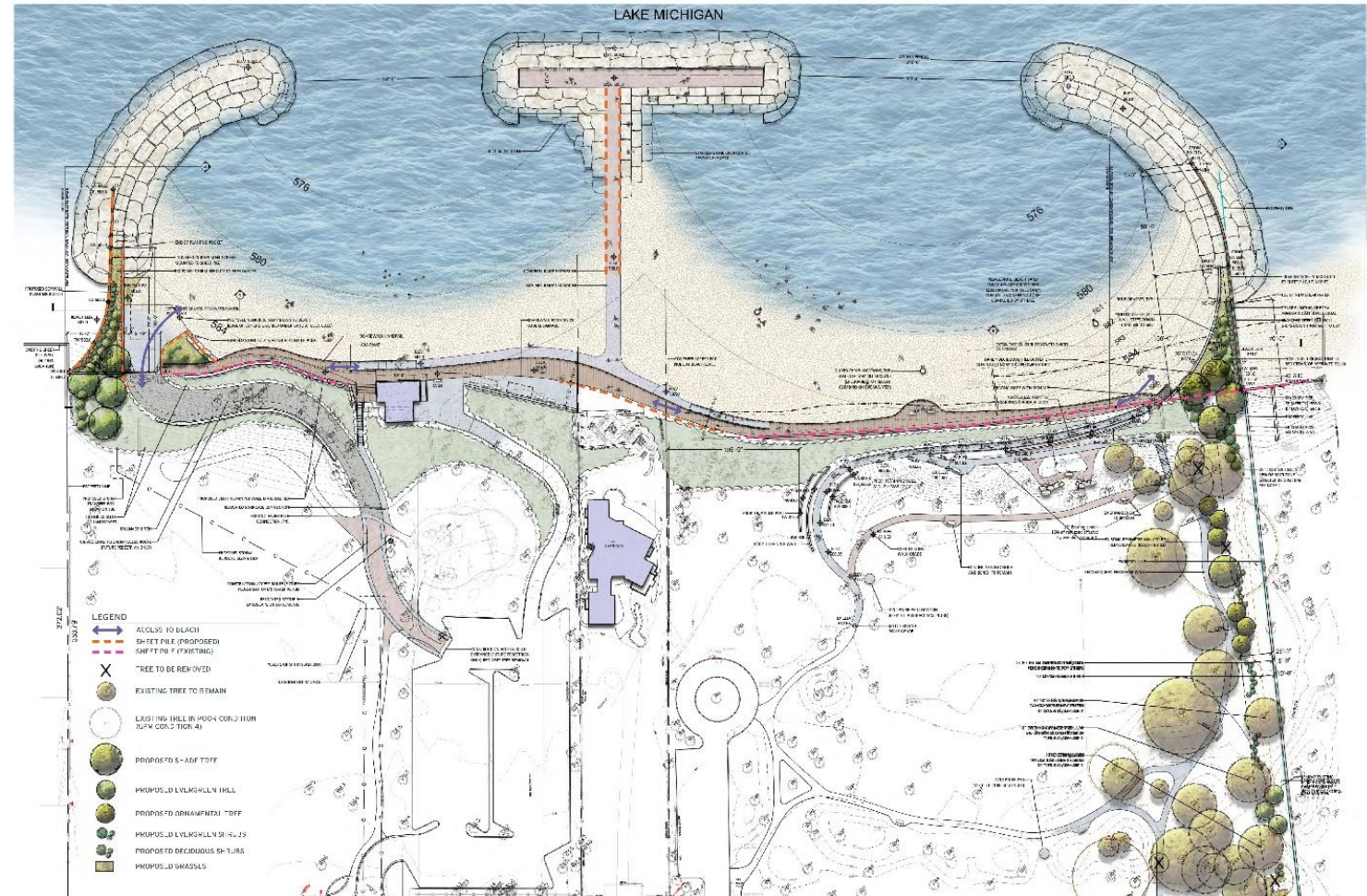


Elder & Centennial Plan Components

These major components are required to build back the infrastructure to create the vision that imagined in the Winnetka Waterfront 2030 Plan

- Breakwaters with planter pockets
- Center Island “T” pier and walkway
- Sand nourishment
- Relocated stormwater discharge
- Elder north access route
- Bluff Restoration



ELDER/CENTENNIAL BREAKWATER SCREEN

ELDER & CENTENNIAL DESIGN DEVELOPMENT | OVERALL PLAN

WINNETKA, ILLINOIS

PREPARED FOR:
DOWNSIDE GROUP
PROJECT TEAM:
LAKOTA
DATE:
SEPTEMBER 9, 2017

THE
LAKOTA
GROUP