

News Release

Date: November 4, 2025

District: [08-1J850](#)

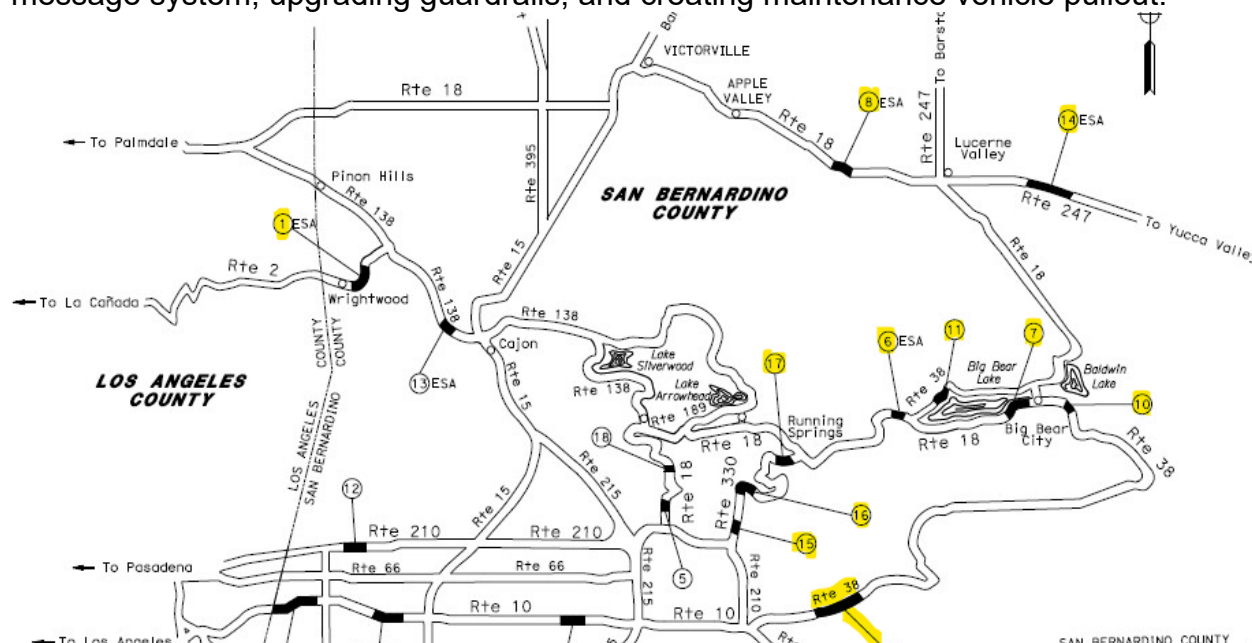
Contact: [Jaspinder Hampal](#)

Phone: 909-553-6837

For Immediate Release

Install Changeable Message Signs Various Locations in San Bernardino County November 5-14, 2025

SAN BERNARDINO – The California Department of Transportation (Caltrans) continues the \$14.2 million project funded by SB1 to install changeable message sign system (CMS) at various locations. These signs will be placed along Interstate 10 (I 10), State Route (SR) 2, SR 18, SR 38, SR 210, SR 247 and SR 330 in San Bernardino County. The project will include furnishing sign structures, installing the changeable message system, upgrading guardrails, and creating maintenance vehicle pullout.

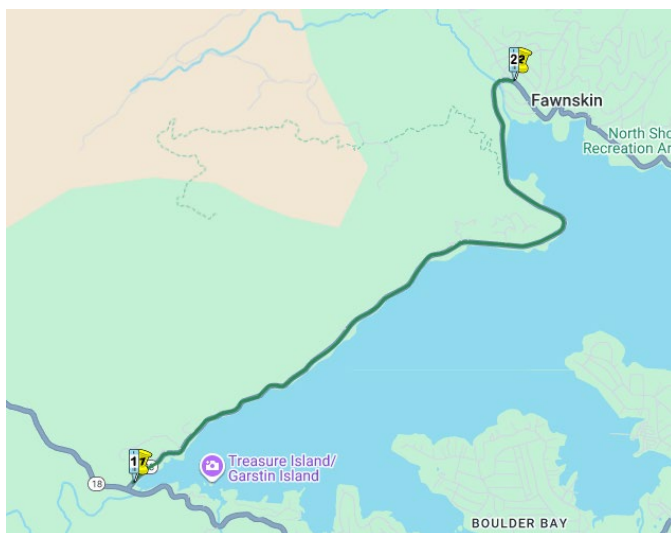
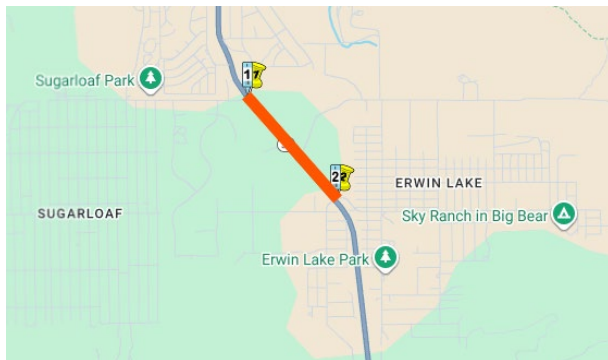
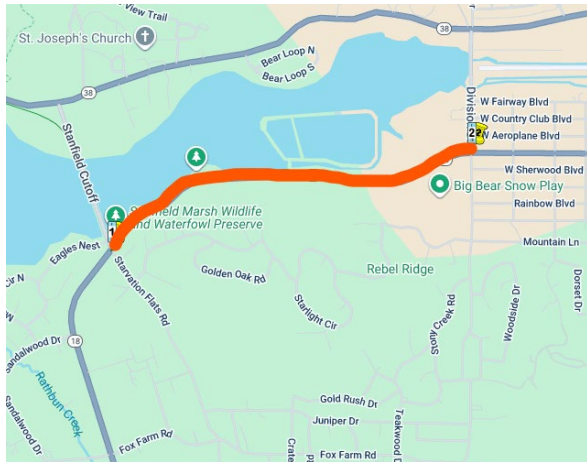


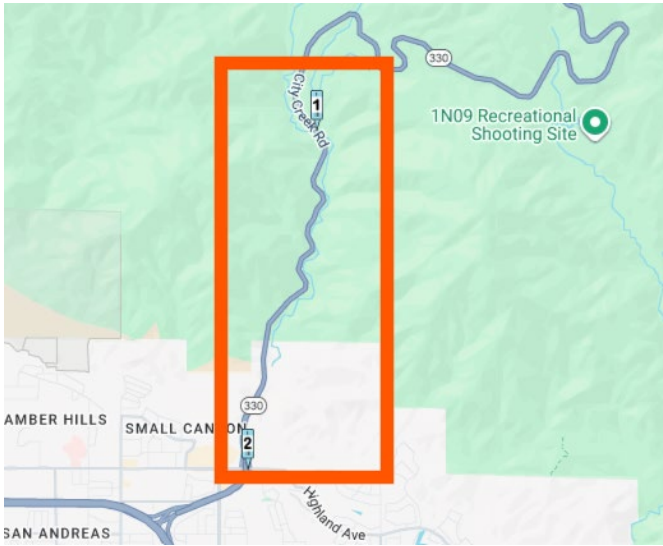
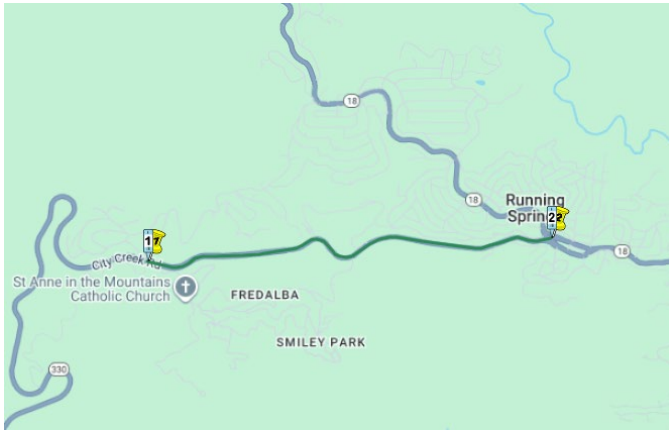
The purpose of these signs is to provide real-time traffic updates to help drivers make informed decisions about their travel routes. Project is expected to be completed by late Spring 2026.

- **Work Schedule:** Monday to Friday, **7:00 AM to 4:00 PM** (daytime work hours)
- **Lane Closure Dates:** November 5, 2025, through November 14, 2025
- **Lane Closure Locations:**

Crews will be performing work at various locations to remove k-rail. Lane closures will take place at the following locations with traffic control:

- **SR-18** – Lane closure on NB Rte. 18 between Stanfield Cutoff to Division Dr.
- **SR-38** – Lane closure between Baldwin Rd to State Ln./Mitchell Ln.
- **SR-38** – Lane closure between Rte. 18/Big Bear Blvd. to Rim of the World Dr.
- **SR-330** – Lane closure between Live Oak Dr. to Rte. 18/Hilltop Blvd.
- **SR-330** – Lane closure between Highland Avenue to City Creek.
- **SR-330** – Lane closure between East Fork City Creek to Highland Ave.





The construction schedule is subject to material and equipment availability and weather conditions.

Click [here](#) to sign up and receive project updates.

Visit build.ca.gov to learn more about transformative infrastructure projects happening in communities throughout the state.

To stay on top of roadwork in the Inland Empire visit Caltrans QuickMap to get real time traffic information.

For those with sensory disabilities requiring alternate formats (i.e. Braille, large print, sign language interpreter, etc.) and those needing information in a language other than English, please contact Public Affairs at 909-383-4631 or TTY 711.

###

| CleanCA.com | CleanWaterCA.com | [#BeWorkZoneAlert](https://www.instagram.com/BeWorkZoneAlert) | [X](https://www.x.com/BeWorkZoneAlert) | [Facebook](https://www.facebook.com/BeWorkZoneAlert) | [QuickMap](https://www.quickmap.ca.gov)

BE WORK ZONE ALERT

