

Commuter Alert



Date: August 26, 2022
Alert #: 22-725
District: 8 Riverside/San Bernardino
Project ID: 1C850
Contact: Carolina.Rojas@dot.ca.gov
Emily.Leinen@dot.ca.gov
Phone: (909) 383-6733 / (909) 289-2836
(909) 383-1910

For Immediate Release

State Route 74 Lane Widening Near Lake Elsinore Weeknight Full Closures August 29 through September 1

RIVERSIDE, CA – The California Department of Transportation (Caltrans) continues work on State Route 74 (SR-74) in Riverside County from the Riverside and Orange County border to Monte Vista Street just west of Lake Elsinore. Crews will perform rebar forming, pouring, excavation, and barrier work in various locations throughout the project zone.

DAYTIME CLOSURES: Contractors will perform **DAYTIME WORK from 9 a.m. to 3 p.m., REQUIRING ONE WAY LANE CLOSURES.** These closures will occur near Bear Canyon and run approx. a mile long. Signage indicating closure zones will be placed ahead of the work area. A flagging operation will assist in traffic control. **DRIVERS PLAN YOUR ROUTE!**

WEEKNIGHT FULL CLOSURES: One-way traffic control with flagging and pilot vehicles will be in place from 8 p.m. to 9:59 p.m. During the hours of 10 p.m. to 5 a.m., the route will be **CLOSED** to through traffic.

RESIDENTS AND COMMUTERS will need to utilize the alternate routes to go around the closure each night **BEGINNING AT 10 p.m.** Access through the work zone will be prohibited during the previously stated hours.

Work will take place nightly, east of the County line on SR-74, Monday through Thursday.

Residents on Tenaja Truck Trail or west of Tenaja Truck Trail, including the Ortega Oaks RV Park and Campground and The Candy Store, **will be directed to Lake Elsinore** and **WILL NOT** be given access to go through to Orange County during the hours of 10:00 p.m. to 5:00 a.m. **Residents** at Long Canyon and Decker Canyon **will be directed to Lake Elsinore** and **WILL NOT** be given access to go through to Orange County during the hours of 10:00 p.m. to 5:00 a.m.

Commuter Alert



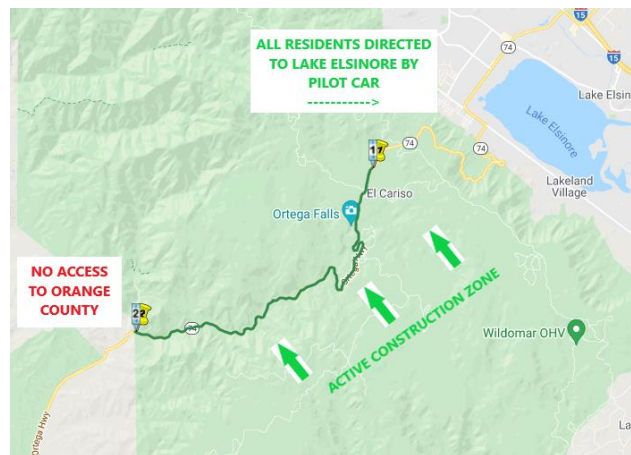
Be advised, you will experience long waits and delays due to construction operations. Please wait for the designated pilot car to escort you through the construction zone.

Please obey all posted signs and traffic instructions, including the pilot escort car, as CHP will be on location and citing any offenders.

Residents will be escorted in and out of the construction zones from their designated areas of access (Lake Elsinore).

This is an ACTIVE construction zone! The contractor may be changing locations nightly, which will affect the direction of travel for residents that live within the construction zone.

Reminder: One-way traffic control with flagging and pilot vehicles will be in place from 8 p.m. to 10 p.m. During the hours of 10:01 p.m. to 5 a.m., the route will be closed to **through** traffic, at the above-mentioned location, for various work operations. This night work will occur Monday through Thursday. **It is advised to use an alternate route to avoid these long delays such as SR-91 and I-15 and the I-5.**



For up-to-date information and to sign up for commuter alerts, please go to the website: [SR-74 Ortega Widening Project](#).

Use caution and expect delays during construction hours. Law enforcement will be on scene to assist with traffic control. Remember to reduce your speed in and surrounding the work zone. Be advised, weather may affect construction schedule.

Know before you go! To stay on top of roadwork in the Inland Empire go to [Caltrans District 8](#) and sign up for commuter alerts. Follow us for the latest information on [Facebook](#) and [Twitter](#). To assist in planning your commute, view live traffic conditions using [QuickMap](#) and [planned lane closures](#).

For those with sensory disabilities requiring alternate formats (i.e. Braille, large print, sign language interpreter, etc.) and those needing information in a language other than English, please contact Caltrans Public Affairs at 909-383-4631 or TTY 711.

###