

# Commuter Alert

**Date:** January 14, 2026

**District:** [08-1J270](#)

**Contact:** [Robert.tsai@dot.ca.gov](mailto:Robert.tsai@dot.ca.gov)

**Phone:** 909-925-7517

**For Immediate Release**

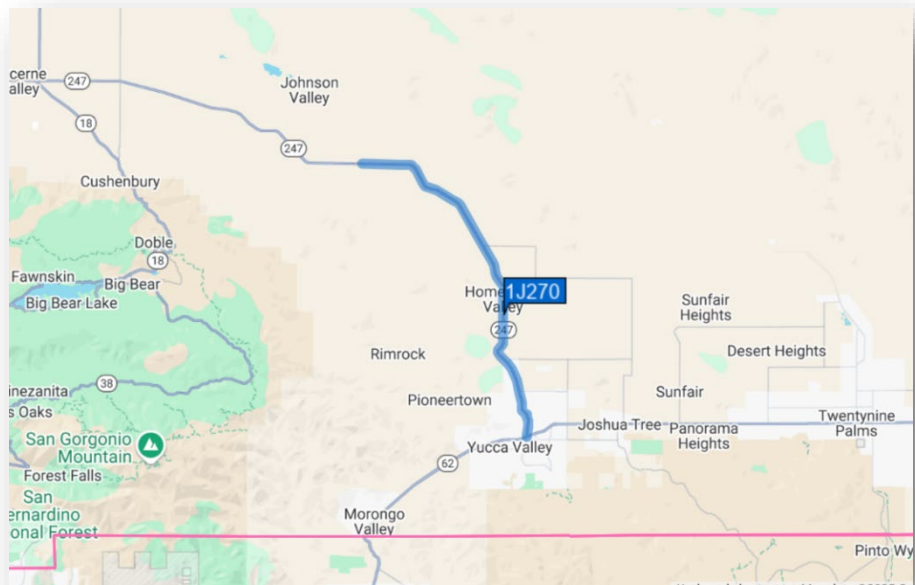
## Route 247 Roadway Improvement Work Coming to Yucca Valley Week of January 19, 2026

**SAN BERNARDINO** – The California Department of Transportation (Caltrans) continues work on a \$21.9 M pavement rehabilitation and shoulder widening project on State Route 247 (SR-247). This work is funded through Senate Bill (SB) 1, the Road Repair and Accountability Act of 2017.

The project will improve road conditions with a pavement mill and overlay, outside shoulders widened to 8-foot, drainage improvements at three pre-determined locations, and striping and placing shoulder signage for Class II bike lanes as part of Complete Streets elements ensuring safe accessibility for all roadway users.

Construction signs have been placed, as well as clearing in shoulder areas and placement of high visibility fencing for environmentally

protected areas. Work operations will occur near Yucca Valley from the State Route 62 Junction to Gin Road. Project work is expected to be complete by fall 2025.



##More Below##



Figure 1 June 2025 Concrete Pour



Figure 2 SR-247 Before Road Improvement Near Larrea Rd Photo

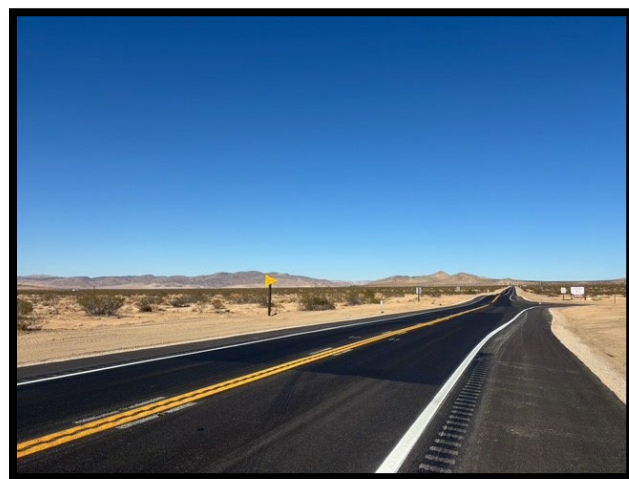


Figure 3 SR-247 After Road Improvement Near Larrea Rd Photo

**Crews will continue culvert work activities which include installing culvert walls on SR-247 between SR-62 junction and Aviation Dr. from 7 a.m. to 4 p.m. Monday (01/19) through Friday (01/23). Northbound and southbound SR-247 shoulder closures will occur during the culvert operations from Wednesday (01/21) through Friday (01/23). There will be no shoulder closure during culvert operations from Monday (01/19) through Tuesday (01/20). The scope of the work will include pouring concrete to form new culvert collar and upgrading culvert headwalls. Friday and Saturday night work may occasionally be required from 7:00 p.m. to 6:00 a.m. Closures are dependent on contractor receiving proper materials for each job function. They can be changed or canceled at any time. Weather permitting.**

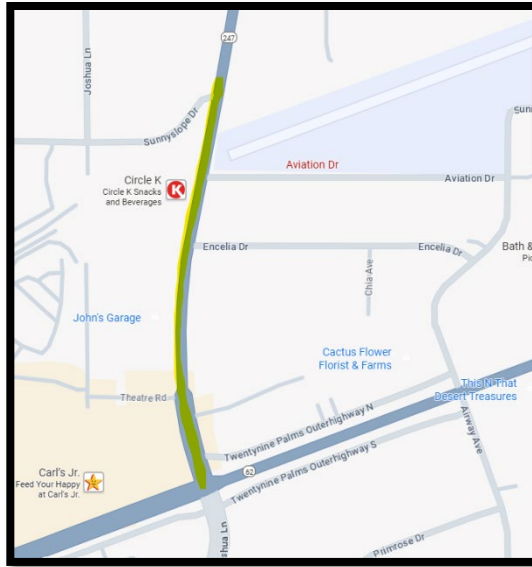


Figure 2 SR-62 Junction and Aviation Dr. Map Location

**What to Expect:** Please be mindful of work area signage as law enforcement will enforce applicable laws and regulations. Daytime and nighttime shoulder works, please proceed cautiously as work vehicles and crews may move in and out of shoulder areas.

**Major Accomplishment:** Project team heard local community's safety concern on lane striping near Larrea Rd at SR-247. Crews went ahead and installed the double solid yellow lines on both SR-247 northbound and southbound lanes approaching Larrea Rd to prevent any driving confusion and collision.

*Construction schedule subject to material availability and weather conditions.*

Click [here](#) to sign up and receive project schedule updates.

For more information about transportation and other infrastructure projects funded with state and federal investments, visit [build.gov.ca](http://build.gov.ca).

Know before you go! To stay on top of roadwork in the Inland Empire go to [Caltrans District 8](#) and sign up for commuter alerts.

For those with sensory disabilities requiring alternate formats (i.e. Braille, large print, sign language interpreter, etc.) and those needing information in a language other than English, please contact Public Affairs at 909-383-4631 or TTY 711.

###

| [CleanCA.com](http://CleanCA.com) | [CleanWaterCA.com](http://CleanWaterCA.com) | [#BeWorkZoneAlert](https://twitter.com/BeWorkZoneAlert) | [X](#) | [Facebook](#) | [YouTube](#) | [QuickMap](#)