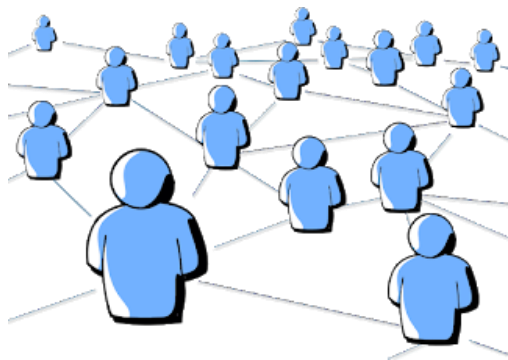


Use of Coin Operated Games



All coin operated games will be used in conformity with the epidemic order requirements as non-contact sports.

Players are required to wear masks AT ALL TIMES, unless eating or drinking.



Equipment will be properly distanced from other equipment and all diners.

Players will maintain a minimum of 6 feet between one another and general patrons.

Equipment is sanitized frequently.

Hand sanitizing stations and disinfectant is available to all players.



Restrictions put in place by the location owner or local health department will be followed.