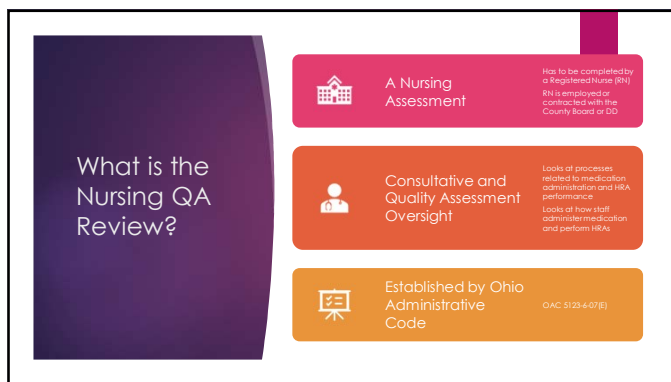
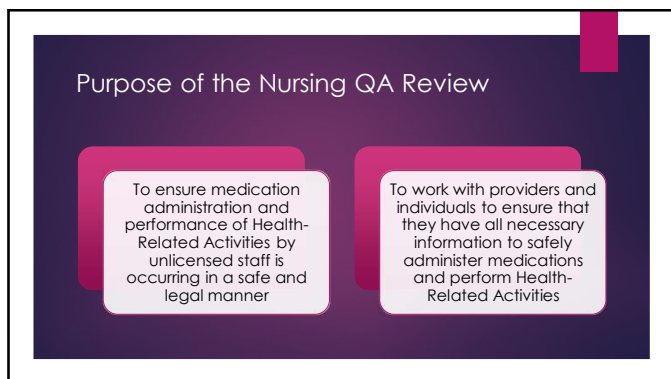


1



2



3

Where are Nursing QAs Performed?



At each provider location where an individual is receiving services from:

- Certified Supporting Living Providers
- Does not include ICFs
 - Residential Support Services from Home and Community-Based Services Providers
 - Community Living 4 beds or fewer
 - Residential Settings 5 beds or fewer
 - Adult Day Services
 - In settings with 16 or fewer individuals



This includes both Agency and Independent Providers

4

For Whom?

- ▶ Individual receiving
 - ▶ Medication Administration (including oxygen administration)
 - ▶ Health-Related Activities (13 specific HRAs in the curriculum)
 - ▶ G-or-J Tube Hydration, Nutrition, and/or Medications
 - ▶ Insulin Administration
 - ▶ Other delegated nursing tasks
 - ▶ Anything that is not one of the 13 health-related activities

5

By Whom?

- ▶ A Quality Assurance Registered Nurse (QA RN)
 - ▶ Authorized by DoDD
 - ▶ Contracted with, or employed by, a County Board of DD
- ▶ A resource and consult for providers
 - ▶ QA RN is there to help (even after the QA is over)
 - ▶ QA Review is not a punitive process
 - ▶ Identify areas that are not appropriate
 - ▶ Provide information on how to correct them

6

How Often?

- ▶ Mandated every 3 years
- ▶ Can be done more frequently if needed
 - ▶ Request by SA or other Staff
 - ▶ Concerns by any team member
 - ▶ MULs may lead to a request
 - ▶ Nursing referrals may lead to a request

7

What's the Process?

Cuyahoga DD keeps an internal database of reports and due dates

QA RN will reach out to contact person to schedule 1-2 months in advance

Please respond if you are contacted


Establish a time/date to complete review

QA RN will need to observe all medication administration and HRA performance

- What time does it happen?
- How do we NOT mess up our stuff?
- How often is it done once a week, that should be the day scheduled for the Review

8


Process Continued...



Letter of Confirmation

Includes the date, time, and location
Will request documentation for review 2 weeks PRIOR to the visit

- 3 past months of Medication Administration Records (MARs)
- 12 months of medication error reports
- 3 months of after-visit summaries
- ***ELECTRONIC COPIES ARE FINE***

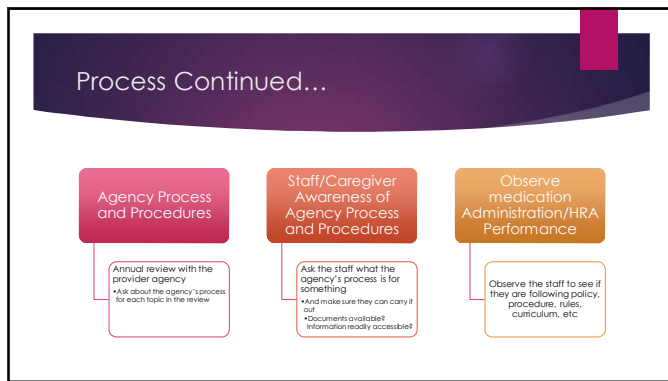


Reminder Day Before

Reminder, Safety Procedures

- Where to park, beverages, anything special need to know?

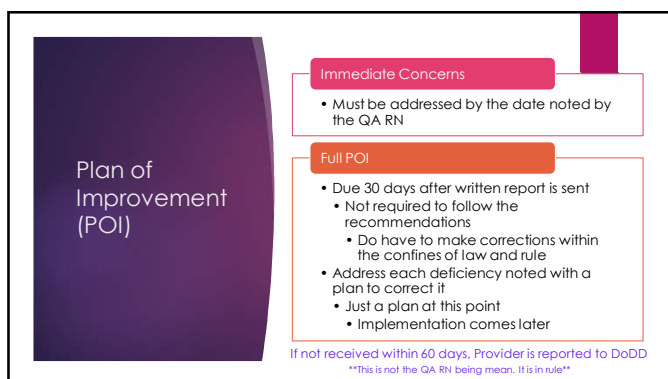
9



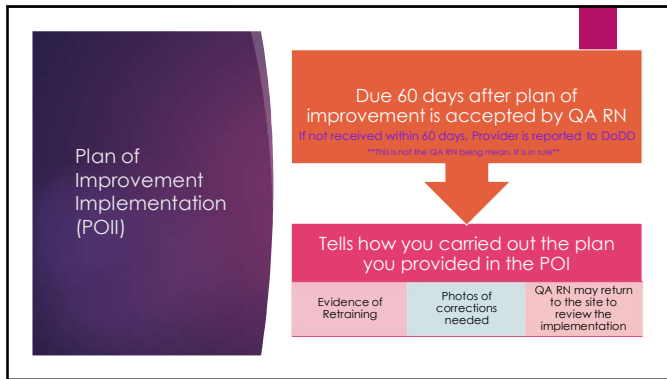
10



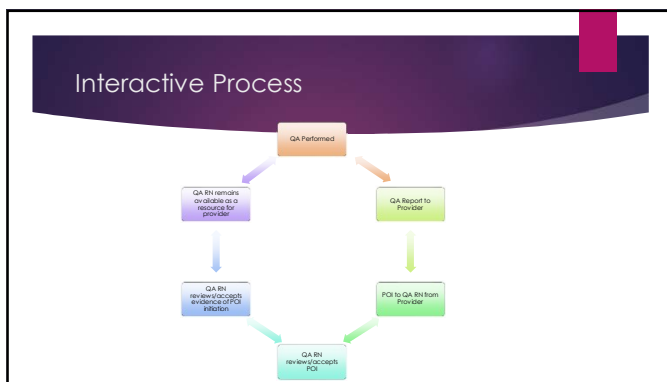
11



12



13



14



15
