

FOR SALE

VACANT LAND 4.1 ACRES Industrial Site

Ready to build in McHenry County's premier Inland Industrial Park. City water and sewer to site. Level lot with off-site retention. Only a few lots available. Price reduced!! \$1.95 psf. Easy access to Route 31. Visit Premier Commercial Realty website to see more listings.

PROPERTY SPECIFICATIONS

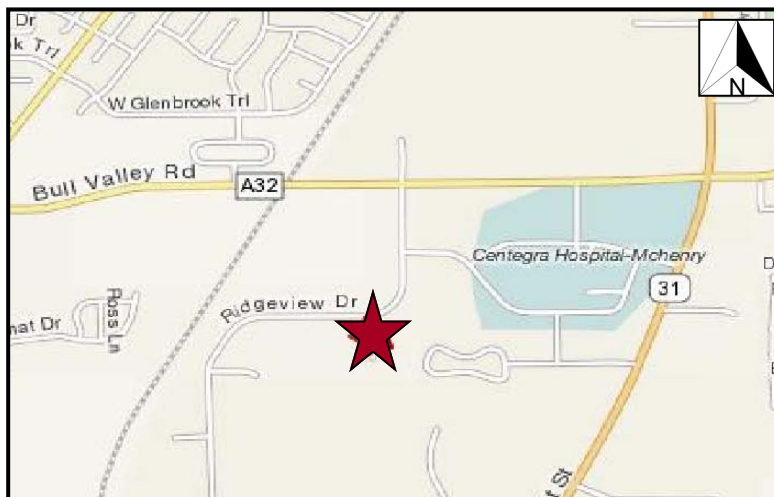
Description:	Industrial Building Site
Land Size:	4.1 Acres 178,596 SF
Possession:	Immediate
Topography:	Flat
Environmental Status:	TBD
Utilities:	To Site
Sewer: City	Water: City
Frontage Dimensions:	522'
Zoning:	Industrial
Real Estate Taxes:	\$11,818.40 (2017)
Association Dues:	\$1,597.75 (2017)
Sale Price:	\$495,000 \$348,000 (\$1.95 psf)

No warranty or representation is made as to the accuracy of the foregoing information. Terms of sale or lease and availability are subject to change or withdrawal without notice. This document is for information purposes only. No offer of sub-agency is being made.



PRICE REDUCED!

MLS: 09103773



Directions: Route 31, West on Bull Valley Road, South on Ridgeview Road to property on left.

PIN: 14-03-460-001
14-03-460-002
14-03-460-003
14-03-460-004
14-03-460-005

May 21, 2018

CLICK HERE
TO VISIT OUR WEBSITE

www.PremierCommercialRealty.com

- Industrial
- Commercial
- Office
- Land
- Business

Lots 48-53 Ridgeview Dr.
McHenry, IL 60050

4.1 Acres Inland Industrial Park

