

- Industrial
- Commercial
- Office
- Land
- Business

740 Eastgate Road
Crystal Lake, IL 60014

FOR SALE

Potential Multi-Tenant Industrial Building 9,445 SF

Steel building with multi-tenant potential. Current 5 contiguous units are divisible to 1,880± SF (each w/own meters). See layout.

UNIT 1: 1,880± SF office w/ 2 baths (each w/shower), 5 private offices, kitchenette, no DID.

UNIT 2: 1,880 SF warehouse w/ 2 DIDs

UNIT 3: 1,880 SF warehouse w/ 2 DIDs

UNIT 4: 1,880 SF warehouse w/ access to 320± SF Mezzanine, 2 DIDs.

UNIT 5: 900 ± SF Office, 1 bath, warehouse

Units 2-5 have triple trap trench drains. Additional plumbing stubbed in for additional bathrooms in units 2,3 and 4. Ideal for automotive and manufacturing uses.



PRICE REDUCED

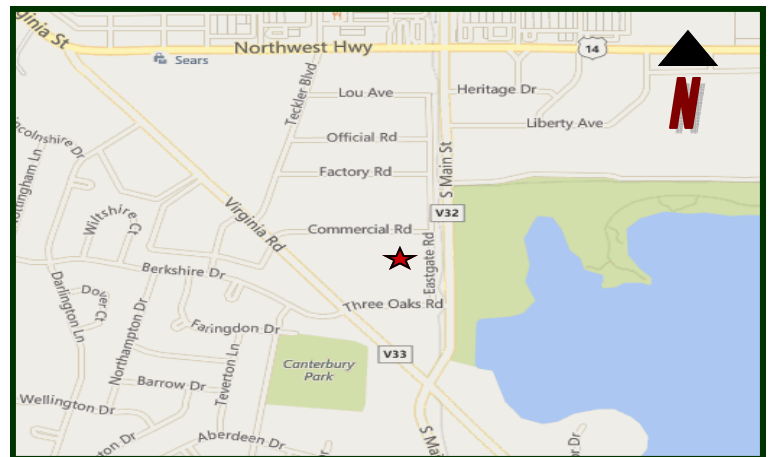


REAR

PROPERTY SPECIFICATIONS	
Description:	Industrial Building
Year Built:	2002
Building Size:	9,445± SF
Land Size:	40,000 (200'x200')
Office/Showroom:	2,748± SF
HVAC System:	Central A/C & GFA (office) Ceiling hung heat (warehouse)
Power:	200 amp, 120/240 V, 3 phase (per unit)
Sprinklered:	No
Floor Drains:	Yes
Ceiling Height:	13'6" - 16'
Parking:	20±
Washroom(s):	3
Drive-in-Doors:	7 (12x12) - 4 in back, 3 in front Drive-thru capability
Sewer/water:	City
Possession:	Negotiable
Zoning:	M
Environmental:	TBD
Real Estate Taxes:	\$23,166.10 (2015)
Sale Price:	\$499,900 \$479,000 (\$50.71 psf)

LoopNet: 19437531

MLS: 09045239

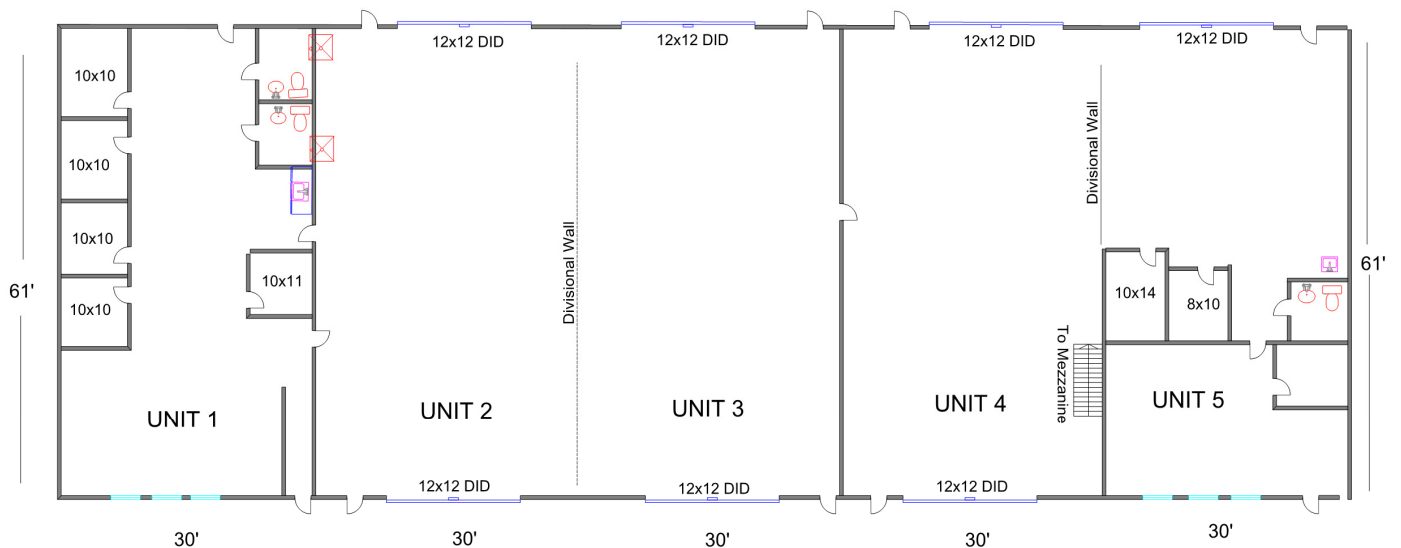
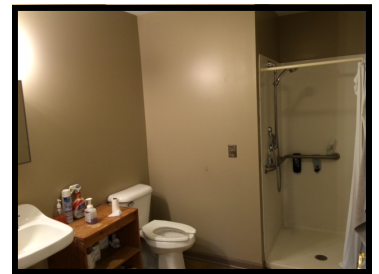


DIRECTIONS: Route 14 to south on Main Street to west on Berkshire to north on Eastgate Road. (corner of Eastgate and Commercial).

PIN: 19-08-277-015

October 5, 2016

No warranty or representation is made as to the accuracy of the foregoing information. Terms of sale or lease and availability are subject to change or withdrawal without notice. This document is for information purposes only. No offer of sub-agency is being made.



All Measurements are Approximate