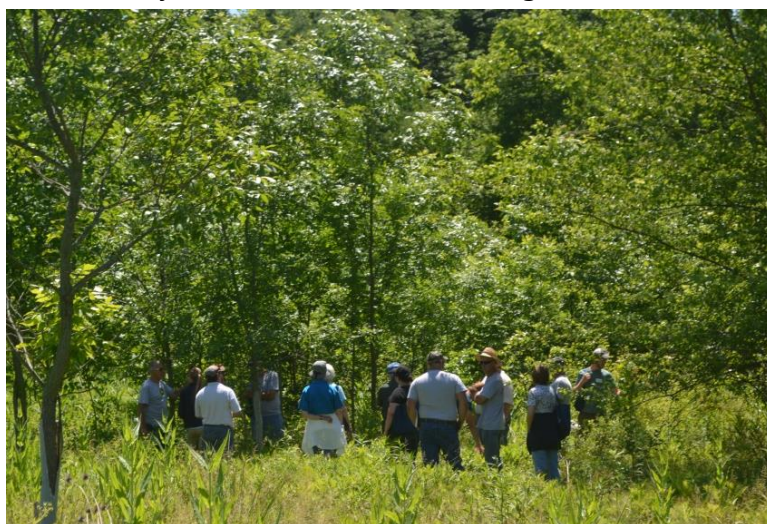


The Berks County Conservation District (BCCD) received a grant through the Conservation Reserve Enhancement Program (CREP) Outreach Program Office to hold a field day event and to promote the CREP program in Berks County.



To promote the CREP program, BCCD partnered with Stroud Water Research Center, Chester County, to design and install three billboards in Berks County for two months. The billboards were placed along major highways in the County in order to connect landowners and farmers with programs that are available in Berks County. Through this effort we reached ten landowners and two farmers, who we educated on the CREP programs, eligibility requirements, and other opportunities.

Additionally, a field day was held on June 18th on a farm in Wernersville, PA, in partnership with the Farm Service Agency (FSA) of Berks County, Natural Resource Conservation Service (NRCS) of Berks County, Berks County Penn State Extension, Department of Conservation and Natural Resources (DCNR), and Stroud Water Research Center. The workshop showcased commonly found invasive weeds and how to manage these weeds. There were 16 people in attendance. The attendees learned how to identify Tree of Heaven, Multiflora Rose, Bittersweet, Canada thistle, Honeysuckle, Garlic mustard and Stilt Grass and they were informed about management control methods for each of these weeds. Mena Hautau from Penn State Extension showed attendees how to use the "Weeds of the Northeast" book for weed identification. Each participant received a copy of the "Weeds of the Northeast" book to take with them and use to identify what is growing in their CP-22 fields. Heather Kerr from DCNR provided a demonstration on the Hack and Squirt method and Basal Bark spray to show the attendees acceptable spray methods to handle common invasive weeds.



Through this grant, BCCD was able to partner with numerous organizations to promote the CREP program in Berks County and to provide education on CREP maintenance. Proper CREP maintenance and invasive weed control is key in having the CP-22 fields and other CREP programs be successful. An effective program is needed in order to continue promoting the program to new landowners or farm operations as a conservation practice to protect and improve water quality in Berks County.