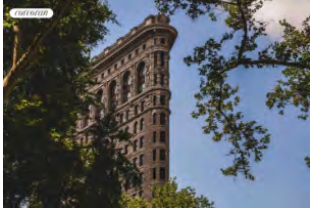


# 29 Listings In Contract - Manhattan Search Report

All Manhattan / All Property Types / \$4.0M - -

<b>\$3,043</b> Avg. PPSF	<b>\$2,783</b> Median PPSF	<b>\$10.53M</b> Avg. Price	<b>\$6.50M</b> Median Price	<b>\$10,638</b> Avg. Monthlies	<b>3,054</b> Median Size	<b>149</b> Days on Mkt
-----------------------------	-------------------------------	-------------------------------	--------------------------------	-----------------------------------	-----------------------------	---------------------------



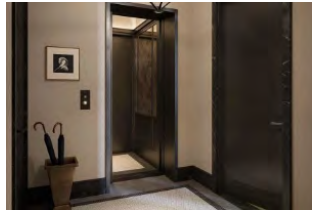
## 175 FIFTH AVE - Unit 21

Flatiron / CONDO

**\$58,500,000**

5 beds - 5.5 baths - 12 rooms - 7408 ft<sup>2</sup> • **\$7,896 / ft<sup>2</sup>**

Signed on Apr 01, 2026 - - Days to enter contract



## 175 FIFTH AVE - Unit 7

Flatiron / CONDO

**\$30,500,000**

7 beds - 7.5 baths - 16 rooms - 7691 ft<sup>2</sup> • **\$3,965 / ft<sup>2</sup>**

Signed on Mar 29, 2026 - - Days to enter contract



## 500 W 18 ST - Unit WEST\_PH3...

Chelsea / CONDO

**\$24,600,000**

4 beds - 4.5 baths - 6 rooms - 5160 ft<sup>2</sup> • **\$4,767 / ft<sup>2</sup>**

Signed on Mar 31, 2026 - 519 Days to enter contract



## 140 JANE ST - Unit 2S

West Village / CONDO

**\$14,950,000**

3 beds - 3.5 baths - 6 rooms - 3292 ft<sup>2</sup> • **\$4,541 / ft<sup>2</sup>**

Signed on Mar 30, 2026 - 136 Days to enter contract



## 354 W 20 ST - Unit HOUSE

Chelsea / TOWNHOUSE

**\$13,999,999**

5 beds - 4 baths - 15 rooms - 6200 ft<sup>2</sup> • **\$2,258 / ft<sup>2</sup>**

Signed on Apr 04, 2026 - 258 Days to enter contract



## 173 MACDOUGAL ST - Unit 5W

Greenwich Village / CONDO

**\$12,900,000**

4 beds - 4.5 baths - 7 rooms - 4635 ft<sup>2</sup> • **\$2,783 / ft<sup>2</sup>**

Signed on Mar 30, 2026 - 28 Days to enter contract



## 39 W 23 ST - Unit PH

Flatiron / CONDO

**\$12,500,000**

3 beds - 3.5 baths - 8 rooms - 3228 ft<sup>2</sup> • **\$3,872 / ft<sup>2</sup>**

Signed on Apr 03, 2026 - 67 Days to enter contract

# 29 Listings In Contract - Manhattan Search Report

All Manhattan / All Property Types / \$4.0M - -

<b>\$3,043</b> Avg. PPSF	<b>\$2,783</b> Median PPSF	<b>\$10.53M</b> Avg. Price	<b>\$6.50M</b> Median Price	<b>\$10,638</b> Avg. Monthlies	<b>3,054</b> Median Size	<b>149</b> Days on Mkt
-----------------------------	-------------------------------	-------------------------------	--------------------------------	-----------------------------------	-----------------------------	---------------------------



## 175 FIFTH AVE - Unit 6S

Flatiron / CONDO

**\$10,950,000**

3 beds - 3 baths - 7 rooms - 3054 ft<sup>2</sup> - **\$3,585 / ft<sup>2</sup>**

Signed on Mar 29, 2026 - 38 Days to enter contract



## 32 WALKER ST - Unit 3

TriBeCa / CONDO

**\$10,250,000**

3 beds - 4.5 baths - 5 rooms - - ft<sup>2</sup>

Signed on Apr 03, 2026 - 1 Day to enter contract



## 21 E 87 ST - Unit 2AB

Carnegie Hill / COOP

**\$8,500,000**

5 beds - 6.5 baths - 11 rooms - 4600 ft<sup>2</sup> - **\$1,847 / ft<sup>2</sup>**

Signed on Apr 03, 2026 - 44 Days to enter contract



## 211 CENTRAL PARK W - Unit 4G

Upper West Side / COOP

**\$8,500,000**

4 beds - 4 baths - 9 rooms - - ft<sup>2</sup>

Signed on Apr 02, 2026 - 852 Days to enter contract



## 27 WOOSTER ST - Unit 4A

SoHo / CONDO

**\$7,200,000**

3 beds - 3.5 baths - 6 rooms - 2500 ft<sup>2</sup> - **\$2,880 / ft<sup>2</sup>**

Signed on Apr 01, 2026 - 380 Days to enter contract



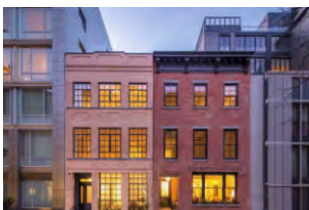
## 15 CENTRAL PARK W - Unit 11L

Lincoln Square / CONDO

**\$6,995,000**

2 beds - 2.5 baths - 5 rooms - 1925 ft<sup>2</sup> - **\$3,633 / ft<sup>2</sup>**

Signed on Apr 02, 2026 - 14 Days to enter contract



## 325 W BROADWAY - Unit PHE

SoHo / CONDO

**\$6,975,000**

1 bed - 2.5 baths - 4 rooms - 2083 ft<sup>2</sup> - **\$3,348 / ft<sup>2</sup>**

Signed on Mar 31, 2026 - 78 Days to enter contract

# 29 Listings In Contract - Manhattan Search Report

All Manhattan / All Property Types / \$4.0M - -

<b>\$3,043</b> Avg. PPSF	<b>\$2,783</b> Median PPSF	<b>\$10.53M</b> Avg. Price	<b>\$6.50M</b> Median Price	<b>\$10,638</b> Avg. Monthlies	<b>3,054</b> Median Size	<b>149</b> Days on Mkt
-----------------------------	-------------------------------	-------------------------------	--------------------------------	-----------------------------------	-----------------------------	---------------------------



## 53 W 53 ST - Unit 34C

Midtown Center / CONDO

**\$6,500,000**

3 beds - 3.5 baths - 5 rooms - 2506 ft<sup>2</sup> • **\$2,593 / ft<sup>2</sup>**

Signed on Apr 01, 2026 - 232 Days to enter contract



## 344 W 72 ST - Unit MAISA

Lincoln Square / COOP

**\$6,350,000**

4 beds - 4.5 baths - 7 rooms - 3770 ft<sup>2</sup> • **\$1,684 / ft<sup>2</sup>**

Signed on Mar 31, 2026 - 172 Days to enter contract



## 900 FIFTH AVE - Unit 6A

Lenox Hill / COOP

**\$5,600,000**

3 beds - 3 baths - 6 rooms - - ft<sup>2</sup>

Signed on Apr 01, 2026 - 48 Days to enter contract



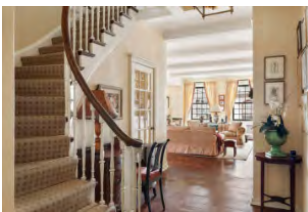
## 250 W 96 ST - Unit 19C

Upper West Side / CONDO

**\$5,525,000**

3 beds - 3.5 baths - 6 rooms - 2411 ft<sup>2</sup> • **\$2,291 / ft<sup>2</sup>**

Signed on Mar 30, 2026 - 3 Days to enter contract



## 129 E 69 ST - Unit 8/9A

Lenox Hill / COOP

**\$5,495,000**

4 beds - 3.5 baths - 9 rooms - 3100 ft<sup>2</sup> • **\$1,772 / ft<sup>2</sup>**

Signed on Mar 31, 2026 - 161 Days to enter contract



## 755 PARK AVE - Unit PHA

Lenox Hill / COOP

**\$5,495,000**

2 beds - 3.5 baths - 8 rooms - - ft<sup>2</sup>

Signed on Mar 30, 2026 - 482 Days to enter contract



## 456 W 25 ST - Unit HOUSE

Chelsea / TOWNHOUSE

**\$5,399,000**

4 beds - 3.5 baths - 10 rooms - 3520 ft<sup>2</sup> • **\$1,533 / ft<sup>2</sup>**

Signed on Apr 01, 2026 - 252 Days to enter contract

# 29 Listings In Contract - Manhattan Search Report

All Manhattan / All Property Types / \$4.0M - -

<b>\$3,043</b> Avg. PPSF	<b>\$2,783</b> Median PPSF	<b>\$10.53M</b> Avg. Price	<b>\$6.50M</b> Median Price	<b>\$10,638</b> Avg. Monthlies	<b>3,054</b> Median Size	<b>149</b> Days on Mkt
-----------------------------	-------------------------------	-------------------------------	--------------------------------	-----------------------------------	-----------------------------	---------------------------



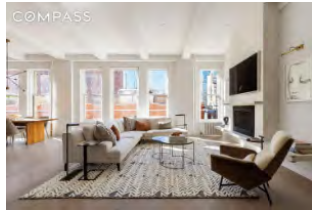
## 785 FIFTH AVE - Unit 14A

**\$5,350,000**

Lenox Hill / COOP

2 beds - 4.5 baths - 6 rooms - - ft<sup>2</sup>

Signed on Mar 31, 2026 - 187 Days to enter contract



## 100 HUDSON ST - Unit 7BC

**\$5,250,000**

TriBeCa / COOP

3 beds - 2.5 baths - 8 rooms - - ft<sup>2</sup>

Signed on Mar 30, 2026 - - Days to enter contract



## 1965 BROADWAY - Unit 24EF

**\$4,995,000**

Lincoln Square / CONDO

3 beds - 3.5 baths - 6 rooms - 2378 ft<sup>2</sup> • **\$2,100 / ft<sup>2</sup>**

Signed on Mar 30, 2026 - 46 Days to enter contract



## 21 E 12 ST - Unit 5B

**\$4,750,000**

Greenwich Village / CONDO

2 beds - 2.5 baths - 6 rooms - 1629 ft<sup>2</sup> • **\$2,915 / ft<sup>2</sup>**

Signed on Apr 02, 2026 - 19 Days to enter contract



## 101 WARREN ST - Unit 1720

**\$4,650,000**

TriBeCa / CONDO

3 beds - 3.5 baths - 7 rooms - 2366 ft<sup>2</sup> • **\$1,965 / ft<sup>2</sup>**

Signed on Apr 01, 2026 - 379 Days to enter contract



## 219 HUDSON ST - Unit PHB

**\$4,500,000**

Hudson Square / CONDO

4 beds - 3.5 baths - 6 rooms - 2013 ft<sup>2</sup> • **\$2,235 / ft<sup>2</sup>**

Signed on Mar 30, 2026 - 165 Days to enter contract



## 555 W 22 ST - Unit 10BE

**\$4,150,000**

Chelsea / CONDO

2 beds - 2.5 baths - 4 rooms - 1699 ft<sup>2</sup> • **\$2,442 / ft<sup>2</sup>**

Signed on Mar 31, 2026 - 210 Days to enter contract

## 29 Listings In Contract - Manhattan Search Report

All Manhattan / All Property Types / \$4.0M - -

**\$3,043**

Avg. PPSF

**\$2,783**

Median PPSF

**\$10.53M**

Avg. Price

**\$6.50M**

Median Price

**\$10,638**

Avg. Monthlies

**3,054**

Median Size

**149**

Days on Mkt



**25 FIFTH AVE - Unit 12A**

**Greenwich Village / CONDO**

**\$4,100,000**

3 beds - 2 baths - 6 rooms - 1333 ft<sup>2</sup> - **\$3,075 / ft<sup>2</sup>**

Signed on Mar 31, 2026 - 55 Days to enter contract