

15 Listings In Contract - Manhattan Search Report

All Manhattan / All Property Types / \$4.0M - -

\$2,791 Avg. PPSF	\$2,366 Median PPSF	\$9.29M Avg. Price	\$6.00M Median Price	\$9,251 Avg. Monthlies	2,676 Median Size	84 Days on Mkt
-----------------------------	-------------------------------	------------------------------	--------------------------------	----------------------------------	-----------------------------	--------------------------



500 W 18 ST - Unit WEST_28AD
Chelsea / CONDO
\$22,120,000 6 beds - 6.5 baths - 10 rooms - 5355 ft² • \$4,130 / ft²

Signed on Oct 13, 2023 - - Days to enter contract



137 DUANE ST - Unit PH
TriBeCa / CONDO
\$18,000,000 5 beds - 5 baths - 8 rooms - 4548 ft² • \$3,957 / ft²

Signed on Oct 11, 2023 - 183 Days to enter contract



1 CENTRAL PARK W - Unit 43A
Lincoln Square / CONDO
\$17,950,000 3 beds - 5.5 baths - 8 rooms - 3663 ft² • \$4,900 / ft²

Signed on Oct 10, 2023 - 34 Days to enter contract



1120 FIFTH AVE - Unit 8A
Carnegie Hill / COOP
\$13,700,000 4 beds - 4.5 baths - 10 rooms - - ft²

Signed on Oct 10, 2023 - 34 Days to enter contract



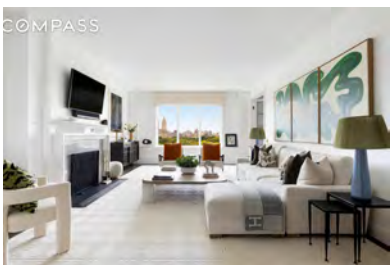
737 PARK AVE - Unit 11E
Lenox Hill / CONDO
\$13,450,000 5 beds - 7.5 baths - 12 rooms - 4719 ft² • \$2,850 / ft²

Signed on Oct 13, 2023 - 36 Days to enter contract



1035 FIFTH AVE - Unit 6C
Upper East Side / COOP
\$7,250,000 5 beds - 6 baths - 10 rooms - 4000 ft² • \$1,812 / ft²

Signed on Oct 11, 2023 - 84 Days to enter contract



955 FIFTH AVE - Unit 14A
Upper East Side / COOP
\$6,250,000 2 beds - 2.5 baths - 6 rooms - - ft²

Signed on Oct 13, 2023 - 37 Days to enter contract

15 Listings In Contract - Manhattan Search Report

All Manhattan / All Property Types / \$4.0M - -

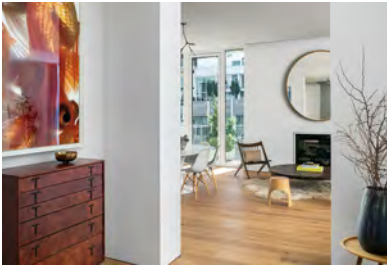
\$2,791 Avg. PPSF	\$2,366 Median PPSF	\$9.29M Avg. Price	\$6.00M Median Price	\$9,251 Avg. Monthlies	2,676 Median Size	84 Days on Mkt
-----------------------------	-------------------------------	------------------------------	--------------------------------	----------------------------------	-----------------------------	--------------------------



90 RIVERSIDE DR - Unit 10BUpper West Side / COOP

\$5,995,0003 beds - 3.5 baths - 7 rooms - 2600 ft² • **\$2,305 / ft²**

Signed on Oct 13, 2023 - 231 Days to enter contract



532 W 20 ST - Unit 9Chelsea / CONDO

\$5,895,0003 beds - 3.5 baths - 6 rooms - 2694 ft² • **\$2,188 / ft²**

Signed on Oct 12, 2023 - 583 Days to enter contract



1289 LEXINGTON AVE - Unit 1...Carnegie Hill / CONDO

\$5,700,0003 beds - 3.5 baths - 5 rooms - 2447 ft² • **\$2,329 / ft²**

Signed on Oct 09, 2023 - 1006 Days to enter contract



71 LAIGHT ST - Unit 4ETriBeCa / CONDO

\$5,495,0003 beds - 3.5 baths - 5 rooms - 2287 ft² • **\$2,402 / ft²**

Signed on Oct 09, 2023 - 182 Days to enter contract



16 E 11 ST - Unit 4B/CGreenwich Village / COOP

\$4,850,0003 beds - 2 baths - 6 rooms - - ft²

Signed on Oct 10, 2023 - 33 Days to enter contract



1 WATERLINE SQ - Unit 29ELincoln Square / CONDO

\$4,495,0002 beds - 2.5 baths - 4 rooms - 1615 ft² • **\$2,783 / ft²**

Signed on Oct 11, 2023 - 57 Days to enter contract



525 PARK AVE - Unit 2SLenox Hill / CONDO

\$4,250,0003 beds - 3 baths - 8 rooms - 2657 ft² • **\$1,599 / ft²**

Signed on Oct 10, 2023 - 223 Days to enter contract

15 Listings In Contract - Manhattan Search Report

All Manhattan / All Property Types / \$4.0M - -

<div>\$2,791</div> <div>Avg. PPSF</div>	<div>\$2,366</div> <div>Median PPSF</div>	<div>\$9.29M</div> <div>Avg. Price</div>	<div>\$6.00M</div> <div>Median Price</div>	<div>\$9,251</div> <div>Avg. Monthlies</div>	<div>2,676</div> <div>Median Size</div>	<div>84</div> <div>Days on Mkt</div>
---	---	--	--	--	---	--------------------------------------



215 E 19 ST - Unit 8B

Gramercy Park / CONDO

\$4,025,000

2 beds - 3 baths - 5 rooms - 1800 ft² • \$2,236 / ft²

Signed on Oct 13, 2023 - - Days to enter contract