

YOUR SCHEDULE SHAPES *Your Associate Degree* TIMELINE

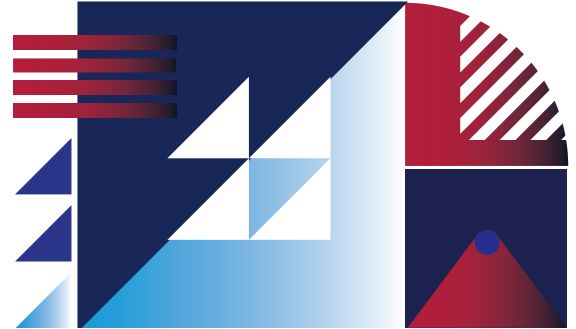


1 COURSE = **3*** CREDITS
MATH, PHYS, & SCIENCE VARY

AN ASSOCIATE DEGREE IS **60 CREDIT HOURS**.

Take **15 HOURS** a semester across fall, spring, and summer, you're **DONE IN 2 YEARS**.

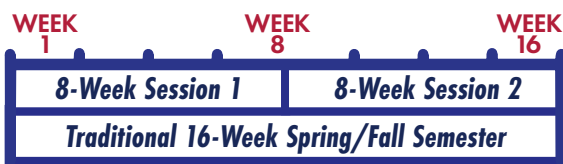
TAKE FEWER HOURS EACH SEMESTER, & THE TIMELINE STRETCHES.



How can 8-WEEK HELP?

- ✓ **KNOCK OUT CORE CLASSES FASTER**
Focus on just two courses at a time, no more juggling 5 classes at once.
- ✓ **GRADUATE EARLY**
Back-to-back 8-week sessions can help students finish in as little as 2 years.
- ✓ **DON'T DELAY YOUR FUNDING!**
Financial Aid works best when you register early. Lock in classes and keep financial aid on track.
- ✓ **SMALL CLASS SIZES**
20:1 student-to-instructor ratio means more personal attention and support in the classroom.
- ✓ **NO YEAR-LONG WAITS**
In 8-week, you get **two chances** per semester, avoiding long delays between courses.

STUDENT TYPE	Each Fall and Spring Semester	Each Summer or Mini-Mester	Total Years
FULL-TIME STUDENT	12 CREDITS	6 CREDITS	2 YEARS
PART-TIME STUDENT	9 CREDITS	6 CREDITS	2.5 YEARS
	6 CREDITS	6 CREDITS	3.5 YEARS
	6 CREDITS	0 CREDITS	5 YEARS
	3 CREDITS	0 CREDITS	10 YEARS



EIGHT WEEK CLASSES.
More progress, less pressure.



Meet with your advisor to plan your full-year schedule!

HN-Advising@LoneStar.edu • LoneStar.edu/HNAdvising