

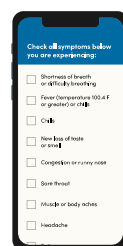


# Return to In-Person Learning

## Top 10 Things SPS Families Need to Know

1

There will be a required, daily health screening. The screening must be submitted prior to 7 a.m. Families will receive an "approved" or "not approved" notice.



2

Students will be required to wear a mask. Masks should fit above the nose and below the chin. Masks will be worn on the bus and in schools except for when students are eating or drinking. If a student doesn't have a mask, one will be provided. Plexiglass barriers have been installed in specialized classrooms for students who aren't able to wear a mask.



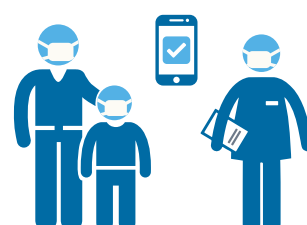
3

One student will be assigned to each bus seat, unless from the same household. Windows will be open or adjusted to provide air flow. Bus drivers will wear L&I approved Personal Protective Equipment, such as a mask, and sanitize high touch areas between each route. The entire bus will be sanitized daily after the last run.



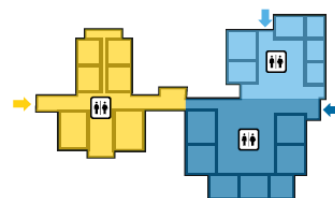
4

All students will be met by staff at a designated drop off area. The daily, required health screening will be confirmed. If a health screening is not complete, the family will attest at the school site or be contacted and the student will remain in a separate waiting area until complete. Students will remain masked and six feet apart at all times.



5

All classrooms are 15 students or less. These small groups, or cohorts, will stay together all day including at lunch and recess. Student cohorts have designated entrances, exits, and restrooms. Students with a confirmed health screening will proceed through the designated entrance.



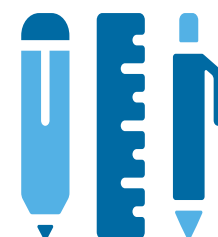
6

In the classroom, students will be assigned to seats that are six feet apart and face the same direction. Arts and physical education will be provided through a combination of remote and asynchronous learning. Students receiving in-person intensive special education services will have access to general education content remotely with support from their teacher. Classroom entrance and release times will be staggered.



7

Students will have their own materials for daily use and items will not be shared. Items coming back and forth from school to home will be limited.



8

Handwashing will be prioritized throughout the day including but not limited to on arrival, before lunch, after recess, and after using the restroom. Hand washing signage will be posted throughout the building.



9

Daily cleaning of common areas will be done in compliance with CDC and Public Health recommendations. High touch areas and restrooms will be cleaned three times a day. Additional PPE will be provided in every classroom for daily use. If there is a suspected or confirmed case of COVID-19, SPS will follow the CDC cleaning and disinfecting guidelines, contact tracing, and communication protocols.



10

When heading home, students will line up maintaining six feet between them. Students will load or be picked up at a designated area.



**Throughout the pandemic, our students have come first.** SPS remains committed to doing whatever it takes to ensure that every student thrives in any learning environment. Staff have been preparing for a phased return to in-person learning, beginning with students enrolled in Special Education Intensive Service Pathways and preschool, kindergarten, and first grade. We are ready. Health and safety protocols have been implemented, Personal Protection Equipment (PPE) is in place, and the district has prepared for student transportation and meals. While in-person learning may look different, we are committed to ensuring our classrooms remain engaging and joyful. Learn more about the district's plan at [www.seattleschools.org/resources](http://www.seattleschools.org/resources)

[www.seattleschools.org/resources](http://www.seattleschools.org/resources)