

BALLARD CHOIRS PLACEMENT INFORMATION

THANK YOU FOR YOUR INTEREST IN AUDITIONING FOR THE
2019-2020 BALLARD HIGH SCHOOL CHOIRS.

NEXT YEAR IS SURE TO BE AN EXCITING YEAR, WITH BOTH
ADVANCED CHORALE AND CONCERT CHOIR TRAVELING ON
CHOIR TOUR TO NEW YORK CITY!

PLEASE COMPLETE THE FOLLOWING STEPS:

1. Read through this audition information packet and ask for clarification if needed.
2. Prepare for your placement audition by practicing the vocal exercises.
3. Film your video placement audition! Do your best and have fun.
4. Submit your choir placement audition video to Schoology by **Friday, May 15th**.
5. Fill out the online Audition Information Sheet with the following link (that is also accessible via Schoology):
https://forms.office.com/Pages/ResponsePage.aspx?id=WNEx1HRgMkiHg1Hqb23SJ17PqAdvDERGqrR3c4F_CkpURUhLNjk3WjhCVVhPQzYzUEZDQINPOVRXSi4u

VOCAL EXERCISES

On the attached pages, choose the soprano, alto, tenor, or bass page to determine which key you should use for the vocal exercises below.

- **Major Scale:** Sing do-re-mi-fa-so-la-ti-do both ascending and descending.
- **Chromatic Scale:** Sing ascending do-di-re-ri-mi-fa-fi-so-si-la-li-ti-do, and descending do-ti-te-la-le-so-se-fa-mi-me-re-ra-do.
- **America the Beautiful:** Sing with classical tone quality, as printed in this packet.
- **Sight-Reading:** There will also be an 8-measure excerpt. You are encouraged to perform is on solfege syllables, but may use a neutral syllable such as loo.

ADDITIONAL CONSIDERATIONS

- **Team Player:** flexible in voice and character, willing to take direction
- **Committed Ensemble Member:** willing to make choir a priority by attending rehearsals and performances regularly
- **Musicianship:** strong, independent singer who is also sensitive to the ensemble needs and is able to create a unified sound

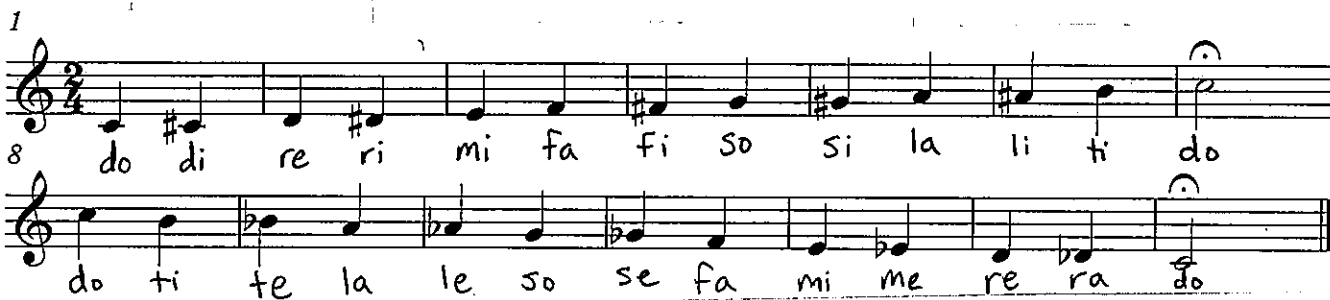
Soprano

Major Scale

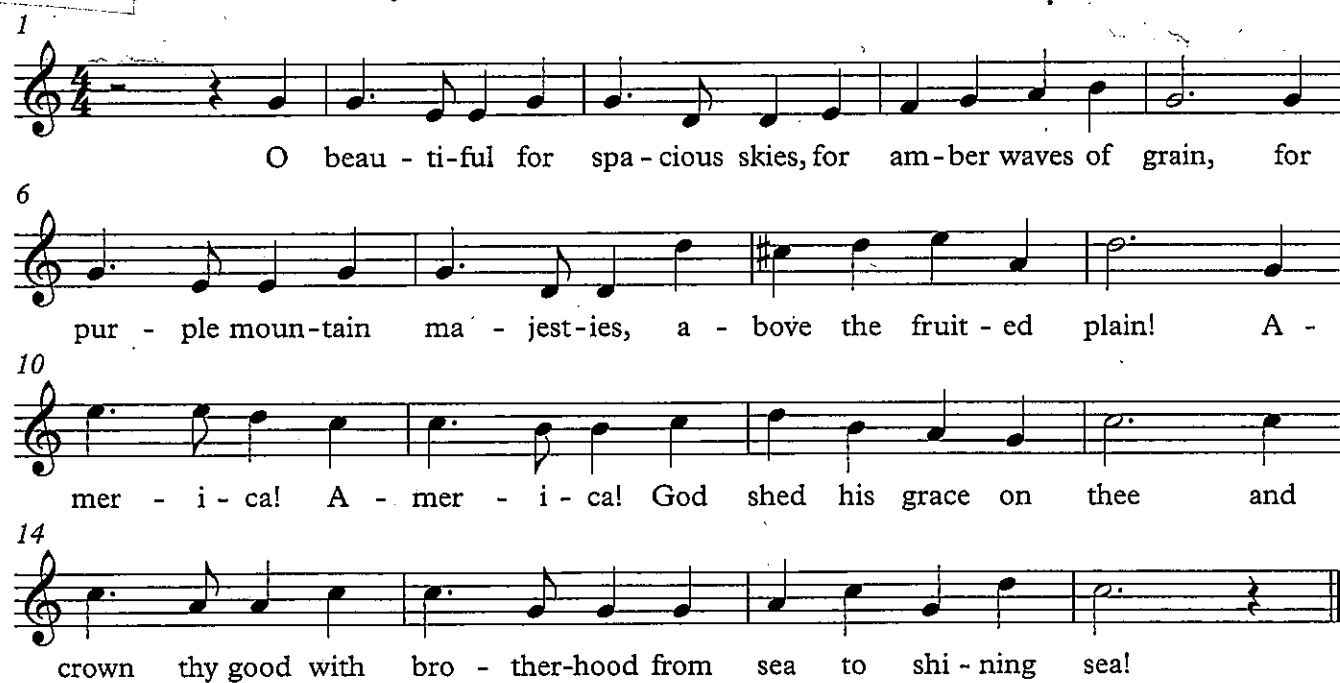
$\text{♩} = 72$



Chromatic Scale



America the Beautiful



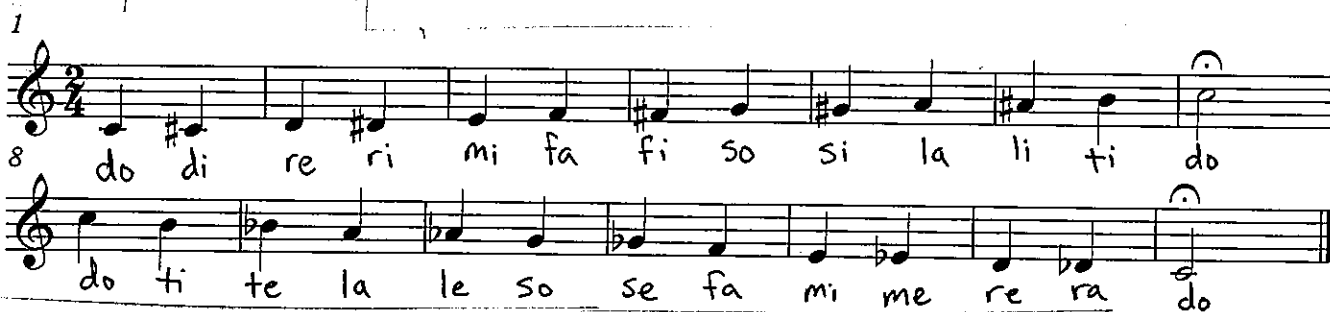
Alto

Major Scale

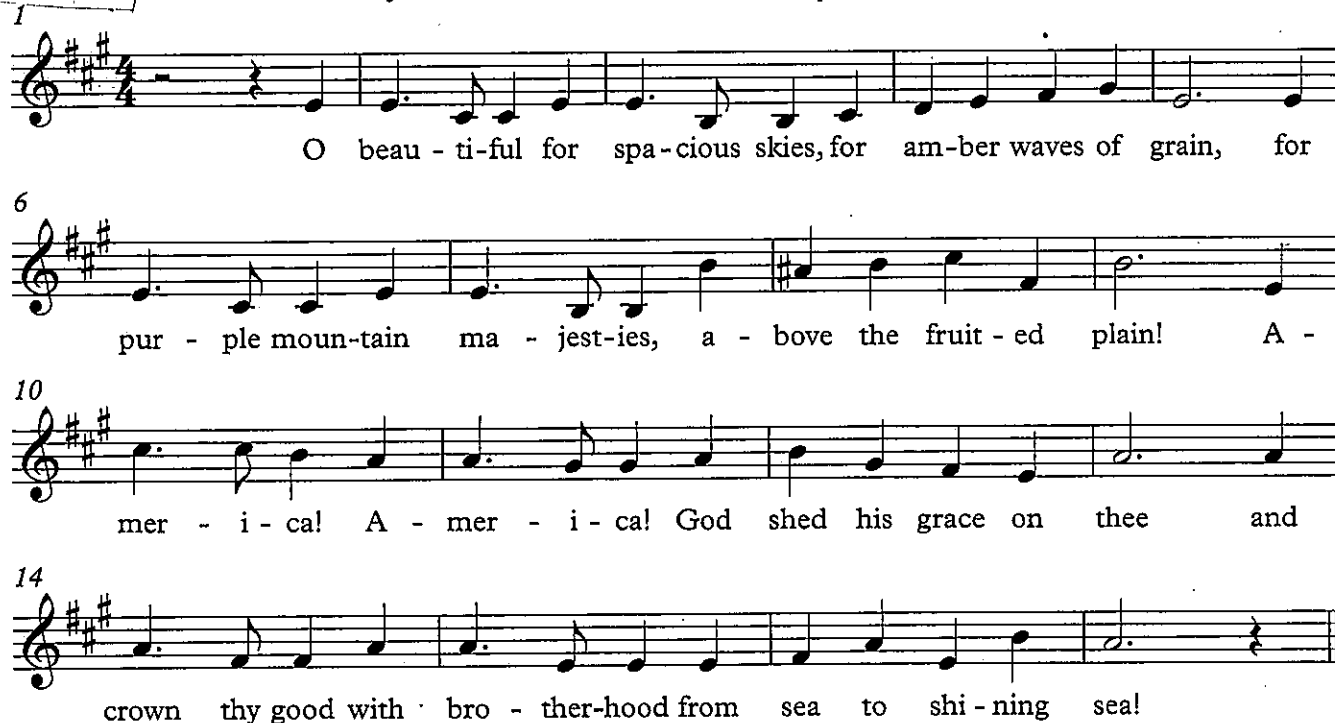
♩=72



Chromatic Scale



America the Beautiful



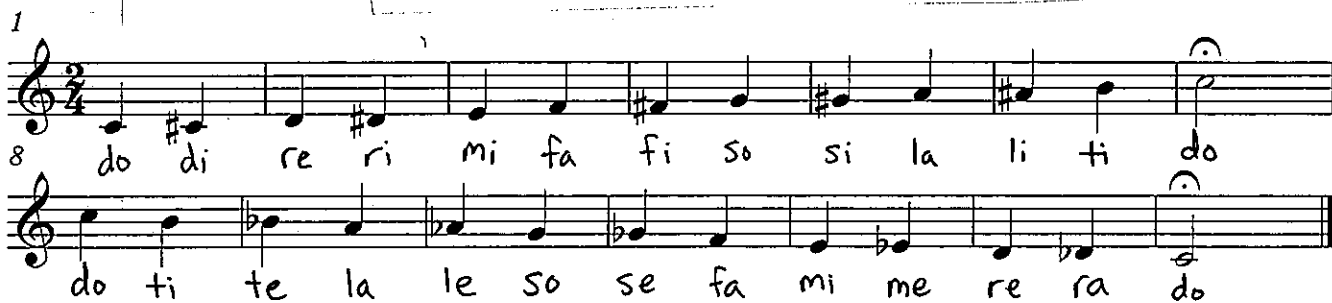
Tenor

Major Scale

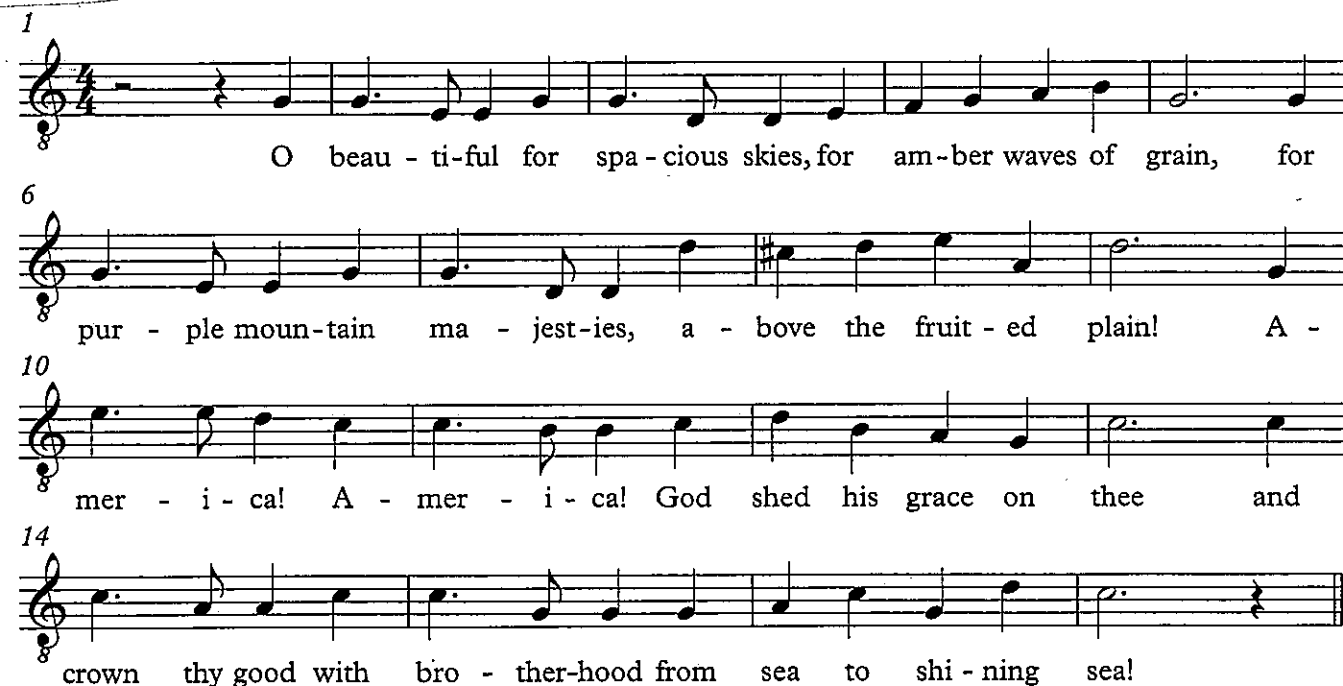
♩=72



Chromatic Scale



America the Beautiful



Baritone/Bass

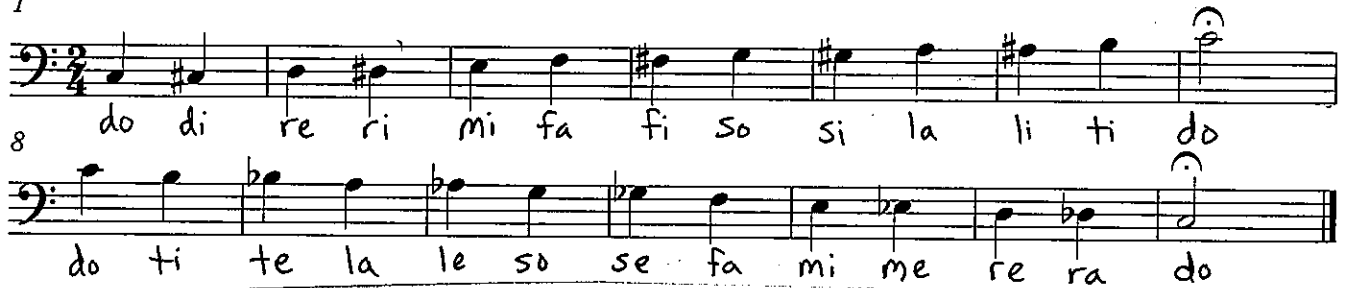
Major Scale

♩=72



Chromatic Scale

1



America the Beautiful

1

