

## SHATTERPROOF T8 LED GLASS LAMP TYPE A&B NSF COMPLIANT

### Features

Jademar's Type A+B T8 dual function which can work with specific ballast is an energy saving product as special replacement for traditional fluorescent T8 lamps.

- 3 in 1: Ballast compatible, single and double-ended ballast bypass.
- Current leakage protection passed UL1993 new Standard
- Safety: Constant current, constant power when working with HO ballast without any arc discharge issue.
- Reduces energy consumption up to 60%.
- Shatterproof design meets NSF requirements
- Lifetime: >50,000 Hours
- 5-Year Warranty
- Certifications: UL / DLC Listed

### Ordering Bar

Model	Size	Wattage	Voltage	CCT	Housing Material
JT8-AB-NSF	2FT	8W	Blank (120-277V)	30K (3000K)	FG (Frosted Glass) CG (Clear Glass)
	4FT	12W		35K (3500K)	
		15W		40K (4000K)	
		18W		41K (4100K) 45K (4500K) 50K (5000K)	

### Electrical Data Table

Product Series	JT8-AB-NSF-8W	JT8-AB-NSF-12W	JT8-AB-NSF-15W	JT8-AB-NSF-18W
Nominal Wattage	8W	12W	15W	18W
Size	2FT	4FT		
Average Lumen Efficacy	113 Lms/W	134 Lms/W	137 Lms/W	130 Lms/W
Average Lumens	954 Lms	1755 Lms	2312 Lms	1804 Lms
Voltage	120-277V			
Base Type	G13			
CRI	>83			
Power Factor	>0.90			
THD @ 120V	<20%			
Ambient Working Temperature	0°C to +40°C			
Beam Angle	320°			
Construction	Frosted & Clear Glass (PET Film) Options			
Certifications	UL / DLC Listed			
Lifetime	>50,000 Hours			
Warranty	5 Years			

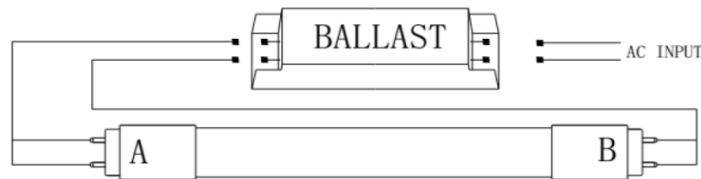


Miami, FL USA - info@jademar.com  
T: 305.640.0465 - F: 305.640.0468  
**WWW.JADEMAR.COM**

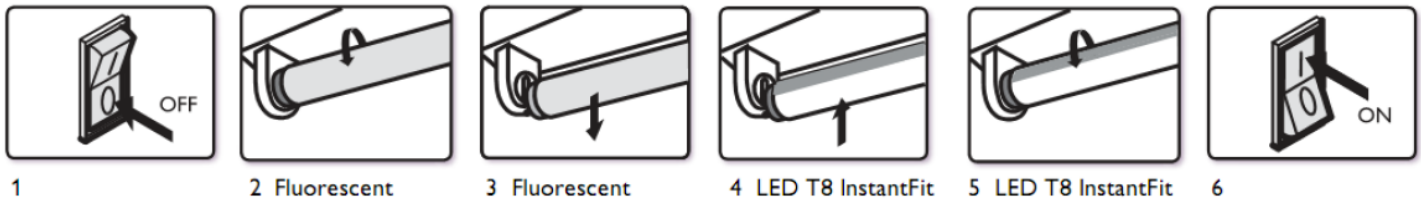


Information contained herein is subject to change without notice.  
Values are nominal. All values conform to DLC tolerances.  
Revised 10/2019

### TYPE A (Ballast Compatible)



### Type A Installation Guide:



### TYPE B (AC Directly - Single End and Double Ballast Bypass)

1.



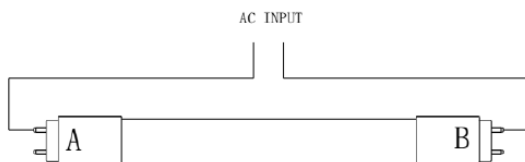
Input voltage:120-277V 50/60Hz

2.



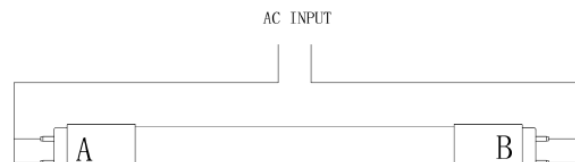
Input voltage:120-277V 50/60Hz

3.



Input voltage:120-277V 50/60Hz

4.



Input voltage:120-277V 50/60Hz

