



Ms. Kate Donegan
Superintendent
Kenilworth School District No. 38

BACK **to** **SCHOOL** **2021-2022**

Plan Overview - State Guidelines

RESTORE ILLINOIS



Phase 1 Rapid Spread	Phase 2 Flattening	Phase 3 Recovery	Phase 4 Revitalization	Phase 5 Illinois Restored
<p>Strict stay at home and social distancing guidelines are put in place, and only essential businesses remain open.</p> <p>Every region has experienced this phase once already and could return to it if mitigation efforts are unsuccessful.</p>	<p>Non-essential retail stores reopen for curb-side pickup and delivery.</p> <p>Illinoisans are directed to wear a face covering when outside the home and can begin enjoying additional outdoor activities like golf, boating & fishing while practicing social distancing.</p>	<p>Manufacturing, offices, retail, barbershops and salons can reopen to the public with capacity and other limits and safety precautions.</p> <p>Gatherings of 10 people or fewer are allowed.</p> <p>Face coverings and social distancing are the norm.</p>	<p>Gatherings of 50 people or fewer are allowed, restaurants and bars reopen, travel resumes, child care and schools reopen under guidance from the Illinois Department of Public Health.</p> <p>Face coverings and social distancing are the norm.</p>	<p>The economy fully reopens with safety precautions continuing.</p> <p>Conventions, festivals and large events are permitted, and all businesses, schools and places of recreation can open with new safety guidance and procedures.</p>



JOSEPH SEARS

Plan Overview - Guiding Principles

Based on guidelines from:

- Illinois State Board of Education
 - Governor's Restore Illinois Phases
 - Center for Disease Control
 - Illinois Department of Public Health
 - Cook County Department of Public Health
- Maintain the health and safety of all students and staff
 - Provide meaningful and engaging academic experience for all students
 - Address the social and emotional needs of all students



Plan Assumptions

In this plan we assume:

- We are in school and following Restore Illinois Phase 5 guidelines.
- 100% of our faculty and staff will be able to support in-person learning.
- 100% of our students will participate in in-person learning.
- Our teachers, students, or their family members may become ill with COVID-19, will need to seek treatment or quarantine, and will be unable to participate in any teaching or learning at various times throughout the year.



JOSEPH SEARS

2021-2022 Back to Traditional Movement in the Building

- Students may move between groups
- Students will have access to traditional learning spaces, such as gym, art, library, playground, etc.
- Teachers will have their own classrooms or offices, and students will go to these locations.



Calendars & Schedules

District 38 plans to start the 2020-2021 school year on **August 16** for faculty and staff with the first day for students being **August 18**.

- Last year we had 3 two-week breaks to allow for travel quarantine. This year, we return to a traditional school calendar and school breaks.
- We are starting earlier and ending before Memorial Day. This is due to the Master Facilities Plan related construction and not due to COVID-19 protocols.

The Joseph Sears School							2021-2022 Calendar						
							August 2021						
Su	M	Tu	W	Th	F	S	Su	M	Tu	W	Th	F	S
1	2	3	4	5	6	7	1	2	3	4	5	6	7
8	9	10	11	12	13	14	8	9	10	11	12	13	14
15	16	17	18	19	20	21	15	16	17	18	19	20	21
22	23	24	25	26	27	28	22	23	24	25	26	27	28
29	30	31					29	30	31				
							September 2021						
Su	M	Tu	W	Th	F	S	Su	M	Tu	W	Th	F	S
1	2	3	4	5	6	7	1	2	3	4	5	6	7
8	9	10	11	12	13	14	8	9	10	11	12	13	14
15	16	17	18	19	20	21	15	16	17	18	19	20	21
22	23	24	25	26	27	28	22	23	24	25	26	27	28
29	30	31					29	30	31				
							October 2021						
Su	M	Tu	W	Th	F	S	Su	M	Tu	W	Th	F	S
1	2	3	4	5	6	7	1	2	3	4	5	6	7
8	9	10	11	12	13	14	8	9	10	11	12	13	14
15	16	17	18	19	20	21	15	16	17	18	19	20	21
22	23	24	25	26	27	28	22	23	24	25	26	27	28
29	30	31					29	30	31				
							November 2021						
Su	M	Tu	W	Th	F	S	Su	M	Tu	W	Th	F	S
1	2	3	4	5	6	7	1	2	3	4	5	6	7
8	9	10	11	12	13	14	8	9	10	11	12	13	14
15	16	17	18	19	20	21	15	16	17	18	19	20	21
22	23	24	25	26	27	28	22	23	24	25	26	27	28
29	30	31					29	30	31				
							December 2021						
Su	M	Tu	W	Th	F	S	Su	M	Tu	W	Th	F	S
1	2	3	4	5	6	7	1	2	3	4	5	6	7
8	9	10	11	12	13	14	8	9	10	11	12	13	14
15	16	17	18	19	20	21	15	16	17	18	19	20	21
22	23	24	25	26	27	28	22	23	24	25	26	27	28
29	30	31					29	30	31				
							January 2022						
Su	M	Tu	W	Th	F	S	Su	M	Tu	W	Th	F	S
1	2	3	4	5	6	7	1	2	3	4	5	6	7
8	9	10	11	12	13	14	8	9	10	11	12	13	14
15	16	17	18	19	20	21	15	16	17	18	19	20	21
22	23	24	25	26	27	28	22	23	24	25	26	27	28
29	30	31					29	30	31				
							February 2022						
Su	M	Tu	W	Th	F	S	Su	M	Tu	W	Th	F	S
1	2	3	4	5	6	7	1	2	3	4	5	6	7
8	9	10	11	12	13	14	8	9	10	11	12	13	14
15	16	17	18	19	20	21	15	16	17	18	19	20	21
22	23	24	25	26	27	28	22	23	24	25	26	27	28
29	30	31					29	30	31				
							March 2022						
Su	M	Tu	W	Th	F	S	Su	M	Tu	W	Th	F	S
1	2	3	4	5	6	7	1	2	3	4	5	6	7
8	9	10	11	12	13	14	8	9	10	11	12	13	14
15	16	17	18	19	20	21	15	16	17	18	19	20	21
22	23	24	25	26	27	28	22	23	24	25	26	27	28
29	30	31					29	30	31				
							April 2022						
Su	M	Tu	W	Th	F	S	Su	M	Tu	W	Th	F	S
1	2	3	4	5	6	7	1	2	3	4	5	6	7
8	9	10	11	12	13	14	8	9	10	11	12	13	14
15	16	17	18	19	20	21	15	16	17	18	19	20	21
22	23	24	25	26	27	28	22	23	24	25	26	27	28
29	30	31					29	30	31				
							May 2022						
Su	M	Tu	W	Th	F	S	Su	M	Tu	W	Th	F	S
1	2	3	4	5	6	7	1	2	3	4	5	6	7
8	9	10	11	12	13	14	8	9	10	11	12	13	14
15	16	17	18	19	20	21	15	16	17	18	19	20	21
22	23	24	25	26	27	28	22	23	24	25	26	27	28
29	30	31					29	30	31				
							June 2022						
Su	M	Tu	W	Th	F	S	Su	M	Tu	W	Th	F	S
1	2	3	4	5	6	7	1	2	3	4	5	6	7
8	9	10	11	12	13	14	8	9	10	11	12	13	14
15	16	17	18	19	20	21	15	16	17	18	19	20	21
22	23	24	25	26	27	28	22	23	24	25	26	27	28
29	30	31					29	30	31				

Aug 16 & 17 - Teacher Institute days
Aug 18 - First day of school/meet greet (8:10-1:10)

Sept 6 - Labor Day
Sept 7 - Rosh Hashanah
Sept 16 - Yom Kippur

Oct 11 - Teacher Institute Day
Oct 21/22 - P/T conferences

Nov 24-26 - Thanksgiving Break

Dec 20-31 Winter Break

Jan 17 - MLK day

Feb 11 - P/T conferences
Feb 18- Teacher Institute Day
Feb 21 - President's Day

Week of March 28- Spring Break

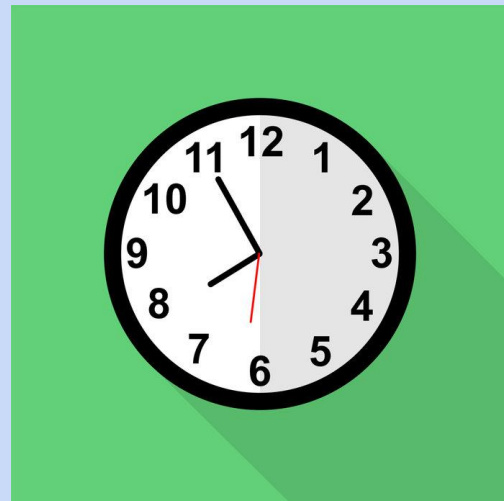
April 1 - Spring Break
April 15 - Good Friday

May 26 - Last day of school/8th Graduation

Daily Schedule

Monday through Friday, 8:10 a.m. to 3:15 p.m.

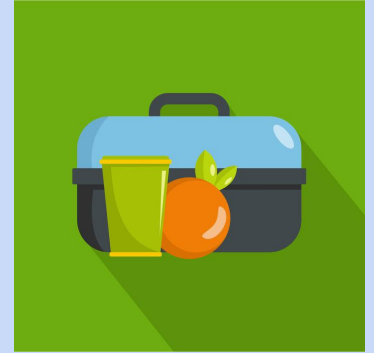
- Anytime between 8:00 a.m. and 8:10 a.m., students may enter the building. Once in the building the students will be monitored by a hallway supervisor where they can access their locker and get their materials ready for the school day. Students will be greeted by their teacher and will enter their classroom at 8:10 a.m.



JOSEPH SEARS

Lunch

Monday through Friday, 11:49 a.m. to 12:39 p.m.

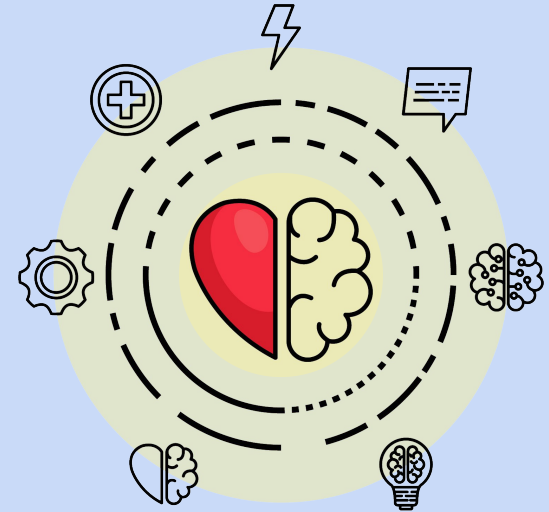


- Trimester-based lunch registration for open campus
- Marla's Lunch is available through the JSSPVA
- For students who forget lunch, families can drop off lunch in the front office by 11:30 a.m.
- Lunch will be staggered in the Gym (grades K through 4), Auditorium (grades 5 and 6), and Village House (grades 7 and 8)

Assessing Academic Achievement & Social-Emotional Well-Being

Student academic achievement and social emotional well-being will be assessed at the beginning of the school year.

- Teachers will use assessment data to differentiate for students within the classroom.
- Teachers will develop intervention and enrichment plans for students as needed.
- Student interventions and enrichment will be provided within the classroom and within our W.I.N. (What I Need) block in elementary grades and during Specials and World Language in junior high.
- Social and Emotional Learning Instruction will be provided school-wide and at each grade-level.



JOSEPH SEARS

Extracurriculars

Resuming:

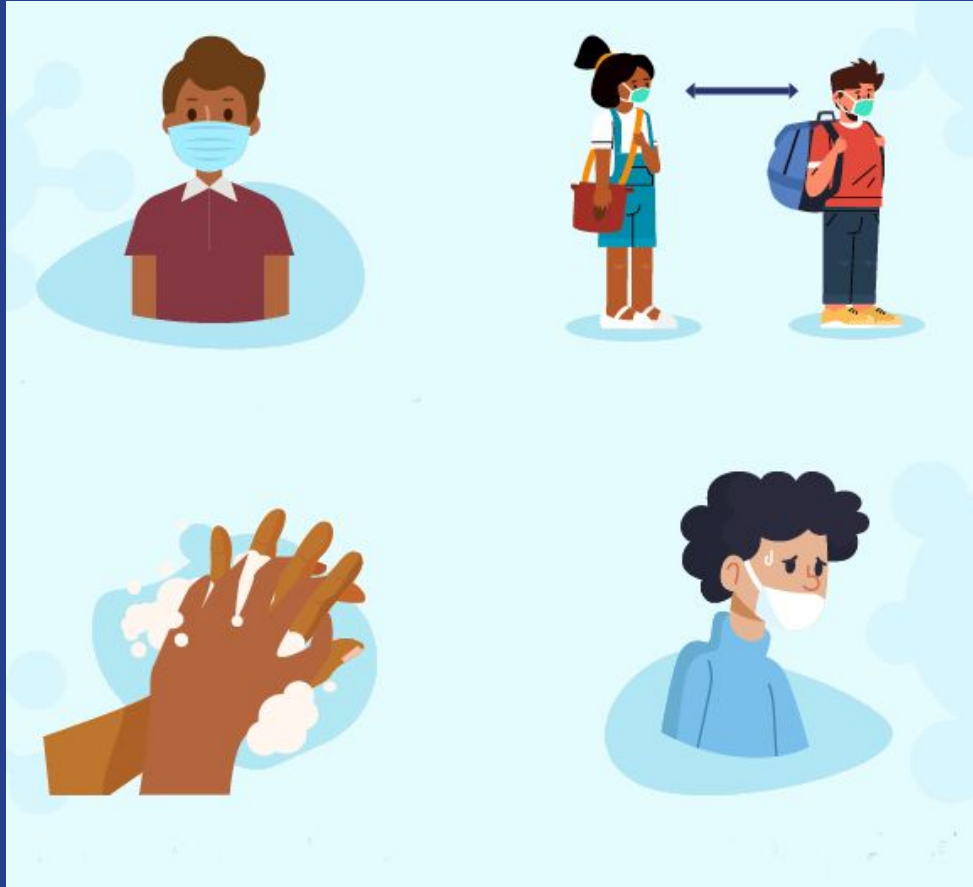
- Field trips
- Before and after-school clubs and activities
- Athletics

Not Resuming:

- Due to in-person lunch protocols and construction, lunch clubs will not be provided.

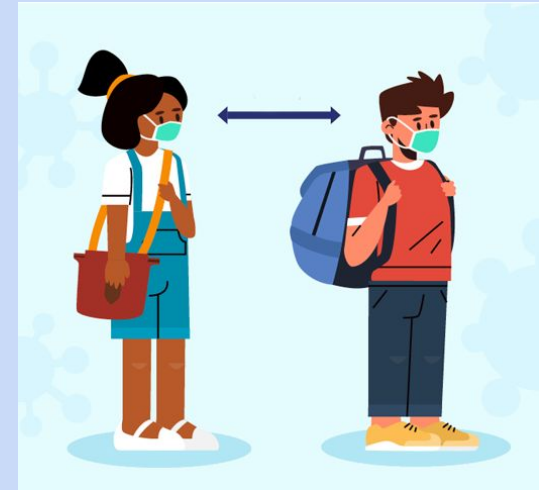


Safety



Layered Mitigation Strategies - Recommendations from CCDPH

1. **Vaccination**
2. **Mask Up**
3. **Physical Distancing**
4. **Screening, testing, and reporting**
5. **Ventilation**
6. **Hygiene**
7. **Stay home when sick**
8. **Contact tracking, isolation and quarantine**
9. **Cleaning and disinfection**



JOSEPH SEARS

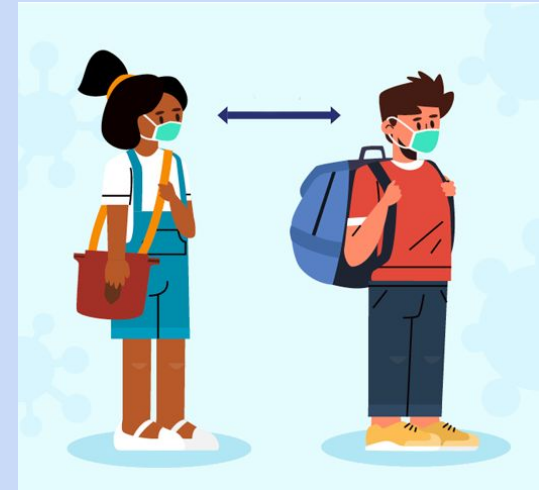
PPE and Hygiene Protocols

- **Face coverings** - Required for everyone in the building at all times except when eating / drinking. ***This expectation is the same for all individuals in the school, vaccinated and unvaccinated.*** A physician's note will be needed for students / staff who cannot wear a face covering.
- **Hand washing** - Scheduled when entering school, leaving school, before eating, and after eating.
- **Bathroom use** - Bathrooms will return to traditional use and will not be monitored by a volunteer.
- **Hand sanitizer** - Sanitizer stations at all entrances and in / near all classrooms.
- **Water fountains** - Water bottle filling only.



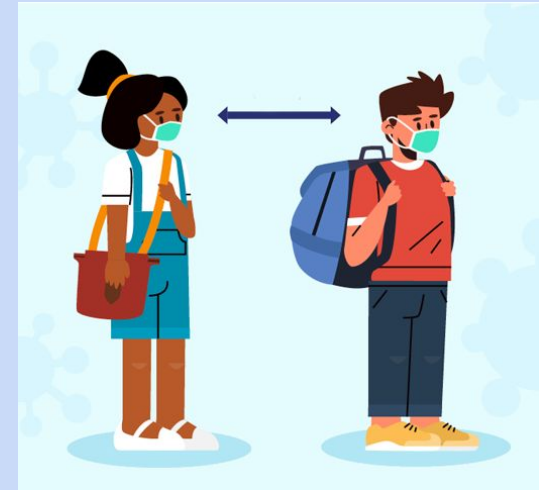
Physical Space / Distancing

- **Use of multiple entrances** - Students entering school nearest their classrooms, with some grades sharing an entrance.
- **Entrance and exit** - All students will report to school between 8:00 AM and 8:10 AM. Students will be tardy at 8:10 AM.
- **Floor markings** - Used inside and outside school as visual reminder for distancing. Students will maintain a minimum distance of 3 feet while indoors, when possible.
- **Use of large space / outdoor space** - Return to use of outdoor spaces, and reduced capacity in large indoor spaces.
- **Meetings** - will be held virtually and in-person.



Quarantine Learning

- Remote learning in the form we had last year is not available for individual students in isolation or quarantine this school year. We may need to use grade, classroom or school wide remote learning if we have a COVID-19 outbreak.
- Otherwise, teachers will collect the work for the isolated or quarantining student and leave it in the front office for pick-up by a parent.



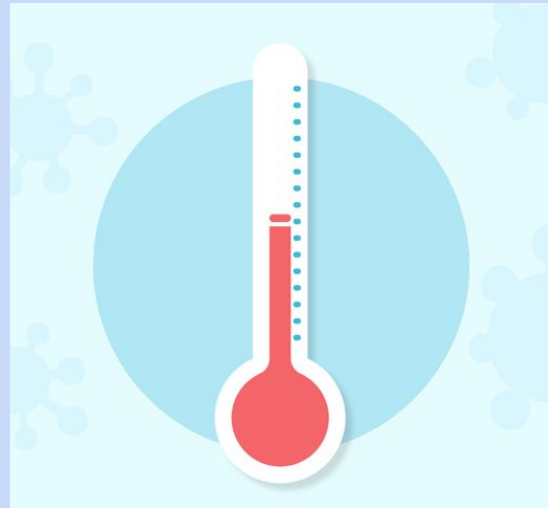
Cleaning & Disinfecting

- **Cleaning** - Porters during school day for high touch surfaces, deep cleaning nightly
- **EPA approved disinfectants** - Soap and water to be used when disinfectants should not be used, such as on children's toys.
- **Cleaning protocols** - Will be in place including protocols for cleaning when students or staff members become ill.



Health Screening

- **Screening before entering school** - All students and staff will self-screen for symptoms before coming into the building each day.
- If symptoms are present, the individual must stay home. The nurse will follow-up on next steps.



Responding to Illness

- **When individuals show symptoms at school -**
Those who are experiencing unexplained COVID-19-like symptoms will be sent home. We will follow CDC guidelines for returning to school.
- **Individuals who test positive for COVID-19 -** Will follow CDC guidelines for returning to school/work.
- **Students and staff exposed to COVID-19 may reduce quarantine through testing -**
 - All unvaccinated close contacts of COVID-19 can reduce their quarantine by providing a negative rapid antigen COVID-19 test to the school on days 1, 3, 5 and 7. More specific information will be provided to families of students in this particular situation.
 - Vaccinated close contacts can reduce their quarantine by providing a rapid antigen negative COVID-19 test to the school between days 3-5 from date of last exposure.



Providing Proof of Vaccination

- Individuals do not need to provide proof of vaccination to the District. Instead, we will be using I-CARE, the Illinois Comprehensive Automated Immunization Registry Exchange, to determine vaccination status when advising families and employees on their isolation and quarantine procedures.
- I-CARE is designed to protect patient confidentiality while providing access to statewide registry information. Confidentiality is maintained through several security controls.



JOSEPH SEARS

Attendance and Travel

- **Attendance** - In the event that a child will be absent, please contact the teacher and attendance@kenilworth38.org or the Attendance phone line at 847-853-3866 before 8:10 a.m. and state the reason for the child's absence. If you fail to notify the school about an absence, the school will attempt to reach parents.
- **Travel quarantine** - We are following the Cook County Department of Public Health's travel quarantine guidelines. We ask families to adhere to these guidelines when returning to school after traveling.



Community

Please help us keep everyone safe by:

- Reviewing and reinforcing school safety guidelines
- Adhering to safety guidelines at home and within the community
- Informing school officials of student and/or family illness

Let's have a safe and wonderful year together!



**BACK to
SCHOOL**
2021-2022



JOSEPH SEARS