

Prepared to Pivot

2020-2021

Plan for a required pivot to
Whole-School Remote Learning



Ms. Kate Donegan
Superintendent
Kenilworth School District No. 38



JOSEPH SEARS

Plan Overview - Guiding Principles

- Based on all guidance and feedback
 - Illinois State Board of Education
 - Governor's Restore Illinois Phases
 - Center for Disease Control
 - Illinois Department of Public Health
 - American Pediatric Association
 - Illinois Principal Association, Illinois Association of School Administrators, National Education Association
 - Remote Learning Survey, Family Fall Planning Survey, 2020-21 Trimester One Survey
- Maintain the health and safety of all students and staff
- Allow for the maximum amount of uninterrupted in-person learning
 - Allowing for the most flexibility for anticipated faculty and staff absences
 - Allowing for the most flexibility for anticipated student absences
- Provide meaningful and engaging academic experience for all students
- Address the social and emotional needs of all students



Plan Overview

A pivot to Whole-School Remote Learning will happen if:

- Illinois returns to Phase III of the Restore Illinois Plan and in-person learning is not an option
- If the Cook County Department of Public Health directs or advises us to go remote
- COVID-19 spreads in the immediate community which risks conducting any onsite schooling
- It can be a short-term or an extended pivot

RESTORE ILLINOIS

A Public Health Approach To Safely Reopen Our State

Phase 1 Rapid Spread	Phase 2 Flattening	Phase 3 Recovery	Phase 4 Revitalization	Phase 5 Illinois Restored
-------------------------	-----------------------	---------------------	---------------------------	------------------------------





Considerations

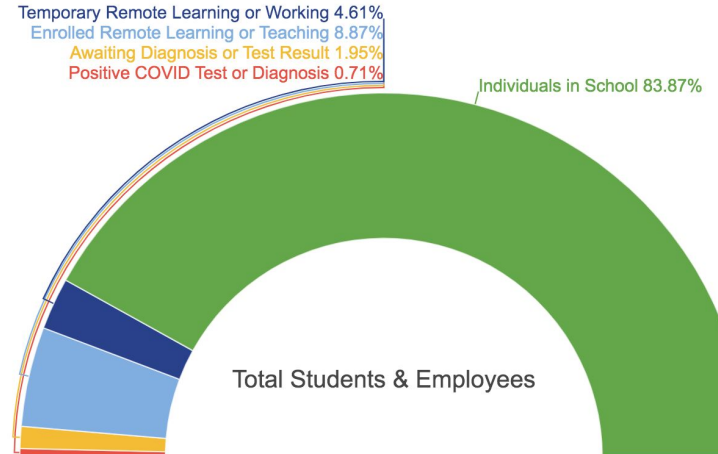
- Metrics: review our COVID-19 metrics dashboard at kenilworth38.org/covid19
- Cook County Department of Public Health (CCDPH) may tell us to close based on positive or close contact cases.
- If the educational/instructional programming is negatively impacted due to student or employee absences.



THE JOSEPH SEARS SCHOOL

COVID-19 Data & Metrics

Summary of Student and Staff Status as of 10/20/2020



Joseph Sears School Calendar

2020-2021 School Calendar

August 2020

Su	M	Tu	W	Th	F	S
						1
2	3	4	5	6	7	8
9	10	11	12	13	14	15
16	17	18	19	20	21	22
23	24	25	26	27	28	29
30	31					

(6 student days)

September 2020

Su	M	Tu	W	Th	F	S
						1
2	3	4	5	6	7	8
9	10	11	12	13	14	15
16	17	18	19	20	21	22
23	24	25	26	27	28	29
30						

(21 student days - 27 total)

October 2020

Su	M	Tu	W	Th	F	S
					1	2
3	4	5	6	7	8	9
10	11	12	13	14	15	16
17	18	19	20	21	22	23
24	25	26	27	28	29	30
31						

(22 student days - 49 total)

November 2020

Su	M	Tu	W	Th	F	S
1	2	3	4	5	6	7
8	9	10	11	12	13	14
15	16	17	18	19	20	21
22	23	24	25	26	27	28
29	30					

(16 student days - 65 total)

December 2020

Su	M	Tu	W	Th	F	S
						1
2	3	4	5	6	7	8
9	10	11	12	13	14	15
16	17	18	19	20	21	22
23	24	25	26	27	28	29
30	31					

(10 student days - 75 total)

January 2021

Su	M	Tu	W	Th	F	S
						1
2	3	4	5	6	7	8
9	10	11	12	13	14	15
16	17	18	19	20	21	22
23	24	25	26	27	28	29
30	31					

(20 student days - 95 total)

February 2021

Su	M	Tu	W	Th	F	S
1	2	3	4	5	6	7
8	9	10	11	12	13	14
15	16	17	18	19	20	21
22	23	24	25	26	27	28
29						

(20 student days - 115 total)

March 2021

Su	M	Tu	W	Th	F	S
1	2	3	4	5	6	7
8	9	10	11	12	13	14
15	16	17	18	19	20	21
22	23	24	25	26	27	28
29	30	31				

(20 student days - 135 total)

April 2021

Su	M	Tu	W	Th	F	S
					1	2
3	4	5	6	7	8	9
10	11	12	13	14	15	16
17	18	19	20	21	22	23
24	25	26	27	28	29	30

(15 student days - 150 total)

May 2021

||
||
||

Pivoting Communication

If/when we need to pivot to Whole-School Remote Learning

- Parents would be notified by a school email and a school-generated phone call. [Sample Pivot Parent Communication](#).
- At that point the school would **implement two non-attendance student days** for teacher preparation.
- Teacher/Team message to each grade-level, including a Remote Learning checklist and materials pick-up information.
- A 'Second Cup of Coffee' Q&A Zoom would be scheduled on the second transition day.
- [2020-2021 Parent Guide to Remote Learning](#).



Remote Learning Improvements

The whole-school **Remote Learning Design Team** has been collaborating on online learning experiences and has integrated the updated Remote Learning Guidelines from ISBE.



Remote Learning Improvements

- At least **5 hours** of daily learning, which includes:
 - Synchronous online learning
 - Asynchronous learning
 - Teacher-facilitated instruction
 - Independent work/learning activities
- Minimum of **2.5 hours** of synchronous instruction
- Follow typical school grading guidelines
- Students participate in learning through an online environment with set schedules



Sample Daily Schedule

Monday-Friday: 8:10 a.m.-3:15 p.m. (1:10-2:00 p.m lunch)

NOTE: This schedule is different from the Remote Learning option available to families who elected to OPT-OUT of In-Person Learning and different from Spring 2020.

Elementary **Sample** Student Schedule

Grades K-5: 8:40 AM–1:10 p.m. Daily Schedule (Start time differs from in-person because entrance procedures into school will take 30 minutes).

Primary Grade Level Example (K-4)	Fifth Grade Example
All teachers have SEL time from 8:40-8:50	
8:50 - 12:10 Math, ELA, Science or Social Science, Creative Arts	8:40 - 11:10 Math, ELA, Science or Social Science, Creative Arts
	11:10 - 11:40 - WL
12:10 - 12:40 WL Kindergarten - Monday Only First Grade - Tuesday Only Second Grade - Wednesday Only Third Grade - Thursday Only Fourth Grade - Friday Only	11:40 - 1:10 Math, ELA, Science or Social Science, Creative Arts
12:40 - 1:10 Math, ELA, Science or Social Science, Creative Arts	SEL on Friday
1:10 - 2:00 Lunch	1:10 - 2:00 Lunch
2:00 - 3:15 Extended Asynchronous Learning	2:00 - 3:15 Extended Asynchronous Learning

Junior High **Sample** Student Schedule

Grades 6-8: 8:40 AM–1:10 p.m. Daily Schedule (Start time differs from in-person because entrance procedures into school will take 30 minutes).

Period	Grade Level 6	Grade Level 7	Grade Level 8
	All students have SEL time from 8:40-8:50		
1	8:52-9:22 WL	8:52-9:32 Core	8:52-9:32 Core
2	9:24-10:04 Core	9:34-10:04 WL	9:34-10:14 Core
3	10:06-10:46 Core/CA	10:06-10:46 Core	10:16-10:46 WL
4	10:48-11:28 Core	10:48-11:28 Core	10:48-11:28 Core
5	11:30-12:10 Core	11:30-11:46 Break	11:30-11:46 Break
6	12:12 - 12:28 Break	11:48 - 12:28 Core/CA	11:48 - 12:28 Core
7	12:30-1:10 Core	12:30-1:10 Core	12:30-1:10 Core/CA
Lunch	1:10-2:00 Lunch	1:10-2:00 Lunch	1:10-2:00 Lunch
Asynchronous	2:00-3:15 Asynchronous Extended Learning	2:00-3:15 Asynchronous Extended Learning	2:00-3:15 Asynchronous Extended Learning

Improvements for Parents

Check out our Remote Learning Guide and Sears Parent Tech Website

- **Updated!** [2020-2021 Parent Guide to Remote Learning](#)
- **New!** [Parent Tech Website](#)
 - [Canvas](#)
 - [Seesaw](#)
 - [PowerSchool](#)
 - [Parental Controls](#)
- [Securly @ home filter JK-8](#)
- [Remote Learning Website](#)



Remote Learning Preparations

Parent can prepare in advance by:

- Setting-up home learning environment for student(s)
 - Dedicated individual work space with desk
 - Headphone/microphone
 - Schedule physical activity

Set up parent accounts:

- [Seesaw Family Account](#) (JK-4th Grade)
- [Canvas Parent](#) Account (5th-8th Grade)
- [PowerSchool](#) (6th-8th Grade)

**Seesaw
Parent**



**Canvas
Parent**



**Powerschool
Parent**





JOSEPH SEARS

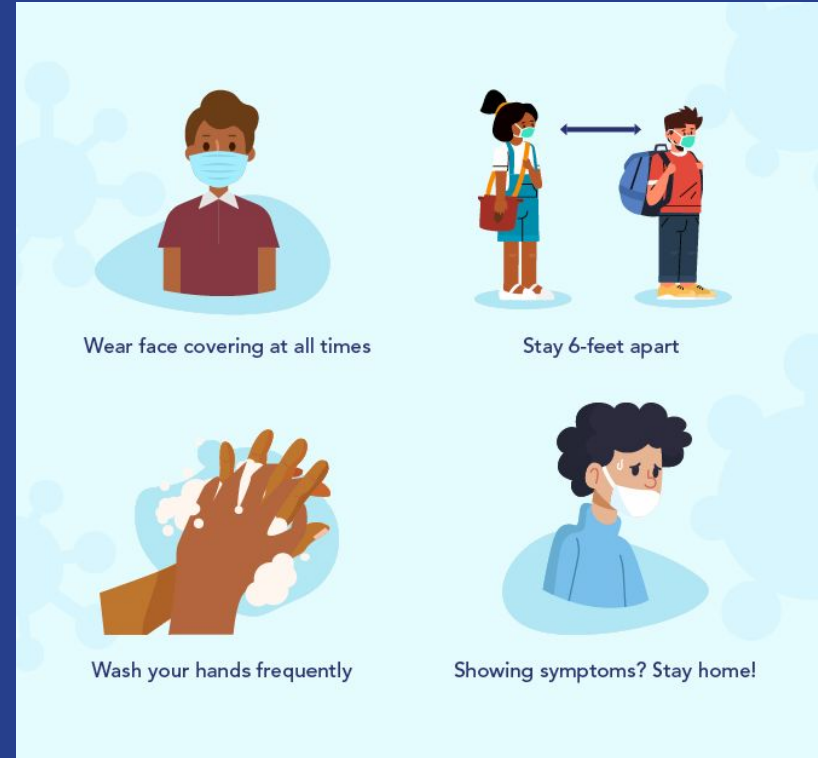
Articles and Tips for Parents

- [How to Set Up a Remote Learning Space for Your Kids](#)
- [Parents Tips and Tricks](#)
- [Wide Open Schools - Family Resources](#)
- [Seesaw: Learning at Home Tips for Families](#)
- [Seesaw: Tech-Free Home Learning Ideas](#)

All in this together ...

Community responsibility to follow COVID-19 health and safety guidelines

- Wear a mask and physically distant whenever possible
- Keep your student home when symptomatic for illness
- Follow travel and quarantine restrictions
- Avoid gatherings



Prepared to Pivot

2020-2021

Plan for a required pivot to
Whole-School Remote Learning



Ms. Kate Donegan
Superintendent
Kenilworth School District No. 38