

Newsletter of Workforce Solutions Alamo Student HireAbility Navigators

What is a Student HireAbility Navigator and what is their role?

The role of the Student HireAbility Navigator (SHN) is to improve access to employment and training services for individuals with disabilities and exceptionalities. The SHN increases the availability of employment opportunities through viable partnerships and bridging resources from employers, the San Antonio-area chambers of commerce, chambers of commerce for the 13-counties region, the City of San Antonio, post-secondary institutions, among other community partners.

Although the role of SHNs don't provide direct service delivery, they serve as a resource in the field of workforce development. SHNs supports, expand, and enhance the provision of Pre-ETS that are provided by Vocational Rehabilitation (VR) Counselors as well as other partners and workforce programs. In the Alamo area, **Janice Onyejiako** & **Donna Mims** are the Board's Student HireAbility Navigators.



DID YOU KNOW?

- Workforce Solutions Alamo assists individuals who are not only looking for a career change, but we also assist with childcare assistance programs, work readiness training and apprenticeships, post-secondary programs, and adult literacy programs, just to name a few.
- Skills to Succeed is a FREE and online-accessible tool. S2S can be accessed using your computer, tablet, or smartphone.
 - S2S assists learners in building the skills and confidence needed to explore smart and individualized career choices.
 - Contact your assigned VR counselor or go to <https://s2sacademy.org> to learn more.

WORKFORCE SOLUTIONS ALAMO SERVICE AREA

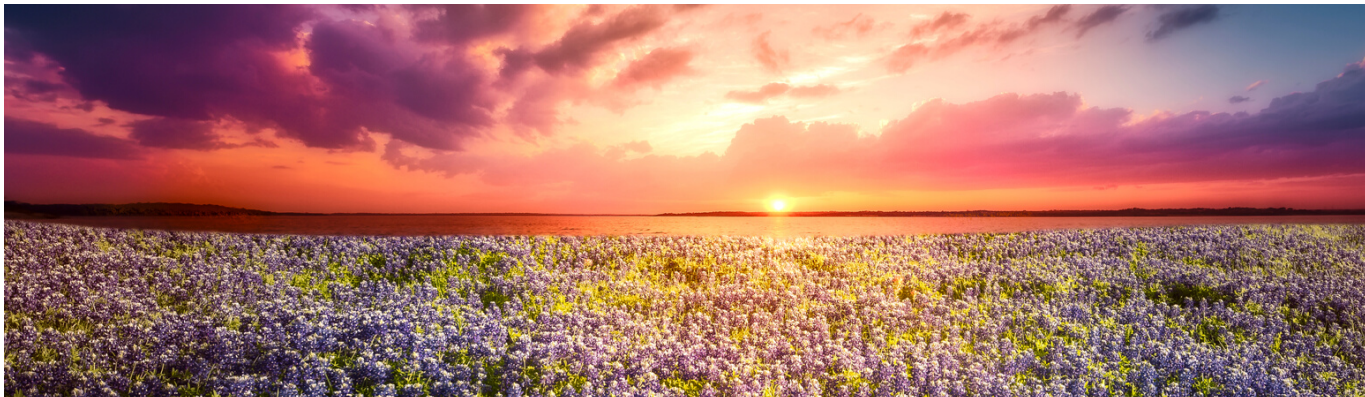
There is a Workforce Solutions Career Center in each of the 13 counties we serve. Many services are FREE to the public and include access to computers, scanners, copiers, and fax services. There is specialized equipment for individuals who are blind or visually impaired.



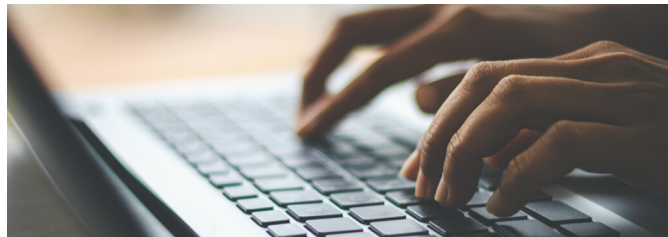
MAY CELEBRATION

Although we have had to social distance over the past several weeks, there are some exciting celebrations during the month of May!

- National Mobility Awareness Month
- Stroke Awareness Month
- Lyme Disease; Lupus Awareness; Cystic Fibrosis; and ALS Awareness Month
- National Military Appreciation Month
- Military Spouse Appreciation Day: 5/8
- Mother's Day: 5/10
- Global Accessibility Awareness Day: 5/16
- Memorial Day: 5/25
- World MS Awareness Day: 5/30



CONTACT RESOURCES



- Workforce Solutions: www.workforcesolutionsalamo.org
- Texas Workforce Commission: www.twc.texas.gov
- Skills 2 Succeed: <https://s2sacademy.org>
- Labor Market Information: <https://lmci.state.tx.us/>
- SHN Alamo North: Janice Berechi Onyejiako-
jberechionyejiako@wsalamo.org
- SHN Alamo South: Donna Mims- dmims@wsalamo.org

SHN Capacity Building & Responsibilities

In each newsletter issue, Navigators will highlight and discuss some of the pertinent capacity building instructions and measures, which are enforced by the Texas Workforce Commission (TWC).

For the month of May, we will focus on the following: Increase community & system awareness of the resources and activities available to students with exceptionalities, to include the following five (5) pre-employment transition services (pre-ETS):

Job (career) exploration counseling; work-based learning experiences in an integrated environment to the maximum extent possible; counseling on opportunities for enrollment in comprehensive transition or post-secondary educational programs at institutions of higher education; workplace readiness training (WRT) to develop social skills and independent living; and instruction in self-advocacy, which may include peer mentoring.

Upcoming Events

All Workforce Solutions Alamo In-Person Events Are Postponed

Due to the impact of the COVID-19 pandemic, all WSA in-person gatherings including the Morgan's Wonderland joint venture & 2020 Summer Earn & Learn (SEAL) have been cancelled, until further notice.

Please continue to check for updates at:
Local: www.workforcesolutionsalamo.org
State: www.twc.texas.gov

