



SAILING  
SCIENCE  
CENTER

# SSC Trivia Night!

January 21st, 2021



## Question 1:

What volunteer event occurred every Friday night since April 2020, and which volunteer led these events?

Answer:

SSC Friday Night Virtual Racing Series; Ros de Vries



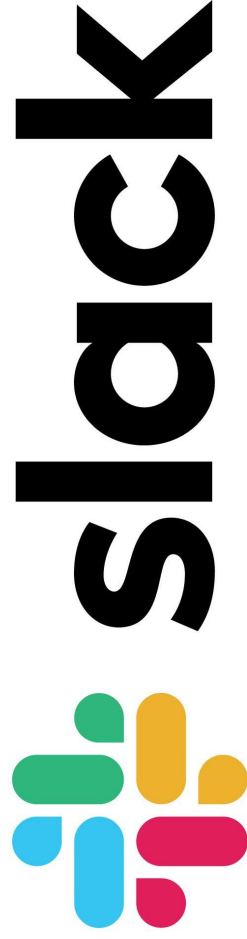
SAILING  
SCIENCE  
CENTER

## Question 2:

What communication platform has the SSC adopted as of December 2020?

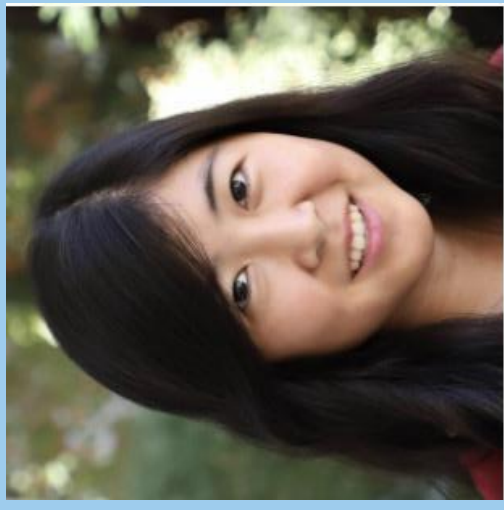
Answer:

Slack



Question 3:  
Who was the SSC's first paid employee?

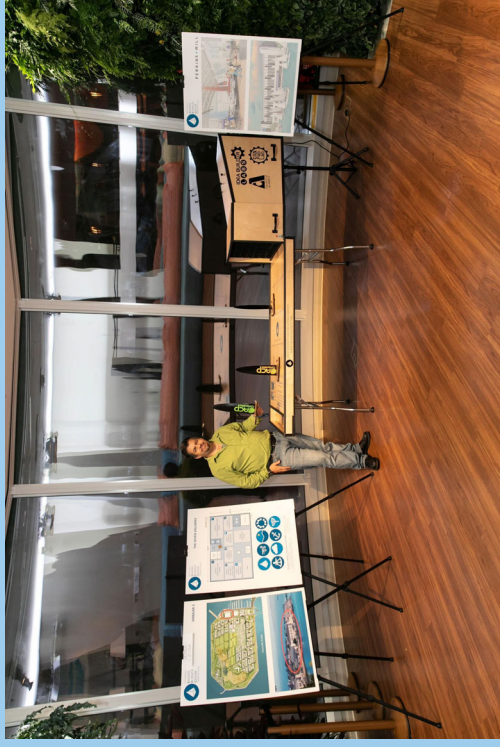
Answer:  
Mina Matsumoto





Question 4:  
Where did the SSC  
hold its first  
Fundraising Gala in  
December 2019?

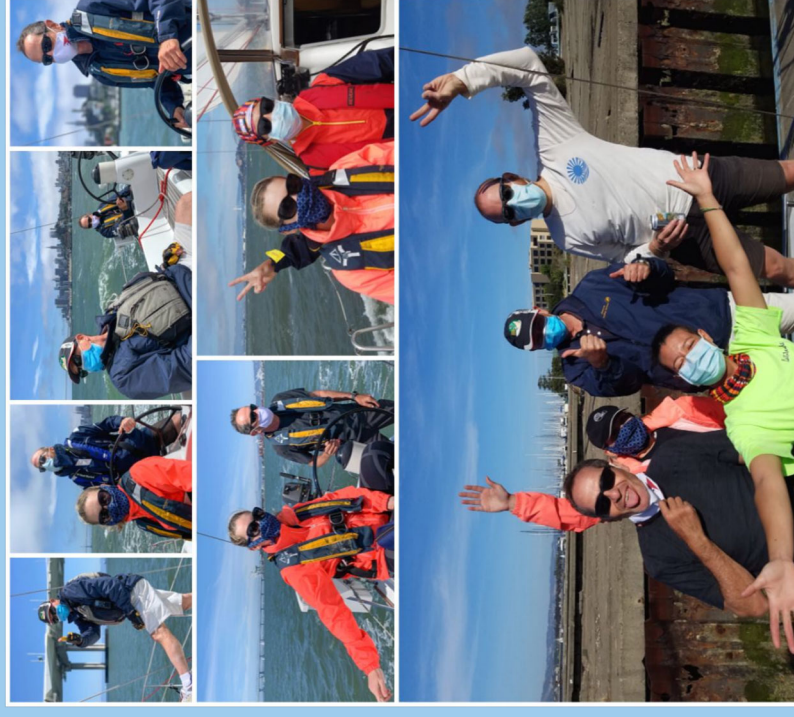
Answer:  
Salesforce Tower





**Question 5:**  
For the June 2020 Summer Sailstice,  
which volunteer offered his/her boat for  
the first in-person volunteer event  
since the Covid-19 lockdown that  
occurred in March?

**Answer:**  
Pip Ziman in his Jeanneau 42 sloop,  
Touché



## Question 6:

What was the name of the documentary shared and discussed during the October SSC volunteer event?



Answer:

Albatross



## Question 7:

Name the 5 SSC board members? (If you are board member, please let the Volunteer answer)

## Answer:

Jim Hancock, Jeff Owens, Mike Beller, Carolyn Davidson,  
Olivier Lauzeral







## Question 8:

How many galleries are there in the SSC vision?

Answer:

7

- 1) Airflow, Sails and Sailing
- 2) Waves, Hull Resistance and Stability
- 3) Human Factors and Mechanical Advantage
- 4) Navigation and Astronomy
- 5) Weather and Oceanography
- 6) Knots and Anchoring
- 7) Structures and Materials

Question 9 (Two Points):

What year did the SSC become an incorporated California non profit? What year did the SSC receive its 501(c)(3) tax-exempt status?

Answer:  
2018; 2019



SAILING  
SCIENCE  
CENTER

Question 10:  
List two of our three core values.

Answer:  
Integrity, Humility, Communication



SAILING  
SCIENCE  
CENTER

Question 11:  
What does TIDA stand for?

Answer:  
Treasure Island Development Authority

## Question 12:

On December 1st 2020, who from the SSC was appointed to the Treasure Island Citizen Advisory Board (CAB)?

Answer:

Jim Hancock





SAILING  
SCIENCE  
CENTER

### Question 13:

People don't care how much you know until  
\_\_\_\_\_.

Answer:

they know how much you care.



SAILING  
SCIENCE  
CENTER

## Question 14:

In John Maxwell's Five Levels of Leadership, based on his position, a king would be at what level?

## Answer:

Level 1, a Positional Leader



SAILING  
SCIENCE  
CENTER

## Question 15:

What decade was Treasure Island built?

Answer:

1930s

Specifically, it was built between 1936-1937 so it could be used for the 1939 Golden Gate International Exposition.





### Question 16:

From 1941-1997 what was Treasure Island used for?

### Answer:

Naval Base. In 1941, the Naval Station (NAVSTA) Treasure Island began as a US Navy “reception center”. Then in 1942, the Navy seized the island.



## Question 17:

### How did Clipper Cove get its name?

## Answer:

Named after the Pan American Airways Boeing 314, “California Clipper”.

In 1935, there was the first transoceanic commercial airliner flight, *China Clipper Flight*, which opened the Pacific to the first regular transoceanic commercial air service.



Question 18:  
What does TICD stand for?

Answer:

Treasure Island Community Development (The Master  
Developer for the Treasure Island Development Plan



SAILING  
SCIENCE  
CENTER

## Question 19:

What was Hanger 3 originally used for?

## Answer:

Was a hanger for the Pan American  
Clipper airplanes





SAILING  
SCIENCE  
CENTER

## Question 20:

What was building 1 originally used for?

Answer:

Air traffic control building



SAILING  
SCIENCE  
CENTER

## Question 21:

When you steer away from the wind do you generally sheet your sails in or out?

Answer:

Out



SAILING  
SCIENCE  
CENTER

## Question 22:

What is the fastest point of sail for a sloop under white sails?

Answer: Beam Reach



### Question 23:

When two sailboats on opposite tacks approach each other with a risk of collision, which boat has to give way, the port tack boat or the starboard tack boat?

Answer: Port



SAILING  
SCIENCE  
CENTER

## Question 24:

When bearing away do you move the jib leads forward or aft?

Answer: Forward



SAILING  
SCIENCE  
CENTER

## Question 25:

When would you have the right-of-way when overtaking another boat from directly behind?

Answer: Never



SAILING  
SCIENCE  
CENTER

## Question 26:

When a boat is running directly down wind on wing-on-wing with the mainsail on the port side and the jib on starboard side, is the boat on a port or a starboard tack?

Answer: Starboard



## Question 27:

What was the name of the boat that was used by the first all female crew in the Whitbread Round the World Race?



**Answer:**  
Maiden





SAILING  
SCIENCE  
CENTER

## Question 28:

A sailboat's hydrodynamic resistance comes from two factors: pressure resistance and frictional resistance. What is the number that relates to the scaling of frictional (viscous) resistance?

Answer:  
Reynolds Number



SAILING  
SCIENCE  
CENTER

### Question 29:

The principle stating that as a fluid's speed increases its pressure decreases is known as?

Answer:

Bernoulli's Principle



SAILING  
SCIENCE  
CENTER

### Question 30:

Winches, hydraulic backstay adjusters, block & tackle systems, and sweating a line are all examples of \_\_\_\_\_.

Answer:

Mechanical Advantage



### Question 31:

The effect that causes ocean currents to circulate clockwise in the Northern Hemisphere and counterclockwise in the Southern Hemisphere is known as \_\_\_\_\_.

A.

Answer:  
The Coriolis Effect



SAILING  
SCIENCE  
CENTER

### Question 32:

In celestial navigation, the point on the earth directly under a celestial body is known as its \_\_\_\_\_.

Answer:  
Geographic Position



SAILING  
SCIENCE  
CENTER

### Question 33:

The mathematical curve that an anchor chain follows as it droops from the bow of a boat to the seafloor is called a \_\_\_\_\_ curve.

Answer:  
Catenary

### Question 34:

The mechanical property of a material describing its stiffness as a ratio of stress over strain ( $\epsilon$ ) is known as its \_\_\_\_\_.

### Answer:

Modulus of Elasticity, or Young's Modulus. N.B. This should be rephrased to relate directly to boat structure.



## Puzzle (Bonus) Question:

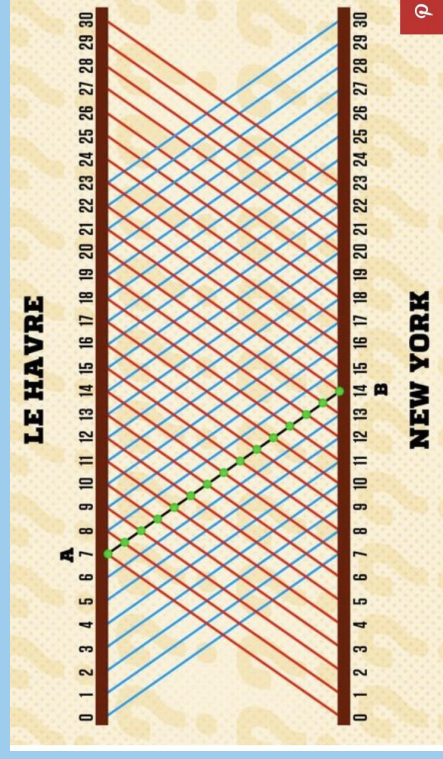
Every day at noon an ocean liner leaves France to sail for the United States, and (simultaneously) an ocean liner sails from United States to France. The crossing takes exactly seven days and seven nights in either direction. How many other ocean liners will an ocean liner leaving France today pass at sea before arriving in the United States?





## Answer:

The answer is 15 ocean liners. When one sets sail from France, there are 6 other ocean liners already at sea that set out from the US. In addition to these, 7 more ocean liners will leave the U.S. during the voyage, including the ship that leaves simultaneously from the US as our ship casts off from France. So a ship leaving France "today" will see 13 other ships in the ocean. In addition to these, it will cross paths with another ship as it casts off from France, and yet another as soon as it arrives in U.S. adding 2 more. An ocean liner leaving France on any given day will pass 15 other ocean liners on its way to the U.S.



The winning prize is.....  
a SSC Mug!

