

# MIOFPS FACTS

for

# SOIL AMENDMENTS



---

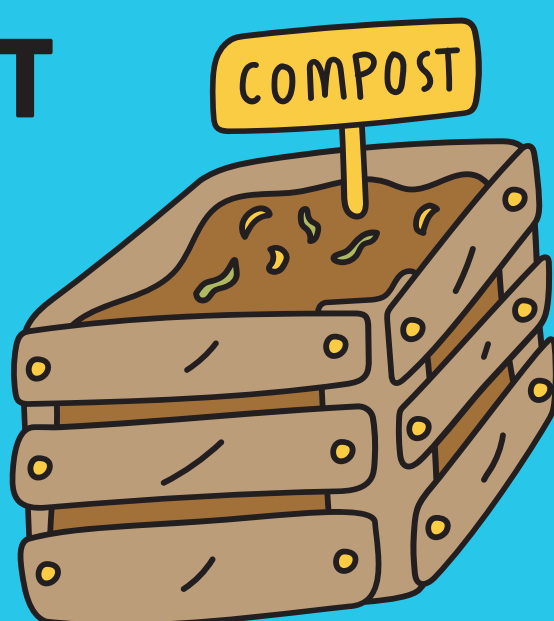
## MANURE



Raw Manure must not be applied in a manner that directly contacts the harvestable portion of the crop. Raw Manure can be applied to produce fields, following the National Organic Program guidelines.

## COMPOST

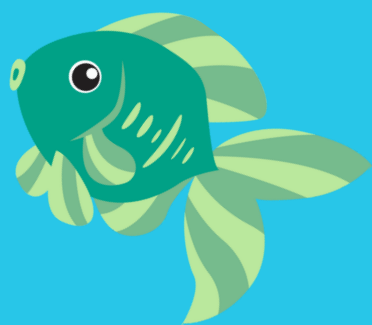
Compost must be treated in a scientifically valid process that reduces pathogens.



## COMPOST TEA

Compost must be treated. Any water used for compost tea, must be free of generic E. coli.

## FISH EMULSION, BLOOD MEAL, BONE MEAL, FEATHER MEAL



Must be processed to eliminate pathogens.

## BIOSOLIDS

Human Waste is **PROHIBITED** for use on produce crops, unless it meets the EPA regulation for biosolids.



**Michigan**  
On-Farm  
Produce Safety