



Hazardous Weather Briefing

**National Weather Service
Little Rock, Arkansas**

April 2, 2025 – 5:30 AM



**National Oceanic and
Atmospheric Administration**
U.S. Department of Commerce

**National Weather Service
Little Rock, AR**



Situational Overview

April 2, 2025
5:23 AM

- **WHAT** - Severe weather and heavy rainfall.
 - Very large hail, damaging wind gusts, and tornadoes will be possible on Wednesday with additional chances of severe weather Thursday through Saturday. .
 - Extremely heavy rainfall, more than 10 inches possible. Dangerous and potentially life threatening flash flooding and river flooding are expected.
- **WHEN** - Today through Saturday night.
 - Severe weather threat timeframes:
 - (1) Wednesday afternoon through Wednesday night (entire state)
 - (2) Thursday afternoon through Thursday night (all but far northwest Arkansas)
 - (3) Friday afternoon through Friday night (all but far northwest and far southeast Arkansas)
 - (4) Saturday afternoon through Saturday night (southeast half of Arkansas)
 - Heavy rainfall and resulting flash/river flooding threat Wednesday through Saturday.
- **Where** - Most of the state will be at risk for severe weather and heavy rainfall.

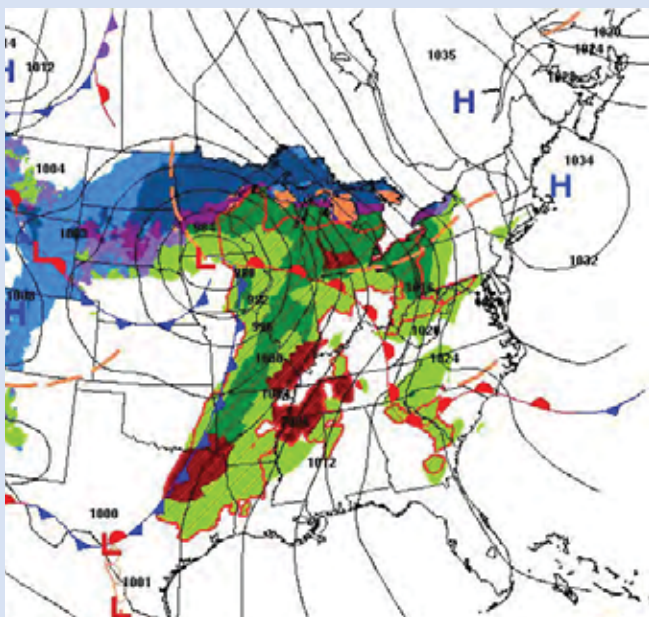




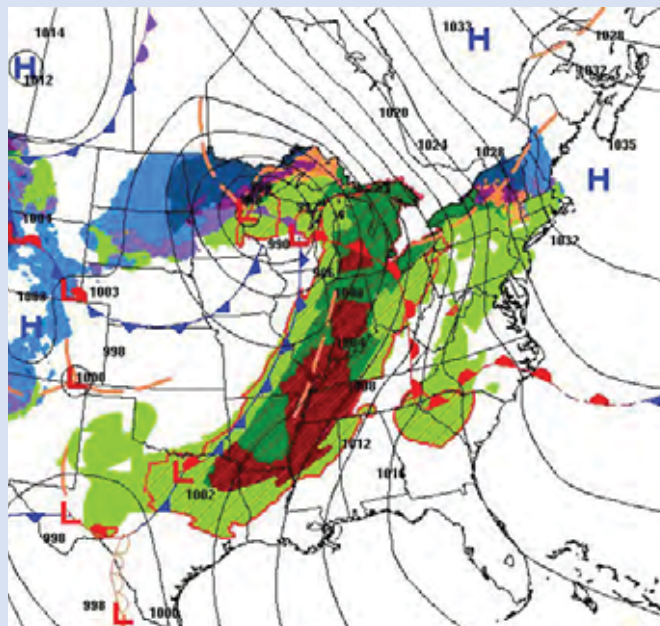
Severe Weather Setup

April 2, 2025
5:23 AM

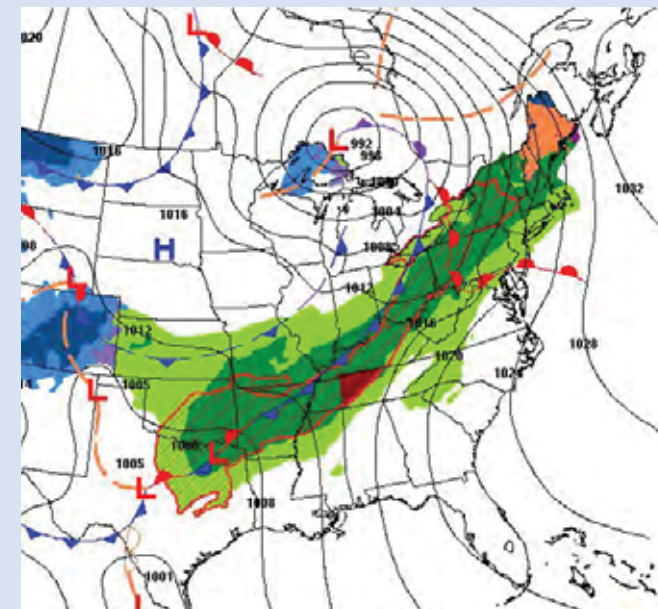
Wednesday Afternoon



Wednesday Evening



Thursday Morning



- A cold front and strong storm system will be approaching from the west Wednesday and stalling out somewhere over the state by Thursday morning. Plenty of moisture, wind shear, and instability will be in place with strong to severe thunderstorms likely.



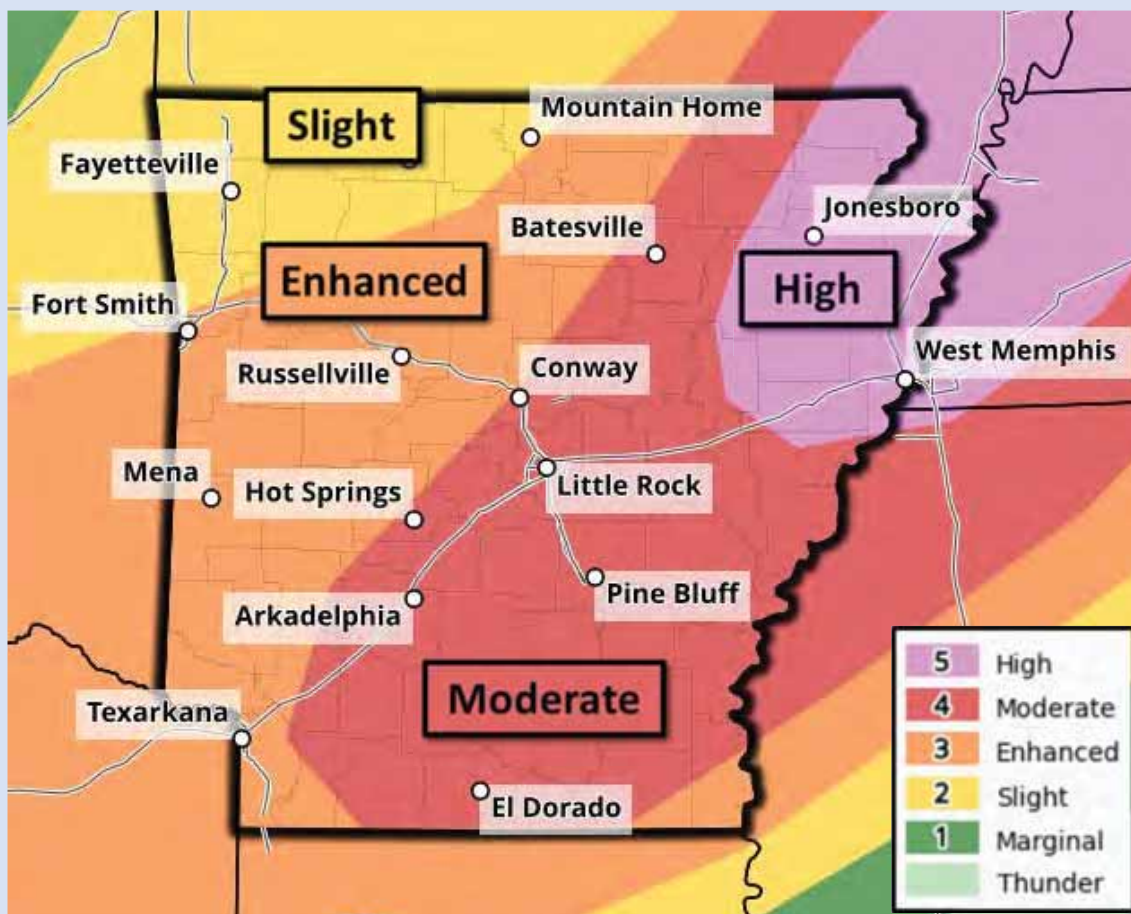
National Oceanic and
Atmospheric Administration
U.S. Department of Commerce

National Weather Service
Little Rock, AR



Severe Weather Outlook Today - Wednesday, April 2, 2025

April 2, 2025
5:23 AM



Maximum Hail Size

Up to Softball

Up to Baseball

Up to Golf ball

Up to Quarter

Maximum Wind Speed

80+ mph

60-80 mph

Up to 60 mph

Tornado Potential

High

Medium

Low

Very Low

A very dangerous day is setting up for most of the state with a severe weather outbreak likely.

All modes of severe weather are possible including very large hail, damaging winds, and tornadoes.

A moderate to high risk of severe weather is now in effect for roughly the eastern half of the state.



National Oceanic and
Atmospheric Administration
U.S. Department of Commerce

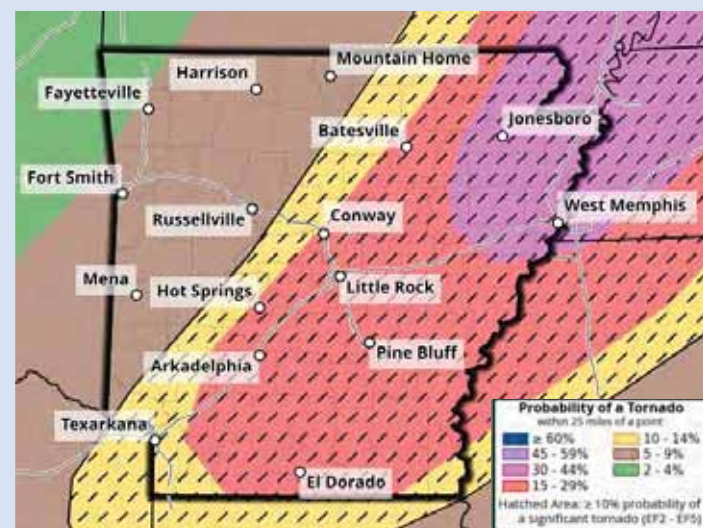
National Weather Service
Little Rock, AR



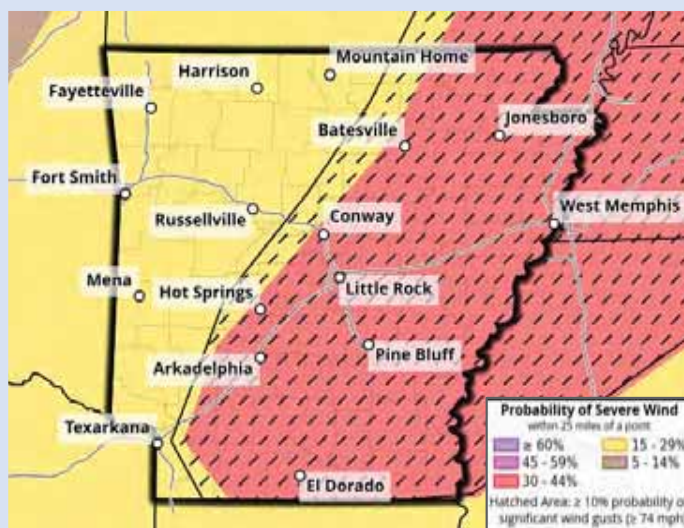
Categorical Hazards - Wednesday, April 2, 2025

April 2, 2025
5:23 AM

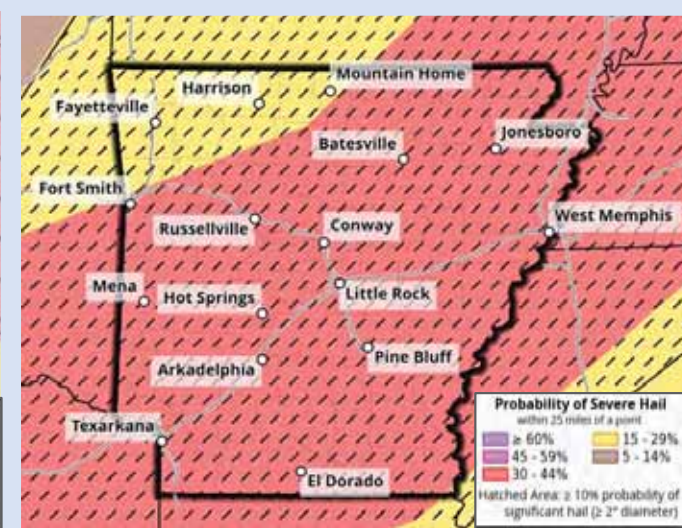
Tornadoes



Damaging Winds



Large Hail



- All severe weather hazards are possible today and tonight including strong and damaging winds, large hail, and long track tornadoes.
- Significant severe weather is possible over much of the state with a 10% or greater chance within the hatched regions that correspond to: 2 inch in diameter or greater hail, winds 75 mph or higher, and EF2 or stronger tornadoes.



National Oceanic and
Atmospheric Administration
U.S. Department of Commerce

National Weather Service
Little Rock, AR



Simulated Radar Timing/Severe Threat - Wednesday, April 2

April 2, 2025
5:23 AM

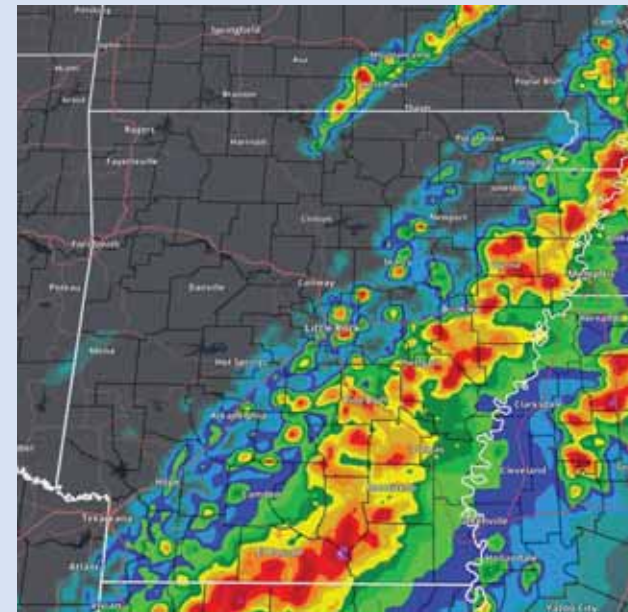
1 PM CDT Wednesday



4 PM CDT Wednesday



7 PM CDT Wednesday



- Showers and thunderstorms will be approaching western Arkansas this morning but will likely weaken. This will be followed by a new round of showers and thunderstorms developing by early afternoon and moving across the state. All modes of severe weather will be possible.



National Oceanic and
Atmospheric Administration
U.S. Department of Commerce

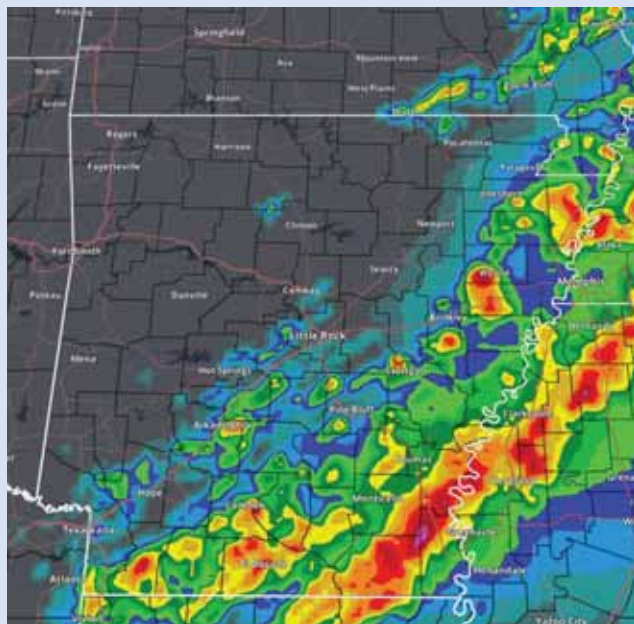
National Weather Service
Little Rock, AR



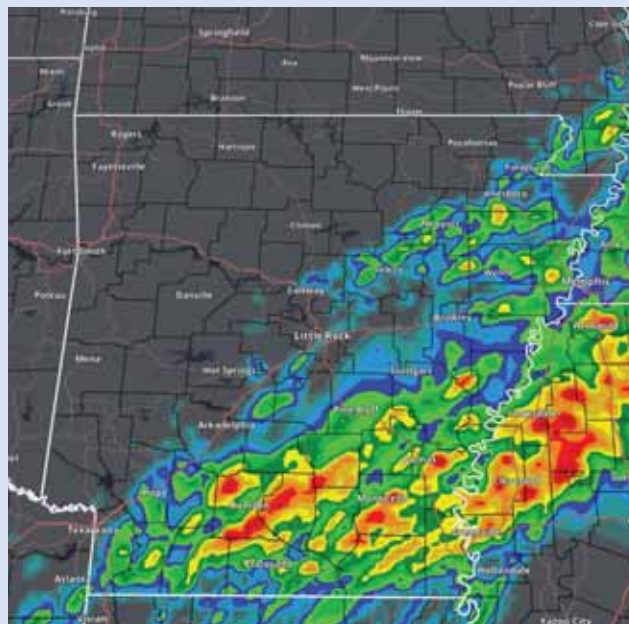
Simulated Radar Timing/Severe Threat - Wednesday, April 2

April 2, 2025
5:23 AM

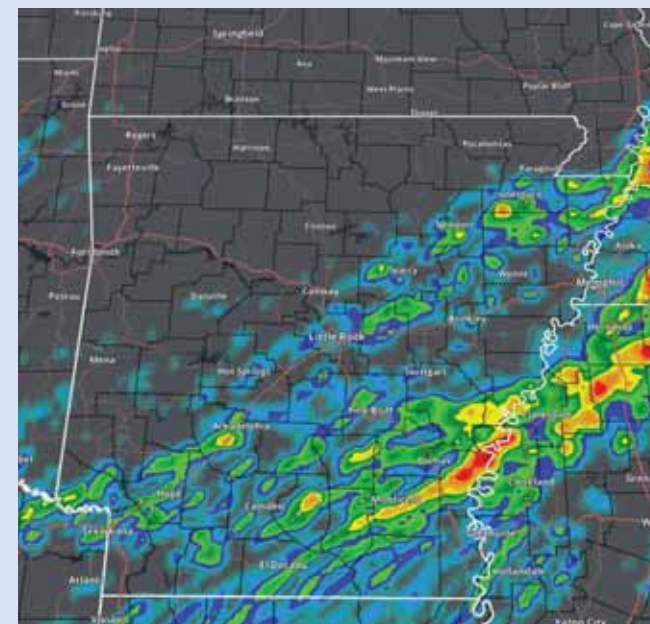
10 PM CDT Wednesday



1 AM CDT Thursday



4 AM CDT Thursday



- The line of thunderstorms will slowly push southeast through the evening before starting to weaken. The severe weather threat will slowly transition to a heavy rain event as the front stalls and several weather systems bring heavy rain as they travel along the front.



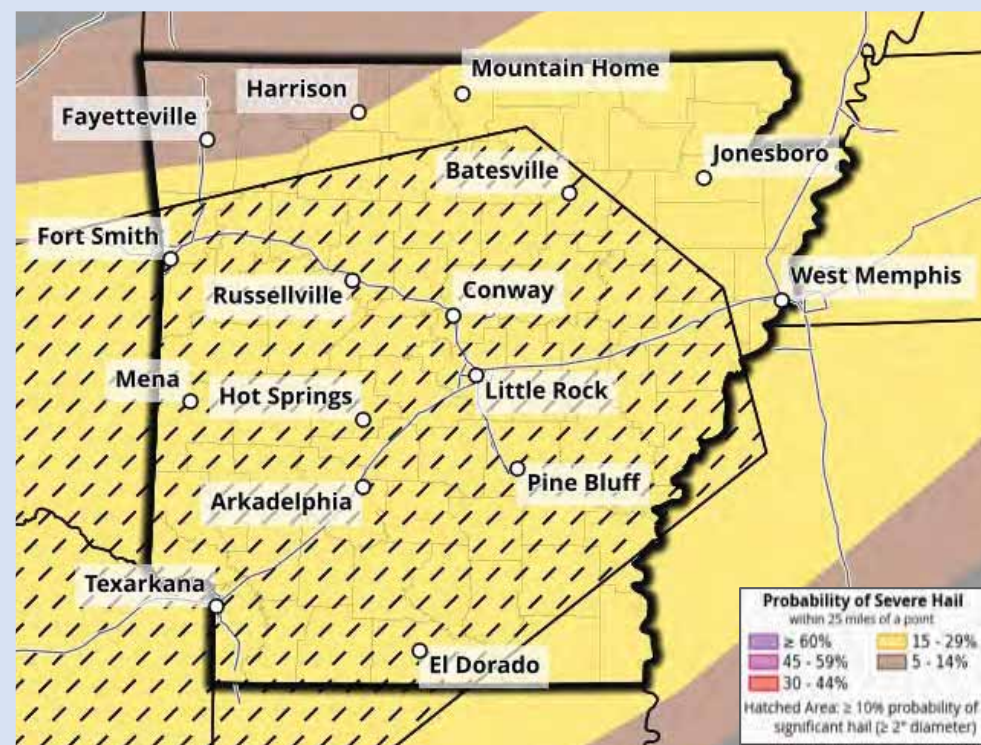
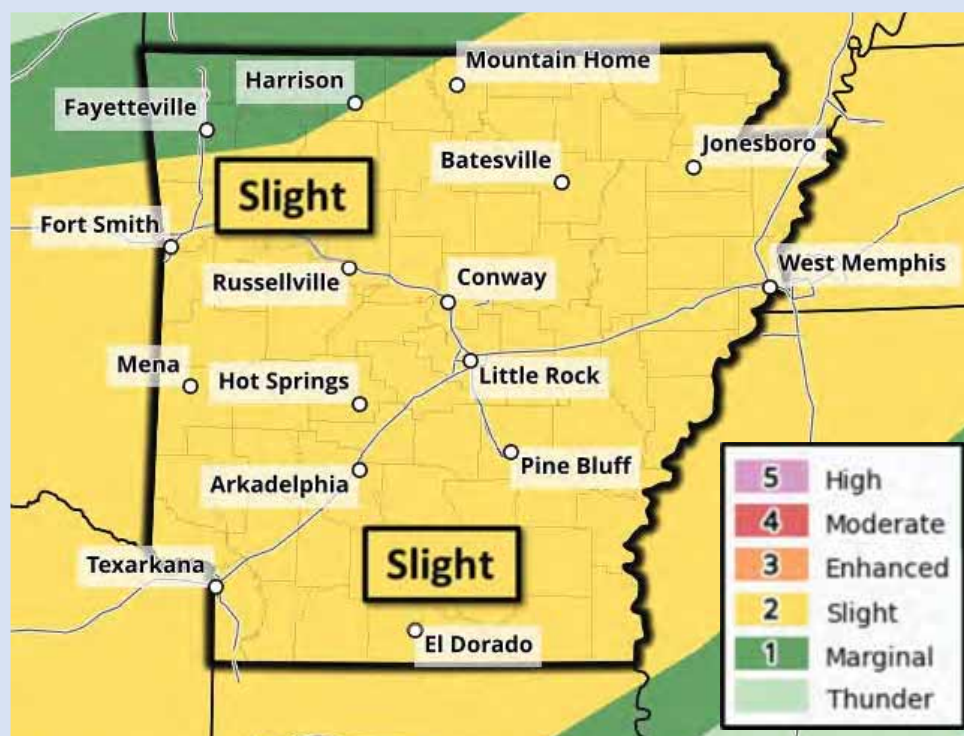
National Oceanic and
Atmospheric Administration
U.S. Department of Commerce

National Weather Service
Little Rock, AR



Severe Weather Outlook - Thursday, April 3, 2025

April 2, 2025
5:23 AM



- Severe weather remains possible on Thursday with a slight chance for the majority of the state. While strong gusty winds and maybe a tornado are possible, the primary concern this time will be hail. The hatched area shows where there is a 10% chance or greater of hail larger than 2 inches in diameter.



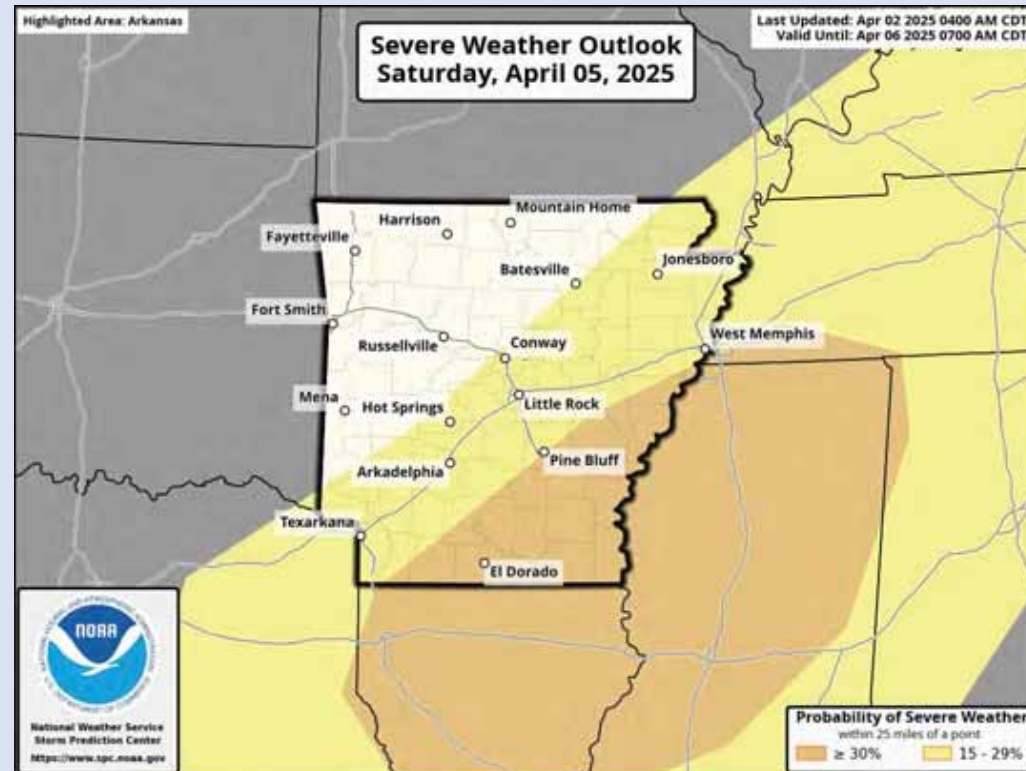
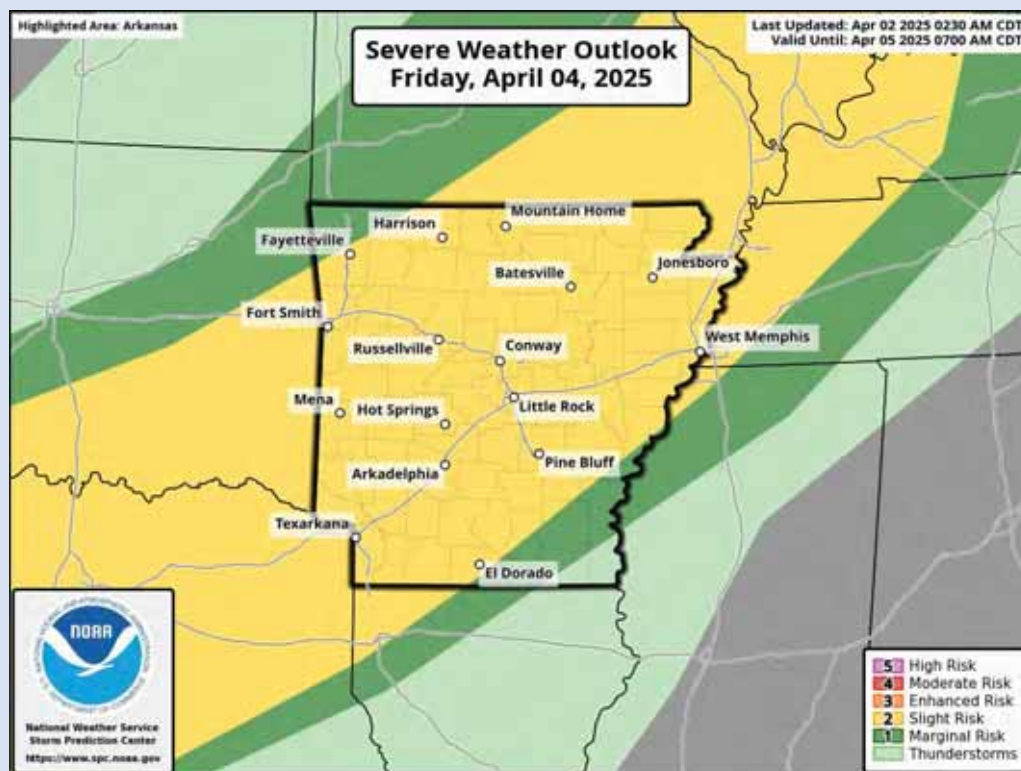
National Oceanic and
Atmospheric Administration
U.S. Department of Commerce

National Weather Service
Little Rock, AR



Severe Weather Outlooks- Friday and Saturday

April 2, 2025
5:23 AM



- Severe weather chances continue on Friday and Saturday as the very active pattern continues. A new 30% or greater area has been added to southeast Arkansas for Saturday.



National Oceanic and
Atmospheric Administration
U.S. Department of Commerce

National Weather Service
Little Rock, AR



Flooding Set Up

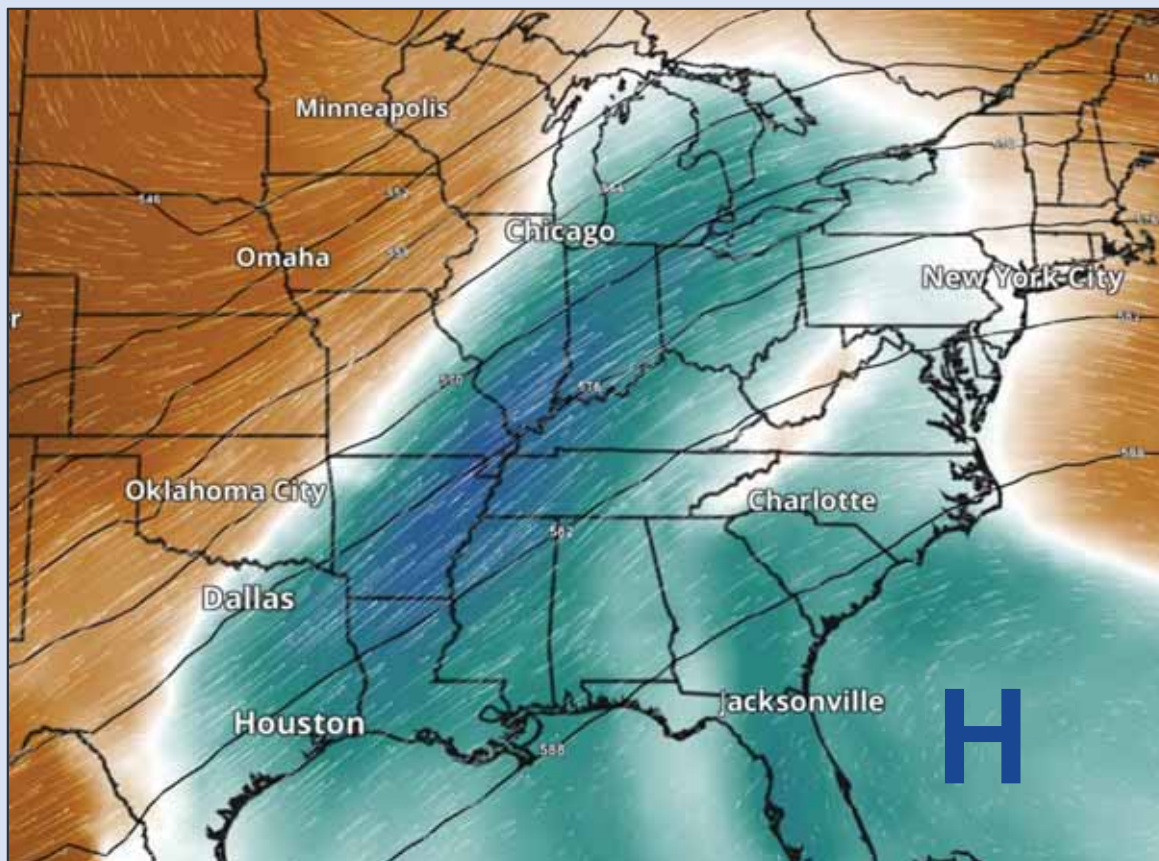
April 2, 2025
5:23 AM

Upper level high pressure will build over the western Atlantic and remain there through the weekend.

Pronounced southwest flow aloft and southerly surface flow will pull in copious amounts of gulf moisture.

A front will become parallel with the upper flow and stall over the state.

Waves of low pressure will move along the boundary bringing rounds of heavy rain to the state.



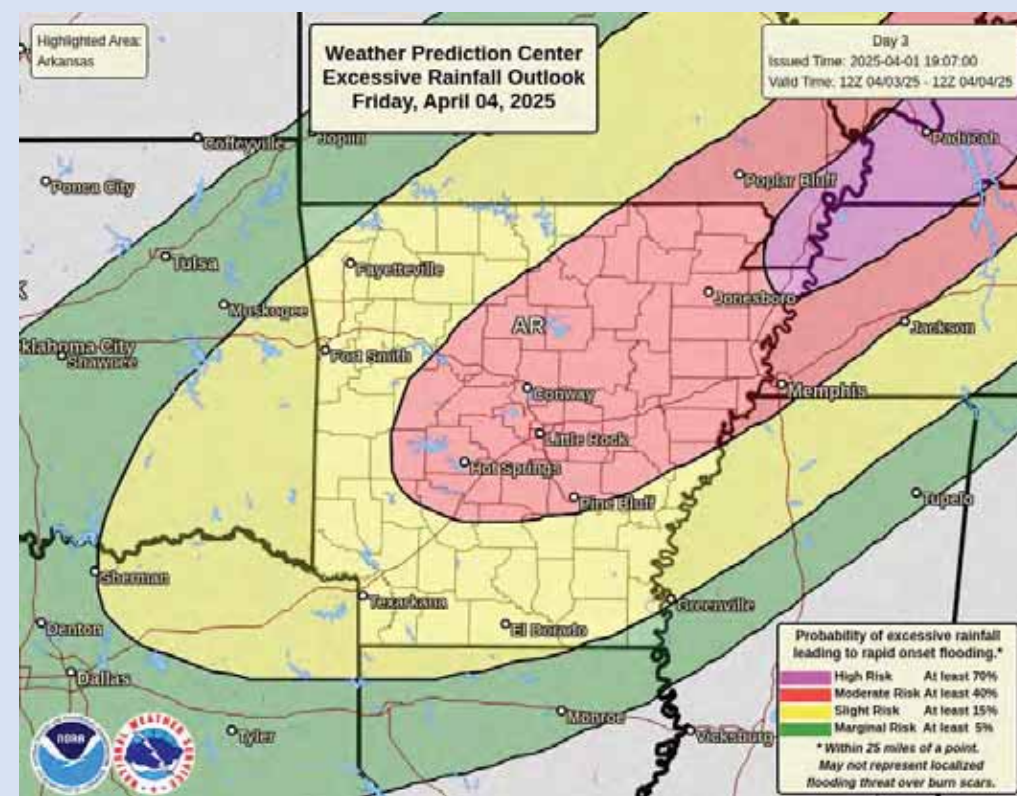
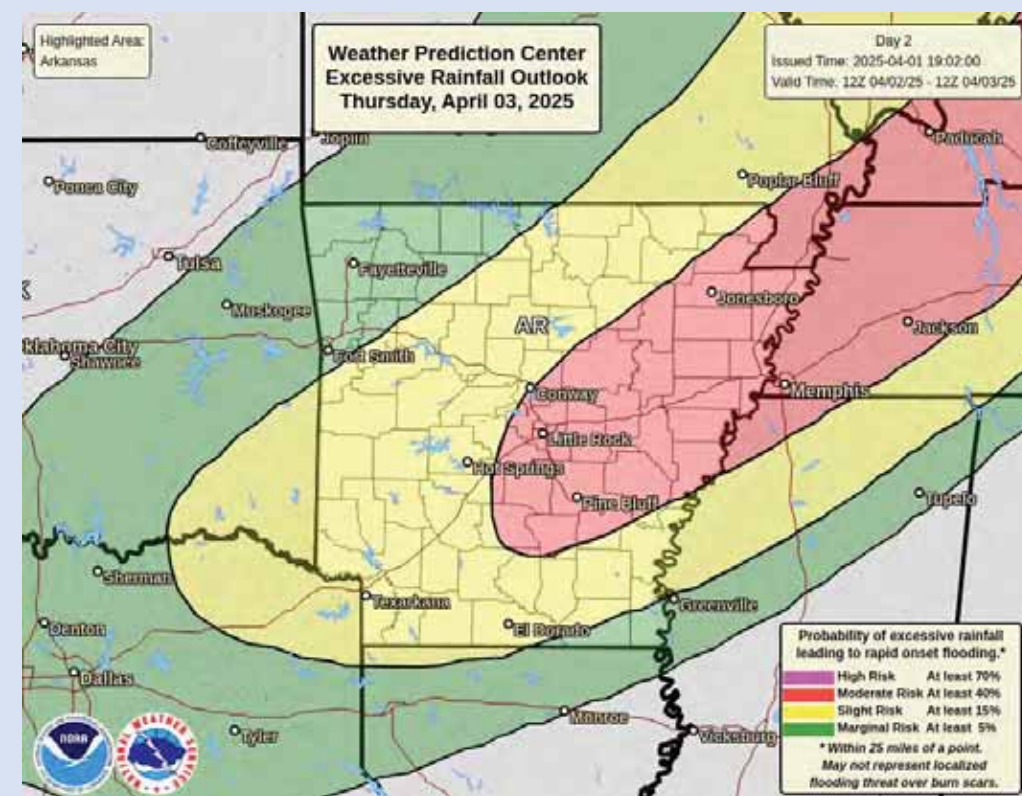
National Oceanic and
Atmospheric Administration
U.S. Department of Commerce

National Weather Service
Little Rock, AR



Day 2 and 3 Excessive Rainfall Outlook (4/3 and 4/4)

April 2, 2025
5:23 AM



- A Moderate Risk (level 3/4) for excessive rainfall has been issued for Thursday and Friday.
- A High Risk (level 4/4) for excessive rainfall has been issued for Friday across far northeast Arkansas.

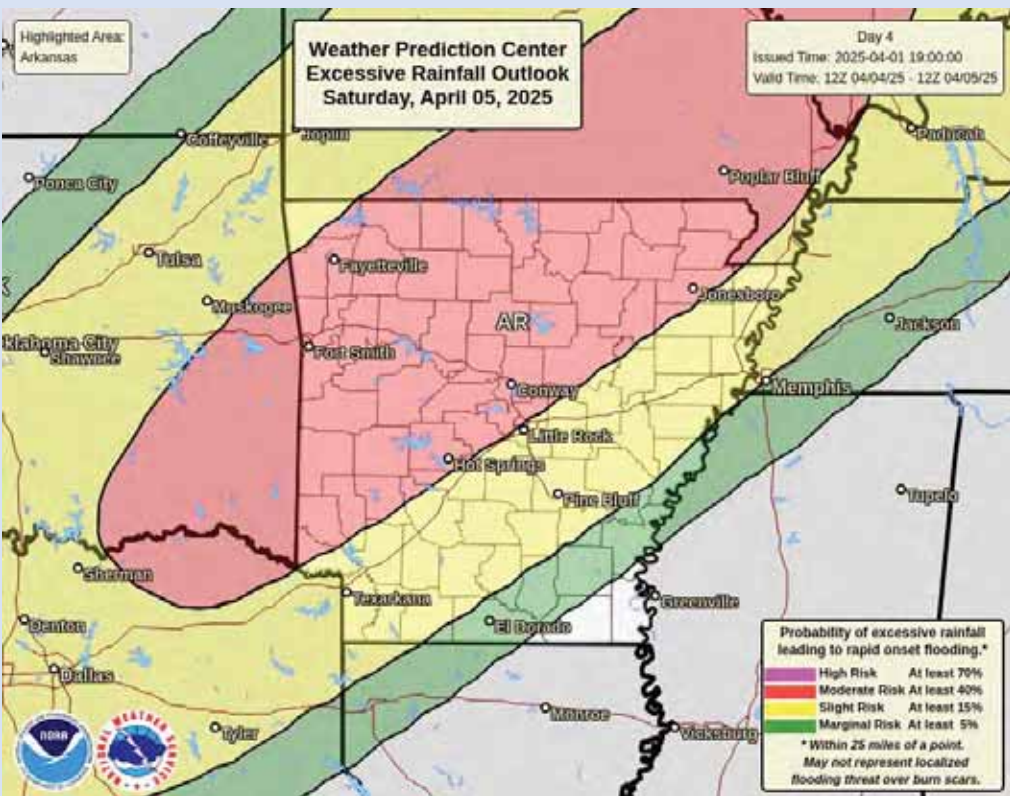


National Oceanic and
Atmospheric Administration
U.S. Department of Commerce

National Weather Service
Little Rock, AR

April 2, 2025
5:23 AM

Day 4 and 5 Excessive Rainfall Outlook (4/5 and 4/6)



- A Moderate Risk (level 3/4) for excessive rainfall will continue for both Saturday and Sunday.
- Multiple waves of rain will occur Wednesday through at least Saturday, increasing the flooding threat.



National Oceanic and
Atmospheric Administration
U.S. Department of Commerce

National Weather Service
Little Rock, AR

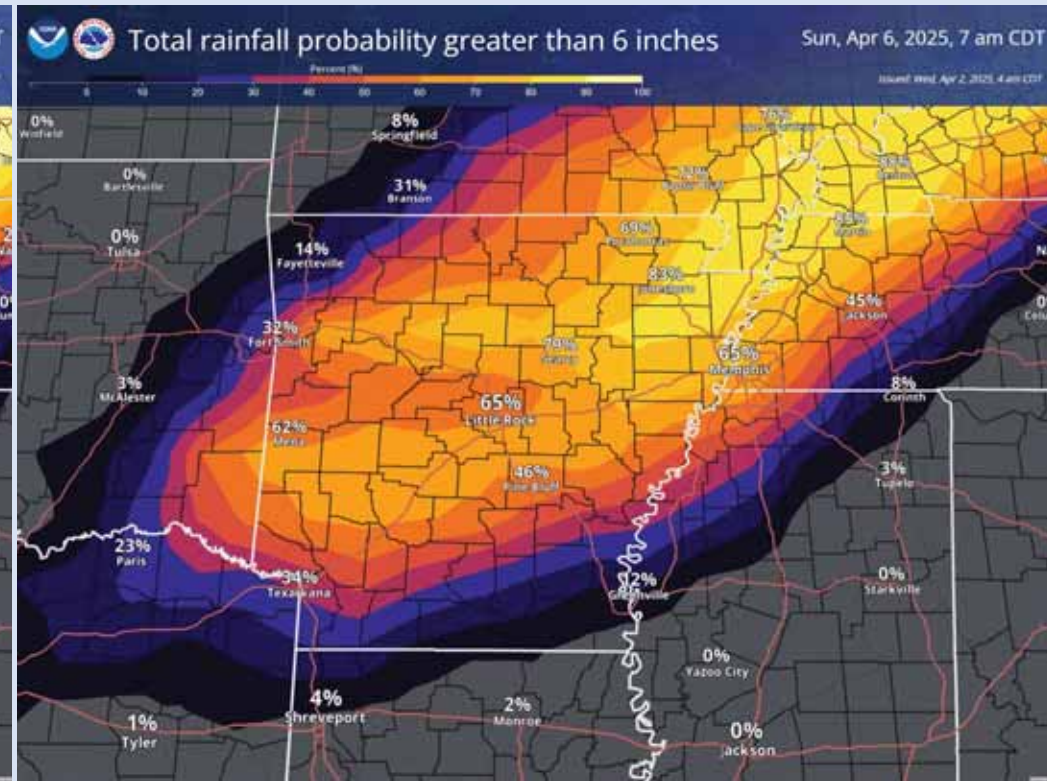
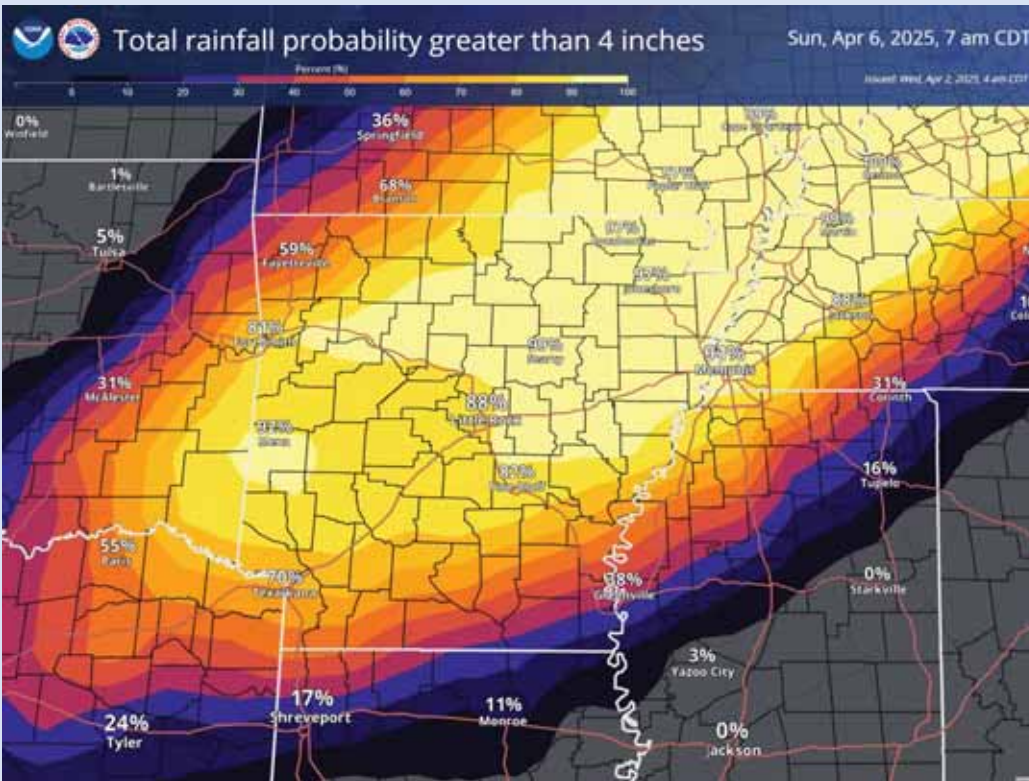


Probability of Exceeding Rainfall (4" & 6") Wed - Sun Morning

April 2, 2025
5:23 AM

Probability Exceeding > 4"

Probability Exceeding > 6"



National Oceanic and
Atmospheric Administration
U.S. Department of Commerce

National Weather Service
Little Rock, AR

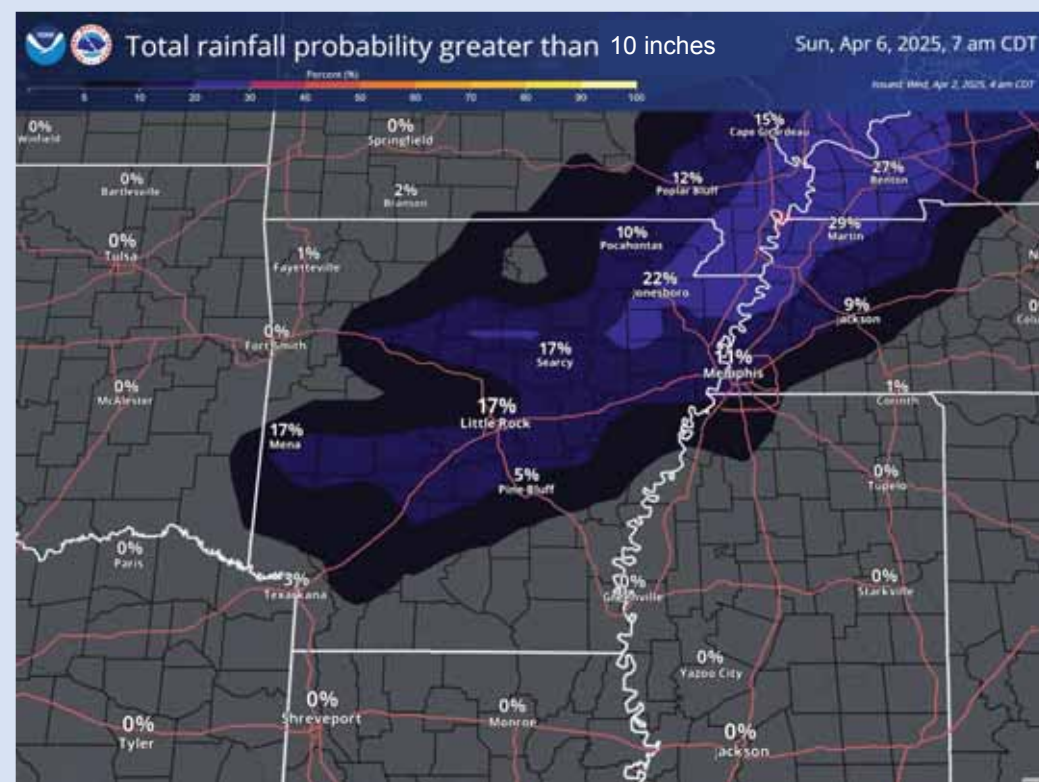
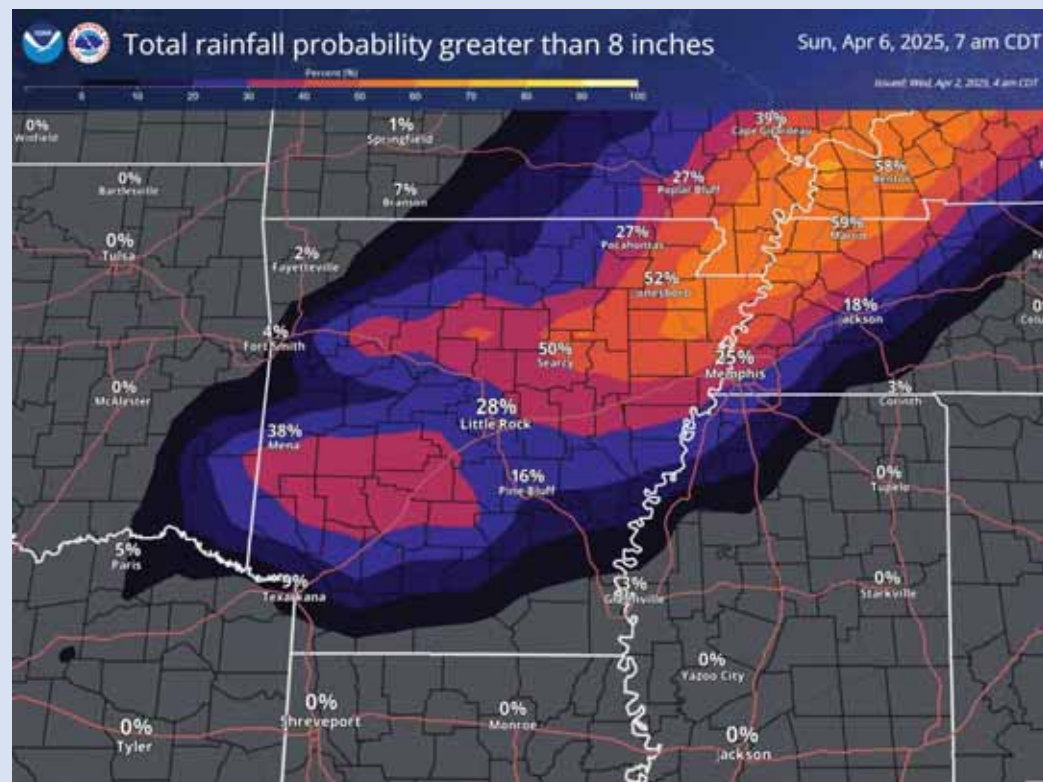


Probability of Exceeding Rainfall (8" & 10") Wed - Sun Morning

April 2, 2025
5:23 AM

Probability Exceeding > 8"

Probability Exceeding > 10"



National Oceanic and
Atmospheric Administration
U.S. Department of Commerce

National Weather Service
Little Rock, AR



Rainfall Forecast and Flood Watch

April 2, 2025
5:23 AM

Flood Watch



Forecast Rainfall Amounts



- Extremely heavy rainfall is expected statewide with at least 4-6 inches in the forecast at all locations.
- The heaviest amounts are likely over northeast Arkansas, more than 10 inches of rain are in the forecast.
- A ***PARTICULARLY DANGEROUS SITUATION*** flood watch is in effect for much of the state.



National Oceanic and
Atmospheric Administration
U.S. Department of Commerce

National Weather Service
Little Rock, AR

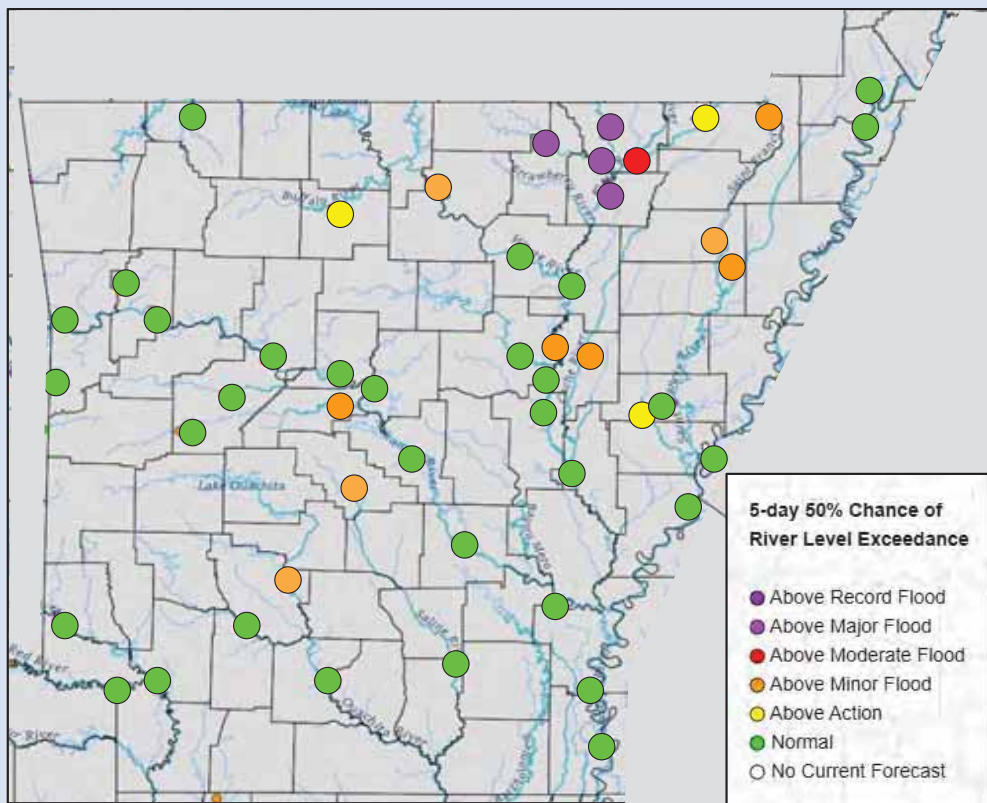


HEFS Ensemble River Forecasts - 5 Days of Rainfall

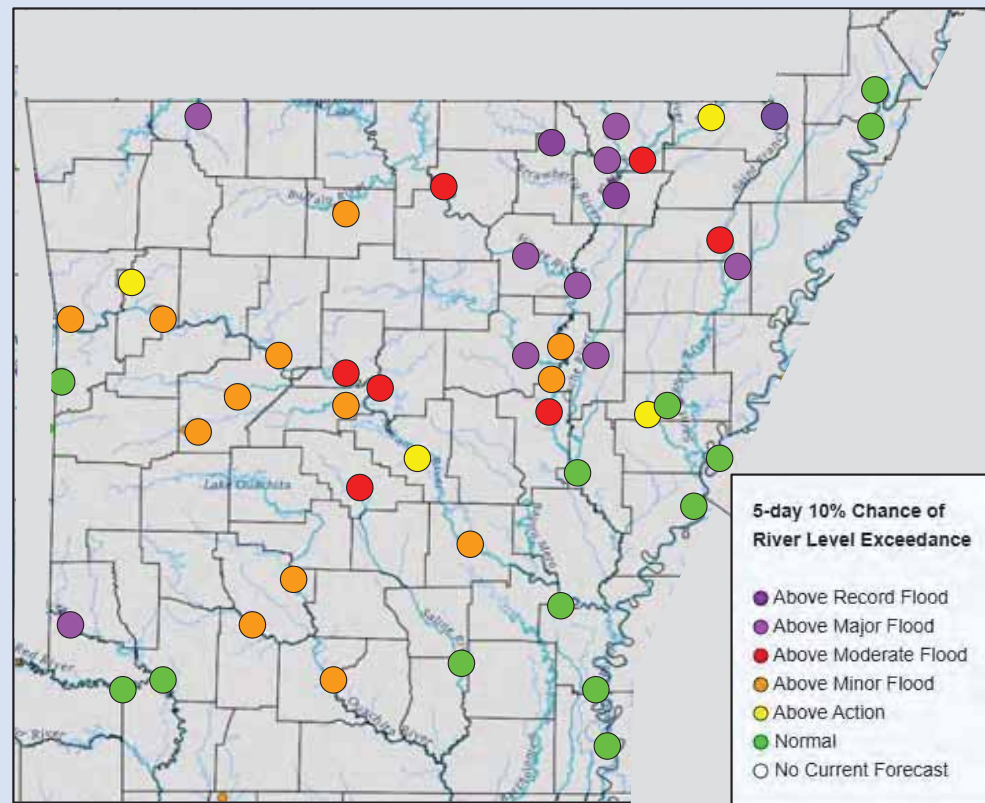
April 2, 2025
5:23 AM

Probabilistic Forecast Data for River Flooding

Lower End Flooding Forecast



Higher End Flooding Forecast



National Oceanic and
Atmospheric Administration
U.S. Department of Commerce

National Weather Service
Little Rock, AR

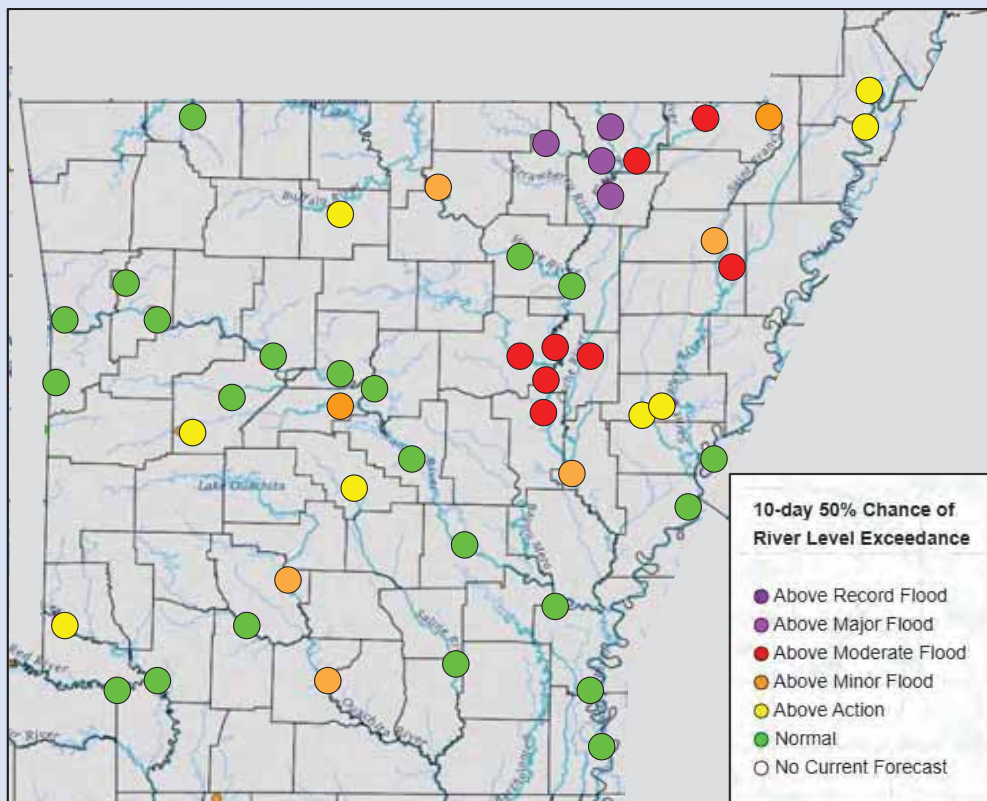


HEFS Ensemble River Forecasts - 10 Days of Rainfall

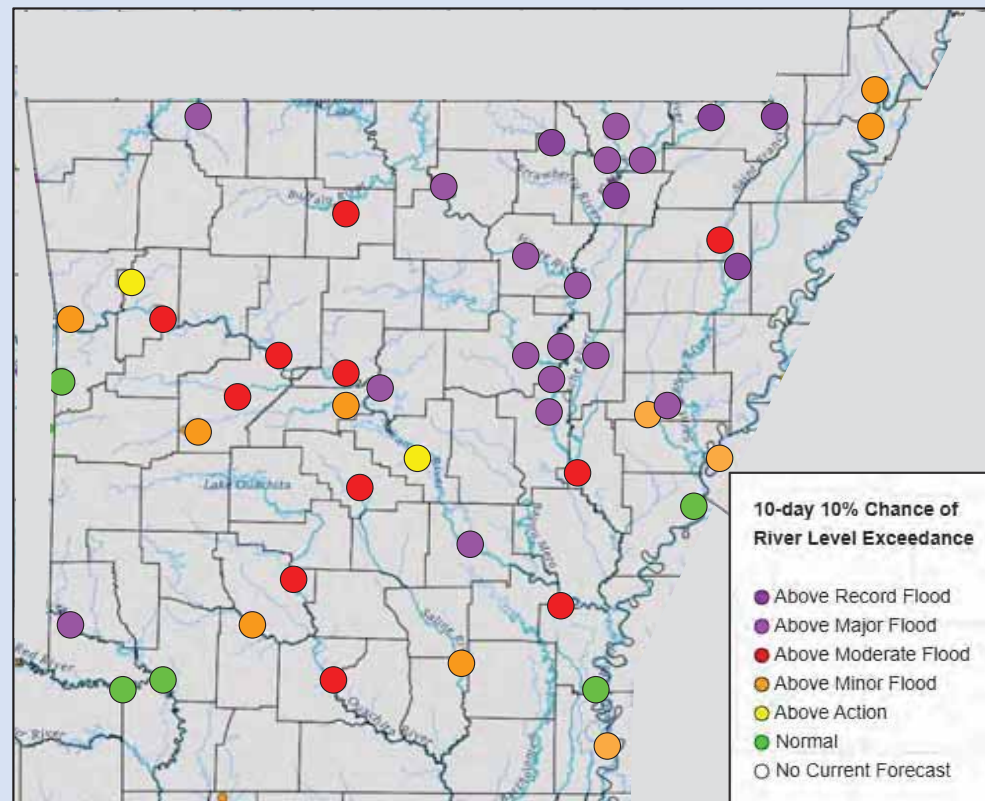
April 2, 2025
5:23 AM

Probabilistic Forecast Data for River Flooding

Lower End Flooding Forecast



Higher End Flooding Forecast



National Oceanic and
Atmospheric Administration
U.S. Department of Commerce

National Weather Service
Little Rock, AR



Severe Weather Category Information

April 2, 2025
5:23 AM

Parts of Northeast Arkansas are now under a High Risk of severe weather.

Understanding Severe Thunderstorm Outlook Categories						
LEVEL	CATEGORY	DETAILS	SUMMARY	How many severe storms are possible?	How bad could the worst storms be?	DEFINITIONS
	General Thunderstorm	Although severe weather is not expected, <i>all</i> thunderstorms can produce deadly lightning, gusty winds, and small hail.	No severe thunderstorms expected		Similar to storms your area experiences many times per year	Severe Storm Any storm that contains at least one of the following: Wind gusts of at least 58 mph Hail at least one inch in diameter Tornado
1	Marginal (MRGL)	Some storms could be capable of damaging winds and severe hail. Localized tornado threat could develop.	Isolated severe storms possible		Similar to storms your area may experience several times per year	
2	Slight (SLGT)	Increased confidence that some storms will contain damaging winds, severe hail, and/or tornado potential. <i>A few severe storms could be significant</i>	Isolated to scattered severe storms expected		Similar to storms your area may experience a few times per year	
3	Enhanced (ENH)	High confidence that several storms will contain damaging winds, severe hail, and/or tornadoes. <i>Several severe storms could be significant</i>	Scattered to numerous severe storms expected		Similar to intense storms your area may only experience once or twice per year	Significant Severe Any of the following hazards: Wind gusts of at least 75 mph Hail at least two inches in diameter Tornado of at least EF-2 rating
4	Moderate (MDT)	High confidence that many storms will contain damaging winds, severe hail, and/or tornadoes. <i>Several severe storms likely to be significant</i>	Scattered to numerous severe storms expected		Similar to intense storms your area may only experience once per year or less	
5	High (HIGH)	High confidence that an outbreak of storms will contain tornadoes, damaging winds, and/or severe hail. <i>Tornado outbreak and/or widespread damaging winds</i>	Numerous severe storms expected		Very intense storms your area may only experience once or twice in a lifetime	



Severe Weather Planning and Preparedness

April 2, 2025
5:23 AM

- Widespread severe weather is likely across Arkansas today. **NOW** is the time to review your severe weather action plans.

STORM PLANNING TIMELINE

A few days out	The day before	The day of
<p><i>If the forecast calls for severe weather in a few days, start preparing now.</i></p> <ul style="list-style-type: none"> Make sure that you have emergency supplies Know your safe places Have a family communication plan	<p><i>The day before, forecast accuracy continues to improve.</i></p> <ul style="list-style-type: none"> Adjust plans Make sure your phone can receive WEAs Ensure your shelter is clean and accessible	<p><i>Remain vigilant and aware of any active Watches. A Warning may be issued at a moment's notice!</i></p> <ul style="list-style-type: none"> Remind your family of the communication plan Know how to evacuate and/or get to safety from wherever you are When a Warning is issued, you may only have seconds to take action!

weather.gov



National Oceanic and
Atmospheric Administration
U.S. Department of Commerce

National Weather Service
Little Rock, AR



Severe Weather Safety Information

April 2, 2025
5:23 AM

Know Where To Go

Top floor rooms DO NOT protect you from a tornado- these will be an absolute last resort if the water is forcing you to shelter this high.

Exterior rooms and rooms with windows DO NOT protect you from tornadoes.

NO PLACE OUTSIDE is safe from a tornado. Particularly, when flooding is ongoing and ditches are full of water and unable to be used to attempt to shelter.

When a **Tornado Warning & a Flash Flood Warning** are ongoing **at the same time** for your location

It's best to seek shelter in an **interior room with no windows on the lowest floor safely possible**. Ideally, with quick access to move to higher ground if needed to flee rising water.



National Oceanic and
Atmospheric Administration
U.S. Department of Commerce

National Weather Service
Little Rock, AR



Flood Safety Tips

April 2, 2025
5:23 AM

Flash flooding can escalate quickly.

Heavy rain can lead to sudden flash floods, whether you're on the road or at a campground. Will you be ready?



Set up a way to get weather warnings on your phone



When alerted to a flash flood, get to higher ground immediately



Never enter flood waters in a vehicle or on foot



[weather.gov](https://www.weather.gov)



National Oceanic and
Atmospheric Administration
U.S. Department of Commerce

National Weather Service
Little Rock, AR



Key Takeaways

April 2, 2025
5:23 AM

Extremely dangerous conditions are expected for most of Arkansas Wednesday and Wednesday night!

- Severe weather will be possible somewhere across Arkansas Wednesday through Saturday with the most volatile and dangerous time being Wednesday into Wednesday night.
- A high risk of severe weather has been introduced for Wednesday/Wednesday night. Very large hail, damaging winds, and strong tornadoes are all expected to occur somewhere across the Moderate Risk/High areas. While some areas across the state may be seriously affected by severe weather this week, the heavy rainfall threat is equally if not more significant!
- The amount of rain in the forecast is rarely seen across Arkansas, with portions of the state on average not seeing amounts like this in nearly 50 to 100 years.
- If rainfall amounts of greater than 10 inches are seen across large portions of the state, catastrophic flash flooding and major river flooding can be expected.



National Oceanic and
Atmospheric Administration
U.S. Department of Commerce

National Weather Service
Little Rock, AR



April 2, 2025
5:23 AM

For the latest information



Web: <http://weather.gov/LZK>



Phone: (501) 834-0308



E-mail: sr-lzk.forecasters@noaa.gov or
nws.littlerock@noaa.gov



Facebook: NWSLittleRock



X: @NWSLittleRock



YouTube: NWSLittleRock



National Oceanic and
Atmospheric Administration
U.S. Department of Commerce

**National Weather Service
Little Rock, AR**