



# DEB'S DISTRICT UPDATE

Deb Jung • District Four

July-August 2022

## *Greetings*

Is it still July? The heat certainly says it is and I hope everyone is keeping cool.

While Council business has slowed during campaign season, constituent services continue apace. My office receives requests for help for all kinds of matters, including navigating County and State agencies, solving stormwater problems, reporting loud cars racing through neighborhoods, and addressing rental increases. Some of these issues are easy to fix, while others take time and the experienced leadership of my District 4 team: China Williams, Special Assistant, and Matt Blum, District Aide. I am fortunate to have two dedicated and capable staff members and often hear from constituents how helpful my office has been to them.

China ran for a County Council seat in 2018 so she is not only fully capable of navigating government channels to assist you, she also knows the bigger issues that affect Howard County. She is a professional writer and now you know the secret to my well-written newsletter. She is the mom of two kids in Howard County public schools and understands those concerns too. Matt Blum is a recent University of Maryland graduate and majored in government and politics, a perfect fit for this office. He grew up in Howard County and attended Howard High School. In his spare time, he coaches soccer skills to children and likes to travel.

Thank you China and Matt for all of your assistance.

*Deb*

Subscribe to my newsletter [here](#).

# Council Updates

## JULY LEGISLATION

Legislation introduced in July will be voted on July 27 during a legislative wrap-up session. No legislation will be introduced in August due to the County Council's recess.

## MY LEGISLATION

**CB50 Board of Appeals Training.** Our County is designed to benefit from the experience and expertise of its residents through various boards and advisory groups. The citizen boards associated with the Hearing Authority go beyond input into administrative judicial process that requires a high level of knowledge about local zoning regulations, the rules of procedure, and quasi-judicial proceedings. I sponsored this bill to help educate new Board of Appeals members gain a mastery of these fundamentals through online coursework made available by the Department of Planning and Zoning and the State.

## COUNTY EXECUTIVE'S LEGISLATION

### **CB48 LGBTQIA+ Commission & CB49**

### **La Alianza Latina Commission Establishment**

These two new commissions will work to advance the values of diversity and civility within the County agencies, non-profits and interested community groups.

**CR112 Howard County Land Preservation, Parks and Recreation Plan 2022.** This is the

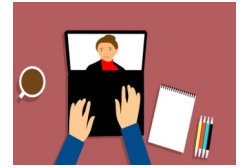
## UPCOMING COUNCIL MEETINGS

July 18, 7pm — Legislative Public Hearing

July 20, 1pm — Legislative Work Session

July 27, 10 am — Wrap-up Legislative Session

August— Council Recess



annual submission to the State for land preservation and recreation assessment and plans. Updated goals focus on promoting programs and spaces accessible to all, increasing cultural awareness, focusing on health and wellness, improving habitats and stream health, connecting agricultural heritage into recreational programming, among others. Since the last update in 2017, the County has added 37.2 acres of park land.

## ZONING BOARD UPDATES

The Zoning Board voted at its last meeting to hire a consultant to provide recommendations for its current revision of the Rules of Procedure. A request for quote is being drafted. Click [here](#) for more.

Click [here](#) for current legislation.

# Council Updates

## JUNE-JULY LEGISLATION

The following legislation was introduced on June 6 and voted on July 5.

### COUNTY EXECUTIVE'S LEGISLATION

**CB43 & CB44 Agricultural Preservation Purchase.** Development easement purchase at 6940 & 6950 Haviland Mill Road, Clarksville.  
*Passed as Amended*

**CB45 Building Excise Tax for Parking Garages** Square footage assessments apply to all structures, including parking facilities. *Passed*

**CB46 Floodplain Construction Requirements** Electrical equipment and HVAC systems must be elevated at least two feet above the 100-year flood level. *Passed*

**CR99 Housing Unit Allocation Chart** Annual adoption of the total number of units that can be built for FY2023. *Passed*

**CR100 School Capacity Chart** Because the Northern school region is closed to development in the 2025 test year, the County Council, County Executive, and the Board of Education are required to meet to discuss strategies. This meeting is scheduled for July 11.  
*Passed*

**CR101 State Agricultural Preservation Sale** Owner's application to sell to the State an easement for 2825 Florence Road. *Passed*

### COUNCILMEMBERS' LEGISLATION

**CR102 Abortion Care Clinical Training Program** Requests Governor Hogan to release funds for this program. Liz Walsh, co-sponsored by Deb Jung, & Christiana Rigby.  
*Passed*

**The County Council will be  
in Recess during the  
month of August!**

The Office Staff is here to assist you.  
410-313-2001  
councilmail@howardcountymd.gov

# Council Updates

## **SCHOOL SITE RESERVATIONS: WORKSESSION DISCUSSION**

At the June 27 Worksession, Councilmembers discussed CR100 School Capacity Chart, which identifies school zones' capacity for increased enrollment from new developments. I expressed my concerns repeatedly about the timing of the chart's approval and the accuracy of enrollment numbers. I'm equally concerned about the coordination among the School Capacity Chart, HCPSS's Capital funding request and the County Executive's subsequent Capital Budget.

## **NEW DEVELOPMENTS & SCHOOL SITES**

Councilmembers asked about the possibility of land reservations for school sites at Wellington Farms (former Milk Producers property) and Taylor Highlands/The Gatherings at Taylor Place (former Shephard Pratt site), two major housing developments in progress.

Under Section 16.122 of the Subdivision and Land Development Regulations, HCPSS can request that the County reserve land for a school site in a new subdivision if the school site is proposed in the General Plan or in the County's or State's Capital program. The current General Plan (PlanHoward 2030) has no specific proposal for schools at these developments. HCPSS can initiate the process by issuing a reservation letter prior to subdivision plat recordation or site development plan approval and that land reservation can be held

for three years from the date of either of those development milestones. Funding for the purchase of the land should also be identified in the County's Capital Budget.

**Wellington Farms:** Phase I has progressed past the open window for land reservation since the plat and SDPs have been approved and recorded or are in the approval process. Phase II plat is in review and pending approval. It is possible a reservation could be applied, if HCPSS issued a reservation letter prior to recordation. HCPSS is part of an inter-agency committee that reviews site development plans and as of its review of the plan on March 28, 2022, there were with no reservation comments provided to the Department of Planning and Zoning (DPZ). In the FY2023 Capital Budget, there were no school projects identified in this development.

**Taylor Highlands & The Gatherings:** There are two plans for residential redevelopment at the former Shepard Pratt site on College Avenue. Neither of these plans has been approved yet and it is still possible that a reservation could be applied if HCPSS issues a reservation letter and the site is identified in the Capital Budget.



# Council Updates

## **CR109-111: GREENING THE GOVERNMENT**

In 2020, the Council approved CB10, the Renewable Energy Power Purchase Agreement (PPA) between the Howard County Government and the solar energy producing company of KDC Solar, LLC. This agreement authorizes the supply of renewable energy to the County Government for 25 years and fulfills the goal for 20% of all the energy used by the County to be from renewable sources. KDC Solar will build and operate solar panels on properties within the County and the County will purchase the energy generated.



The company will develop 24 megawatts (MW)-DC of solar projects on private and public properties, producing roughly 34,500,000 kilowatt-hours (kWh) each year, or around 30% of the County's power usage. Overall, the PPA will make the County more sustainable, and help the County save money. The cost per kWh of solar energy is \$0.00109/kWh lower than the current rate, saving \$37,605 a year. Additionally, KDC Solar will pay the county \$15,000 each year, which increases the amount saved to \$52,605. Over 25 years, an estimated total of \$1.2 million will be saved.

## **CR109-2022 PERSONAL PROPERTY PILOT**

This resolution proposes a payment in lieu of taxes (PILOT) on personal property owned by KDC solar and its affiliates for the solar arrays that are installed at seven County-owned locations and two privately owned farms (Clear View and Triple Creek in West Friendship). County locations include the new Circuit Courthouse, East Columbia Library and 50+ Center, Detention Center, Gateway Building, Southern District Police Headquarters, and Waterloo Fire Station. Roof and ground-mounted arrays will be installed at County facilities and ground mounts at the private farms. Per a Council amendment to CB17-2021, which changed zoning regulations to enable more solar projects, native vegetation and pollinator plants are required to accompany ground-mount solar collectors.

## **CR110 & CR111 REAL PROPERTY PILOT**

These two resolutions would provide tax breaks on real property at the two privately owned

# HoCo by Design



Howard County faces great challenges meeting the demands for adequate school capacity. As a part of the General Plan update,

HoCo By Design's School Strategic Advisory Group issued the School Planning in Howard County: Strategic Advisory Group Educational Material (May 2021) outlining historic growth trends. The advisory group also issued recommendations and proposed policy statements. Click [here](#) for more.

## HOUSING UNIT TRENDS

In recent years, the number of new apartment units have increased while new single family homes have declined. From 2011 to 2020, there were a total of 16,069 units built with 5041 (31%) single-family detached, 4380 (27%) single family attached, and 6648 (42%) apartments. From 2001 to 2010, apartments made up 28% of the total units.

## GENERAL PLAN RECOMMENDATIONS

HoCo By Design anticipates continued reduction in the rate of future growth. The limited availability of remaining land (only 2% is developable) and increasing costs of land will make building schools in the conventional format more difficult. The advisory group suggested considering alternative types of school facilities to meet future capacity needs. There are also proposals to adjust the housing allocations chart. The final recommendations will be released by the end of 2022 and these will be incorporated into the General Plan's policy statements. Preliminary growth plans include the following unit increases by 2040:

- Concept A: 18,762 new units
- Concept: B 23,707 new units
- Concept C: 28, 897 new units
- Concept D: 36,586 new units.

## SCHOOL CAPACITY PLANNING PROCESS

**Feasibility Study:** Each summer, Howard County Public School System (HCPSS) releases the latest school utilization projections.

**School Capacity Chart:** Based on the Feasibility Study, this chart is submitted to the County Council as legislation and indicates which schools are open or closed to new development based on utilization percentages set by the Adequate Public Infrastructure Ordinance (APFO). CR100-2022 was adopted last month by the Council.

## Housing Unit Allocation

**Chart:** Accompanying the School Capacity Chart is this growth management tool, which phases the approved number of housing units over time. CR99-2022 was adopted last month by the Council.

There have been 22,000 units paused since the beginning of APFO in 1992.

# County Updates

## FIRST-TIME HOMEBUYERS PROGRAM: OPEN ENROLLMENT

*Deadline July 29*

The Department of Housing and Community Development (DHCD) is now accepting applications for its first-time homeownership program. Townhouses and condos in the Moderate Income Housing Unit program are sold to income-qualifying families at significantly less than market rate. Click [here](#) for more.



## PEDIATRIC COVID VACCINES

The COVID-19 vaccine has been authorized for everyone ages 6 months and older. Click [here](#) for more.

### PFIZER-BioNTech vs. MODERNA

<b>ages 6 mo to 4 yr</b>	<b>ages 6 mo to 5 yr</b>
<b>3-dose series</b>	<b>2-dose series</b>
<b>21 days between dose 1 + dose 2 8 wks between dose 2 + dose 3</b>	<b>28 days between dose 1 + dose 2</b>
<b>dose is 10% of adult dose (3 micrograms)</b>	<b>dose is 25% of adult dose (25 micrograms)</b>
<b>side effects are minimal and manageable</b>	<b>side effects are minimal and manageable</b>



### COVID-19

COVID-19 Vaccine, Testing, Data, and Latest Updates

Click [here](#) for more.

## VILLAGE NEWS

Click for more

[Wilde Lake](#)

[Harper's Choice](#)

[Hickory Ridge](#)

[River Hill](#)

[Town Center](#)

# County Updates

## HUMAN RIGHTS AWARD NOMINATIONS

The Human Rights Commission is now seeking nominations for its 2022 Jim Henson and Jean Toomer Individual, the Dr. Murray Simon Student, and the Colette Roberts Organization awards. These awards honor individuals and community organizations who have made significant contributions to human and civil rights in Howard County. Click [here](#) for more.

Howard County  
Office of Human Rights & Equity

**The Shadow Pandemic:  
Disproportionate Impacts of  
COVID-19 on Women**

Presented by:  
**Dr. Kara Hunt, PhD**  
Director of Education & Outreach  
Maryland Commission on Civil Rights  
&  
**Dr. LaTeri McFadden, PhD**  
Adjunct Faculty  
Colorado State University Global

Click [here](#) for more.

Virtual Webinar  
Tuesday, July 19, 2022  
at 12:00 PM EST

department personnel from Police and Fire & Rescue and elected officials. Click [here](#) for more.

## NATIONAL NIGHT OUT: AUGUST 2

The national celebration of community-police partnership will be held on August 2. Community and neighborhood groups interested in a block party may now register their participation so that visits can be coordinated for

## RECYCLING IMPROVEMENT SURVEY

The Bureau of Environmental Services wants to hear from you on how it can improve recycling efforts at the County's Alpha Ridge Landfill. Click [here](#) for more.

**Know Before You Throw!**  
✓ Clean ✓ Empty ✓ Dry

*Keep it Loose  
Lose the Bag*

**YES!** Aluminum & Steel Cans  
Lids can be recycled

**YES!** Cardboard Boxes & Cartons  
Flatten boxes

**YES!** Glass Bottles & Jars

**YES!** Paper, Newspaper, Magazines & Books

**YES!** Kitchen, Laundry, Bath: Bottles & Containers  
Lids on

**NO!** No Trash or Yard Trim

**NO!** No Tangles  
No hoses, wires, chains, or cords

**NO!** No Food  
No food or food-stained paper

**NO!** No Styrofoam

**NO!** No Textiles  
No clothing, shoes, towels or rugs

410-313-6444

[help@HowardCountyRecycles.org](mailto:help@HowardCountyRecycles.org)

[HowardCountyRecycles.org](http://HowardCountyRecycles.org)

# Election Updates

The 2022 Gubernatorial Primary Election is fast approaching. Voters can cast their ballots by mail or in person.

## VOTING PREPARATION

This summer's primary elections select party-affiliated candidates for Governor, State Senators and Delegates, Attorney General, Comptroller, County Executive, Councilmembers, Board of Education Members, and Party Central Committee Members.

- Local candidates: Click [here](#) for more.
- Sample ballot (pg 357 for District 4): Click [here](#) for more.

## VOTE BY MAIL

Completed mail-in ballots can be hand delivered to drop boxes located throughout the County or returned to the Board of Elections' office. Click [here](#) for locations.

## VOTE IN PERSON

Voting in person will be available at election day centers. Click [here](#) to locate your polling center.

## IMPORTANT DATES

- Primary Election Day: July 19
- General Election Early Voting: October 27 — November 3
- General Election Day: November 3



# School Updates

## 2022 FEASIBILITY STUDY

This year's Feasibility Study presents four boundary scenarios for the opening of High School #13 in the fall of 2023. utilizes metrics such as the number of births, history of cohort survival, first-year home student generation, housing resale student generation, apartment turnover and more to project the anticipated number of future students attending each school.

Click [here](#) for more.

## REDISTRICTING SCENARIOS

**Scenario A:** Boundary extends towards the south and west receiving students from Hammond, Atholton, and Reservoir High Schools. Includes additional reassignments affecting Long Reach, Oakland Mills, and Howard.

**Scenario B:** Boundary extends along the southeast County line from Highway 32 to I-95 receiving students from Howard, Long Reach, Oakland Mills, and Hammond. Additional reassignments affect Reservoir and Mt Hebron.

**Scenario C:** Aligns with the Thomas Viaduct Middle School boundary receiving students from Long Reach, Oakland Mills, Hammond, and Atholton. Additional reassignments affect Howard and Reservoir.

**Scenario D:** Minimal impact but non-contiguous boundaries receiving students

from Howard, Long Reach, and Hammond. Additional reassignments include Mt Hebron and Reservoir. Provides most relief for Mt Hebron.

## NOW HIRING: SCHOOL STAFF

HCPSS is seeking to fill nearly 800 vacancies for various positions in the upcoming school year. These positions include teachers, counselors, liaisons, paraeducators, and other support staff. Click [here](#) for more information.

## Board of Education Public Hearings

During the next few months, the Board of Education will be seeking public input on Policy 8020 Grading and Reporting: Middle & High School as well as other topics. Click [here](#) for more .

**FREE** Click [here](#) for more.

# Summer Meals!

Weekdays: June 27-August 12  
at select locations countywide

### QUICK LINKS

[Summer reading lists](#)

[Academic calendar](#)

[Audiobook & eBook collections](#)



# Keeping up with Deb



## July 4th Parades



Heroes in Health Care



Juneteenth Ceremony



EcoWorks: Native Garden Installation

# Community Updates

## FARMERS' MARKETS

Produce fresh from local farms are available from the following farmers' markets, open from the beginning of May to the beginning of November.

- **Miller Branch Library**

Wednesdays, 2pm-6pm

- **Clarksville Commons**

Saturdays, 10am-2pm

- **Oakland Mills Village Center**

Sundays, 9am-1pm

- **East Columbia Branch Library**

Thursdays, 12pm-6pm

- **Maple Lawn Farmers' Market**

7405 Maple Lawn Boulevard, Fulton

Saturdays, 9am-1pm



## TWIN RIVERS TUNNEL CLOSURE

Enterprise Community Development has informed the community that the tunnel under Twin Rivers Road will close on or after July 14 for the initiation of redevelopment construction at Roslyn Rise. It is anticipated to be closed for approximately 20 months during the duration of construction.

## BRIDGES TO HOUSING STABILITY ACQUIRES NEW PROPERTIES

Bridges to Housing Stability has assumed control of the five rental properties previously managed by Help End Homelessness Howard County, a volunteer-run program formed by congregants of Kittamanqundi Church that provided subsidized housing for single working mothers. Click [here](#) for more.



*We're Helping Local Students*  
**PREPARE for SUCCESS**

### DONATIONS NEEDED

Backpacks	Colored Pencils
Folders	Crayons 24 packs
Composition Books	Pencils
Spiral Notebooks	Glue Sticks
Rulers	Highlighters (Yellow)
Pencil Boxes	Index Cards
Scissors	Erasers
Pencil Sharpeners	Markers (Wide Tip)

**Drop-off or have delivered by July 29th**  
5460 Ruth Keeton Way - Columbia, MD 21044

# Upcoming Events



HOWARD COUNTY  
**RESTAURANT weeks** & *craft BEVERAGES*  
JULY 11 – JULY 24

Click [here](#) for more.



**The Chrysalis**  
Symphony Woods' outdoor performance venue features special events and weekly activities. Click [here](#) for more.

**Destination Downtown**  
ALL THINGS ARTS & CULTURE

Destination Downtown  
Art, music, outdoor movies, and community are on the line-up in Downtown Columbia. Click [here](#) for more..

## Summer Concerts

The Department of Recreation & Parks will host its summer concert series at Centennial Park. Click [here](#) for more.




CA PRESENTS  
**LakeFront Live**  
MUSIC FOOD FRIENDS

### Dancin Under The People Tree

Fri, July 22 @ 7:00 pm-8:00 pm  
Free dance instruction with music held under the People Tree at the Downtown Columbia Lakefront. Com...

### Spider-Man: No Way Home

Fri, July 22 @ 8:30 pm-10:30 pm  
All movies begin at dusk (around 8:30pm in early summer and 8-8:15pm in late summer). All films are ...

### Oracle

Sat, July 23 @ 7:30 pm-9:30 pm  
Oracle is an exciting band that features rich vocal harmonies and a fat 12-15 piece musical sound fr...

## Change in Columbia Speaker Series

Columbia Association

July 26, 7-8.30pm

Change in Columbia Speaker Series is an interactive session and panel discussion about how Columbia's built environment has evolved, how to balance preservation and development, and how to get involved in the process. Click [here](#) for more.



**Change in Columbia**  
SPEAKER SERIES

Change in Columbia Speaker Series  
Tue, July 26 @ 7:00 pm-8:30 pm

## Upcoming Events



I am so pleased to announce the arrival of this new stage performance by my college friend Charles Randolph-Wright. It is a groundbreaking musical powered by Frederick Douglass' own speeches and writings. New melodies and an original script from Grammy Award-winning songwriter Marcus Hummon and Randolph-Wright celebrate Douglass as a fierce abolitionist and distinguished orator. The Arena Stage in Washington, DC, is lucky to be the world premiere of this electrifying performance.

Click [here](#) for more.

---

# Upcoming Events

## MERRIWEATHER MOVIE NIGHTS



**JULY 15**

**JUNE 17**



**ENCANTO**



**THE GOONIES**

**JULY 21**



**SUMMER OF SOUL**

# FREE!

**DOORS AT 6 PM - SHOW AT 7 PM**  
**GET INFO AND REGISTER AT**  
**[DCACC.INFO/MPPMOVIES](https://dcacc.info/mppmovies)**

