



Florida Watercolor Society 2023 Non-Signature Member Online Show

**CALL FOR
ENTRIES!**

Who?

Artists who are FWS Members NOT a Signature Member of FWS, NWS, or AWS who did not win an award in the FWS 2022 Annual Exhibition. Dues must be current.

OR

New Members* who join by November 25th, 2022.

**Residency restrictions apply.*

New Members who joined at Convention or join before end of year will extend FWS membership through 2023 (renew 12/31/23).

What?

Artists may enter up to three (3) paintings completed after January 1, 2020 and not previously shown in any FWS Annual or Online Exhibitions. **\$15 per entry.** Eligible artwork is limited to water-soluble media* on approved surfaces* for watermedia. Minimum image size 80 square inches. **Additional details will be emailed, posted on the website and listed in the CaFE information. Read All Communications Carefully; there are no refunds, no matter the reason for disqualification.*

When?

Entries Accepted October 3 - December 7th, 2022 at 11:59PM

Acceptance Notification in Late December, awards during live Exhibition Review, and display on FWS website from mid-January to November 2023.

Where?

Entries and payment must be made online through CaFE (www.callforentry.org). Step-by-step instructions are available on the CaFE website. Images should be JPEG or JPG under 5MB with a minimum of 1200 pixels on longest side.

Why? New in 2022: A one time, one point upgrade in status is given to award winners in this Online Show!

Awards

First Place: \$1000
Second Place: \$500
Third Place: \$300
Merit Awards (3) \$100

IMPORTANT: Any photo reference must have been taken by you. The painting must be the artist's own idea, composition and design, painted by hand, and not copied from another artist's or photographer's work, in whole or in part, with or without permission, nor done in a class or workshop, with the help of an instructor, nor repainted from another painting by you from the exact same source image more than two years prior without substantial modification (i.e.: a copy of your own work too old to enter.) Collage is acceptable only if it is from paper painted by the artist in water media, in an aqueous manner. Photographs, printed words, reproductions, digital images, or work created digitally are not permitted.

Terms and Conditions: All entries and artists will be vetted for eligibility before going to the judge. Artists found in vetting to have changed the creation date of submitted work to meet entry requirements will have **all of their entries** disqualified, removed, and will forfeit all fees paid. Ineligible materials will result in disqualification and forfeit of fees paid. Violation of eligibility rules can result in a letter of reprimand, possible suspension from FWS Exhibitions for a determined period of time. The decision of the Compliance Committee and Board is final.

Acceptance to the Show grants FWS permission to use artwork, title, name, and hometown for advertising this or other FWS shows, online, in print or video content for publicity or educational purposes. Permission to use the submitted digital image for educational purposes is granted.

Work accepted into this show is not eligible for submission into other FWS Shows and only constitutes an upgrade in status if an award is received. There are no framing restrictions for this show.

No Shipping!
No Drop-off!
No Framing Restrictions!



2022 Second Place
Sedges
Edgar Carabio



2022 First Place
Lucinda II
Tammy Seymour

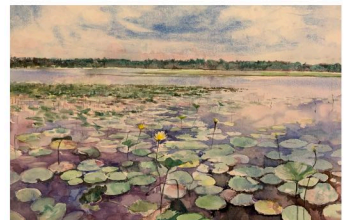
Judge & Juror -
Bob Burrige
will select up to
100 images to
show.
Only one
painting per
artist may be
accepted.



2022 Third Place
Libit
Kay Bronstein



2022 Merit Award
COVID Volunteer
Vicki Littell



2022 Merit Award
Lake Iamonia II
Yoshiko Murdick



2022 Merit Award
Golden Point of View
Roberta Romeo

Questions?

Contact

FWS Exhibition

Director, Nancy

Murphree Davis at

exhibitiondirectorfws@gmail.com

See complete rules on
the website:

www.floridawatercolorsociety.org

Updated 9/14/22

FWS Exhibition Accepted Materials List

Updated September 2022

The Florida Watercolor Society produces two member exhibitions per year. Rules and guidelines apply to every artist and every entry to ensure all entrants have an equal chance of acceptance. Each year, there are those who submit work that is ineligible for various reasons. Many times the artist did not read all of the rules, but sometimes they misrepresent themselves or their work thinking it will not be discovered. The Reprimand Chart was developed to assist the Board when facing these situations.

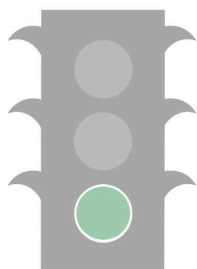
The Exhibition Director and support team vet each artist and each artwork for eligibility in an attempt to address any problems before artwork goes to the judge/juror. Catching ineligible work before it goes to the judge/juror is a painstaking, time-consuming job. When ineligible work is uncovered after a judge makes his or her selections and the show is received, a spot has been taken away from another artist who followed the rules. We make every possible effort to prevent this, and issue Reprimands in increasing harshness depending on the severity of the infraction.

Selected work is examined at take-in (for physical shows) by a Compliance Committee consisting of the current President and two other Signature Members. Often, infractions are discovered during this examination and the Board must deal with each issue on a case-by-case basis. Alternates are chosen in the event artwork is deemed ineligible in accordance with these rules.

SO...WHAT'S ELIGIBLE? HERE IS A PARTIAL LIST THAT MAY HELP...

Eligible Media (what you use to create the image)

Pencil lines only to draw out painting
Watercolor - transparent to opaque
Gouache
Acrylic
Watercolor Pencil
Watercolor Crayon
Watercolor Inks
Acrylic inks
Alcohol inks
Gesso
Wax resist for batik (wax removed)



Eligible Substrates (what you paint on)

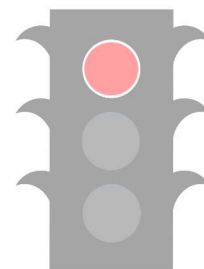
Watercolor paper, any brand
Mounted watercolor paper
Watercolor board; illustration board
Aquaboard, Claybord & other flat or cradled panels
Panels coated with watercolor ground or gesso
Unframed Cradled boards, painted directly/mounted onto, 1.5"-2"
Framed flat 1/8" or cradled 3/4"-7/8" Aquaboard, Claybord, etc.
White tissue paper (for collage only)
White rice paper
White handmade paper

Eligible Presentation

Traditionally framed under Plexiglas (acrylic)
White top mat
Floated on white with no top mat
Floated on a color with a white top mat
One-quarter inch colored inner or floater mat
Plexiglas (acrylic) glazing
Coated wire preferred
Varnished cradled board
Varnished painting on paper (mounted or framed)
Floater frame for flat varnished panels
Acrylic varnish (spray can)
Wax varnish

Ineligible Media (not limited to...)

Heavy graphite pencil
Water-soluble oil paint
Oil pastels or crayons
Chalk pastels
Modeling paste
Acrylic texturing mediums
Foil
Glitter
String
Newspaper, magazine images
Wax-based crayons
Wax-based colored pencils
Gelli or other printmaking



Ineligible Substrates (not limited to...)

Black or colored watercolor paper
Drawing paper
Typing paper, copy paper
Cardboard
Any kind of canvas
Paper embedded with seeds or other materials
White tissue paper (for collage only)
Sculpted or textured paper
Textured boards
Colored paper

Ineligible Presentation (not limited to...)

Traditionally framed under glass
Matted work without acrylic glazing
Linen liners, lip liners
Sawtooth hangers
Screw eyes for wire (D-straps preferred)
String, fishing line, or other wire substitutes
Gaping frame corners
Blemished, marred, or discolored mats
Colored, painted, or ornate frames
Colored top mat
Scratched, marred, or damaged frames

Reprimands - Updated September 2022

Artist/Artwork Violations	Before Judging	At Take-In	After Hanging
Ineligible materials, substrates, or collage	DISQUALIFIED	DISQUALIFIED, REPLACED BY ALTERNATE, POSSIBLE REPRIMAND	DISQUALIFIED, REMOVAL FROM SHOW, LETTER OF REPRIMAND, 2-YEAR SUSPENSION, AWARD RESCINDED
Ineligible frames, mats, presentation issues (work dislodged from mat, etc.)	N/A	OPPORTUNITY TO CORRECT THE ISSUE BY THE END OF TAKE-IN OR REPLACED BY ALTERNATE	ARTIST TO REPAIR DAMAGE OR ISSUE OR WORK REMOVED FROM SHOW
Submission of artwork created in workshop or under supervision of instructor	ARTIST & ALL WORK ENTERED DISQUALIFIED; POSSIBLE REPRIMAND	DISQUALIFIED, REPLACED BY ALTERNATE, POSSIBLE REPRIMAND	DISQUALIFIED, REMOVAL FROM SHOW, LETTER OF REPRIMAND, 2-YEAR SUSPENSION, AWARD RESCINDED
Given creation date too old	DISQUALIFIED	N/A, WOULD BE DETERMINED IN VETTING	N/A, WOULD NOT HAVE BEEN INVITED
Creation date determined to be misrepresented and not eligible under Prospectus	ARTIST & ALL WORK ENTERED DISQUALIFIED; POSSIBLE REPRIMAND	DISQUALIFIED, REPLACED BY ALTERNATE, LETTER OF REPRIMAND, POSSIBLE SUSPENSION	DISQUALIFIED, REMOVAL FROM SHOW, LETTER OF REPRIMAND, 2-YEAR SUSPENSION, AWARD RESCINDED
Art too large/small; subject matter violates venue rules	DISQUALIFIED	DISQUALIFIED, REPLACED BY ALTERNATE, POSSIBLE REPRIMAND	N/A, WOULD NOT HAVE BEEN HUNG
Copyright infraction; all source materials are not original to the artist	ARTIST & ALL WORK ENTERED DISQUALIFIED; POSSIBLE REPRIMAND	DISQUALIFIED, REPLACED BY ALTERNATE, LETTER OF REPRIMAND, POSSIBLE 2-YEAR SUSPENSION	DISQUALIFIED, REMOVAL FROM SHOW, LETTER OF REPRIMAND, 2-YEAR SUSPENSION, AWARD RESCINDED
Alteration of work between selection and take-in; delivery of wrong painting	N/A	DISQUALIFIED, REPLACED BY ALTERNATE, POSSIBLE REPRIMAND	N/A, WOULD NOT HAVE BEEN HUNG
Failure to deliver a selected painting to take-in	N/A	DISQUALIFIED, REPLACED BY ALTERNATE, POSSIBLE REPRIMAND	N/A
Backing out of the Traveling Show	N/A	POSSIBLE REPRIMAND	N/A

- There are no refunds of entry fees, no matter the reason.
- Ineligible paintings may NOT be exchanged for other work.
- Reprimands are given at the discretion of the Board of Directors whose decisions are final.
- Reprimands become more severe for the same violation if the chance of being in the show is taken away from another artist, whether or not an Alternate steps in.
- For some infractions, such as copyright infringement or misrepresentation, the artist and all entries for that show are disqualified, and may incur reprimands even though the judge will never see the work.
- There are no framing restrictions for Online Show work, whether or not the work is invited to show at the FWS Convention.
- If a Traveling Show painting sells at one of the venues, it will be removed from the TS to avoid the possibility of damage in transit.