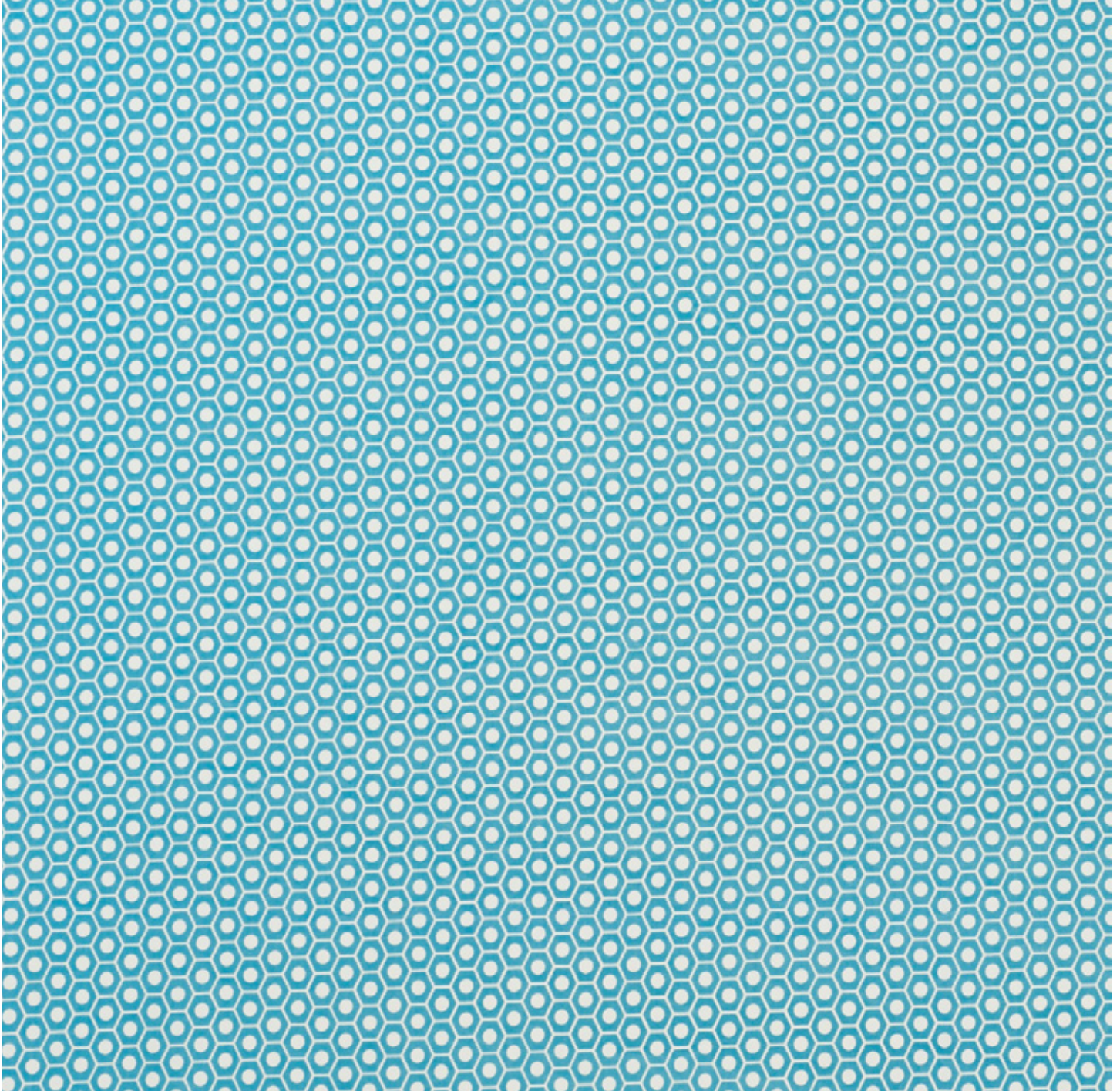


INDOOR / OUTDOOR
BY STUDIO BON



SCHUMACHER

INDOOR / OUTDOOR BY STUDIO BON

Bonnee Sharp of Studio Bon has been making beautiful hand printed textiles since the 1990s. With this collection we have taken the same happy prints you know and love and made them suitable for outdoor use. The result? A collection chock full of graphic designs in a variety of scales and coordinated colorways that are meant to be mixed and matched.

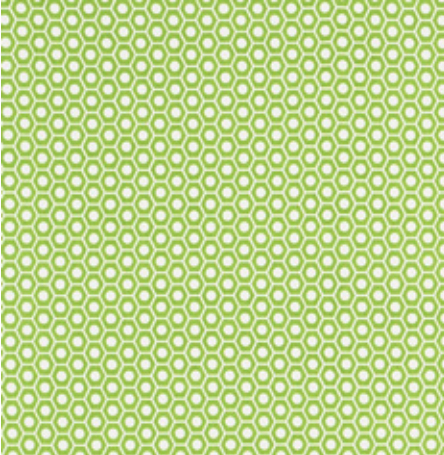


pattern index

QUEEN B II.....	4
RIC RAC II.....	5
COSMOS II.....	6
SATAREH II.....	6
STELLA II.....	7
GRASS II.....	8
OOMPA II.....	8
FUZZ II.....	9
STRIPEDOT II.....	10
PENNANT II.....	10
JUMBLE II.....	11

Queen B II

Suitable for indoor or outdoor use, these textiles are equally appropriate for dens or decks. Made to mix and match, the design possibilities are endless.



GREEN 176560

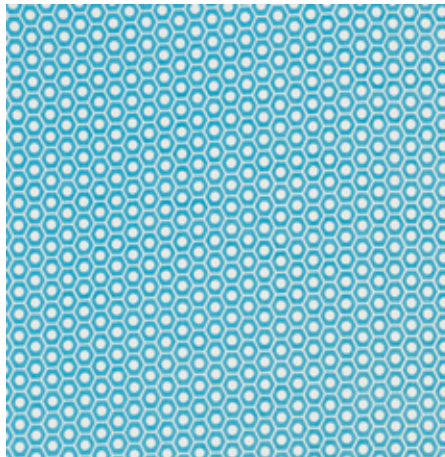


SAND 176561

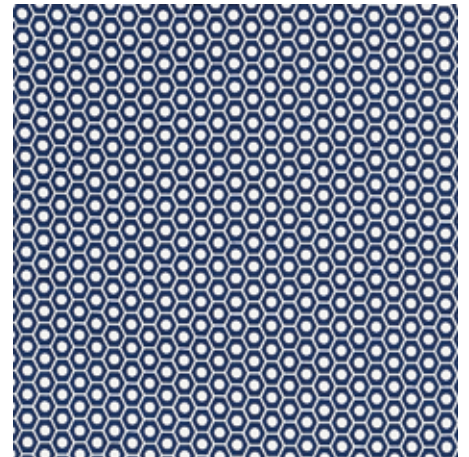
WIDTH **54" (137CM)**
VERT REPEAT **7/8" (2CM) (137CM)**
HORZ REPEAT **1 1/4" (3CM)**
CONTENTS **100% Acrylic Plain Weave**
COUNTRY **United States of America**
CARE **Dry Cleaning Recommended**
APPLICATION **Multipurpose**



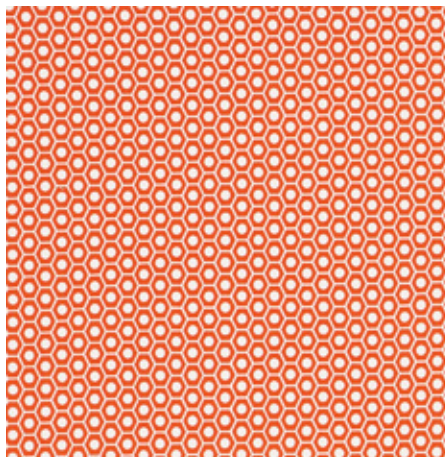
GREY 176562



AQUA 176563



NAVY 176564



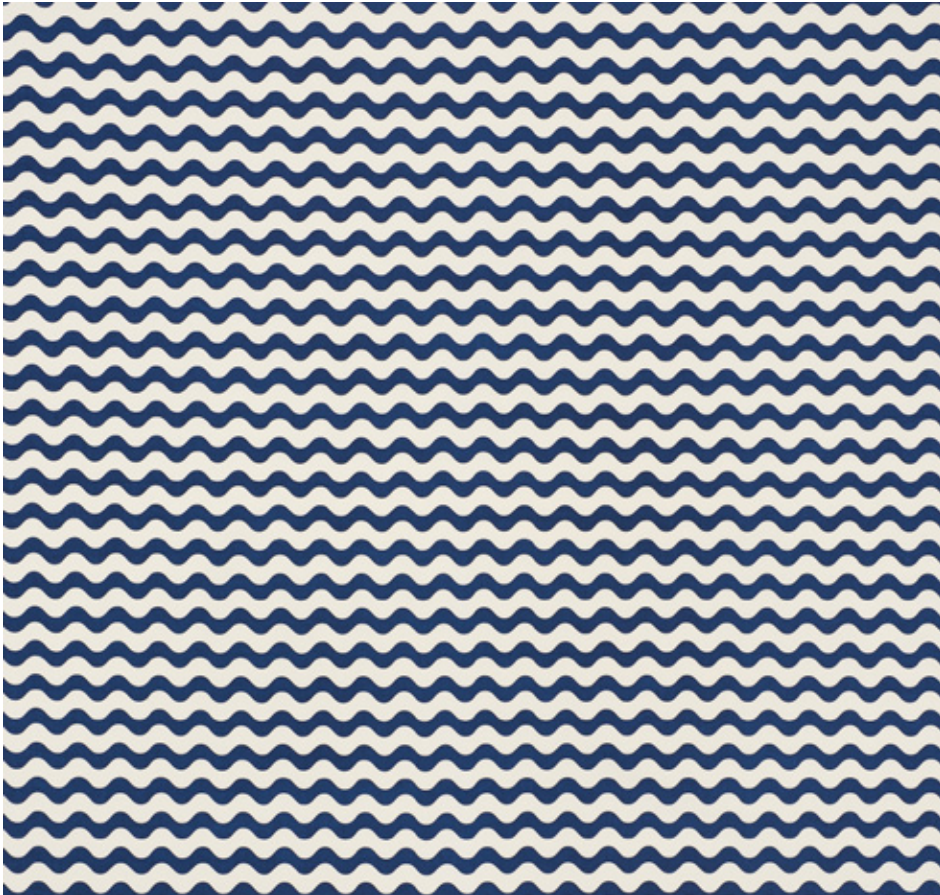
RED 176565



BLACK 176566

Ric Rac II

Suitable for indoor or outdoor use, these textiles are equally appropriate for dens or decks. Made to mix and match, the design possibilities are endless.



NAVY 176623



GREEN 176621



AQUA 176622



BLACK 176624



SAND 176625



YELLOW 176620

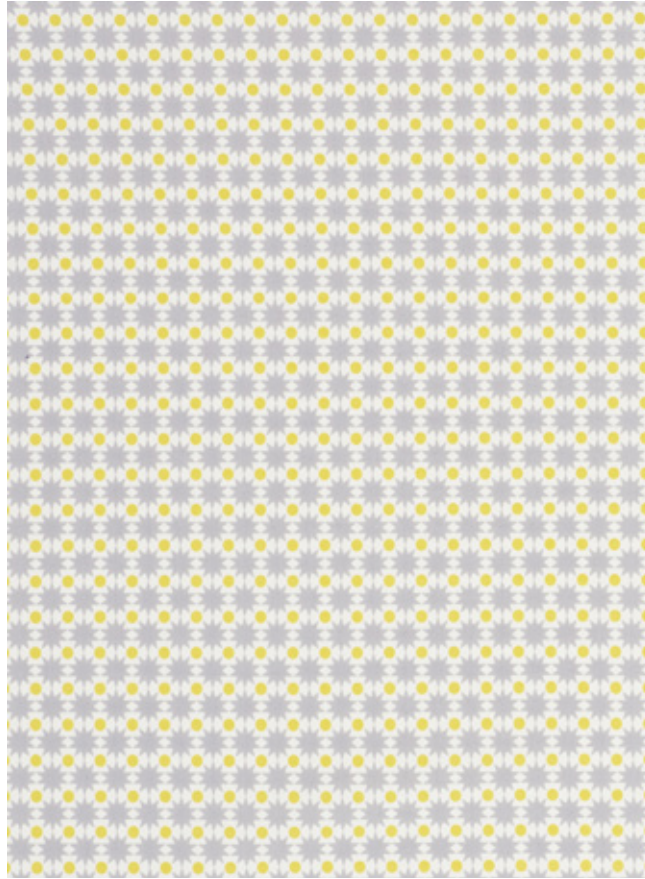
CONTENTS 100% Acrylic Plain Weave
COUNTRY United States of America
CARE Dry Cleaning Recommended
APPLICATION Multipurpose



NAVY & RED 176550



BLACK & SAND 176552



Cosmos II

Suitable for indoor or outdoor use, these textiles are equally appropriate for dens or decks. Made to mix and match, the design possibilities are endless.

WIDTH **54" (137CM)**
 VERT REPEAT **11 1/4" (3CM)**
 HORZ REPEAT **1 1/8" (3CM)**
 CONTENTS **100% Acrylic Plain Weave**
 COUNTRY **United States of America**
 CARE **Dry Cleaning Recommended**
 APPLICATION **Multipurpose**

GREY & YELLOW 176551

Satareh II

Suitable for indoor or outdoor use, these textiles are equally appropriate for dens or decks. Made to mix and match, the design possibilities are endless.

WIDTH **54" (137CM)**
 VERT REPEAT **11 1/4" (29CM)**
 HORZ REPEAT **6" (15CM)**
 CONTENTS **100% Acrylic Plain Weave**
 COUNTRY **United States of America**
 CARE **Dry Cleaning Recommended**
 APPLICATION **Multipurpose**



BLACK 176611



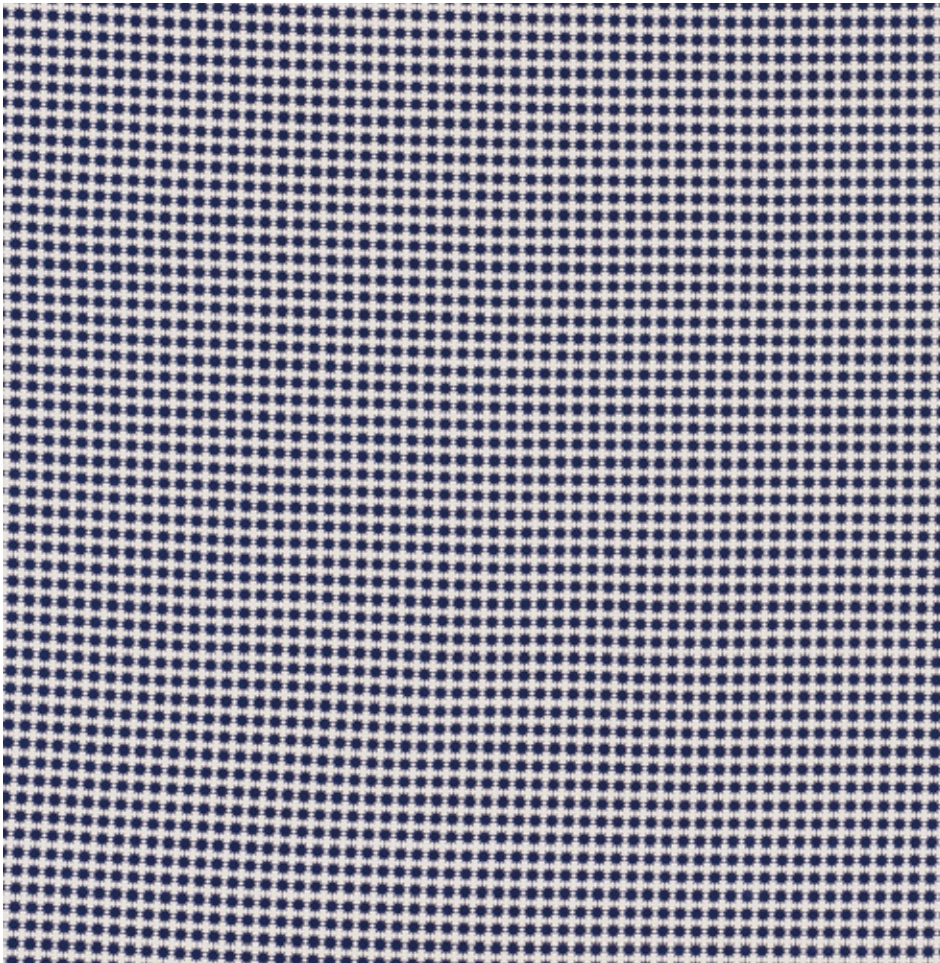
NAVY 176612



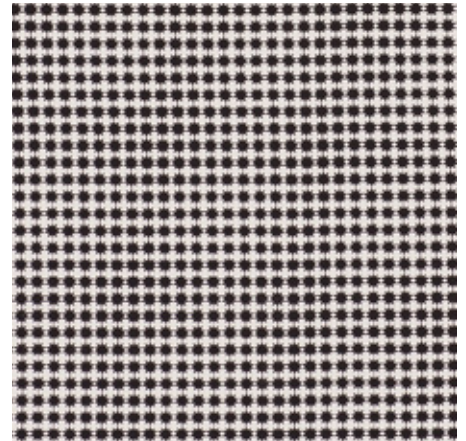
YELLOW 176610

Stella II

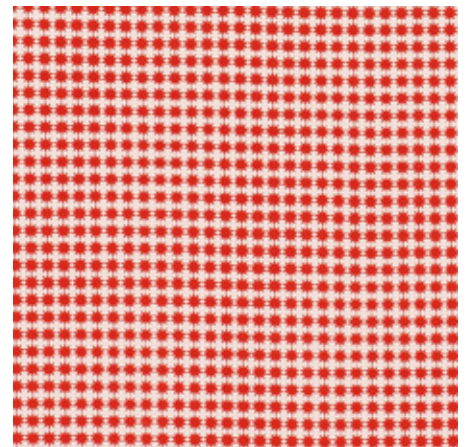
Suitable for indoor or outdoor use, these textiles are equally appropriate for dens or decks. Made to mix and match, the design possibilities are endless.



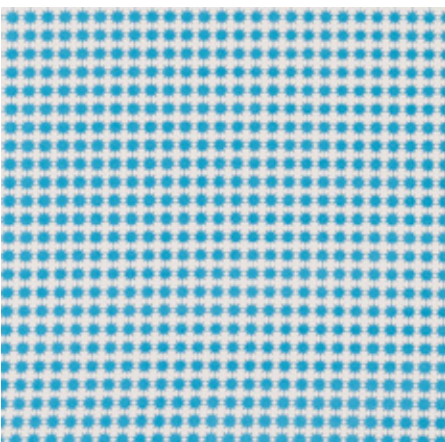
NAVY 176570



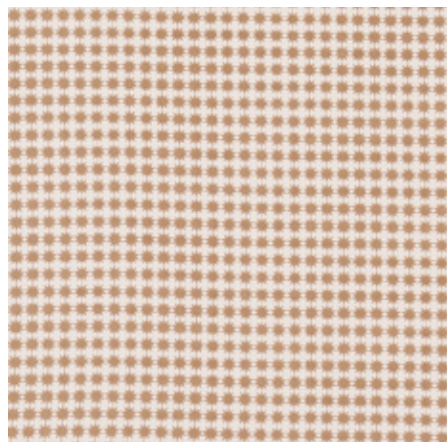
BLACK 176571



RED 176572



AQUA 176573



SAND 176574

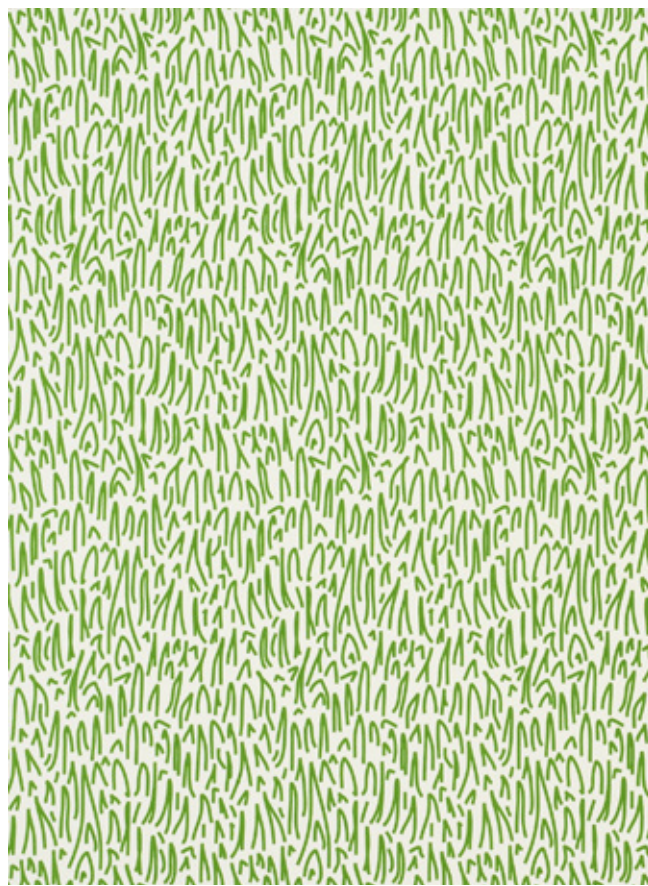
WIDTH 54" (137CM)
VERT REPEAT 3/8" (1CM)
HORZ REPEAT 3/8" (1CM)
CONTENTS 100% Acrylic Plain Weave
COUNTRY United States of America
CARE Dry Cleaning Recommended
APPLICATION Multipurpose



NAVY 176601



BLACK 176602



Grass II

Suitable for indoor or outdoor use, these textiles are equally appropriate for dens or decks. Made to mix and match, the design possibilities are endless.

WIDTH **54" (137CM)**
 VERT REPEAT **16 3/4" (43CM)**
 HORZ REPEAT **9" (23CM)**
 CONTENTS **100% Acrylic Plain Weave**
 COUNTRY **United States of America**
 CARE **Dry Cleaning Recommended**
 APPLICATION **Multipurpose**

GREEN 176600

Oompa II

Suitable for indoor or outdoor use, these textiles are equally appropriate for dens or decks. Made to mix and match, the design possibilities are endless.

WIDTH **54" (137CM)**
 VERT REPEAT **4 1/4" (11CM)**
 HORZ REPEAT **6" (15CM)**
 CONTENTS **100% Acrylic Plain Weave**
 COUNTRY **United States of America**
 CARE **Dry Cleaning Recommended**
 APPLICATION **Multipurpose**



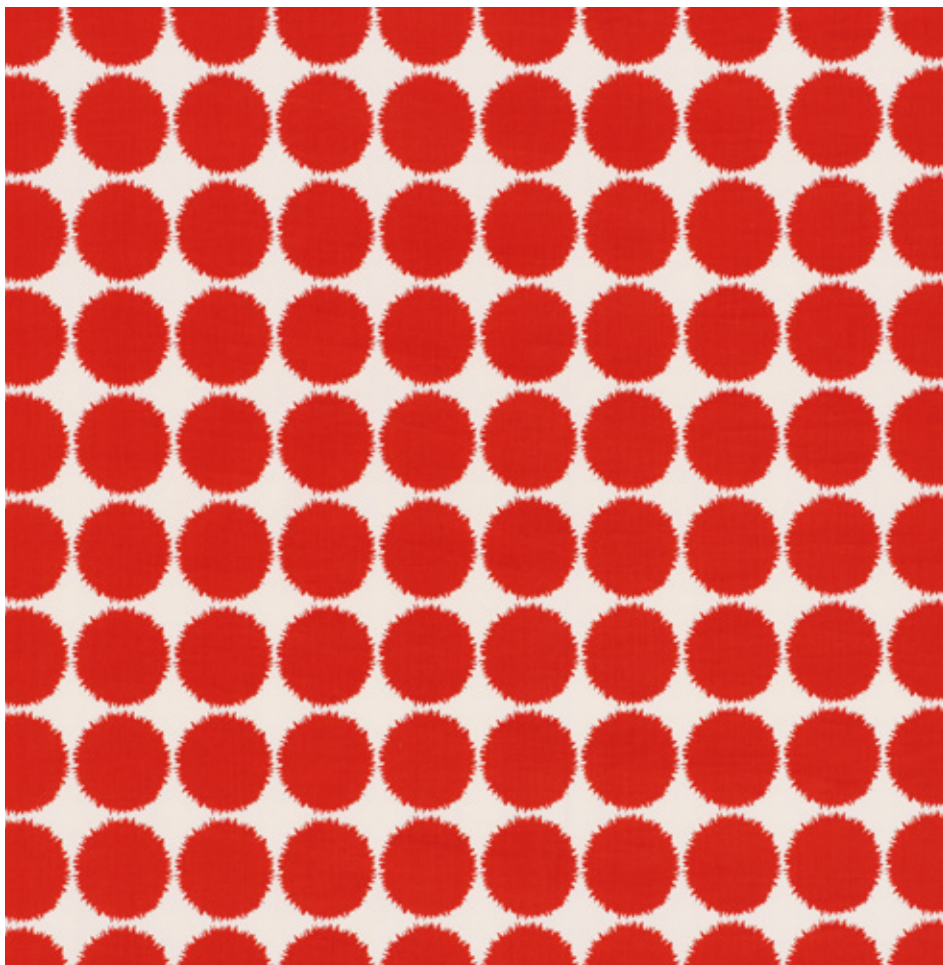
AQUA 176631



YELLOW 176630

Fuzz II

Suitable for indoor or outdoor use, these textiles are equally appropriate for dens or decks. Made to mix and match, the design possibilities are endless.



RED 176580



NAVY 176581



BLACK 176582



SAND 176584



GREY 176583

WIDTH 54" (137CM)
VERT REPEAT 4" (10CM)
HORZ REPEAT 3 7/8" (10CM)
CONTENTS 100% Acrylic Plain Weave
COUNTRY United States of America
CARE Dry Cleaning Recommended
APPLICATION Multipurpose



SAND 176591



NAVY 176592



BLACK 176593



Stripedot II

Suitable for indoor or outdoor use, these textiles are equally appropriate for dens or decks. Made to mix and match, the design possibilities are endless.

WIDTH **54" (137CM)**
 VERT REPEAT **12 1/2" (32CM)**
 HORZ REPEAT **1/2" (1CM)**
 CONTENTS **100% Acrylic Plain Weave**
 COUNTRY **United States of America**
 CARE **Dry Cleaning Recommended**
 APPLICATION **Multipurpose**

GREEN 176590

Pennant II

Suitable for indoor or outdoor use, these textiles are equally appropriate for dens or decks. Made to mix and match, the design possibilities are endless.

WIDTH **54" (137CM)**
 VERT REPEAT **2 1/4" (6CM)**
 HORZ REPEAT **2 1/4" (6CM)**
 CONTENTS **100% Acrylic Plain Weave**
 COUNTRY **United States of America**
 CARE **Dry Cleaning Recommended**
 APPLICATION **Multipurpose**



SAND & BLACK 176640



GREEN & AQUA 176641



NAVY & RED 176642



NAVY 176671



RED 176672



SAND 176673



Jumble II

Suitable for indoor or outdoor use, these textiles are equally appropriate for dens or decks. Made to mix and match, the design possibilities are endless.

WIDTH **54" (137CM)**
VERT REPEAT **6 1/4" (16CM)**
HORZ REPEAT **18" (46CM)**
CONTENTS **100% Acrylic Plain Weave**
COUNTRY **United States of America**
CARE **Dry Cleaning Recommended**
APPLICATION **Multipurpose**

BLACK 176670