



make it  
yours®

# BEDROOM

Personalize your bedroom case pieces with a variety of options, including custom embellishments and hundreds of finish options.

It's simple! Choose your case. Choose your base.  
Choose your face. Choose your hardware and its place.

VANGUARD®

FURNITURE

[WWW.VANGUARDFURNITURE.COM](http://WWW.VANGUARDFURNITURE.COM)

# Make It Yours® Bedroom



Choose your bedroom case piece and add a base style. Select an overlay design for drawers and doors and choose a hardware option and placement. Add a personalized finish and an optional custom embellishment to create a look that is completely your own. Personalize your bedroom — *make it yours.*

## 1 CHOOSE your CASE.



**WILLIAMS TALL DRESSER (CC01)**  
W 73 D 22 H 30.25 (+base)  
Not available with F11 Drawer Face



**MCGUIRE DRESSER (CC02)**  
W 73 D 22 H 24.75 (+base)



**MCKINNEY SIDE TABLE (CC03)**  
W 37.25 D 19 H 24.75 (+base)



**BARNES SIDE TABLE (CC04)**  
W 37.25 D 19 H 24.75 (+base)



**MANNING SIDE TABLE (CC05)**  
W 37.25 D 19 H 24.75 (+base)



**PROSSER DRAWER CHEST (CC06)**  
W 48 D 22 H 28.25 (+base)



**GOTTFRIED SIDE TABLE (CC07)**  
W 37.25 D 19 H 24.75 (+base)



**JONES SIDE TABLE (CC08)**  
W 30 D 19 H 23 (+base)  
(pull will match hardware finish)



**CREMENS SIDE TABLE (CC09)**  
W 30 D 19 H 23 (+base)



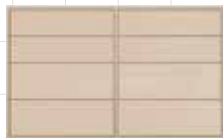
**HOLLAND SIDE TABLE (CC10)**  
W 30 D 19 H 23 (+base)  
(pull will match hardware finish)



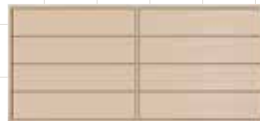
**TRACY SIDE TABLE (CC11)**  
W 24 D 19 H 24.5 (+base)



**CLAWSON SIDE TABLE (CC12)**  
W 24 D 19 H 28  
NO BASE OPTIONS



**MILBURN DRESSER (CC13)**  
W 73 D 22 H 37.50 (+base)



**VANCE DRESSER (CC14)**  
W 58.5 D 22 H 29.75 (+base)



**WILEY TALL CHEST (CC15)**  
W 48 D 22 H 45.50 (+base)



**BRITTON SMALL DRAWER CHEST (CC17)**  
W 23.25 D 19 H 23 (+base)



**MERCER TALL CHEST (CC18)**  
W 37.25 D 19 H 47.75 (+base)

## 2 CHOOSE your BASE.



**Tapered Leg (A)**  
Base Height: 7"  
(CC11 Base Height: 4")



**Bracket Leg (B)**  
Base Height: 5.75"  
(CC11 Base Height: 4")



**Saber Leg (C)**  
Base Height: 7" (CC11 Base Height: 4")  
Note: This base option increases overall width by 4".



**Plinth Base (D)**  
Base Height: 4"  
(CC11 Base Height: 3")



**Turned Leg (E)**  
Base Height: 7"  
(CC11 Base Height: 4")



**Turned Leg with Ferrule (F)**  
Base Height: 7" (CC11 Base Height: 4")  
\*Choose your ferrule finish.



**Metal Tube Leg (G)**  
Base Height: 5.75" (CC11 & CC17 Base Height: 4")  
\*Choose your metal finish.

**\*NOTE ON LEGS F AND G:** Choose your ferrule or metal finish: Antique Bronze, Brushed Nickel or Satin Brass. Finish selection must also be used on hardware option. No other finish options available on metal components.

### 3 CHOOSE *your* STANDARD DRAWER FACE OR PREMIUM FACE.

Overlay designs are applied to the face of each drawer and door front.

#### STANDARD DRAWER FACE OPTIONS



**Outside Bead (F01)**



**Inside & Outside Bead (F02)**

Not recommended with H13 Hardware. Not recommended with H06 Hardware on CC01, CC02, CC03, CC04 or CC07 Cases. Not recommended with H10, H11, H12, H13, H14, H15, H18, H21 or H29 Hardware on CC08, CC09 or CC10 Cases.



**Clip Corner (F03)**



**Thin Classic (F04)**

Recommended with H01, H02, H03, H08, H19, H22, H23, H24, H26, H27, H28, H30, H31, Hardware only.



**Bamboo (F05)**

Not available with combination finishes or highlight striping.



**S Curve Panel (F06)**

Not recommended with H13 Hardware. Not recommended with H10, H11, H12, H13, H15, H18, H21 or H29 Hardware on CC08, CC09 or CC10 Cases.



**Ribbon (F07)**



**Greek Key (F08)**



**Corduroy (F09)**



**Step Panel (F10)**

Not recommended with H11, H12, H13, H21 or H29 Hardware on CC08, CC09 or CC10 Cases.



**Mod (F11)** Paint & Leaf Finishes Only\* (Not available on CC01)

Recommended with H01, H02, H03, H04, H05, H06, H07, H08, H19, H20, H22, H23, H24, H26, H27, H28, H30, H31 and H32 Hardware only.



**Grass Cloth (F12)**



**Clean (F13)**

# Make It Yours® Bedroom

## STANDARD DOOR FACE OPTIONS



**Outside Bead (F01)**



**Inside & Outside Bead (F02)**



**Clip Corner (F03)**



**Thin Classic (F04)**

Not recommended with H18 Hardware. Not recommended with H08, H09, H11, H13, H16, H17, H19, H21, H22, H25, H29 or H31 Hardware in P3 Position (Centered on Doors).



**Bamboo (F05)**

Not available with combination finishes or highlight striping.



**S Curve Panel (F06)**



**Ribbon (F07)**



**Greek Key (F08)**



**Corduroy (F09)**

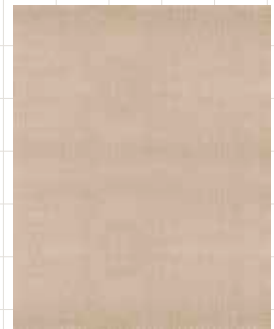


**Step Panel (F10)**



**Mod (F11)**

Paint & Leaf Finishes Only\*  
Not recommended with H09, H13, H16, H17, H18 or H25 Hardware.



**Grass Cloth (F12)**



**Clean (F13)**

*\*Refer to the Vanguard website for restrictions on select face/hardware combinations.*



# Make It Yours® Bedroom

## PREMIUM DRAWER/DOOR FACE OPTIONS Premium drawer/door face is an additional charge.



**Ash Burl**

Available in all Standard Stain Finishes and Recommended Burl Finishes. Shown in Moon Shadow.



**Bird's Eye Maple**

Available in all Standard Stain Finishes. Shown in Moon Shadow.



**Amate - Café**



**Amate - Natural**



**Amate - Slate**



**Bone Chevron**



**Bone Circle**



**Coconut Fiber**



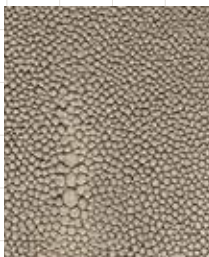
**White Capiz**



**Charcoal Shagreen**



**Dew Shagreen**



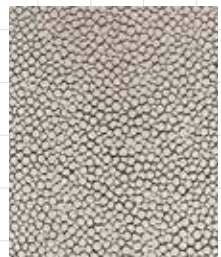
**Fog Shagreen**



**Mist Shagreen**



**Sand Shagreen**



**Silverlake Shagreen**

*\*Refer to the Vanguard website for restrictions on select face/hardware combinations.*

#### 4 CHOOSE your STANDARD OR OPTIONAL PREMIUM HARDWARE.

All STANDARD hardware, unless noted, available in Antique Bronze, Brushed Nickel or Satin Brass. Refer to the Vanguard website for restrictions on select face/hardware combinations.

#### STANDARD HARDWARE



**Round Ball Pull  
(H01)**  
Diameter 1.25  
Shown in Satin Brass



**Round Frosted Glass Pull  
(H02)**  
Diameter 1.375  
**Not Available in Antique Bronze**  
Shown in Satin Brass



**Namaste Pull  
(H03)**  
W 1 H 1  
Shown in Satin Brass



**Tranquility Pull  
(H04)**  
W 1.5 H 2  
Shown in Satin Brass



**Small Wallace Pull  
(H05)**  
W 1.5 H 1.5  
Shown in Satin Brass



**Large Wallace Pull  
(H06)**  
W 2.375 H 2.375  
Shown in Satin Brass



**Oval Pull Vertical  
(H07)**  
W 1.5625 H 3.875  
Shown in Brushed Nickel



**Oval Pull Horizontal  
(H08)**  
W 3.875 H 1.5625  
Shown in Brushed Nickel



**Trumpet Pull with  
Backplate (H09)**  
Diameter 2.5  
Shown in Satin Brass



**Small Ring  
(H10)**  
W 2 H 2.5  
Shown in Satin Brass



**Large Ring  
(H11)**  
W 2.75 H 3.3125  
Shown in Satin Brass



**Teardrop Ring  
(H12)**  
W 1.375 H 2.5  
Shown in Satin Brass



**Lion's Head  
(H13)**  
W 2.5 H 3.625  
Shown in Brushed Nickel



**Deco Pendant  
(H14)**  
W 0.75 H 2.25  
Shown in Brushed Nickel



**Modern Pendant  
(H15)**  
W 0.875 H 2.625  
Shown in Brushed Nickel



**Crescent Bail Pull  
(H16)**  
W 5.125 H 2  
Shown in Antique Bronze



**Classic Bail Pull  
(H17)**  
W 5.5 H 1.5  
Shown in Satin Brass



**Modern Bail Pull  
(H18)**  
W 7 H 2.125  
Shown in Satin Brass



**Acrylic Bar Horizontal  
(H19)**  
W 7.5 H 0.625  
Shown in Brushed Nickel



**Acrylic Bar Vertical  
(H20)**  
W 0.625 H 7.5  
Shown in Brushed Nickel

# Make It Yours® Bedroom

## OPTIONAL PREMIUM HARDWARE *(additional charge)*

Only H21, H22 and H23 PREMIUM hardware options are available in Antique Bronze, Brushed Nickel or Satin Brass. Refer to individual hardware for material and finish.



**Laurel Wreath Pull  
(H21)**  
W 2.5 H 2.5  
*Shown in Brushed Nickel*



**Cassanova Pull  
(H22)**  
W 2.5 H 2.5  
*Shown in Antique Bronze*



**Midas Pull  
(H23)**  
W 2 H 2  
*Shown in Brushed Nickel*



**Crystal Pull  
(H24)**  
Diameter 1.75  
*Black Mist Base*



**Michaelangelo Stone Bar  
(H25)**  
W 5.5 H 2  
*Jazz Marble and Aged Brass*



**Cupola Pull  
(H26)**  
Diameter 1.5 H 1.1875  
*Mother of Pearl and  
Polished Stainless Steel*



**Ripple Agate Pull  
(H27)**  
Diameter 3.5 H 1.75  
*Agate and Polished Stainless Steel*



**Donnatello Stone Pull  
(H28)**  
Diameter 1.875 H 1.625  
*Jazz Marble and  
Polished Stainless Steel*



**Vermeer Pendant  
(H29)**  
W 2.5 D 1.1875 H 3.375  
*Mother of Pearl and  
Polished Stainless Steel*



**Derby Pull Horizontal  
(H31)**  
W 7.5 H .625  
*Black Wrapped Leather and  
Brushed Stainless Steel*



**Derby Pull Vertical  
(H32)**  
W .625 H 7.5  
*Black Wrapped Leather and  
Brushed Stainless Steel*



**Deco Pull  
(H33)**  
Diameter 2 H 1.25  
*Jazz Marble*

5

## CHOOSE your PLACE. Select the placement/position of hardware on drawers and doors.



**One Column Centered on Each Drawer (P1)**  
*Shown: Ribbon Drawer Face (F07) in Dove Gray Finish; One Crescent Bail Pull (H16) in Antique Bronze*



**Two Columns Equally Offset from Center on Each Drawer (P2)**  
*(additional charge for this option in both standard and premium hardware)*  
*Shown: Ribbon Drawer Face (F07) in Dove Gray Finish; Two Crescent Bail Pulls (H16) in Antique Bronze*



**One Centered on Each Door (P3)**  
*Shown: Clip Corner Door Face (F03) in Harrison Gray  
Finish; One Lion's Head Pull (H13) in Brushed Nickel*



**One Centered on Inner Edge  
of Each Door (P4)**  
*Shown: Corduroy Door Face (F09) in Barrington  
Finish; One Narmaste Pull (H03) in Satin Brass*

6 CHOOSE *your* FINISH. ADD AN OPTIONAL CUSTOM EMBELLISHMENT.

Select from hundreds of finishes — standard stain, paint or metallic paint finish, MIY paint, artisan wood finish or premium leaf finish. You can even make it a combination finish with contrasting drawers, doors, tops, end panels or face styles (\*note that certain face styles can only take a paint finish). Make a bold statement with high contrast choices, or go for an understated look with tone-on-tone or low contrasting personalized finish options.

Customize your piece even further by adding an optional embellishment such as highlight striping, pattern striping, shadowing (*on select finishes*), sheen level option or distressing level. \*Optional charges may apply.

70+  
FINISH  
OPTIONS

GET CREATIVE AND *make it yours!*



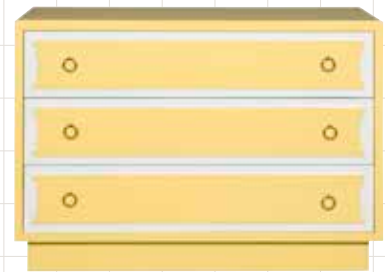
**MCKINNEY**  
CC03 Side Table

Base: Metal Tube Leg (G) in Satin Brass. Face: Greek Key (F08).  
Hardware: Small Wallace Pull (H05) in Satin Brass/  
One Column Centered (P1). Finish: Wrenn.



**MANNING**  
CC05 Side Table

Base: Tapered Leg (A). Face: Clip Corner (F03).  
Hardware: Lion's Head (H13) in Brushed Nickel/  
One Centered (P3). Finish: Harrison Gray with  
optional Highlight Striping in Platinum Metallic.



**PROSSER**

CC06 Drawer Chest

Base: Plinth Base (D). Face: Ribbon (F07).  
Hardware: Small Ring (H10) in Satin Brass/Two Column Offset (P2).  
Combination Finish: Pure White (outside of drawer design);  
MIY Paint, Pristine Flat in Sherwin Williams June Day SW 6682.

Explore a world of possibilities  
in one easy online visualizer at  
[vanguardfurniture.com/pages/miybedroom](http://vanguardfurniture.com/pages/miybedroom).

To see more examples of what is possible, visit our community Pinterest page at  
[pinterest.com/vanguardfurn/make-it-yours-bedroom](http://pinterest.com/vanguardfurn/make-it-yours-bedroom). We encourage you to post here too!



VANGUARD®  
FURNITURE

WWW.VANGUARDFURNITURE.COM

04.4.18