

Adopt-A-Tree

Nearly 67% of Bayside is covered by tree canopy, which ranks Bayside fifth in the State. Emerald Ash Borer (EAB) is an invasive beetle spreading throughout Wisconsin and threatening our ash trees. While the Village was officially infected in March 2016 with EAB, the impacts have become much more pronounced in the past year. To maintain a diverse and resilient urban forest, the Village has:

1. Implemented the Adopt-A-Tree Program.
2. Created a 5% maximum species threshold to diversify the tree population.
3. Completed and maintained a tree inventory by a certified arborist.
4. Removed worst-rated trees based on tree inventory.
5. Removed invasive species and trimmed hazard trees.



Option 1:

PUBLIC RIGHT OF WAY TREES:

\$160

INCLUDES:

- **1 TREE**
- **PLANTING
IN RIGHT-
OF-WAY**
- **MULCHING**
- **INITIAL
WATERING**

Option 2:

PRIVATE PROPERTY TREES:

\$200

INCLUDES:

- **1 TREE**

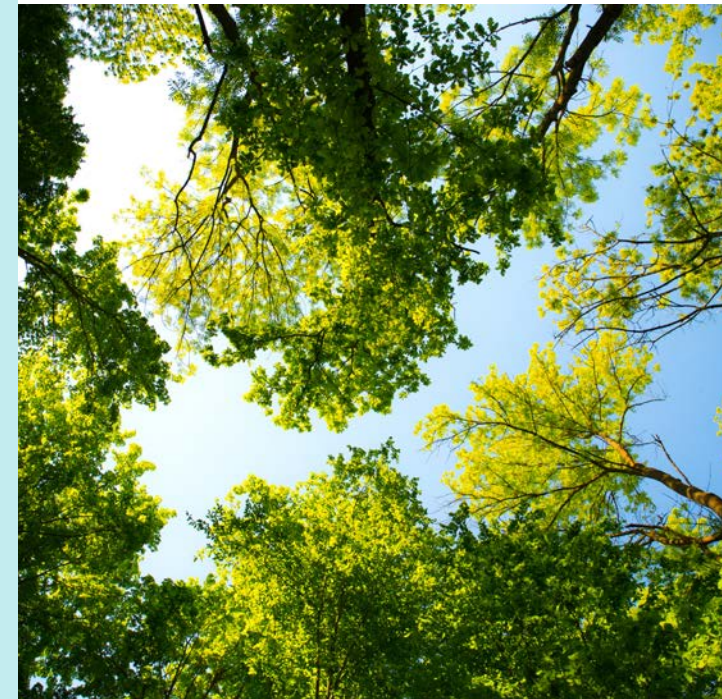
*TREES DO NOT HAVE A WARRANTY
AND SUBJECT TO AVAILABILITY

Benefits

- Provides shade
- Reduces air and noise pollution
- Conserves water
- Reduces soil erosion
- Creates wildlife and plant diversity

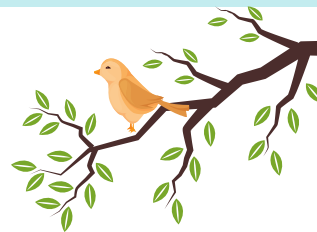


TREE CITY USA



More Info

For more information, please
visit www.baysidewi.gov or
call 414-206-3915.



Turkish Filbert



FAST FACTS:

- 40-60 FEET TALL AT MATURITY
- 25-35 FEET WIDE AT MATURITY
- LEAVES DARK GREEN IN SUMMER AND YELLOW IN FALL
- SLOW GROWTH RATE

2022 TREE OPTIONS!

Katsura



FAST FACTS:

- 40-60 FEET TALL AT MATURITY
- 35-60 FEET WIDE AT MATURITY
- LEAVES TURN A SHOWY YELLOW AND RED IN FALL

Greenspire Linden



FAST FACTS:

- 40-60 FEET TALL AT MATURITY
- 35-50 FEET WIDE AT MATURITY
- YELLOW LEAVES IN THE FALL
- FAST GROWTH RATE

Spring Snow Crabapple



FAST FACTS:

- 20-30 FEET TALL AT MATURITY
- 15-20 FEET WIDE AT MATURITY
- WHITE BLOSSOMS IN SPRING, GREEN LEAVES IN SUMMER, YELLOW LEAVES IN FALL
- NO FRUIT!