

Geology Historical Markers in Belhaven

David T. Dockery III, RPG



In the March 2017 meeting of the Mississippi Geological Society (MGS), Eleana Turner Pope, a former MDEQ employee and now Secretary of the Belhaven Improvement Association (BIA), asked the Society to sponsor two geology historical markers for the Belhaven area in Jackson. MGS officers voted to do so at the cost of \$2,000 per marker—one marker for the Jackson Volcano and one for the Moodys Branch Formation. The Belhaven Neighborhood is near the apex of the Jackson Dome and the ancient volcanic vent at its core. It also contains the type locality of the [Moodys Branch Formation](#), a formation famous for its marine fossils, at a site on Moodys Branch near the intersection of Poplar and Peachtree streets. Belhaven itself is a historic district described on Wikipedia as “one of Jackson's oldest neighborhoods and cultural centers as well as home to many of the city's oldest homes and buildings” and “is considered to be one of the most architecturally diverse neighborhoods in the United States.” The verbiage for Belhaven's geologic markers were reviewed by the Mississippi Department of Archives and History and myself. Recently, I met with Eleana and BIA President Dr. Reed B. Hogan, III, to present a check from the Mississippi Geological Society and to determine the best location to place the markers along the neighborhood's future Historical Trail.



Figure 1. Top, Dr. Reed Hogan and Eleana Pope with markers, middle, *The Jackson Volcano* and *Moodys Branch Formation* markers, bottom, David Dockery hands Eleana Pope an MGS check for marker cost \$4,000.

The Jackson Volcano marker has been erected in Belhaven Park while a location for the Moodys Branch Formation marker has not yet been determined. Pictured in Figure 2 with the marker are Casey Creasey, Executive Director of Greater Belhaven Foundation, and Reed Hogan. The other photos (Figure 3 and Figure 4) provide a broader view of the marker's location in the park and a Google satellite map to help locate the marker.

These two geologic historic markers will bring additional attention for the public to the scientific significance of this important area including the buried volcano, the regional uplift that created the Jackson Dome, and the exposure of the Moodys Branch Formation at the dome's crest.



Figure 2. Standing beside *The Jackson Volcano* historic marker is Casey Creasey, Executive Director of Greater Belhaven Foundation and Dr. Reed Hogan, President of the Belhaven Improvement Association.



Figure 3. Top, James Matheny inside the Belhaven Park east gate, bottom, David Dockery sitting in the "hot seat," the bench in front of *The Jackson Volcano* historic marker.

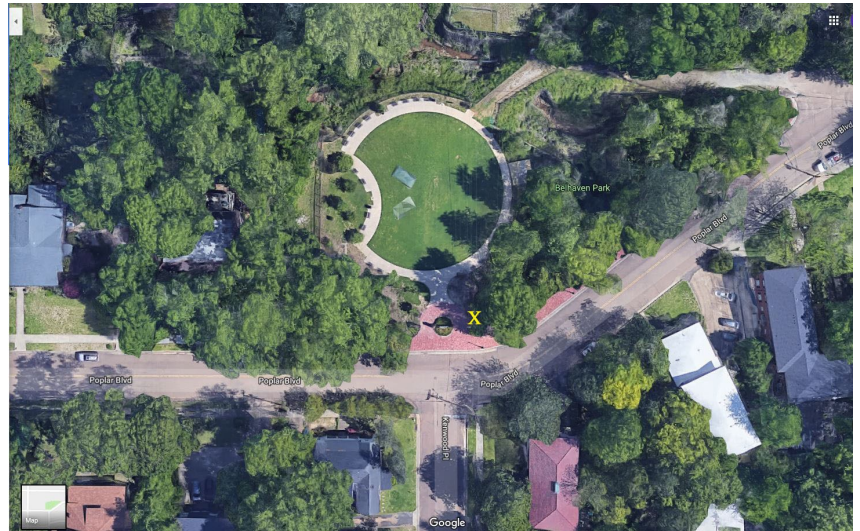


Figure 4. Yellow X marks the spot of *The Jackson Volcano* historic marker inside the east gate of Belhaven Park on Poplar Boulevard.