

Market trends 2025

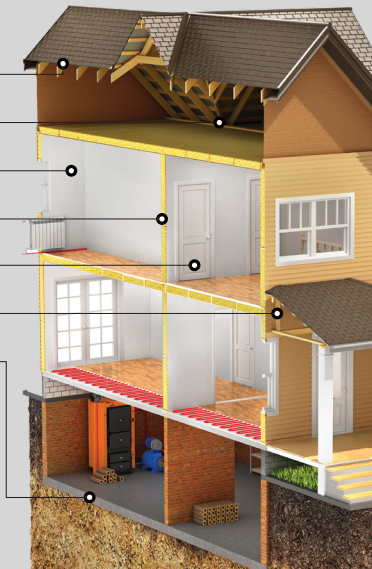
Explore a summary of the headline themes impacting successful families and individuals in 2025.



HOME

- Labor remains the biggest challenge in residential construction. At the end of 2024 residential building worker wage growth hit a 9.9% increase year-over-year.¹
- Material costs remained relatively stable.²

+3.6%	Asphalt roofing
+4.3%	Wood cabinetry
+1%	Paint
+2%	Dry wall
+2%	Windows and doors
+2%	Wood siding and trim
+5.5%	Concrete products

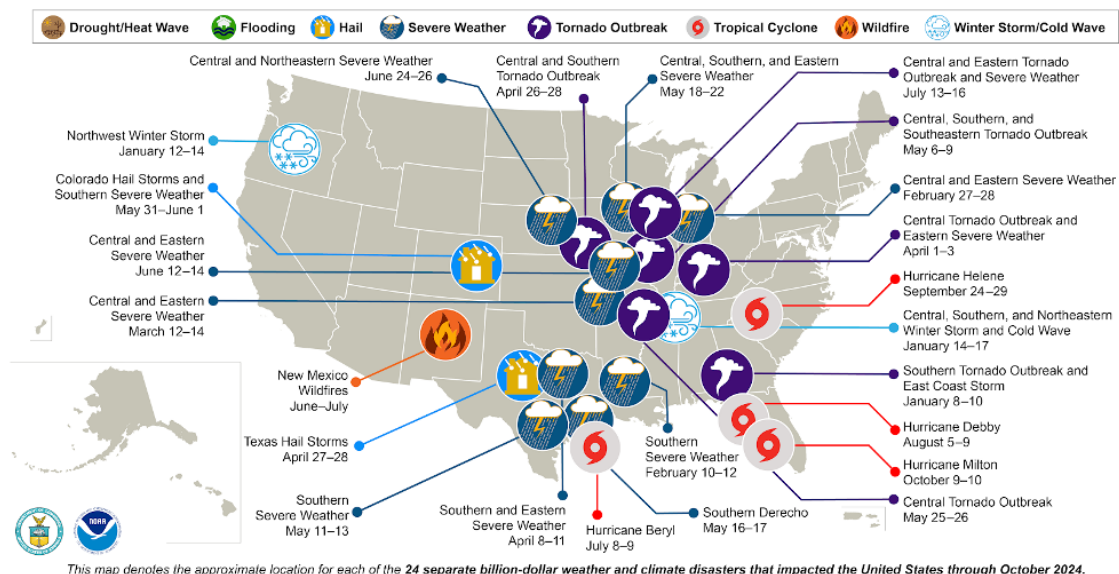


AUTO

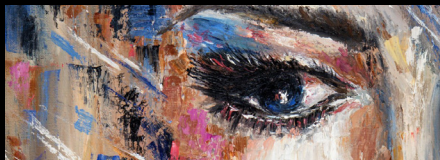
- The complexities of building new vehicles have increased. Safety and convenience features improve the driving experience and reduce crash potential but also make vehicle construction more complex, and repairs more challenging and costly.³
- Auto labor repair rates have increased 4.9% from 2023.³



Another record-breaking year for billion-dollar disasters⁴

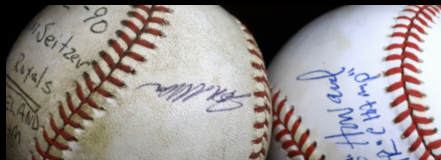


What's shaping collections?



Art

We expect to see a continued focus on collecting established artists, and continued growth of contemporary art as the leading market segment, as younger collectors buy the art of their time.



Sports memorabilia

New collectors are drawn by both investment potential and sentimental value. Forecasts predict the segment to grow from \$33.6 billion in 2024 to a staggering \$271.2 billion by 2034.⁵



Jewelry and collections

By 2030, Gen Z will account for 25-30% of luxury market purchases, while millennials will account for 50-55%. Jewelry and watches still represent more than 80% of the total market.⁶

¹ Fu, Jing. "Residential Building Wages Grow at Unprecedented Rate", National Association of Home Builders November 4, 2024

² U.S. Bureau of Labor Statistics Monthly Pricing Indexes

³ CCC Intelligent Solutions Inc. Crash Course 2023

⁴ NOAA National Centers for Environmental Information (NCEI) U.S. Billion-Dollar Weather and Climate Disasters (2024).

⁵ Aisenberg, Jeremy. "The Future of Collectibles: Sports Memorabilia Market to Hit \$271 Billion by 2034", Sports Illustrated, Dec 18, 2024

⁶ D'Arpizio, Claudia; Levato, Federica; Steiner Andrea and de Monfolfier, Joelle. "Long Live Luxury: Converge to expand through Turbulence", Bain, January 2024