

2020: A Record Breaking Hurricane Season



Daniel Noah

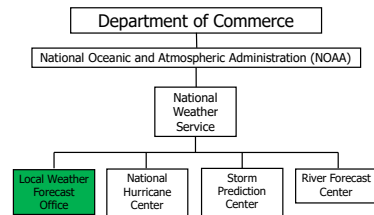
Warning Coordination Meteorologist
National Weather Service – Tampa Bay Area
daniel.noah@noaa.gov

<https://weather.gov/tampa>
<https://radar.weather.gov>
<https://weather.gov/forecastpoints>



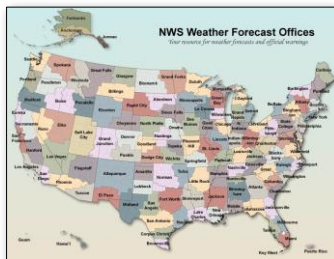
1/13/2021 weather.gov/tampa 1

We are a Federal Government Agency



1/13/2021 weather.gov/tampa 2

122 NWS Local Weather Forecast Offices



- 23 Employees
- 17 are Meteorologists
- 24 hours a day
- 365 days a year



1/13/2021 weather.gov/tampa 3

We Issue the Weather Warnings You Hear on Radio/TV



1/13/2021 weather.gov/tampa 4

Members of the Integrated Warning Team



Emergency
Management
and Public
Officials



National
Weather
Service



America's Weather
and Climate Industry
(e.g. TV, Radio, Newspaper,
Media, Private Companies,
& App Developers)

1/13/2021 weather.gov/tampa 5

Does the NWS Have an App?

Have multiple ways to receive a weather warning

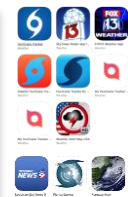


AlertFlorida.com



weather.gov/tampa

Commercial Apps



1/13/2021 weather.gov/tampa 6

Florida Hurricanes



1/13/2021 weather.gov/tampa 7

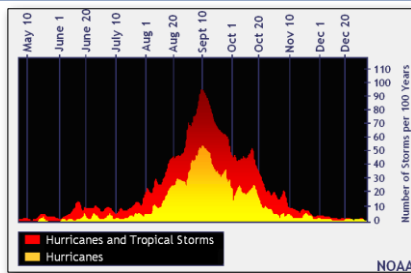


The Top Five Costliest U.S. Hurricanes on Record



1/13/2021 weather.gov/tampa 8

Hurricanes in the Atlantic Basin



1/13/2021 weather.gov/tampa 9

Remember when 2005 Hurricane Season Ran Out of Names



28 Named Storms (normal is 12)
 15 Hurricanes
 7 Major Hurricanes

Began June 8, 2005
 Ended January 6, 2006

Ran out of names and used 6 Greek letters
 • Alpha, Beta, Gamma, Delta, Epsilon, Zeta

1/13/2021 weather.gov/tampa 10

2020 Hurricane Season

Arthur	Gonzalo	Marco	Teddy
Bertha	Hanna	Nana	Vicky
Cristobal	Isaias	Omar	Wilfred
Dolly	Josephine	Paulette	
Edouard	Kyle	Rene	
Fay	Laura	Sally	

No names for Q, U, X, Y, or Z

1/13/2021 weather.gov/tampa 11

2020 Hurricane Season Greek Alphabet Names

Alpha	Eta	Nu	Tau
Beta	Theta	Xi	Upsilon
Gamma	Iota	Omicron	Phi
Delta	Kappa	Pi	Chi
Epsilon	Lambda	Rho	Psi
Zeta	Mu	Sigma	Omega

1/13/2021 weather.gov/tampa 12

2020 Hurricane Season

30 Named Storms
13 Hurricanes
6 Major Hurricanes
Began May 16, 2020



1/13/2021

weather.gov/tampa

13

Entire Gulf/East Coast was in a Tropical Watch/Warn in 2021



1/13/2021

weather.gov/tampa

14

Hurricane Season Started on May 16, 2020



1/13/2021

weather.gov/tampa

15

September 20, 2020

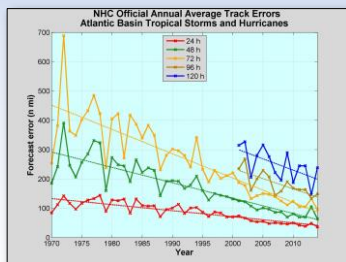


1/13/2021

weather.gov/tampa

16

Hurricane Forecasting



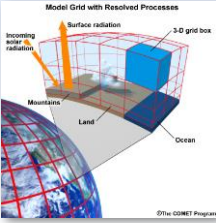
Advances in Technology



Everything in this Ad from the 80s can now be down with a single smart phone



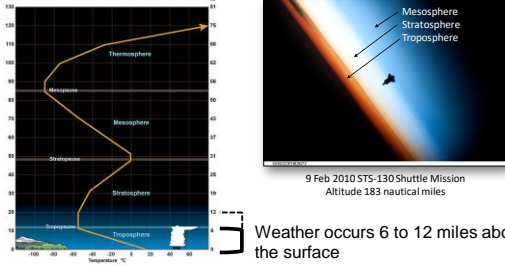
Computer Simulation (Model)



Dynamic Models solve equations that govern the atmosphere/ocean

- Global Models
 - GFS – U.S. Global Forecast System
 - ECMWF - European Center for Medium-range Weather Forecasting
 - UKMET - United Kingdom METeorological
- Small Scale Models
 - NAM – North American Model
 - RAP – Rapid Refresh Model

Layers of the Atmosphere




Weather occurs 6 to 12 miles above the surface

1/13/2021 weather.gov/tampa 25

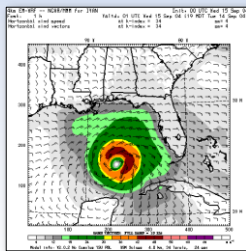
NWS Supercomputers

1 petaFLOPS = quadrillion (thousand trillion) FLOating Operations Per Second




- 2005: NWS 0.0005 petaFLOPS
- 2013: Sony Play Station 4
 - GPU 0.0002 petaFLOPS
- 2009: 1st petaflop computer
- 2014: NWS 0.4 petaFLOPS
- 2018: NWS 8.4 petaFLOPS
 - 393,216 CPU cores
 - 2018 U.S. Dept of Energy
 - 180 petaFLOPS

NWS Supercomputer




Allows atmospheric simulations that have higher resolution in both time and space

Review of the Hurricane Forecast Cone



1/13/2021 weather.gov/tampa 29

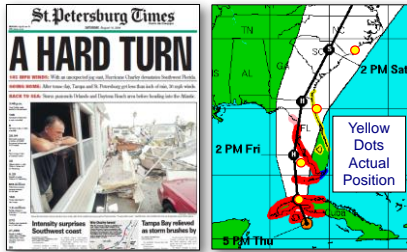
What Does the Cone Mean?



The cone is where the center of the Hurricane is likely to be

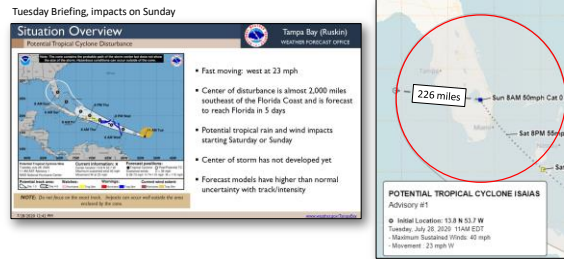
1/13/2021 weather.gov/tampa 30

2004 Hurricane Charley: Perception is Reality



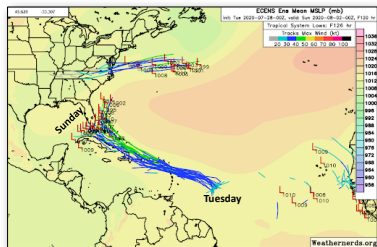
1/13/2021 weather.gov/tampa 31

Hurricane Isaias



1/13/2021 weather.gov/tampa 32

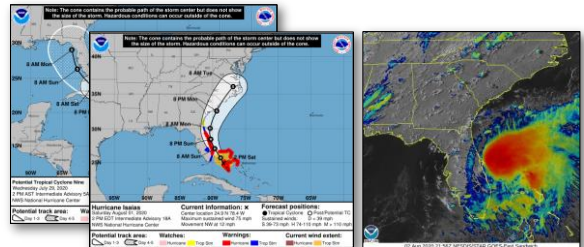
European Ensemble Model – Tropical Cyclone Isaias



- Model run numerous times with data put into model differently each time
- Started on Tuesday, ended on Sunday
- High uncertainty on track forecast

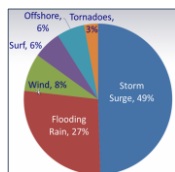
1/13/2021 weather.gov/tampa 33

Hurricane Isaias



1/13/2021 weather.gov/tampa 34

When you close your eyes, what do you see when you think of a hurricane?



9 out of 10 U.S. tropical cyclone fatalities are due to water

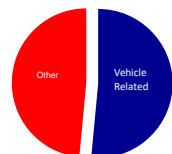
1/13/2021 weather.gov/tampa 35

2016-2018 Water Continues to Kill

During the past three seasons, more than half the U.S. tropical cyclone water-related fatalities were vehicle related!

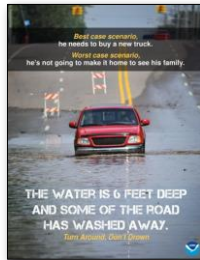
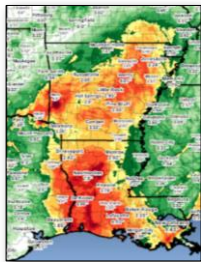


2016-18 U.S. Tropical Cyclone Water Related Fatalities



1/13/2021 weather.gov/tampa 37

Flooding rains from Major Hurricane Laura



Fast Fact

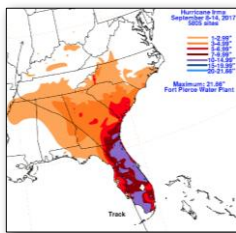


Flood Insurance is required on your mortgage if your home is in a 1-in-100 year flood plain

That is a 1% chance each year

That is a 26% chance over a 30-year mortgage (don't ask me how they did the math)

2017 Hurricane Irma Rain and Flooding

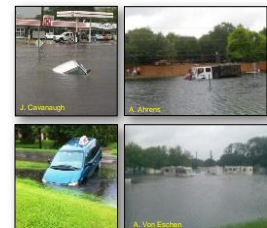


Flooding from Heavy Rain is Dangerous

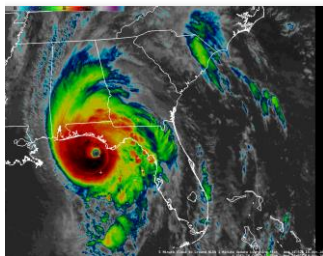
2016 Hurricane Matthew
North Carolina



2012 Tropical Storm Debby
Pinellas County

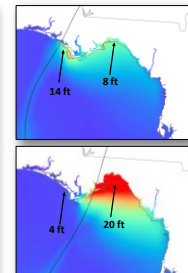
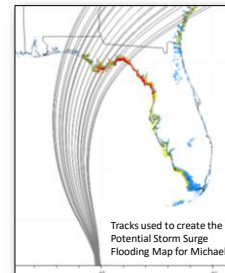


2018 Major Hurricane Michael

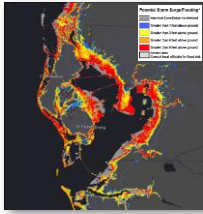


- CAT 5 with 160 mph wind
- Surge, tide, and waves reached 19 feet at Mexico Beach
- At least 59 people killed in the United States
- 4th CAT 5 to hit the United States

100s of Surge Forecasts Varying Size, Intensity, & Speed



Potential Storm Surge Flooding Map if Michael Hit Tampa



Does not show what is expected, this map shows a reasonable worst case scenario (10% chance)

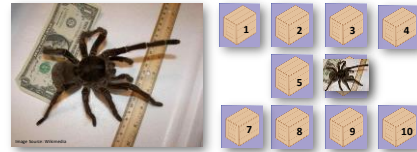
10% of the time the surge will be higher than what is shown

90% of the time the surge will be lower

1/13/2021 weather.gov/tampa 44

Visualizing a 10% Chance

This spider is inside one of ten boxes.
Pick a box and stick your hand in it.



1/13/2021 weather.gov/tampa 45

Cameron, LA – 2020 Hurricane Laura



1/13/2021 weather.gov/tampa 46

Unsurvivable Storm Surge



1/13/2021 weather.gov/tampa 47

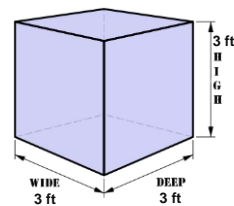
Storm Surge Mexico Beach, FL on 10/10/2017



Instagram.com/talarico.tessa

1/13/2021 weather.gov/tampa 48

Water is Heavy, Moving Water can be Deadly



1 cubic yard of water weighs 1,700 pounds!

1/13/2021 weather.gov/tampa 49

Every Red Dot on Map is a Home Washed Off Foundation



1/13/2021 weather.gov/tampa 50

On the Ground in Mexico Beach



1/13/2021 weather.gov/tampa 51

Mexico Beach Storm Surge Debris



1/13/2021 weather.gov/tampa 52

Public Risk Perception is Based on Previous Experience

- "My house is elevated, I thought we would be just fine"
- "It's never flooded here before"
- "They always turn"
- "I didn't know it would be this bad, I'll never stay again"
- "This wasn't that bad, I'll never leave again"

1/13/2021 weather.gov/tampa 53

Storm Surge Created a New Pass



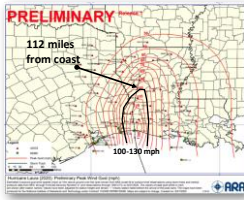
1/13/2021 weather.gov/tampa 54

Our Barrier Islands are no Different



1/13/2021 weather.gov/tampa 56

Major Hurricane Laura Wind



- Major Hurricane Laura made landfall at approximately 1:00 am CDT on 27 Aug 2020 with maximum sustained winds of 150 mph. For comparison, Katrina's winds at landfall were 125 mph.
- This is at the higher end of **Category 4** on the Saffir-Simpson scale (130-156 mph).
- Hurricane Laura tied the Last Island hurricane (1856) for the strongest landfalling hurricane in Louisiana on record. This makes it the strongest hurricane to hit Louisiana in 164 years.
- Laura is tied for the fifth-strongest storm (in terms of wind speed at landfall) to hit the Continental United States.
- Its central barometric pressure at landfall was 938 millibars (27.699 inches of mercury), making it the fourth strongest hurricane to hit anywhere on the Louisiana coastline.
- Laura is the only Category 4 or 5 hurricane to make landfall in SW Louisiana.

Fast Fact

One inch of rain over one square mile

- 17 million gallons of water
- 145 million pounds

This is a lot of weight being held aloft by the storm updraft

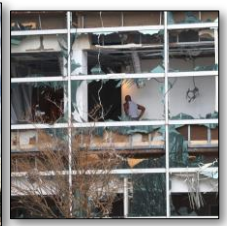


Non-Severe Thunderstorm Downdraft in Tampa



Lake Charles, LA

31 miles from the Gulf Coast



Chemical Fire in Lake Charles



NWS Lake Charles

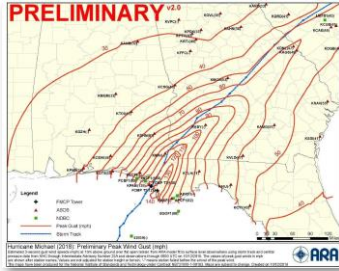


NWS Lake Charles evacuated ahead of storm

Two employees lost their homes

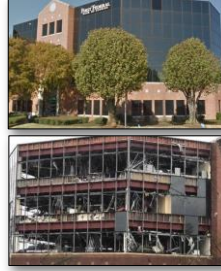
Radar knocked out

2018 Hurricane Michael Wind Field



CAT 3, 115+ MPH winds went all the way into southwest Georgia

2018 Hurricane Michael Wind



The damage is not just from wind, but is from the weight of the water in the wind moving at that wind speed

Sustained winds don't cause as much damage as gusty wind which pounds on structures

1/13/2021 weather.gov/tampa 65

2018 Hurricane Michael Wind



Trees snapped in half in large sections of forest



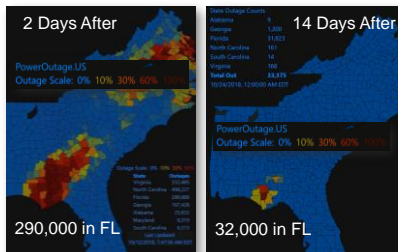
1/13/2021 weather.gov/tampa 66

Hurricane Michael Power Outages



1/13/2021 weather.gov/tampa 67

Hurricane Michael Power Outages



Evacuations are Called for One of Two Reasons

1. Live in the storm surge zone

2. Live in manufactured home



Hurricane Charley – 2004
 Motorists fleeing Pinellas County on the
 Howard Franklin Bridge



Hurricane Charley – 2004
 Punta Gorda area

1/13/2021 weather.gov/tampa 69

Evacuations can be a Problem

Evacuate 10s of miles, not 100s of miles



Motorists trapped on I-26 as Hurricane Floyd approached Charleston, SC in 1999



Houston as Hurricane Rita approached in 2004

The Five Most Difficult Hurricane Evacuation Areas in U.S.

According to Donald Lewis, VP of ATKINS at the 2012 National Hurricane Conference

5. Southeast Florida
4. New York City / New Jersey Coast
3. Delmarva Peninsula (DE, MD, VA)
2. Tampa Bay Area, FL
1. Southwest Florida

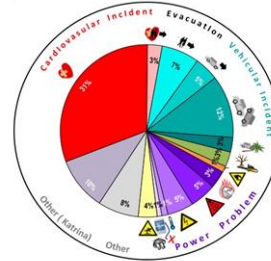
2017 Hurricane Irma Caused Largest Florida Evacuation

About 6 million Floridians evacuated



Nexusnewsfeed.com

Surviving the Aftermath of a Hurricane



Most frequent factors in Fatalities After the Storm:

- Cardiovascular
- Electricity
- Vehicle accident
- Evacuation

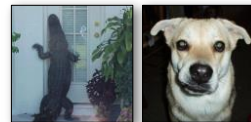
Survive the Aftermath of a Hurricane



Disease Outbreaks

- From Contaminated Water – sewage release
- From Contaminated or Spoiled Food
 - Loss of Power = Improper Refrigeration
 - Danger Zone between 40F and 140F
 - Potentially Hazardous Foods in as little as 4 hours

Survive the Aftermath of a Hurricane



- Displaced wild animals
 - Snakes, spiders, bears, fire ants
 - Abandoned domestic animals can form into packs and they are scared and hungry



Surviving the Aftermath of a Hurricane



- Fires & Electrocutation
 - Downed power lines
 - Water intrusion into electrical systems
 - Increased use of generators
- Carbon Monoxide Poisoning
 - Improper generator use
 - Running in garage or house
 - Underneath open window

1/13/2021 weather.gov/tampa 76

Stress Can Kill



- Physical Stress
 - Temperature & Humidity
 - Diet Changes
 - Unusual Activities
 - Long Hours / Lack of Sleep
- Emotional Stress
 - Loss & Grief
 - Depression
 - Anger
 - Post Traumatic Stress Disorder

1/13/2021 weather.gov/tampa 77

What can you do?



1/13/2021 weather.gov/tampa 91

1/13/2021 weather.gov/tampa 92

Become an Ambassador!

Sign up for your group at [weather.gov/wrn](https://www.weather.gov/wrn)

An Ambassador receives an Email about once a month with preparedness resources

1. Knowledge at Your Fingertips – Useful safety information will keep you safe when dangerous weather strikes.
2. Peer Influence – Your peers will follow your example during dangerous weather events, keeping them safe.

Some of the 212 Ambassadors in West Central Florida

- Hillsborough ARES/RACES
- TECO Energy
- Fox 13 WTVT-TV Tampa Bay
- Tampa International Airport
- St Pete Astronomy Club
- U.S. Central Command
- Ellenton Premium Outlets
- Frontier Communications
- University of South Florida

1/13/2021 weather.gov/tampa 93

Examples of Ambassador Resources



1/13/2021 weather.gov/tampa 94

Ambassador Resources – Social Media Plans

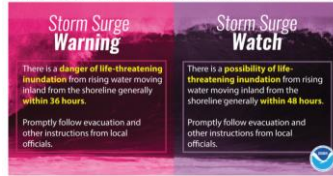
Storm Surge Watch vs. Warning

Facebook

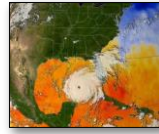
Do you know the difference between a Storm Surge Warning and a Storm Surge Watch? A Storm Surge Warning means there is a danger of life-threatening flooding within the next 36 hours. A Storm Surge Watch means there is a possibility of life-threatening flooding within the next 48 hours. In either case, please promptly follow evacuation and other instructions from local officials. Visit weather.gov/hurricaneinfo for more hurricane safety tips.

Twitter

Do you know the difference between a Storm Surge Warning and Watch? Visit weather.gov/hurricaneinfo for more tips.



Questions or Comments?



<https://weather.gov/tampa>
<https://radar.weather.gov>
<https://weather.gov/forecastpoints>
<https://weather.gov/wrn>

