



# ITEM LIMITS

Spring 2026

10/1/25

## BOYS AND GIRLS SIZES - 2 LIMITS

**PREEMIE TO 3M = 15 TAGS | 6M TO 12M = 50 TAGS**

Limit of three (3) gently used items per hanger. Exception: FULL outfits can be listed under 1 tag and go on one hanger. Onesies must be in groups of 3. Infant hangers are allowed for these sizes.

**15 & 50 TAGS**  
SEE SIZES TO LEFT  
EACH GENDER

## GIRLS OR BOYS JUNIORS SIZES (XS - XL+) TEEN/JUNIOR BRANDS\*

\*THERE ARE LIMITED AND UNLIMITED ITEMS - SEE TEEN GUIDE

Will be sorted by type of clothing, this section only.

**SEE TEEN GUIDE**

## MATERNITY XS-XL

**ALL TAGS MUST BE MARKED REDUCE/DONATE**

**10 TAGS**

## GIRLS SIZE 10 OR 10/12

**NEW: THIS LIMIT IS NEW FOR THIS SIZE ONLY**

**25 TAGS**

## BAGS/BACKPACKS

**NEW: MUST BE FOR A CHILD - NO ADULT**

**NO ADULT**

## STUFFED ANIMALS

**NEW: MUST BE MARKED REDUCE AND DONATE**

**5 STUFFIES**

## MOMMY / DADDY MART

(exception: 10 gently used Mommy/Daddy Mart tagged items accepted and 10 gently used holiday/seasonal tags)

**NEW/ NEW IN BOX+ NO LIMIT**

## BOYS & GIRLS ACCESSORIES

**Season specific only!**

**20 total tags regardless of gender.**

**20 TAGS**

## BOOKS:

LIMITED TO 100 KIDS' BOOK TAGS

**NOT ALLOWED: PREGNANCY/PARENTING ADULT FOCUSED LIKE COOKING, FICTION, NON-FICTION, ETC**

**100 TAGS**

## DVDS: NEW: MUST BE MARKED REDUCE AND DONATE

\*ONLY CHILD FRIENDLY OR FAMILY FRIENDLY DVDS

**SEE NOTE**

# FINE PRINT

Spring 26

## THE WHY BEHIND...



10/1/25

### INFANT LIMITS - 15 + 50 TAGS/GENDER **15 & 50 TAGS**

Babies grow so fast! The inventory is HUGE in this area and you need to bring your best for it to sell. This limit gives us space on the racks and inventory your buyers want. You will sell more!!

SEE SIZES TO  
LEFT  
EACH GENDER

### TEEN BRANDS / STYLES

Our data shows if you bring styles or brands they love and price them well, they will sell. We will pull out any item we feel does not meet teen styles or brands. Any teen item found in kids 14/16/18 will be pulled and scanned.

SEE  
TEEN  
GUIDE

### ITEMS FREE OR NOT FOR RESALE

We do not allow items on the floor that were given away for free or marked "not for resale." This includes non-profit giveaways, Imagination Library books, product samples, etc.

**0**  
TAGS

### MATERNITY XS-XL+

This area has a low sell-through rate, especially when the prices are high. We know this area helps our buyers, so we want you to bring only your best, current and up-to-date items. They must be marked reduce/donate.

**10**  
TAGS

### ROOM DECOR **Must Mark Reduce**

Our sale is for kids - items are for their rooms only. Every item must be VERY CLEAR that it was designed for a kid's room. ANYTHING outside this scope needs to go in Mommy/Daddy Mart & abide by those restrictions.

**KID  
ONLY**

### MOMMY / DADDY MART

Think re-gifting items and the spirit of this section is new or like new only. Personal care must be factory sealed. Holiday items should be for just the next 6 months. **All items Must be Marked Reduce.**

**NEW/  
NEW IN  
BOX+  
NO LIMIT**

### BOYS & GIRLS ACCESSORIES

Best practice is to use ziptop bags for multiples. Undies MUST be NEW. Socks should be wear/stain free. Any one item in the bag not meeting standards means the whole bag is pulled.

**20**  
TAGS

### BOOKS NO ADULT-BASED BOOKS

We are saving space for children's books (Limit 100 tags) - the sell through rate for pregnancy, parenting, adult fiction, non-fiction, cooking, etc was low and we are saving the space for books geared towards kids.

**0**  
TAGS

Spring 26

## TEEN CLOTHING LIMITS

10/1/25

## Junior Girls &amp; Junior Boys

ALL SIZES (XS-XL) ARE ACCEPTABLE  
FOR TEEN BRANDS  
MUST BE SEASON SPECIFIC

## UNLIMITED ITEMS

The logos/brands on this side are unlimited.  
These brands do not fall under a number of  
tags limit for the teen section but they MUST  
be in the best quality and priced  
appropriately to sell at JBF.

Abercrombie & Fitch	Ivory Ella
Aerie	Lululemon
Alo	Madewell
American Eagle	Nike
Athleta	North Face
Carhartt	Patagonia
Free People	Simply Southern
Gymshark	Vineyard Vines
HellyHansen	Vuori
Hollister	Zara



## LIMITED TO 20 TAGS

## PER GENDER

The logos/brands on this side are a  
**suggested** list of logo/brands but not all-  
inclusive. Bring your best 20 tags for boys  
and best 20 tags for girls.



## CLOTHING WE WILL NOT CURRENTLY ACCEPT:

We will NOT ACCEPT clothing designed and marketed for adult women or adult men. Just because your teen wore it, that does not mean that JBF will automatically accept it for resale. Your clothing inspector will use their discretion to give a final decision.

NOTE: Youth Sizes 14/16/18 stay in the youth section and there are no limits on those sizes.



Spring 26



## CLOTHING DETAILS

**"NO THANK YOU" BRANDS**

IN AN EFFORT TO BRING MORE QUALITY AND VARIETY TO THE TEEN SHOPPING, WE HAVE CREATED NEW LIMITS FOR THIS AREA. PLEASE REVIEW BELOW.

**STOP!**

These brands are truly adult clothing brands. Yes, they might have some generic pieces, but the company is for adults, not teens...

**WILL BE PULLED:**

WHITEHOUSEBLACKMARKET

chico's

**SELLER BEWARE**

These stores/brands are on the fence. It needs to be OBVIOUS that the clothing is something a teen would wear.

maurices



meijer



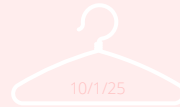
Walmart

**THE FINE PRINT ON NON-JUNIOR'S CLOTHING**

Sellers killed it at the Fall '25 sale with the sell-through rate of Junior's clothing because we stopped or pulled out non-juniors brands/styles. If you were stopped and got to bring it home, that's good-but you still used your time and supplies to get it there. If it was pulled, you were charged after your grace of ANY 3 items being pulled. Don't take the risk with clearly obvious adult clothing-donate it instead!



Spring 26



## PREPPING FOR DROP OFF

Make 2 Groups, See Page 2

### Come Prepared!

Keep your "unlimited" tags in one group, and your "20 best" in another. Each grouping will be inspected at Drop Off and then you will place your items on the racks by size in the teen area. Unsorted teen clothes will need to be sorted before placement.

### Group 1

#### UNLIMITED ITEMS

You may bring as much as you want with these brands. Sorted by type, see Pg 2.

Abercrombie & Fitch	Ivory Ella
Aerie	Lululemon
Alo	Madewell
American Eagle	Nike
Athleta	North Face
Carhartt	Patagonia
Free People	Simply Southern
Gymshark	Vineyard Vines
HellyHansen	Vuori
Hollister	Zara



### Group 2

#### LIMITED TO 20 TAGS

20 per gender. These logos are suggestions for clothing teens are after. Select wisely.



**ALL SIZES (XS-XL+) ARE ACCEPTABLE FOR TEEN BRANDS**

**NOTE:** Youth Sizes 14/16/18 stay in the youth section and there are no limits on those sizes.

DO NOT place teen clothing in kids 14/16/18/20 - your items will be pulled and counted towards your pulled item total.



Spring 26

12/15/25

## PREPPING FOR DROP OFF

Make 2 Groups, See Page 1

### Sort Your Clothing

Clothing for this section will be categorized by type. Please see below



*Group 1*

**UNLIMITED ITEMS**

No tag limit for Group 1

**NEW THIS SALE  
FOR TEEN SECTION  
ONLY**

**CLOTHES WILL BE  
HUNG BY TYPE:**

- TOPS
- OUTERWEAR
- BOTTOMS
- SWIM
- DRESSES
- COMPLETE OUTFITS
- PAJAMAS

*Group 2*

**LIMITED TO 20 TAGS**

20 Best for Boys & 20 Best for Girls

Your items will be inspected by the zone team member and, once approved, you will place your items on the sale floor in the respective gender/type.

**ALL SIZES (XS-XL+) ARE ACCEPTABLE FOR TEEN BRANDS**

**NOTE:** Youth Sizes 14/16/18 stay in the youth section and there are no limits on those sizes.

DO NOT place teen clothing in kids 14/16/18/20 - your items will be pulled and counted towards your pulled item total.

GRAND RAPIDS

# HEADS UP! SAME This Spring

Visual changes



## HANGERS FOR CLOTHING

Kids Clothing Sizes  
NB/Preemie - 12M

*Any Hanger*

Kids Clothing Sizes  
18M or larger

*No Infant  
Hangers*



### OK ITEMS (EXCEPTIONS):

NEW WITH TAGS ON MANUFACTURER'S HANGER  
SIZED HANGERS MATCHED TO EXACT SIZE OF GARMENT

### EXAMPLES OF NOT OK ON CLOTHING 18M OR LARGER:

USING AN INFANT HANGER WITH SAFETY PINS  
USING AN INFANT HANGER WITH CLIPS

# TAKE NOTE

Any clothing on an infant hanger that does NOT meet the exceptions  
may be pulled from the floor.



# HEADS UP! SAME This Spring

## Written Changes

### **UPDATED HANGERS FOR CLOTHING - SPRING SALE**

To keep clothing from falling off and maintain tidy aisles, we are now requiring hanger size to match clothing size:



**NB-12M: Any hanger is OK**



**18M & up: No Infant Hangers**

**Not allowed for 18M & up:**

✗ Infant hangers with clips

✗ Infant hangers with safety pins



**Clothes must hang securely without slipping off**



**EXCEPTION - OK ITEMS:**

- **\*\*BRAND NEW ITEMS\*\* WITH TAGS ON THE ORIGINAL MANUFACTURER'S HANGER**
- **\*\*HANGERS THAT MATCH THE EXACT SIZE AND SHAPE\*\* OF THE GARMENT**

**Consignors using incorrect hangers may have items pulled from the sales floor**



# TAKE NOTE





**GRAND RAPIDS**



# **NEW** **Spring '26**

## **INFANT CLOTHING**



**SIZES**  
**PREemie, NEWBORN,**  
**0M, 0-3M**  
**15 TAGS BOYS AND**  
**15 TAGS GIRLS**



**SIZES**  
**3M, 3-6M, 6M, 6-12M**  
**9M, 12M, 12-18M**  
**50 TAGS BOYS AND**  
**50 TAGS GIRLS**

**NEW: ALL ONESIES (WITHOUT PANTS OR**  
**JACKETS) NEED TO BE BUNDLED IN GROUPS OF 3.**  
**NO SINGLE ONESIES - MUST HAVE 3 PER TAG.**

# **NEW LIMITS** **PER GENDER**

**GRAND RAPIDS**

**NEW**

**Spring '26**



**GIRLS SIZE 10 AND 10/12**



**FOR SPRING 2026**

**GIRLS SIZE 10 AND 10/12 IS LIMITED TO 25 TAGS**

**THIS AREA WILL BE A ZONE AND HANGERS WILL BE  
COUNTED.**

**25 TAGS  
GIRLS SZ 10**

**GRAND RAPIDS**

**NEW**

**Spring '26**



## **ADULT SHOES**



**FOR WOMENS SIZE 6+ - NO HEELS OVER 1" INCLUDING WEDGES, BOOTS, SLIDES, ETC. AND NO OVERTLY CLEAR ADULT WOMENS SHOES.**

**MENS SIZE 9+ - NO OUTDATED DRESS SHOES OR SHOES THAT DO NOT LOOK APPROPRIATE FOR A TEEN.**

# **TAKE NOTE**

**GRAND RAPIDS**

**NEW**

**Spring '26**



## **BAGS & BACKPACKS**



**BAGS AND BACKPACKS ARE LIMITED TO THOSE THAT A LITTLE/BIG KID WOULD USE.**

**EXCEPTION: CLUTCH STYLE BAGS FOR HOMECOMING/PROM.**

# **TAKE NOTE**

**GRAND RAPIDS**



# Added Aspect Spring '26

## FORMAL DRESSES



**A SPECIAL FORMAL DRESS SECTION FOR OUR TEEN NIGHT!  
5 ADDITIONAL TAGS FOR FORMAL DRESSES  
(PLUS 20 TAGS FOR JUNIORS GIRLS)**

**MUST BE LESS THAN 5 YEARS OLD  
CURRENT STYLES TEENS WEAR  
PRICED 60-90% OFF RETAIL**

**HANDBAGS FOR FORMAL DRESSES ARE ALLOWED AS THE  
EXCEPTION TO "NO ADULT PURSES" AND WILL GO HERE.**

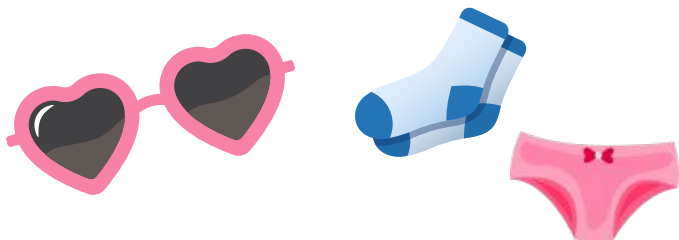
# 5 TAGS

GRAND RAPIDS



# Continuing Spring '26

## LIMITS FOR ACCESSORIES



**THIS AREA IS LIMITED TO 20 TAGS**

**FOCUS ON BRINGING YOUR VERY BEST!**

**ALL UNDERWEAR MUST BE NEW IN PACKAGE. PARTIAL PACKAGES ARE ACCEPTABLE, BUT IT MUST BE VERY CLEAR THAT IT CAME FROM THE MANUFACTURER THAT WAY.**

**ALL SOCKS SHOULD BE STAIN FREE/HOLE FREE.**

**ALL ITEMS NEED TO BE GREAT QUALITY.**

# 20 TAGS

**GRAND RAPIDS**

**New  
Spring '26**



## **KIDS BOOKS**



**BOOKS MUST BE PRICED WELL AND BE IN GOOD CONDITION. NO DAMAGE OF ANY KIND (RIPS, LIQUID, STAINS, SCRIBBLES ETC). NO YELLOWED PAGES. BOOKS THAT REQUIRE BATTERIES MUST WORK PROPERLY. NAMES/INSCRIPTIONS IN FRONT COVER ARE OK.**

# **100 KIDS' BOOK TAGS**

GRAND RAPIDS

# Continuing Spring '26



## **NO ADULT ORIENTED BOOKS**



**WE ARE TOPPING OUT AT OVER 20,000 BOOKS PER SALE SO  
WE ARE SAVING ROOM FOR KIDS BOOKS (NEW: LIMIT 100  
KIDS' BOOK TAGS).**

**NO PREGNANCY, PARENTING, ADULT FICTION OR NON-  
FICTION, ADULT COOKING, SELF HELP, INSPIRATIONAL ETC.**

# 0 BOOKS



GRAND RAPIDS



**NEW**  
**Spring '26**

## **STUFFED ANIMALS**



**THEY ARE BACK AGAIN! TRADITIONAL STUFFED ANIMALS  
WILL BE LIMITED TO 5 TOTAL STUFFED ANIMALS.**

**NEW: MUST BE MARKED  
REDUCE AND DONATE**

**5  
STUFFIES**

**GRAND RAPIDS**



# Continuing Spring '26

## LIMITS FOR HELMETS



**ANY AND ALL HELMETS MUST BE WITHIN 5 YEARS OF PRODUCTION DATE. ADDITIONALLY, DEFECT FREE.**

**THEY MUST HAVE A MANUFACTURING STICKER ON IT TO VALIDATE THE DATE IT WAS CONSTRUCTED.  
ANY HELMET WITHOUT WILL BE PULLED AND COUNTED.**

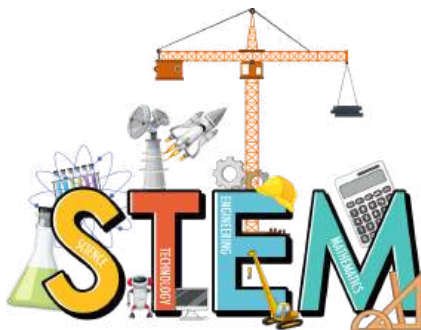
# 5 YEARS

**GRAND RAPIDS**



# CONTINUING Spring '26

## STEM/STEAM & SENSORY SECTION



IT IS OUR JOY TO PUT INTENTIONAL FOCUS ON ITEMS IN STEM/STEAM AND SENSORY. WE WILL HAVE A COMPLETE SECTION FOR THIS - TOYS, ADAPTIVE EQUIPMENT AND MORE. IT SHOULD STILL REMAIN WELL PRICED AND IN GREAT CONDITION.

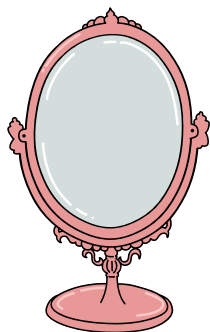
# UNLIMITED TAGS

GRAND RAPIDS



# Continuing Spring '26

## MIRRORS, GLASS FRAMES & NO-GLASS FRAMES



**NO FRAMES WITH GLASS IN IT - THIS INCLUDES ARTWORK, ANYTHING FOR A KIDS ROOM, OR ANY TYPE OF MIRROR. ADDITIONALLY, WE ARE STILL NOT ABLE TO ALLOW ANY PICTURE FRAMES, EVEN THE "CLIP THE PHOTO" KIND OR ACRYLIC. WE ARE NOT ABLE TO ACCEPT ANY MIRROR.**

# 0 FRAMES

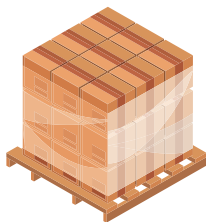
GRAND RAPIDS

# Items from Pallets Spring '26



***new!***

## LIMIT - 5 TOTAL TAGS PER CATEGORY PER SIZE



### **SAME OR SIMILAR ITEMS COUNT AS ONE ITEM**

Color, character, packaging, or minor variations do not count as different items

#### **Examples**

- 5 girls 3T shirts allowed
- 25 girls 3T shirts in different colors not allowed
- 5 of the same toy, craft kit, or party pack allowed

#### **Table Items:** Limit 5 total tags per category

Variations of characters or packaging count as the same item

**Note:** Items from pallets deemed outside the scope of the sale or overpriced will be removed

# NOTE LIMITS

GRAND RAPIDS

# Continuing Spring '26



## SELLING FREE OR NOT FOR RESALE



**ITEMS THAT WERE PART OF A PROMOTIONAL GIVEAWAY, FROM A NON PROFIT, AND/OR MARKED 'NOT FOR RESALE' MAY NOT BE SOLD. THIS INCLUDES BUT IS NOT LIMITED TO BOOKS, FORMULA, CLOTHING, ACCESSORIES, GIVEAWAYS, ETC.**

# 0 TAGS

# CONTINUING Spring '26



## PERSONAL CARE ITEMS



### RETURNING FOR SPRING 2026

**ALL PERSONAL CARE ITEMS MUST BE FACTORY SEALED. THIS WILL BE A CHALLENGE FOR ITEMS LIKE NAIL POLISH, BODY WASH, LOTION, SOAP, ETC.**

**IT MUST BE SEALED - IF YOU CAN OPEN IT TO SMELL, SEE OR TEST, THEN IT IS NOT SOMETHING WE CAN ACCEPT.  
NO GENTLY USED ITEMS ALLOWED, AS WELL.**

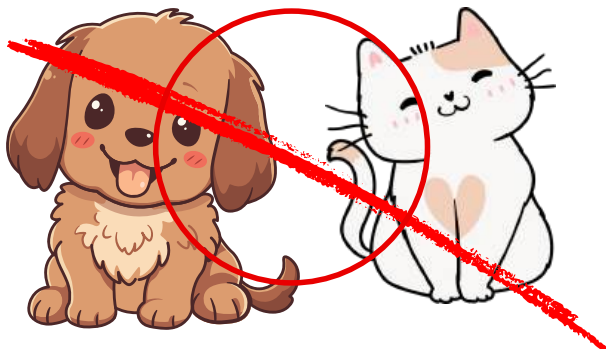
# TAKE NOTE

**GRAND RAPIDS**



# CONTINUING Spring '26

## PET CARE



**CONTINUING  
WE ARE NO LONGER ABLE TO ACCEPT PET CARE ITEMS IN  
OUR MOMMY/DADDY MART.  
THIS INCLUDES PET COSTUMES.**

# TAKE NOTE



**GRAND RAPIDS**



# CONTINUING Spring '26

## CANDLES



**CANDLES MUST BE BRAND NEW,  
THEY ARE IN MOMMY MART & MUST BE MARKED REDUCE**

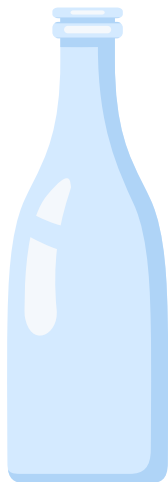
# TAKE NOTE

**GRAND RAPIDS**



# CONTINUING Spring '26

## BREAKABLE ITEMS



### SELLER BEWARE

**ANY AND ALL ITEMS WITH GLASS OR THAT ARE BREAKABLE -  
WHILE YOU ARE ABLE TO SELL THEM - WE CAUTION YOU.  
YOU ASSUME ALL RISK WHEN SELLING GLASS ITEMS AT THE  
SALE. (NOTE WE DO NOT ACCEPT MIRRORS)**

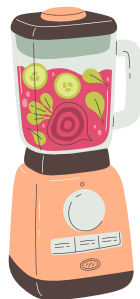
# TAKE NOTE

GRAND RAPIDS



# CONTINUING Spring '26

## ITEMS IN ROOM DECOR OR MOMMY/DADDY MART



**ITEMS GOING IN THESE TWO CATEGORIES MUST BE MARKED REDUCE TO BE ACCEPTED. ALL OTHER LIMITS STILL APPLY.**

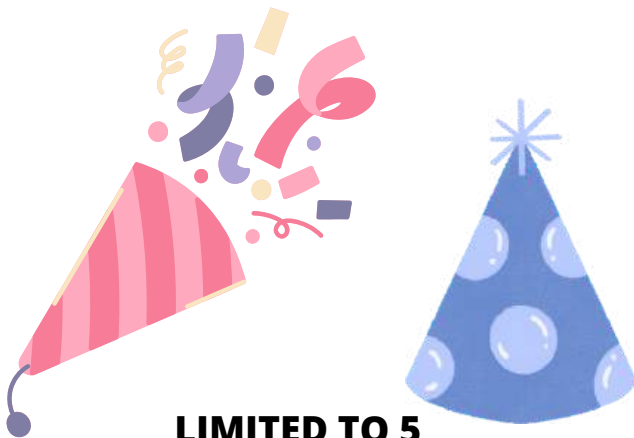
# MARK REDUCE

**GRAND RAPIDS**

# CONTINUING Spring '26



## KIDS PARTY SUPPLIES



**LIMITED TO 5  
KIDS PARTY SUPPLIES THAT GO IN ARTS/CRAFTS**

**PARTY SUPPLIES FOR ADULTS THAT GO IN MOMMY/DADDY  
MART (BRIDAL, ENGAGEMENT, ETC) DO NOT HAVE A LIMIT  
AT THIS TIME, BUT THEY DO SPRING UNDER THE GUIDELINES  
FOR THAT LOCATION.**

# LIMIT 5

**GRAND RAPIDS**

**CONTINUING**

**Spring '26**



## **ELECTRONICS**



**LIMITED TO 5**

**ITEMS INTENDED FOR OUR ELECTRONICS CATEGORY - ITEMS THAT HAVE PLUGS OR BATTERIES ARE BOTH INCLUDED**

**VIDEO GAMES ARE INCLUDED IN THE TOTAL. THIS WOULD NOT INCLUDE ITEMS THAT GO IN OUR TOYS SECTION.**

**LIMIT  
5**

**GRAND RAPIDS**



**NEW**  
**Spring '26**

## **DVD'S**



**MUST BE MARKED REDUCE AND DONATE**

**WE WATCHED THIS AREA CLOSELY IN 2025 AND WE NEED THE  
SELL-THROUGH TO INCREASE IN ORDER TO CONTINUE  
SAVING THE AMOUNT OF SPACE IT TAKES.  
SO PRICE WELL AND THEY WILL SELL!**

**REDUCE &  
DONATE**



# SUMMARY

## Spring '26

### LET'S SUM UP!



- **ACCESSORIES:** ALL UNDIES MUST BE NEW IN PACKAGE
- **BAGS & BACKPACKS:** MUST BE FOR A KID, SEE EXCEPTION
- **BOOKS:** NO ADULT BOOKS, LIMIT 100 KIDS' BOOK TAGS
- **CLOTHING:** GIRLS SIZE 10 OR 10/12 - 25 TAGS
- **DVD'S:** MUST BE MARKED REDUCE AND DONATE
- **ELECTRONICS:** LIMIT 5
- **HELMETS:** WITHIN 5 YEARS OF MANUFACTURE
- **INFANT HANGERS:** NOT ALLOWED ON SIZE 18M+
- **INFANT CLOTHING LIMITS:** PREEMIE/NB/0/3M = 15 TAGS
- **INFANT CLOTHING LIMITS:** 6M, 9M, AND 12M = 50 TAGS
- **INFANT ONESIES:** NO SINGLE ONESIES, BUNDLES OF 3
- **KIDS PARTY SUPPLIES:** LIMIT 5
- **MOMMY MART & ROOM DECOR:** MUST MARK REDUCE
- **MIRRORS/FRAMES:** NOT ACCEPTED
- **PALLET SELLERS:** SEE UPDATED GRAPHIC FOR PALLET ITEMS
- **PET SUPPLIES:** 0 TAGS
- **SHOES:** NO HEELS OVER 1", NO OUTDATED OR ADULT SHOES
- **STUFFED ANIMALS:** LIMIT 5, MUST MARK REDUCE & DONATE
- **TEEN CLOTHING:** NOW SORTED BY TYPE & SIZE, SEE LIMITS

# IN SUMMARY