

ANNE GRADY SERVICES

1525 EBER ROAD

HOLLAND, OH 43528

(419) 866-6500

[www.annegrady.org](http://www.annegrady.org)

Intermediate Care Facility Inquiry Form

Individual's Last Name:\_\_\_\_\_ First Name:\_\_\_\_\_

Address:\_\_\_\_\_

City:\_\_\_\_\_ State:\_\_\_\_\_ Zip:\_\_\_\_\_

Home Phone:\_\_\_\_\_ Cell Phone:\_\_\_\_\_

Email Address:\_\_\_\_\_@\_\_\_\_\_.\_\_\_\_\_

Now just a few questions!

Are you interested in a Group Home or the Anne Grady Center?\_\_\_\_\_

How soon are you looking for placement?\_\_\_\_\_

There is a level of care that must be met for ICF residential placement.

Please read the list below and put a checkmark next to all that applies.

1. \_\_\_\_\_ Diagnosed with a developmental disability before the age of 22
2. \_\_\_\_\_ Have special medical and/or care needs
3. \_\_\_\_\_ Special Diet
4. \_\_\_\_\_ Behavioral Issues
5. \_\_\_\_\_ Currently receiving additional services
6. \_\_\_\_\_ Has a ISP, IHP or IEP

Please fax this form to 419-866-7457 or scan and email this form to:

[jmetzger@annegrady.org](mailto:jmetzger@annegrady.org)



# ANNE GRADY SERVICES

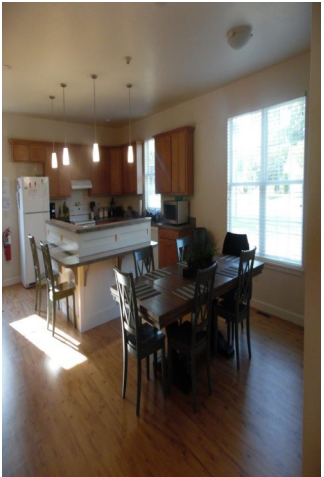
## INTERMEDIATE CARE FACILITIES

MISSION

ANNE GRADY SERVICES CREATES OPPORTUNITIES FOR PEOPLE TO  
DISCOVER AND DEVELOP THEIR FULL POTENTIAL

## AFFORDABLE HOUSING

Anne Grady Services has been providing Affordable Housing for people with intellectual disabilities since 1982. Anne Grady has several different ICFs (Intermediate Care Facilities) that provide residential living for individuals who typically require more care, especially in the area of daily living skills and/or increased physical/health related issues.



## RESIDENTIAL INTERMEDIATE CARE FACILITIES

Funded by Medicaid an ICF Residential Home (whether it is at the Base Facility or Community Group Home) takes care of all costs for the individual:

- Food
- Room and Board
- Utilities
- Transportation
- Hygiene supplies
- Medical Care (Doctors, Dentists, etc.)
- Medical Supplies
- Furnishings
- Home Care
- Day Program

Look inside:

<i>Anne Grady Center</i>	2
<i>ICF Group Homes</i>	2
<i>Respite</i>	2
<i>Fulfilled Life</i>	3
<i>Why Choose An ICF</i>	3

“Welcome Home”



## ANNE GRADY CENTER

We have a base facility located in Holland, Ohio. Our base facility is made up of seven homes with a total of 53 individuals residing there. Six of the homes have 8 people residing and 5 people live on the seventh home. The base facility is handicap accessible and has a

therapy pool, a therapy whirlpool, an exercise gym, a sensory room, and a large activity room.

- 24 hour Direct Care Staff
- 24 hour Nursing
- Physical Therapy
- Occupational Therapy
- Speech Therapy
- Psychologist
- Recreation
- Social Services
- Individualized Meals
- Day Program
- Transportation
- Sensory Room

“Home is where the heart is.”



## ICF GROUP HOMES

We have seven community based Group Homes. (Four 8-bed homes and three 6-bed homes). All of these homes are located in Lucas County. They are in residential neighborhoods and are

handicap accessible. We serve children and adults in our Group Homes. Children can attend schools in the community.

- 24 hour Home Staff
- Registered Nurse Oversight
- Physical Therapy
- Occupational Therapy
- Speech Therapy
- Recreation
- Transportation
- Day Programming
- Individualized Meals
- Social Services

## RESPITE SERVICES

Respite Care was created to give families a break from caregiving. Anne Grady offers overnight respite in a home setting at our ICF and in one of our (8) eight bedroom Group Homes. Our Respite Program is

staffed 24 hours a day. We make certain the person staying with us is cared for with dignity and respect. We transport to school, Day Program and doctors appointments. We serve children and adults.

- 24 hour Respite Care Workers
- Transportation
- Individualized Meals
- Outdoor accessible play area
- Recreation
- Accepts Various Funding Sources
- Access to a pool and spa
- Sensory Room

## LIVING A FULFILLED LIFE



## WHY CHOOSE AN INTERMEDIATE CARE FACILITY?

### Nursing services are easily accessible

Nursing staff are easily assessible to address health concerns. Our nurses work closely with the physicians to ensure the health and wellness of each individual.

### We have our own Therapy Department

The Anne Grady therapy department consist of Occupational, Physical, and Speech Therapy. We have a fully equipped therapy gym. We also have a therapeutic indoor pool and spa.

### 30 Leave Days Per Calendar Year

We know in most cases family dynamics are very important. When you move your loved one to an ICF, you can use leave days around the holidays or important family gatherings. Leave days are also used when a health issues arises that require hospitalization.

### In house Psychologist

Anne Grady has a psychologist in house who works with individuals and families to offer behavioral support, psychological testing and assessments.

### Medicaid/Social Security

When we become your provider in one of our ICF homes, our Social Worker takes care of navigating through the process of applying for social security and Medicaid when necessary.

### Day Program

Anne Grady Day Services (also known as Discovery Day Services) offers Educational Opportunities, Leisure Skill Activities, Daily Living Skill Development, Vocational Training, and Occupational Employment.

### Recreation

In house and community activities occur daily with our recreation staff to keep individuals engaged.

### All Meals Included

Nutritional meals are prepared daily to meet each individualized dietary need.

“Making a Difference”

