

Christ Church Stewardship 2025



Abundant God, you made us in your image and breathed in us a spirit of generosity that is both gift and response. Move us, we pray, to give as we have received—abundantly, generously, and joyfully that our common ministry may ever bear witness to your unfailing grace. In the name of the Three in whom we are One. Amen.

walking the way of love, justice, & peace

Dear Christ Church Family,

As we begin our annual Stewardship Campaign, we invite you into prayer about the journey you make with our congregation – walking the way of love, justice and peace. We are companions on this journey navigating the ups and downs of our shared lives. As Christians we are called to put our love into action to address the challenges facing us and our neighbors with courage and the conviction of our faith; thus, the theme of this year’s pledge drive is ***Courageous Discipleship***.

The phrase, Courageous Discipleship, recognizes that we live in a time when courage is needed in almost every aspect of our lives and centers on the relationship between being a follower of Jesus, a disciple, and experiencing the indescribable presence of God’s power working through us. Being a disciple includes being grateful and generously sharing all that we have been given. Being a good steward means using your time, talent, and treasures to benefit your community and church.

We the Vestry are grateful for the many acts of kindness, courage, and compassion carried out by parishioners throughout the year. During this year’s stewardship campaign, we will highlight some of those acts in “Ministry Moments”. A Ministry Moment is a time in each Sunday service during the pledge campaign where a parishioner will give a brief, personal testimony to the impact of participating in the mission and ministry of Christ Church. As you hear their stories, we know that you will share our gratitude for their service and hope that you are inspired to engage more deeply in the church community.

The annual stewardship drive is the time when we gather your pledges of financial support to ensure that we have a solid foundation to continue our mission and ministries. Our 2025 stewardship goal is 130 pledges totaling \$447,000. As you prayerfully consider what you will share with Christ Church, we invite you to give thanks for the many people who have loved and supported you in your faith and shared their gifts with you.

In gratitude,

 and *The Vestry of Christ Church*

Courageous Discipleship

Racial and Social Justice

We are deeply committed to pursuing racial justice through education, reconciliation, and restorative community action. As courageous disciples we continue to *Learn, Pray, and Act* together. In 2024, together we:

- ◆ Read "The Sum of Us" to understand how racism costs *everyone* and how we could prosper if we chose to be our brother's keepers; and "Poverty, by America," to understand why poverty persists in the US and what can be done about it.
- ◆ Reaffirmed that our biblical teachings propel us from the pews to the public square; and participated in a Social Justice Day in Annapolis learning ways to make our voices heard and actions to take to build a more just society in Maryland.
- ◆ With Faith & Spiritual Growth, we held a powerful six-part adult forum on civic discipleship based on the book "*The False White Gospel*".



In 2025, we'll return our focus to Criminal Justice Reform in Maryland and implement recommendations from participation in the Social Justice Day, Civic Discipleship forums, and you!

Faith and Spiritual Growth

Our commitment to Faith & Spiritual Growth for people of all ages is rooted in our belief that through discovering and exploring different aspects of our spiritual lives, we deepen our connections with God and neighbor and help others to deepen theirs. In 2024, together we have:



- ◆ Offered weekly Sunday Faith Formation, and *Vacation Bible School* for children;
- ◆ Held four seasonal small group discussion series, Bible Study, Lectio Divina, Theology on Tap, and Education for Ministry for adults.
- ◆ Held intergenerational gatherings such as a summer movie night and an autumn afternoon of fun.

Our focus for 2025 will be on continuing to help individuals grow in their relationship with God, building Jesus-centered community, and sharing the stories of what God is doing in our lives, with an emphasis on developing offerings for our middle school youth.

Reaching Our Neighbors

Our commitment to Reaching Our Neighbors is rooted in our steadfast, heartfelt dedication to being a community where *all* are welcome (in person and online).

Over the past year, together we have:

- ◆ Continued numerous Outreach projects addressing food insecurity and poverty in our local community and around the world
- ◆ Worked with partner agencies and interfaith communities to welcome and support refugee and migrant families in our area
- ◆ Hosted more than 250 people in our building each week for meetings, concerts, and other events



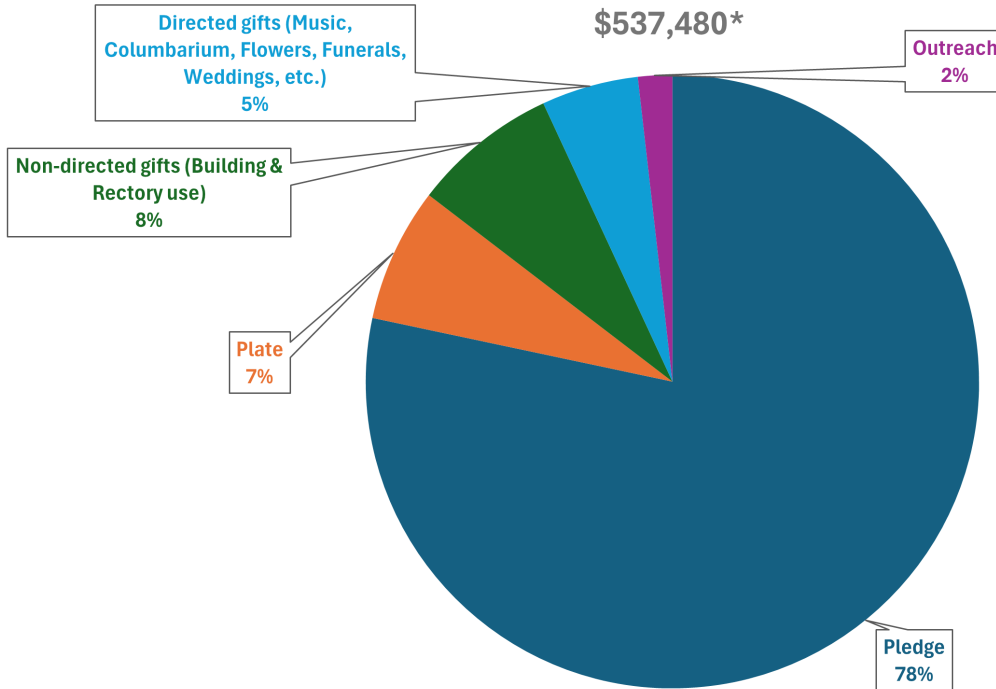
Our goal for 2025 will be to expand our welcome at the church for guests and new members, help all connect and engage, and take actions to build a more diverse community.

2025 Projected Income & Operating Expenses

Your pledges provide almost 80% of our annual income.

2025 SOURCES OF INCOME

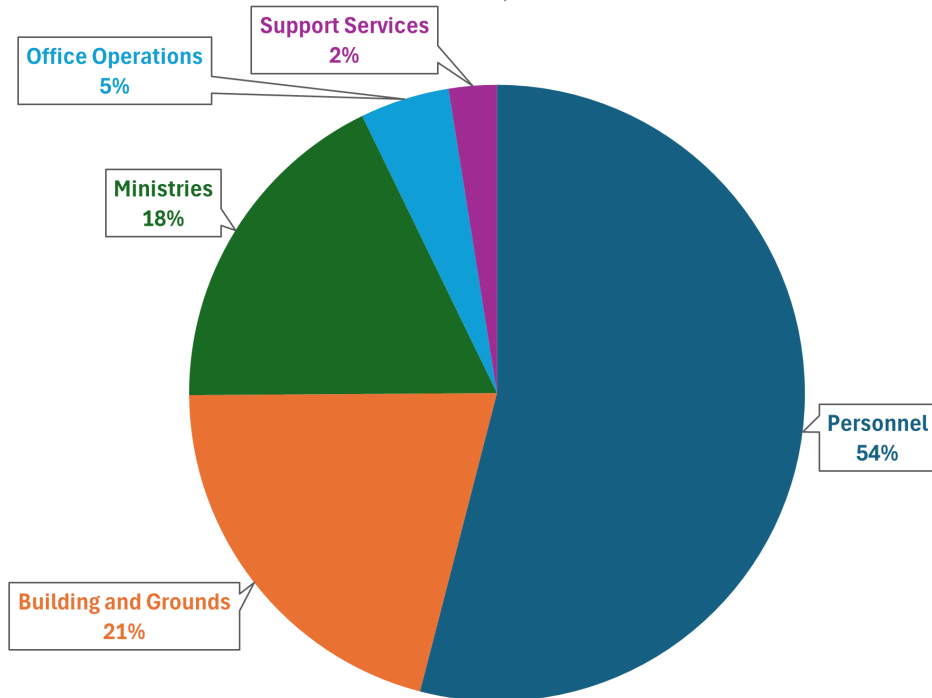
\$537,480*



In 2025, we will close the projected income and expense gap by again tapping into our existing savings and reserves — abundance from previous generations' disciples.

2025 EXPENSE DISTRIBUTION

\$608,495



Some Frequently Asked Questions about Stewardship

Why do we ask you, the congregation, for financial help? Nearly 80% of the dollars needed to keep the church open and operating come from us, the people in the pews.

What is a “stewardship pledge”? Pledging symbolizes a commitment to the parish. A stewardship pledge is your promise to contribute a specific amount to the church over the year, which can be paid weekly, monthly, or as a one-time annual gift. By pledging in advance, you help your vestry create a realistic budget for the church year ahead.

Where does the money go? Key recurring expenses include: *Salaries* for our dedicated clergy and staff; *Utilities, Building maintenance and improvement* to keep our church welcoming and functional; *Childcare* for our little ones; *Talented musicians* who enrich our worship; *Supplies* such as paper for bulletins, oil for candles, support for community building projects...and more.

What’s a good way to figure out what my pledge will be? Consider the value of the church in your life and the life of the community. In 2024, pledges ranged from \$10 to \$14,400 per year, the average pledge was \$3,428 and the median pledge was \$2,600.

Are my gifts tax-deductible? Yes, to the full extent of the law. You will receive a detailed statement at the end of the year.

Is there a minimum amount I have to pledge to be a member at Christ Church? No. All gifts, great and small, are gratefully received. Please don’t let the ability to pledge affect whether or not you show up to church. We are glad you’re here!

What happens if I can’t give as much as I pledged? While your pledge is a commitment to the church, it is not legally binding. We all understand when circumstances change.

What if I really can’t give financially? Your presence and participation are what matter most. Gifts of time and talent are equally valuable expressions of stewardship.

I’m ready! How do I make my pledge? You can return your pledge card by mail, put it in the collection plate, or pledge online by going to www.christchurchkensington.org/give.

Questions? Please do not hesitate to contact Jen Luna, our Parish Administrator (301-942-4673) or any member of the Vestry.

