



Indiana Health Coverage Programs Enrollment Trend Highlights – May 2025



IHCP Program Membership:

Total Membership decreased in May. With **1,905,653** members, there were **40,673**, or **2.09%**, less members in May 2025 than in April 2025. In two months, IHCP membership dropped by over **57,000**. This is a staggering drop in membership over two months.

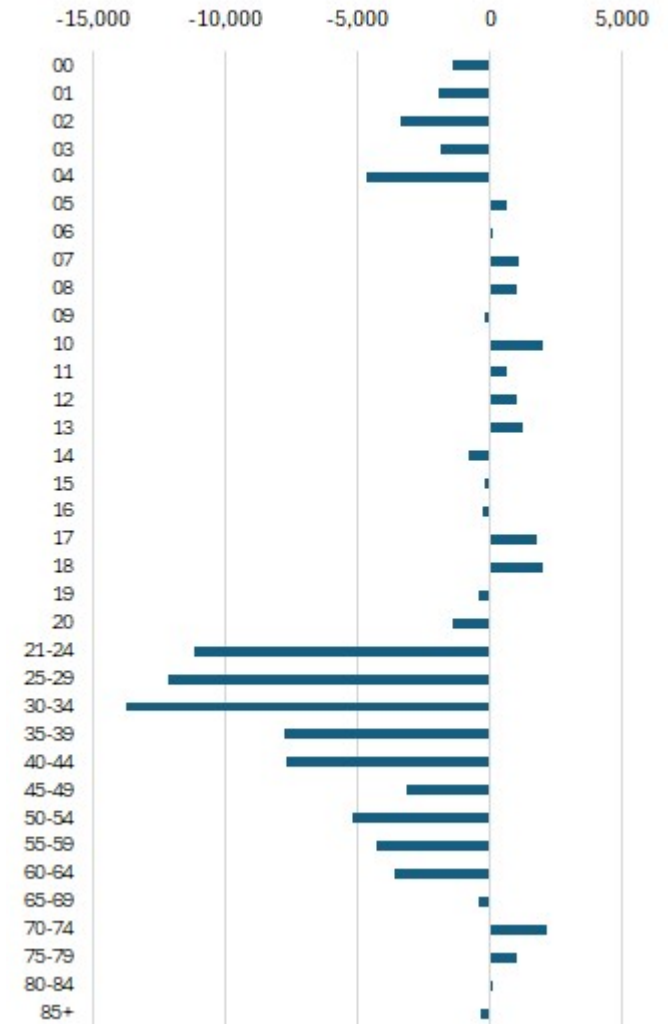
Category Membership:

Membership decreased in all five major categories again in May. HIP membership dropped the most, losing nearly 4%, over 29,000, of its members.

Insights:

The chart on the right shows change in membership from May 2024 to May 2025 by age group. There are over 70,000 less IHCP members in May 2025 than in May 2024. While adult age groups saw the steepest declines, ages 4 and under lost over 13,000 members. That means thousands of children are no longer receiving vital Early and Periodic Screening, Diagnostic and Treatments, which are provided through ICHP membership.

Change in Membership by Age Group from May 2024-May2025



	HHW	HIP	FFS	HCC	PWA
May	751,913	712,952	244,246	79,892	116,650
1 mth.	-0.82%	-3.96%	-1.75%	-0.26%	-0.44%
6 mth. avg.	-1.06%	-4.44%	-2.00%	-0.55%	-0.18%
1 yr. ago	-2.10%	-6.47%	-30.55%	-16.04%	-
April	758,094	742,375	248,585	80,104	117,168
1 mth.	-0.80%	-2.00%	-1.14%	-0.49%	-0.02%
6 mth. avg.	-0.45%	-1.41%	-0.75%	-0.38%	0.27%
1 yr. ago	-2.04%	-3.31%	-29.71%	-16.13%	-
March	764,214	757,562	251,446	80,501	117,187
1 mth.	0.25%	0.47%	0.87%	0.07%	0.38%
6 mth. avg.	0.27%	0.27%	0.02%	0.15%	0.28%
1 yr. ago	-1.52%	-1.91%	-28.29%	-15.80%	-

The values above reflect the percentage difference between the previous month, the six-month rolling average, and the same month last year, respectively.