

# COVID-19 UPDATE



STATE SENATOR  
**JIM RUNESTAD**  
15TH DISTRICT

**OFFICE:** 855.347.8015

**E-MAIL:** [senjrunestad@senate.michigan.gov](mailto:senjrunestad@senate.michigan.gov)

**VISIT:** [www.senatorjimrunestad.com](http://www.senatorjimrunestad.com)

#MISENATE

STATUS UPDATE (6/5/20)

**DAY 87 of STATE OF EMERGENCY  
STAY-AT-HOME ORDER LIFTED**

## CORONAVIRUS RESPONSE (MICHIGAN)

- All Michiganders are required to wear facemasks when entering enclosed public spaces.
- Governor Whitmer has issued over 100 Executive Orders to deal with the public health crisis. Michigan has been under a declared state of emergency by the Governor since March 10<sup>th</sup>.
- All of Michigan is now in Stage 4 “Improving” with Northern Michigan in Stage 5.
- Testing has been expanded to anyone who is showing even mild symptoms of COVID-19 or who has been exposed to a person with COVID-19 or who has been working outside their home for the past 10 days or who works in a long-term care facility or county jail or state prison. You can find the nearest testing location [here](#).
- The state has increased penalties for violating the stay-at-home order up to \$1,000 and threatened non-essential businesses with losing their license if they remain open. This civil fine is in addition to the \$500 criminal fine and 90 days in jail for violating the stay-at-home order.
- Hair salons and personal care business can reopen on June 15, 2020.
- Retailers can allow customers into their stores without an appointment on June 4, 2020.
- Restaurants and bars are allowed at 50% capacity dine-in services as of June 8, 2020.
- Day camps and outdoor pools can open on June 8, 2020.
- Outdoor gatherings of up to 100 are now allowed which opens up outdoor fitness & sports.
- Indoor gatherings of up to 10 are now allowed with 6 feet distance if not in same household.
- Social distancing guidelines and use of masks indoors are still in effect.
- Work that can be performed remotely should still be performed remotely.

## LATEST EXECUTIVE ORDERS

EO 2020-110: Ends the “Stay-At-Home” order for downstate. Read [here](#).

EO 2020-115: Allows personal care services as of June 15<sup>th</sup> and Northern Michigan and the Upper Peninsula are moved to Stage 5 and have broader gathering limits and more indoor services. Read [here](#).

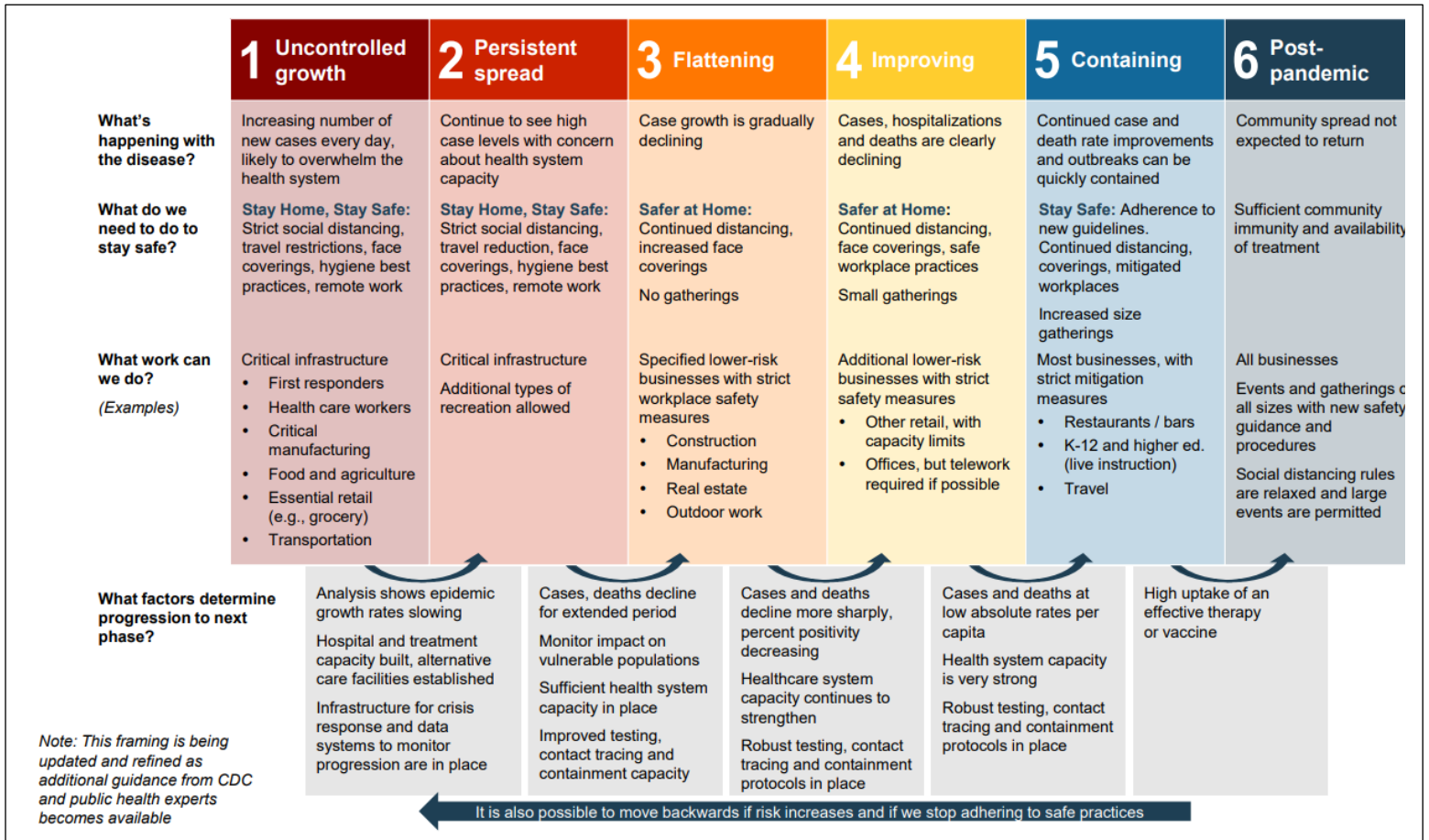
[www.michigan.gov/coronavirus](http://www.michigan.gov/coronavirus) remains the best source of information on Michigan’s response.

## CORONAVIRUS RESPONSE (STATISTICS)

There are currently **58,525** cases of COVID-19 in the state of **Michigan** with **5,615** deaths reported.

There are currently **1,886,555** cases of COVID-19 in the **U.S.A** with **108,768** deaths reported.

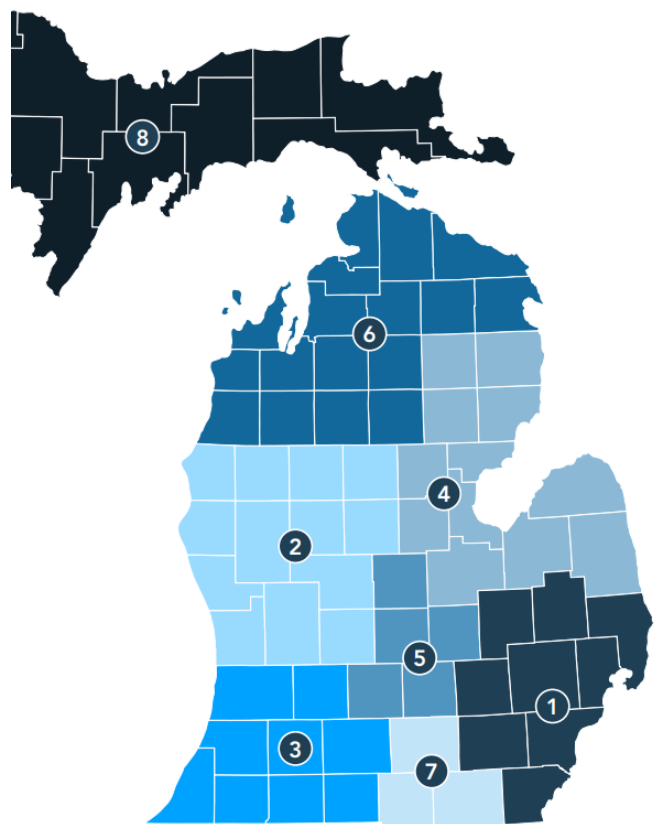
There are currently **6,752,248** cases of COVID-19 in the **World** with **393,555** deaths reported.



For more information go to [www.michigan.gov/coronavirus](http://www.michigan.gov/coronavirus)

GOV WHITMER HAS DECLARED THAT REGIONS 1, 2, 3, 4, 5 & 7 ARE IN **STAGE 4** as of 6/8/20.

GOV WHITMER HAS DECLARED THAT REGIONS 6 & 8 (UP NORTH) ARE IN **STAGE 5** as of 6/10/20.



## CORONAVIRUS RESPONSE (PUBLIC HEALTH)

Doctors now recommend that all Americans wear a facemask when interacting in public.

- 1) You no longer need a doctor's order to get tested. Anyone with symptoms can get tested at a regional testing facility.
- 2) Call the nurses line at the Oakland County Health Department to be directed to the nearest testing facility at **800-848-5533** or via email at **NOC@oakgov.com**.
- 3) Results of the test are generally expected in 5-7 days. The state is ramping up its own in-house testing procedures to create a faster turnaround time.

Symptoms of COVID-19: Fever, Cough, Shortness of Breath

The best way to prevent illness is to avoid being exposed to the virus which is spread from person-to-person contact. Wash your hands often for at least 20 seconds and avoid touching your eyes, nose and mouth. Clean and disinfect frequently touched surfaces daily. Stay home if you are not feeling well.

## CORONAVIRUS RESPONSE (HOW YOU CAN HELP)

If your firm has retooled to produce personal protection equipment (PPE) and you want to get your products to those in need please direct your inquiries to [dtmb-vendoremergency@michigan.gov](mailto:dtmb-vendoremergency@michigan.gov).

The state launched a new website [www.michigan.gov/fightcovid19](http://www.michigan.gov/fightcovid19) to seek medical professionals and citizens to volunteer to help fight the pandemic.

Send a video message to a loved one in a nursing home to show they are not alone. Governor Whitmer is encouraging nursing homes to facilitate virtual visits via electronic communication means. Contact our office if you need assistance in getting the cooperation of your local nursing home.

## CORONAVIRUS RESPONSE (FEDERAL)

### Critical Supplies Delivered



FEMA is coordinating shipments to provide a 14-day supply of PPE to all 15,000 Medicaid and Medicare-certified nursing homes.

FEMA has shipped 10,571 ventilators from the Strategic National Stockpile and the Department of Defense to the states as of April 6<sup>th</sup>. **Michigan has received 700 ventilators**, the third largest amount only behind New Jersey (1,558) and New York (4,440).

The CDC is preparing to deploy a Federal Medical Station to Michigan that can treat up to 250 people.

Forty-two states and four territories have issued stay-at-home orders affecting more than 300 million.

President Trump issued the Opening Up America Again testing blueprint to guide states' plans.

## CORONAVIRUS RESPONSE (HELP FOR JOB PROVIDERS)

Firms can also look here for more information on federal resources available to job providers:

<https://www.michiganbusiness.org/covid19/>

The Paycheck Protection Program has exhausted all \$349 billion that Congress allocated to it. More than 1.6 million loans were issued from over 4,900 financial institutions. **A second round of Paycheck Protection totaling \$310 billion is now available. For more info go to [Mipaycheckprotection.com](https://www.michiganbusiness.org/covid19/) to apply for this new round of forgivable payroll loans.**

MEDC Call Center stands ready to support businesses looking for assistance through other available state programs. For more information, visit the MEDC's website: [www.michiganbusiness.org](https://www.michiganbusiness.org) or call 888.522.0103.

The Small Business Association of Michigan has a daily Facebook live feed to answer questions of job providers around the state. The feed is open to members and non-members alike. You can find them here at 3:00 p.m. <https://www.facebook.com/SmallBusinessAssociationofMichigan/>

## CORONAVIRUS RESPONSE (HELP FOR DISPLACED WORKERS)

Here is the link to the online application: [www.michigan.gov/UIA](https://www.michigan.gov/UIA) or you can call (865) 500-0017.

In response to the COVID-19 pandemic, Governor Whitmer has expanded the eligibility to:

- Workers who are sick, quarantined or immunocompromised and who do not have access to paid family and medical leave or are laid off.
- Workers caring for children out of school or ill family members and do not have access to paid family and medical leave or are laid off.
- First responders who become sick or are quarantined due to exposure to COVID-19 and do not have paid family and medical leave or are laid off.

Self-employed and contracted employees are still not eligible for Michigan Unemployment Assistance, but the federal stimulus package has expanded eligibility to this group of displaced workers through a Pandemic Unemployment Assistance Fund.

### UNEMPLOYMENT INSURANCE

#### File Your Claim By Last Name

ONLINE FILING SCHEDULE:	CALL CENTER FILING SCHEDULE:
 <b>michigan.gov/uia</b>	 <b>1-866-500-0017</b>
<b>A-L</b> FILE CLAIMS Monday Wednesday Friday	<b>A-L</b> CALL ON Monday & Wednesday Friday if you missed your days
<b>M-Z</b> FILE CLAIMS Sunday Tuesday Thursday	<b>M-Z</b> CALL ON Tuesday & Thursday Friday if you missed your days
<b>WEBSITE IS 24/7</b>	<b>8 AM-5PM MON-FRI</b>

The day or time of day in which a claim is filed will not impact whether you receive benefits or your benefit amount. Additionally, your claim can be backdated to reflect the date you were laid off or let go due to COVID-19.

**Call centers have expanded to be open from 8:00 a.m. to 6:00 p.m. Monday thru Friday and on Saturday from 7:00 a.m. to 2:00 p.m.**

## SCHOOL STATUS

Governor Whitmer has closed schools for the remainder of the school year. Individual school districts have implemented distance learning plans that were in place by the end of April.

## ECONOMIC IMPACT

**The state is projecting a \$3.2 billion loss in tax revenue** for the current fiscal year (ending September 30<sup>th</sup>) and next year's budget could see another \$3 billion more in tax revenue shortfalls due to the slowdown in the state and national economy based on the Consensus Revenue Estimating Conference.

More than 6.5 million Americans applied for unemployment benefits each week for two weeks in April due to the stay-at-home orders and non-essential business shutdowns issued across the country. That is nearly **10 times** the previous record week for a surge in applications that was set in 1982. **In just one month's time, more than 20 million Americans have filed for unemployment benefits**, this has nearly wiped out all the job gains since the Great Recession of 2008-09. It is hoped that these losses are only temporary, and that Americans will be returned to work once this crisis has passed.

**The Michigan unemployment rate jumped to 22.7% in April – the highest recorded** since modern methods of measuring unemployment only date to 1976! More than 200,000 Michiganders are expected to be long-term unemployed due to their employer permanently closing their doors.

**More than 1 million Michiganders** have filed for unemployment since the business shutdown orders began. Economists speculate that the Michigan Unemployment Trust Fund could be drained in as little as two months due to the surge in filings. The state would have to borrow to continue making payments and eventually might have to raise business taxes to replenish the fund. This is even more troubling considering that Michigan had the 3<sup>rd</sup> highest unemployment reserve in the nation – about \$4.6 billion in the unemployment fund at the end of last year.

Wall Street analysts predict that this pandemic could destroy \$5 trillion in global economic growth over the next two years which would be like losing the entire Japanese economy to put that into perspective. **They are projecting a 4.0% decrease in GDP for 2020. Even in the Great Recession of 2008-09, we only saw a 2.5% drop in GDP.**

## WHERE TO FIND MORE INFORMATION

Visit [www.michigan.gov/coronavirus](http://www.michigan.gov/coronavirus) to find a complete list of the governor's executive orders dealing with the COVID-19 pandemic. This is also the best place to start to answer any questions you might have.