

# MARIN COUNTY

## **COVID-19** | Phases of Recovery

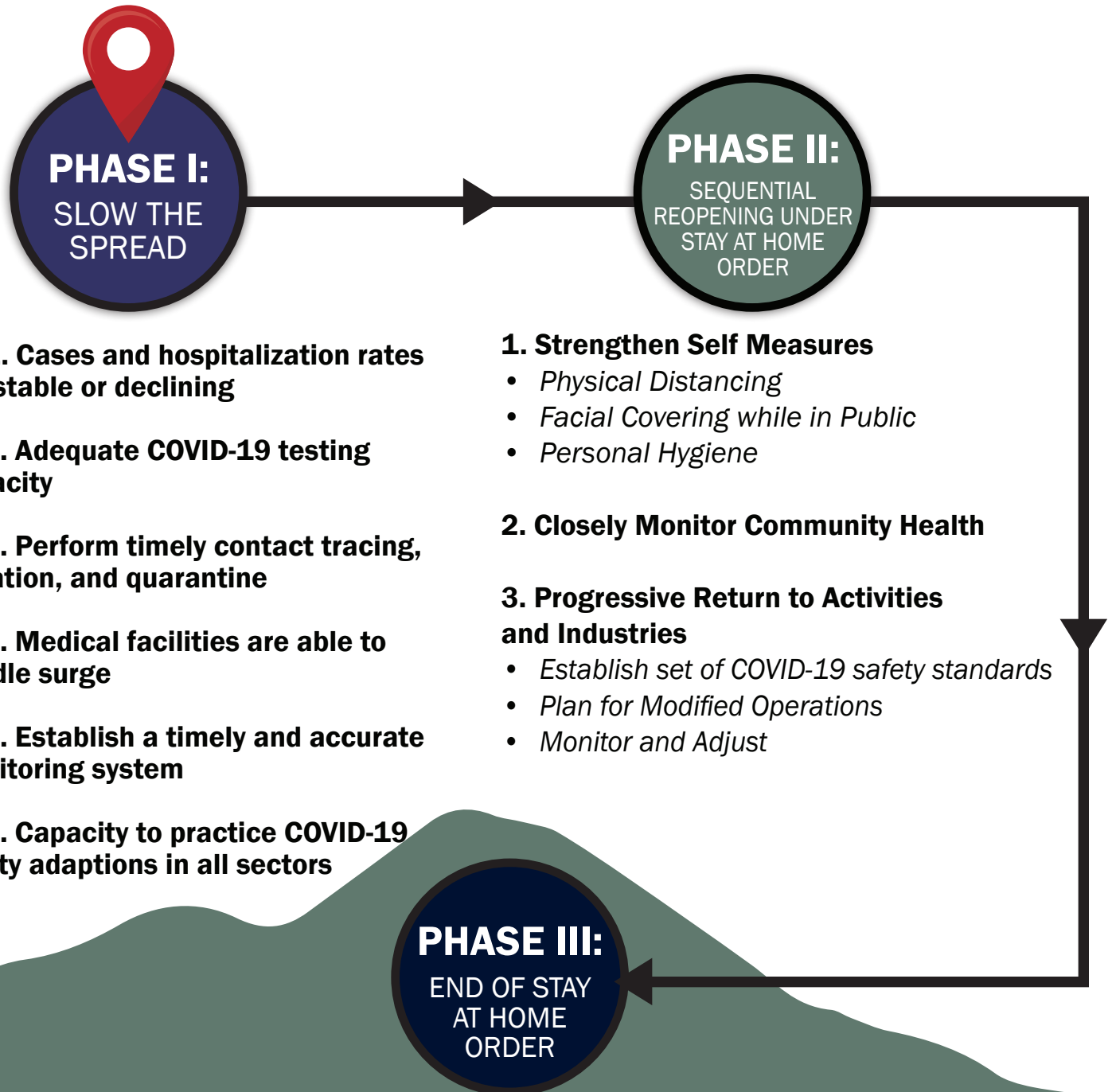
**A plan for a safe, scaled re-opening of  
Marin County**



# COVID-19 | Phases of Recovery

Marin County's COVID-19 response is divided into three broad phases. Each phase has criteria that must be met before moving to the next phase to continue our successful mitigation of COVID-19 while building the infrastructure needed to move forward. This document outlines our process to engage our community as we take steps to rebuild.

**We are here.**



# PHASE I: SLOW THE SPREAD

Slowing the spread of the virus protects all of us, avoids overwhelming our local healthcare capacity, and saves lives. We must be prepared to manage the local COVID-19 burden at all times as the pandemic progresses.

## CRITERIA FOR TRANSITION TO PHASE II:

**1** **Cases and hospitalization rates are stable or declining**  
Sustained surges in COVID-19 cases or hospitalizations will indicate the need for strong shelter in place orders.

**CRITERIA:**  
Two week averages in case rates are not indicating surge in cases

**ACCOMPLISHED**

**2** **Adequate COVID-19 testing capacity**  
Testing for infection is required for tracking, planning and isolating cases and limiting local transmission.

**CRITERIA:**  
Testing capacity allows for testing of all symptomatic persons, close contacts of cases, and at risk groups. Estimated need in Marin is 500 to 1,000 tests per day.

**IN PROGRESS**

**3** **Perform timely contact tracing, isolation, and quarantine**  
Early isolation of cases and quarantine of their contacts stops chains of virus transmission.

**CRITERIA:**  
The ability to reach and isolate 90% of cases and quarantine their contacts within 24 hours of diagnosis.

**IN PROGRESS<sup>1</sup>**

**4** **Medical facilities are able to handle surge**  
Acute treatment facilities must be able to scale and meet the demand without resorting to crisis standards of care.

**CRITERIA:**  
Sufficient hospital beds, respiratory equipment, personal protective equipment and staffing for forecast surges.

**ACCOMPLISHED<sup>2</sup>**

**5** **Establish a timely and accurate monitoring system**  
Timely data from hospitals, laboratories, emergency medical services and other sources describes important trends and guides strategy.

**CRITERIA:**  
Real-time data dashboard in place to track local hospitalization rates, incidence of disease at the community level, rates of respiratory illness, and hospital surge capacity.

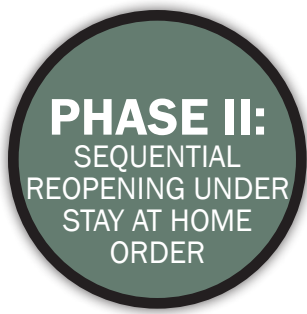
**ACCOMPLISHED**

**6** **Capacity to practice COVID-19 safety adaptations in all sectors**  
Businesses, childcare, transportation and other sectors must be prepared to practice safe standards to prevent illness.

**CRITERIA:**  
Marin Recovers convened and actively supporting development and approval of sector-specific safety plans.

**IN PROGRESS**

<sup>1</sup> Contact investigation teams and alternative housing to maintain isolation can meet current demand but need to expand with case volume. <sup>2</sup> Sufficient capacity at existing medical facilities with expansion plans in place if needed.



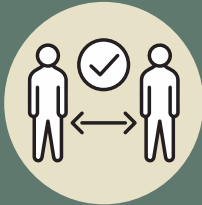
As the County of Marin meets the criteria to move beyond phase I, we must implement a framework to safely and progressively reopen with new adaptations for all sectors, where we live, work and play.

## FACTORS FOR SAFE AND SUSTAINED REOPENING

### 1. STRENGTHEN SELF MEASURES

Simple measures can powerfully reduce risk of infection. As activities are allowed to resume, these precautions must remain in place.

#### Physical Distancing



Whenever possible, maintain a distance of at least 6 feet between individuals.

#### Facial Covering in Public



Use of cloth facial covering while in public.

#### Personal Hygiene



Frequent cleaning of hands, avoiding touching face, sanitize surfaces frequently.

### 2. CLOSELY MONITOR COMMUNITY HEALTH



Detailed and real-time monitoring of community health indicators, allowing for the public health officer to adjust guidance as needed.

#### Local Health Care Coordination

Local health care partners engaged to assist public health officer in assessing health impact and determination of safety of staged re-opening. Process and metrics published at regular intervals.

### 3. PROGRESSIVE RETURN TO ACTIVITIES & INDUSTRIES

To carefully re-open, we must describe risk in each sector or industry and develop processes to minimize those risks. Within Phase II, starting with lowest risk activities, each moves toward reopening based on established safety criteria, assessed at 2-week intervals.



#### Establish set of COVID-19 safety standards

Operational criteria that would be needed to safely resume an activity or industry.

#### Plan for Modified Operations

Coordinate with industry advisors to create recommended operational standards by industry and aid organizations in meeting the criteria. Share launch plans on Marin Recovers.

#### Monitor and Adjust

Continually monitor data and COVID-19 safety standards to determine which activities and industries can be safely reopened or may need to be limited again based on COVID-19 activity.

# MARIN RECOVERS INDUSTRY ADVISORS

A safe and measured re-opening process will require unprecedented collaboration of health care leaders, industry, and government. United, we can forge new lines of communication that allow timely coordination, real-time data monitoring and a common path forward.

## Marin Recovers Industry Advisors

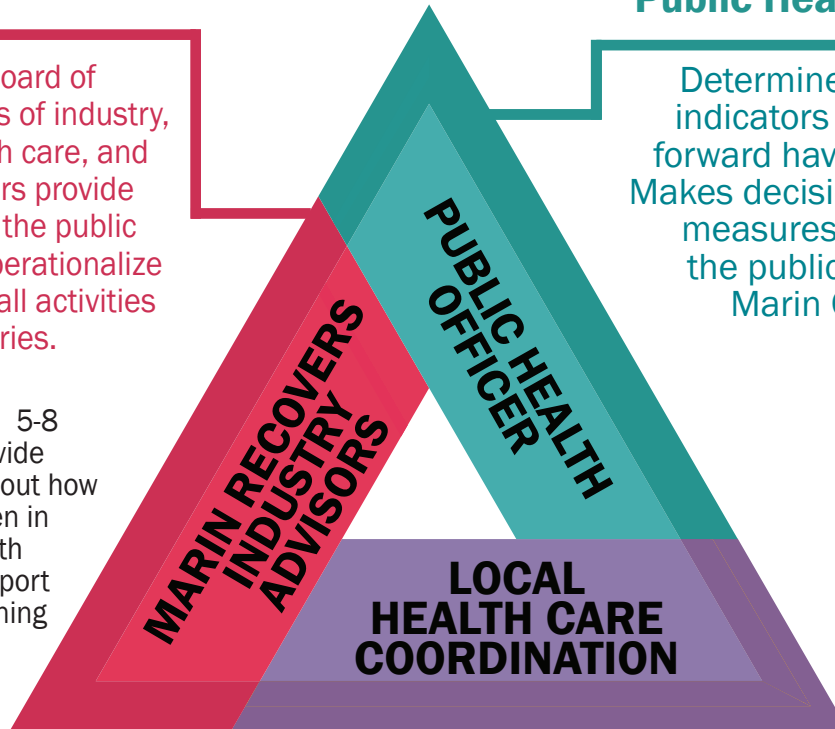
Lead by the Board of Supervisors, groups of industry, community, health care, and work-force leaders provide a connection for the public health officer to operationalize measures across all activities and industries.

Industry work groups: 5-8 people per group provide recommendations about how an industry could open in compliance with health officer order, and support organizations in planning and implementing recommendations. Groups are diverse in membership, including members who represent both small and large organizations within an individual industry, as well as trade associations.

- Restaurants
- Retail
- Construction
- Parks/Outdoor Recreation
- General Office Space (e.g., industrial, tech, etc.)
- Childcare
- School Services
- Transportation
- Hotels/Motels/Hospitality
- Personal Services
- Arts Sector
- Real Estate
- Faith Based Organizations

## Public Health Officer

Determines whether indicators for moving forward have been met. Makes decisions regarding measures to protect the public health of Marin County.

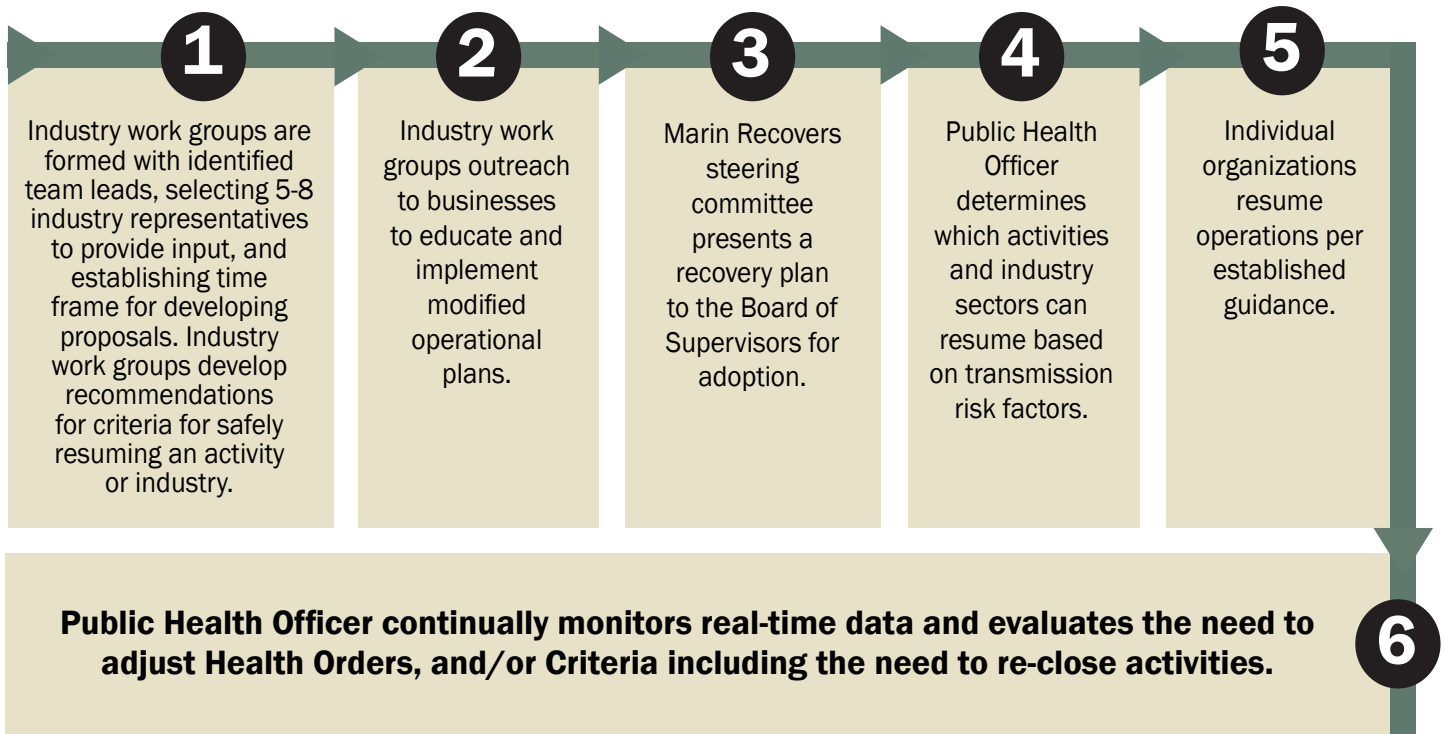


## Local Health Care Coordination

A comprehensive set of health care sector and patient populations.

- Recommends permissible activities and industries based on transmission risk factors
- Provides guidance criteria for re-opening
- Supports and consults with the Marin Recovers Industry Advisors
- Reviews proposed operational standards (as requested)

# RE-OPENING WORK FLOW



## PHASE III: END OF STAY AT HOME ORDER

To achieve Phase III, enough immunity must be present in the community through natural immunity or immunization to allow unrestricted activity across all domains. Given COVID-19's prevalence in the community with no immunization in existence, this phase will take time to achieve.

