



COVID-19 DIRECTORY

In June 2006, the NEW Manufacturing Alliance was formed to address the workforce needs of the manufacturing industry. The membership is a true partnership between manufacturers and the private sector working collaboratively together. One of the guiding principles of manufacturing companies is employee safety. This directory showcases Alliance member's products and services that can keep employees safe and businesses thriving during the COVID-19 crisis. Please consider these businesses as you purchase PPE and other related products and services.

American Tent.....	5
Badger Tag & Label Corp.....	6
Brand Advantage Group	7
BRAAS Company, Inc.....	8
Camera Corner Connecting Point	9
Elevate97	10
Express Employment Professionals	11
Forsite Benefit Partners	12
Fox Converting	13
The Geo Group Corp.	14
Industrial Works.....	15
Jacobs	16
MidAmerican Building Services.....	17
Munroe Exhibits.....	18
Paychex	19
Plymouth Foam	20
Reach Amplification.....	21
Rockwell Automation.....	22
RRD.....	23
Ruder Ware, LLC.....	24
R & R Insurance	25
Safety Connections	26
Skyline Exhibit Resource	27
Sure Controls	28
Towsleys	29
Vantage Financial	30
vonBriesen	31
Wisconsin Fastner Supply	32
Wolter Group LLC	33
Zenith Express	34

BEST PRACTICES

NEWMA members share their best practices put into place during the COVID-19 pandemic

- * Posted up-to-date communication about business practices and hours on website and on location
- * Extra signage posted about good hygiene
- * Established policies and practices for social distancing
- * Support respiratory etiquette and hand hygiene supplies for employees, customers, and visitors
- * Designated break rooms and restrooms for different departments
- * All work areas, high-touch and common areas are cleaned at the end of their shift
- * Contracted extra cleaning services with janitorial company
- * Relaxed attendance policy, not assigning points for absences
- * Employees working every other week, to decrease the number of people in the plant
- * Employees that can work from home, are being asked to do so
- * No travel to states that have been significantly impacted
- * If employee travels for work or personal, not permitted back to work for 1-2 weeks
- * Visitors must fill out a declaration of travel and health
- * Employees arriving at work are having their temperature taken, must be lower than 100 degrees. In order to return to work must be under 100 degrees for 3 days in a row.
- * Employees are required to notify employer if they test positive for COVID-19 or they have been in contact/exposed to someone who tested positive for COVID-19.
- * Employees who have been diagnosed with COVID-19, who have not had any symptom may discontinue home isolation when at least seven (7) days have passed since the date of their first positive COVID-19 diagnostic test and have had no subsequent illness. See [CDC guidance](#).
- * You should send home all employees who worked closely with the COVID-19 infected employee for a 14-day period of time to ensure the infection does not spread. Before the employee departs, ask them to identify all individuals who worked in close proximity (three to six feet) with them in the previous 14 days to ensure you have a full list of those who should be sent home. When sending the employees home, do not identify by name the infected employee or you could risk a violation of confidentiality laws. See [OSHA Guidance on Preparing Workplaces for COVID-19](#)

Stop the Spread

**Stay up to date!
Find more
information at the
links below**

[Interim Guidance for Employers to Plan and Respond to \(COVID-19\)](#)

[United States Department of Labor - OSHA](#)

ASSOCIATE MEMBER COVID-19 RESOURCES

[Associated Bank](#)

[Associated Financial Group](#)

[BMO Harris Bank](#)

[First Business Bank – Northeast](#)

[Hometown Bank](#)

[Investors Community Bank](#)

[Johnson Financial Group](#)

[Nicolet National Bank](#)

[PNC Bank](#)

[Wells Fargo](#)

[Wisconsin Bank and Trust](#)

[ADP - Payroll, HR & Tax Services](#)

[CLA - CPAs & Consultants](#)

[Forsite Benefit Partners LLC](#)

[KerberRose – CPA Firm](#)

[Paychex, Inc. – HR, Payroll, Benefits](#)

[WIPFLI - CPAs & Consultants](#)

[Davis|Kuelthau's Law Firm](#)

[Ruder Ware Law Firm](#)

[von Briesen Law Firm](#)

[Acuity Insurance](#)

[EMC Insurance](#)

[M3 Insurance](#)

[McClone Insurance](#)

[R & R Insurance](#)

STATE & NATIONAL COVID-19 RESOURCES

[CDC](#)

[Department of Labor](#)

[OSHA](#)

[State of Wisconsin](#)

[US Department of the Treasury](#)

[US Small Business Administration](#)

[Wisconsin Department of Health Services](#)

[Wisconsin Department of Workforce Development](#)

Make Your Space Work

Add social distance style

to your bar or restaurant

When it's safe to open up again, make the most of your space by adding a tent to your venue. Bars and restaurants can adhere to social distancing guidelines while not losing out on volume thanks to custom tents from American Tent.

We've got the tent that will work for you. Contact Jake today at 920.280.0965 to learn more.



www.american Tent.com

HELPING YOU ADJUST TO THE NEW NORMAL

Are your production levels changing due to the
COVID-19 pandemic?



We offer quantities from one to millions,
so we can accommodate your needs.



- Labels
- Tags
- Floor graphics
- Wall graphics
- Window clings
- Signage
- Magnets

Help your customers or employees navigate any
new procedures.



800-331-4863

Random Lake, WI
sales@badgertag.com
www.badgertag.com



Brand Advantage Group

a Safeguard company

Brand Advantage Group is proud to be the newest member of the NEW Manufacturing Alliance.

With our robust supply chain of worldwide sources for promotional products we have been able to switch gears and use those channels for securing PPE for our customers. A partial listing of our most frequently asked for items are listed below.

Personal Protection Equipment, products to protect your employees and customers.

- Masks, cloth imprinted and disposable
- Infrared Thermometers
- Disposable Thermometers
- Hand Sanitizer
- Gloves
- Plexiglass barriers

Signage, directional signage will be critical as we open up doors to welcome employees and customers back.

- Retractable Banners
- Feather Flags
- Floor Graphics
- Directional Signage
- Window and door signs

Print, returning employees want to know what company policies are in place to protect them under the new normal.

- Cleaning procedures
- Vending machines, coffee machines, are they available?
- Lunch room rules
- Social distancing, workspace rearranging

Branded “Welcome Back” gifts

- Lunch Box (vending shut down?)
- Safety Kit
- Drinkware
- Webcam Covers
- Apparel

Contact Joe to schedule a consultation.

Joe Lancour

Office: 952.882.3353

joe.lancour@brandadvantagegroup.com

Brand Advantage Group

1740 Cofrin Drive

Green Bay WI 54302



Body Temperature Inspection Systems



BR-BTIS400-KO

When Safety and Temperature Matter

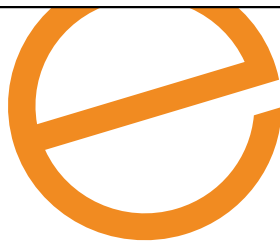




Ensure the health and safety of your employees and clients with technology to continue your operations, whether for remote work or in-person work following social distance guidelines.



Reach out to CCCP to learn more
(920) 435-5353 or contactus@cccp.com



FACE SHIELDS

- FDA and USDA approved .015 PETG Plastic.
- Shield offers full coverage at 11.5" x 13".
- 1.5" foam headband with NO LATEX for comfortable fit against forehead.
- Adjustable headband with hook-and-loop closure.
- 100% Made in USA.
- Shipped over 500,000 shields to hospitals, health systems and state response teams all over the US.
- Shields come (150) to a case.
- Case cost is \$525.00 + shipping (\$3.50 Each).
- Small quantities available upon request.



SNEEZE GUARDS

- Shield is routed out of .220" clear acrylic.
- Bases are routed out of .220" clear acrylic.
- Customizable opening in bottom for pass-thru.
- Overall dimensions 35"h x 31"w**
- 100% Made in USA.
- Easy to sanitize and clean.
- Per piece cost is \$99.00 + shipping.**

**Overall dimensions fully customizable.



FLOOR DECALS

- Custom designed floor decals.
- 10" X 10" round or square cut.
- Floor vinyl with non-slip laminate.
- Easy application process (peel/stick).
- Can be sanitized and cleaned.
- Remove without damage to surface.
- (50) Decals \$375.00 + shipping.
- Small quantities available upon request.

Ask us
about our other
PPE SUPPLIES

- Gloves • Masks •
- Thermometers • Etc.

SHOP NOW

shop.elevate97.com

TEMPERATURE SCREENERS READY FOR ASSIGNMENT

Keeping your organization running at peak efficiency is one of our priorities. That's why Express Employment Professionals has temperature screeners ready to help ensure your employees are at their best.

SERVICE THAT COUNTS

It's important to place the right person. Our associates will:

- Follow your screening processes subject to EEOC and CDC guidance
- Self-screen before coming to work
- Wear the provided PPE while at work

We look for the right screener for your organization, that's why we only place associates who possess the right qualities.

- Experience in a compliance-oriented environment
- Customer service skills
- Attention to details
- Excellent documentation skills
- Cultural fit

STAFFING SOLUTIONS

Express offers a variety of staffing options to fit your specific needs, including:

- Flexible Staffing
- Temporary or Contract Staffing
- Direct Hire

CONTACT EXPRESS TODAY!

GREEN BAY

Matt & Kim Sullivan, Owners
(920) 940-6000

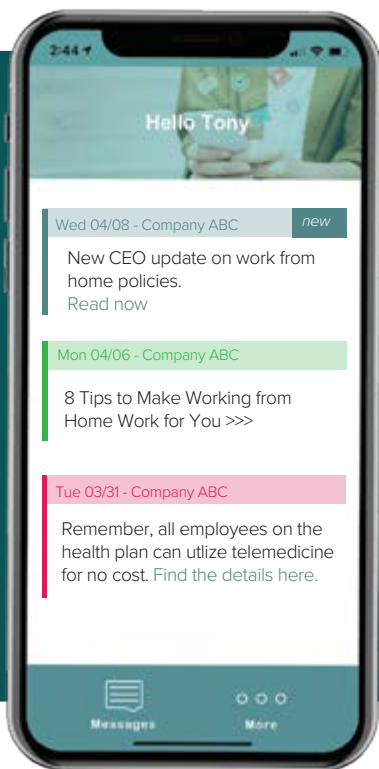
APPLETON

Mark Leupold, Owner
(920) 624-6100



Stay Connected to Your Workforce

We know clear communication to your workforce is more important than ever. That's why we are offering businesses access to our communication app at NO COST during these unprecedented times.



COMMUNICATION APP

Help your HR Team securely communicate important information to your employee population.



Compatible with iPhone and Android devices



Safe & secure messaging



Simple, easy registration



Send notifications to employees' phones



To redeem your free access code, contact info@forsitebenefits.com

Infection Control Products

Fox Converting is a local manufacturer of medical and dental paper products. The main focus for these products is to maximize infection control and minimize cross contamination.

Tape Tab "Bedside" Waste Receptacle Paper Bags



Tape Tabs stick to clean, dry surfaces.
Minimizes cross contamination

Swabs 8" & 16" (Non-Sterile)



Swabs feature a single, large, absorbent rayon tip. 8" for OB/GYN and 16" for anoscopes & general procto applications. Swabs are Autoclave, Chemical Vapor & ETO Gas sterilizable.

Sterilizer Wraps



Made of a white, high wet-strength, environmentally friendly, creped paper used in Autoclave, Chemical Vapor or ETO Gas sterilizers

Sterilizer Bags



These high quality bags are made of strong, environmentally friendly, sterilizable white paper

Phone: 920.434.5272

Email: info@foxconverting.com

Web: foxconverting.com

1250 Cornell Rd

Green Bay, WI 54313





Language access has never been more important.

Translate signage, posters and notices into Spanish, Hmong and over 100 other languages. Telephone and video interpreting services are available to communicate Coronavirus disease (COVID-19) containment messages.

Translation and interpreting services are essential. We are offering a 10% discount to our Alliance members. We are here to help.



The Geo Group Corporation
Speaking the language of business.

www.thegeogroup.com

Industrial Works

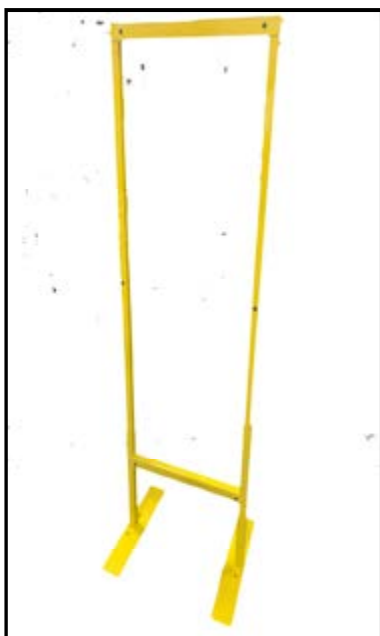
Services • Fabrication • Manufacturing

ISI **IFAB** **IMFG**
Industrial Stainless Industrial Fabrication Industrial Manufacturing

Personal Protection Dividers / Partitions

Floor, Wall, Ceiling, or In—Line Mounted

Clear View Vinyl or Clear Rigid Polycarbonate



Stainless Steel or Painted Tubular Steel

Custom Sizes - We are here to help you!

Call us today: 920-497-1861

www.ind-works.com Green Bay, Wisconsin

One Less Thing to Worry About

We tackle the world's toughest challenges

The world needs innovators and problem solvers who turn challenges into greater opportunities. We have an insatiable curiosity about transformative trends challenging the status quo: **Clean water. Affordable energy. Connectivity. Climate change. Environmental pollution. Economic growth.**

Quality and safety are cornerstones of our business. We strive to design and create products that are safe, effective and sustainable.

In this time of uncertainty, we want to assist your company and offer a unique set of skills to help with a wide range of manufacturing challenges. We employ a set of highly skilled designers and engineers well versed in electrical and mechanical machine design, automation, chemical processes, HVAC and structural design to assist in upgrading and retrofitting current equipment.

In these challenging times we understand that your business may be challenged with the need to be nimble, and to flex or entirely change your typical production output. Whether your challenge is throughput, need for product modification, equipment integration, general arrangements or efficiency improvement as you grade change, we can help.

We are in the business of designing machine upgrades, retrofits and process improvements that will increase your efficiency and production capacity while bringing safety to the forefront.

We offer a full range of Manufacturing Engineering Services, specializing in:

- Machine Design and Automation
- Plant Layout Optimization
- First-Of-A-Kind Development
- Material Handling Systems
- Process Simulation and Optimization



Please contact: Dale Turriff (920-764-0374), Ted Wadzinski (920-371-4714), John Boettcher (920-639-6889)

Let's get back to business!

Is your cleaning company ready?

We are!



MidAmerican
BUILDING SERVICES

Our Strength is our People!

www.midamericanbuildingservices.com

**MidAmericans staff members are well trained
on the latest cleaning and disinfecting
procedures that are now needed to ensure your
building re-opens safely.**

**We also do hard floor maintenance, carpet
cleaning, and high ceiling work!**



**Please contact
Patty Hendrickson,
VP for Northeastern WI
@ 920-264-3015**

**pattyh@
midamericanbuildingservices.com**

Looking forward to meeting with you!

*MidAmerican has been in business since 1964 in the
Milwaukee, Madison Areas...and now we are in
Northeastern WI and Wausau Area!*

Temperature Scanners

**Infrared Thermometer units
First line of infection disease defense!**

Enhancing the Health Safety of Work, Shopping and Public Spaces!

**Fahrenheit or Centigrade readouts
CE, ROHS and FCC certifications.**

**Infrared Thermometer Box
for body temperature measuring**

**\$398/each (min 1000)
or \$298/each min 100K order**

**Walk through infrared
temperature detection door**

**\$998/each (Min 1000)
or \$798/each min 100K order**

**Infrared Thermometer Pole
for body temperature measuring**

**\$693/each (min 1000)
or \$493/each min 100K order**



Contact Greg Scanlon - greg@munroe-exhibits.com - 1.920.636.3176



Business is Complex. Paychex Makes it Simple.

For nearly 50 years, we've made it simple for businesses to pay and manage employees. We handle their benefits programs, help guide them through human resources challenges, keep them up to date with ever-changing laws and regulations.

We do it on many levels – with our innovative technology platform, experienced professionals, and dedicated experts. And today, that's more important than ever. At Paychex, we're working so you can keep working.

Empower your business at payx.me/WI-simple

PAYCHEX®

HR | Payroll | Benefits | Insurance

The Power of Simplicity®



DIVIDER

WORKSPACE PROTECTION

AVOID CLOSE CONTACT

**PROTECTING YOURSELF AND
YOUR COWORKER**

**DURABLE LAMINATED MATERIAL, SIMPLE
ASSEMBLY AND COST EFFECTIVE!**

— REMAIN SAFE AT YOUR —
WORKSPACE

OUR ENGINEERS ARE READY TO
CUSTOMIZE YOUR DIVIDER
TO FIT YOUR WORKSPACE.

| ---- Your Width ---- |



800.669.1176

sales@plymouthfoam.com

www.plymouthfoam.com

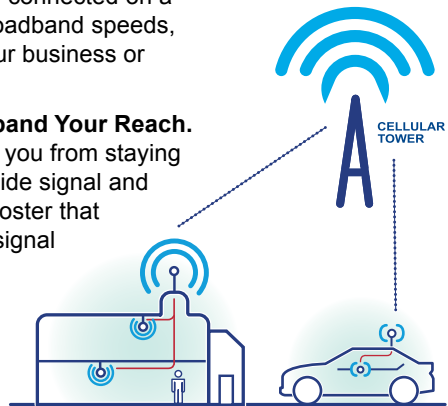
pf
plymouth foam

Ensure Your Business Stays Connected

Cellular Routers—Wireless Internet from Anywhere at Any Time. Stay connected on a secure network, with up to broadband speeds, while on the go or while at your business or home office.

Building Amplification—Expand Your Reach. Don't let poor cell signal keep you from staying connected. Amplify weak outside signal and bypass obstructions with a booster that extends the range of cellular signal for voice and data.

Contact us at 715-298-4414 to help you determine the best option for your business, home or mobile office.





AMPLIFICATION

www.ReachAmplification.com

The skills gap is real, and it's only getting wider

There are people without jobs, **and jobs without people**

WHAT IS THE SKILLS GAP?

It's a shortage of skilled, trained people. It's the difference between what workers know how to do and what employers need.

HOW IT AFFECTS YOU AND YOUR COMPANY

3.4 million manufacturing jobs will need to be filled in the next decade. But up to 2 million of those likely won't be, presenting a serious challenge.



BY
2025

e-Learning could be the solution you need.

Complimentary now through June 30, 2020

Offerings for on-demand, flexible employee training

ACTIVE TECHCONNECT™ CUSTOMERS				NO ANNUAL SUPPORT CONTRACT
FASTPASS	SINGLE USER	GROUP USER	MULTI USER	FASTPASS
90-day access to a single course for a single user	365-day access to all e-learning library content for a single user	365-day access to all e-learning library content with minimum user count of 10 Supervisor Dashboard Included	365-day access to all e-learning library content with minimum user count of 50 Supervisor Dashboard Included	90-day access to a single course for a single user
Catalog Number: EL-3TC	Catalog Number: EL-12SU	Catalog Number: EL-12GU	Catalog Number: EL-12MU	Catalog Number: EL-3

E-learning is accessible through myRockwellAutomation.com
Learn more about available courses at ROK.auto/elearning

Deloitte analysis based on data from U.S. Bureau of Labor Statistics and Gallup Survey



COVID-19 RESOURCES FROM RRD

FOR MANUFACTURING AND OFFICE FACILITIES



Illness Prevention and Employee
Wellness Communications



Face Shields



Packaged Kits



Fever Detection
Thermastrips



Internal & External Customize Signage and
Touchless World Solutions



For more information

Rick Nelson
920.737.0454
rick.nelson@rrd.com

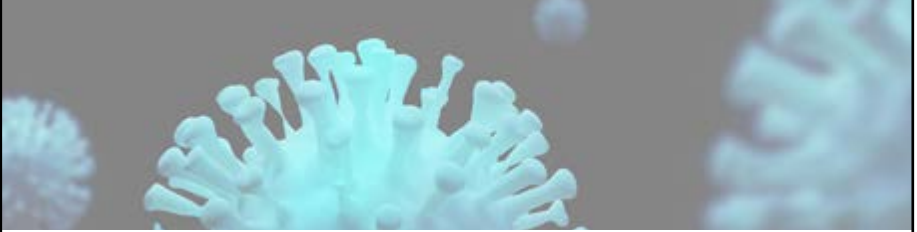
Faceshield Product Information

Intended to be used solely as a standalone personal-use face shield, for either single user or single use only. Made from 18pt SBS paperboard, 4-5mm polystyrene plastic film. Potentially contains flammable materials. Not recommended for use in presence of high intensity heat or open flame. Not intended for any use that would create an undue risk in light of the current health emergency. Use of the RRD Face Shield alone will not prevent infections from microbes, or viruses, nor is it effective for radiation protection.

The product has not been FDA cleared or approved. The product has been authorized by FDA under an EUA for use by healthcare providers as personal protective equipment. This product is only authorized for the duration of the declaration that circumstances justifying the authorization of emergency use under Section 564(b)(1) of the Act, 21 USC 360bbb-3(b)(1) unless the authorization is terminated or revoked sooner.

For more information rrd.com/covid-19

© 2020 R.R. Donnelley & Sons Company. All rights reserved. RR DONNELLEY, RRD, and RRD (Stylized) are trademarks or registered trademarks of R.R. Donnelley & Sons Company. All other trademarks are the property of R.R. Donnelley or their respective owners.



The COVID-19 pandemic is one of the worst health crises our country has faced in recent history. While every day brings new challenges, it's obvious the impact will be far reaching.

Our attorney team has been working together to guide clients through these difficult times. Areas our attorneys provide counsel include:

- ADA Compliance
- Commercial Transactions (Force Majeure/ Terminations)
- Data Privacy & Security
- Employee Benefits
- Employment Issues
- Healthcare Policy & Compliance
- HIPAA
- Insurance Policies & Coverage
- Loan Agreements
- OSHA
- Supply Chain and Logistics

**Learn more about our COVID-19 Focus Team
at [ruderware.com](https://www.ruderware.com)**

Wausau | Eau Claire | Green Bay
800.477.8050 | [ruderware.com](https://www.ruderware.com) | Visit our blogs at [blueinklaw.com](https://www.blueinklaw.com)



A man with dark hair, wearing a blue button-down shirt and a white surgical face mask, is leaning on a wooden counter in what appears to be a deli or grocery store. In the background, shelves are stocked with various items, and hanging meats are visible on the wall.

More than Insurance.

Business Recovery Resources

As economic activity begins to expand for some businesses and re-open for others, we're here to help you re-engage in a safe, responsible manner.

- Webinars and on-demand training videos
- Re-opening checklists by industry
- Mental health resources
- Tools for employee retention

[View Our COVID Resources](#)



BUSINESS | HOME | WEALTH

MyKnowledgeBroker.com | 800.566.7007



Navigating Business Challenges-Dealing With COVID-19



Currently our clients are facing their own unique challenges as they focus on both the safety of their people and the continuity of their operations. We develop policies, procedures, and train accordingly to their company needs.

Safety Connections provides top notch services:

Workplace Violence & Security

- Security Assessments - Active Shooter

Leadership Development

- Accountability - Safety Culture - Coaching and Mentoring - Effective
 - Communication - Team Building

Motivational Speaking

- Motivating Your Employees - Overcoming Conflict & Diversity
 - Team Building

Safety Program Coordination

CPR / AED / First Aid Training

OSHA Compliance Safety Training/Representation

Safety Audits / Assessments

We offer a **no cost** weekly health and safety tip, if interested please send e-mail request to jim@safetyconnections.com or call Jim Lehrke at 920-912-7233.

COVID-19 Environmental Graphics



Customize your specific message, color, logo and brand.
Graphics can be safely cleaned/sanitized.
Available for floors, windows and walls.
Most can be produced and installed within 24hrs.

Call today: 920.347.1700

3400 S Packerland Dr | De Pere, WI 54115



Sure Controls Inc.TM



**We build
custom
partitions**

**We are
Robotics
experts**



We Solve Problems

1 . 800 . 844 . 8406



YOUR PERSONAL PROTECTIVE EQUIPMENT SUPPLIER

INSTANT HAND SANITIZER 4OZ | 16OZ | GALLON



- 62% Ethyl Alcohol
Meets CDC's Covid-19 Standards
- Aloe Vera Gel & Vitamin E
- Citrus Fragrance
- Kills 99.9% of Germs
- Moisturizes while it protects
- Made in USA

CALL FOR PRICING

HAND SANITIZER BOTTLES TRAVEL SIZE



As Low As

\$1.49 each

DISPOSABLE NON-MEDICAL FACE MASK



\$0.80 each

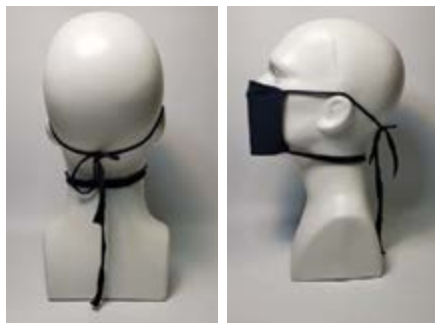
Min. Quantity: 2,000 unit
Air freight from China

USA MADE COTTON MASKS

\$3.95 each

100 Piece Minimum Order

Item#TOWMASK



Fabric: 6 oz., 2 ply, 100% preshrunk cotton
Size: 7" W x 4.5" H

NON-MEDICAL 4 LAYER COTTON MASK

With Ear Straps



\$3.40 each

Blank - Min 100

For Questions or Orders Please Contact:

Bill Niedermeyer

Direct: 920-482-1127

Team Phone: 920-482-1216

bill@towsleys.com



Acquire the technology & equipment you need now, without the large upfront investment!

Now more than ever, technology is necessary to stay in touch, mobilize your workforce, increase efficiencies and keep businesses running.

Vantage can help you to acquire essential equipment with a lease, allowing for the following benefits:

- ✓ **Fast integration**
- ✓ **Keep up with the exponential rate of change in the manufacturing landscape**
- ✓ **Enable immediate ROI**
- ✓ **Preserve cash, spreading out payments over time with no upfront investment**
- ✓ **No long-term commitment - flexibility to scale up and down as needed**

We are also offering the following solutions to help our clients strategically leverage the value in equipment and preserve cash during these uncertain times.

Deferred Payment Plans

Allowing you to receive equipment now and not start paying until your next budget year

trade IT

If you have old equipment, we will handle the disposition through our network of re-marketing partners and give you credit towards a new lease

Sale Leasebacks

Sell recently acquired equipment to Vantage, we agree to lease it back to you for an agreed upon monthly payment and cut you a check for the value of the equipment

For more information, please contact Chris Lipski:

262.357.1013 | clipski@vantagefncl.com | 101 Falls Road | Suite 405 | Grafton, WI 53024

WWW.VANTAGEFNCL.COM



The Competitive Edge.

Our Manufacturing Team delivers a distinctive competitive edge. We have the experience and depth to help manufacturers achieve success in today's global marketplace. We are not only a legal advisor - we are trusted business advisors. Whether you are a small or middle market manufacturer or a large publicly traded enterprise with international operations, we equip manufacturers with the edge they need.

To learn more about how our Manufacturing Team's strategic, personalized approach can position you to achieve success, please contact NWTC Member Bill Woodward at wwoodward@vonbriesen.com.

- Commercial Contract Negotiation
- Distribution Networks
- Financing
- Government Relations and Regulatory
- International Trade including export controls and IC-DISC utilization
- IP & Licensing
- Logistics
- Mergers and Acquisitions
- OSHA
- Product Liability
- Real Estate and Environmental Permitting
- Manufacturers' Agents and Representatives
- Risk Management
- Site Selection and Acquisition
- State Tax Credits and Incentives
- Succession Planning
- Supply Chain
- Tax
- Workforce Issues

Milwaukee • Waukesha
Madison • Oshkosh • Green Bay
Appleton • Neenah

von Briesen

von Briesen & Roper, s.c., | Attorneys at Law

vonbriesen.com/manufacturing

SUPPLIES FOR A HEALTHY WISCONSIN WORKFORCE



At WFS, we're currently stocking the following PPE:

- Hand Sanitizer
- Sanitizing Hand & Surface Wipes and Wall Dispensers
- Isopropyl Alcohol
- KN95 Masks
- 3M Niosh-P95 Respirators
- 3-Ply Masks
- Face Shields
- Thermometers
- Gloves
- Paper Products
- Soaps & Cleaners
- Buckets & Lids
- Spray Bottles
- *and a lot more!*

Products available on a limited basis. With new stock arriving daily, we're working hard to source what you need when you need it.

For detailed info, please email quotes@wifastener.com



DOING MORE FOR YOU.

Ask about our Vending, VMI, Custom Sourcing, and Worry-Free Solutions. We're your local and reliable choice for industrial supplies and more.

SERVING INDUSTRY SINCE 1985

1-(800) 752-8141 • www.wifastener.com
4449 Custer Street, Manitowoc WI 54220



6 WAYS TO SUPPORT CLEAN FACILITIES AND HEALTHY WORKFORCES

1



PROCESSING LINE BARRIERS

Transparent barriers reduce contact and maintain visibility
Fully customizable to your operations and easy to sanitize

2



COMMON AREA BARRIERS (CAB)

Modular structures separate waiting rooms & seating areas
Easy to sanitize and setup in only 15-minutes without tools

3



BIO CONTAINMENT UNITS (BCU)

Modular & expandable enclosed negative pressure spaces
Simply assembly with all necessary tools provided

4



TEMPORARY EXTERIOR STRUCTURES

Freestanding 24' x 40' structures expand usable space
Many customizable options beyond 4 exterior walls & roof

5



ANTIMICROBIAL CABINETS, SHELVES & CARTS

High-touch storage products with antimicrobial finish
Provide continuous protection against bacteria growth

6



FLOOR CLEANING EQUIPMENT & DETERGENTS

More effective and more sanitary than mop and bucket
Heavy duty detergents to target viruses and bacteria

Contact Us to find the right solutions for your needs.

contactus@woltergroupllc.com | (800) 634-9010



WISCONSIN LIFT TRUCK
ILLINOIS MATERIAL HANDLING
KENSAR EQUIPMENT COMPANY
BOHNERT EQUIPMENT COMPANY
ELLIS SYSTEMS
WOLTER POWER SYSTEMS

ZENITH

ELEVATING LOGISTICS WITH
CUSTOM SOLUTIONS

SOLUTIONS

**EXPEDITE
NATIONWIDE**



**LOCAL
CARTAGE**



**EXCLUSIVE
USE**



**PREMIUM
LTL**



MARKETS



**PAPER CONVERTING/
MANUFACTURING**



**PACKAGING/
LABEL**



**CUSTOM
MILLWORK**



**AUTOMOTIVE PARTS/
MANUFACTURING**



**FOOD/
INGREDIENTS**



**AEROSPACE/
AVIONICS**



**MARINE/
SHIPBUILDING**



**MACHINING/
FABRICATION**



**FRAGILE EQUIPMENT/
ELECTRONICS**



**MEDICAL/
DENTAL**

Our custom solutions can fulfill your critical logistics needs during the COVID-19 pandemic. We have expedited urgent PPE supplies such as masks and plexiglass shields to local manufacturers and businesses, and we are offering a 15% discount to all Alliance members.

Zenith is elevating logistics. Please contact us to learn more.

3176 Holmgren Way
Green Bay WI 54304

ZENITH EXPRESS
CUSTOM LOGISTICS SOLUTIONS

920-339-9630
expedite@zenith-express.com

Member to Member Savings Program !

NEWMA Offers a Member to Member Savings Program

If you're looking to generate business, why not make use of our great resource - your fellow NEWMA members? The M2M program acts as a vehicle to promote discounts on goods and services by and for Alliance members. Participation in the program is FREE and exclusive to members. If your business would like to offer savings to other members, contact [Ann Franz](#), Alliance Executive Director, for more information. To redeem savings from other members, check out the Member to Member Savings tab on our website at www.newmfgalliance.org.

BENEFITS

- Increased exposure, sales & revenue for your business
- Access to purchasing power of Alliance members
- Build solid partnerships that rewards both parties
- Inform Alliance members about your products & services
- Extend your brand to reach new markets
- Boost your market share

**LET YOUR
MEMBERSHIP
PAY FOR ITSELF**

Disclaimer:

All transactions are between the companies participating in the NEWMA Member to Member Savings Program. The NEW Manufacturing Alliance disclaims responsibility for all transactions, including the price, financing terms, delivery arrangements, quality of goods and services, and warranties. In addition, although the NEW Manufacturing Alliance believes the discount information is accurate at the time it is published, vendors may discontinue the discount at any time. Members should verify that the discount is still in place with the vendor prior to making a purchase or entering into a contract.