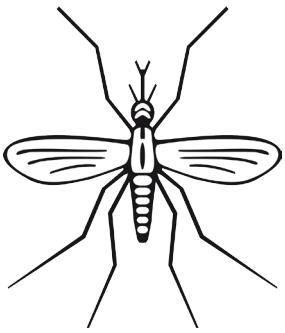


Mosquito and Stormwater Ponds Information Sheet

Did You Know...

- Catchbasins and stormwater ponds help prevent flooding by collecting stormwater runoff and either carrying it away from developed areas, or helping it soak into the ground.
- Mosquitoes breed in standing water less than 3 feet deep. Because of their depth and the amount of time they hold water, most stormwater ponds in Federal Way are not good breeding habitat for mosquitoes.
- Only female mosquitoes bite. They need the protein from blood to help them breed.
- Adult mosquitoes can live from 1 week to 3 months, depending on the species.
- Birds, fish, dragonflies, spiders, frogs, and aquatic insects all prey on mosquitoes.
- Over 40 different mosquito species can be found in Washington state.



The City's Role in Managing Mosquitoes

- City staff inspect and maintain stormwater structures on public property.
- As pesticides are harmful to water quality, the City does not treat stormwater ponds.
- Special permits from the Department of Ecology are required to treat ponds with pesticides, even on private property.

Steps to Repel Mosquitos Around Your Home

