

## "Rings of Love" © LPNQ020

### General Instructions

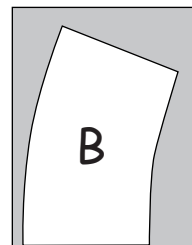
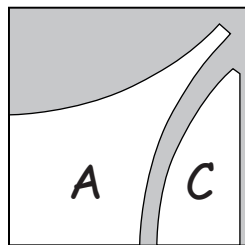
Please read through all the instructions prior to beginning.  
 $\frac{1}{4}$ " seam allowances throughout.  
 Press seams open unless otherwise indicated.

---

### Making Templates

---

- ✂️ Make a photocopy of Templates A, B, and C on page 7 of pattern.
- ✂️ Use a rotary cutter and ruler to cut (6) 8" x 8" squares, and (6) 3-3/4" x 4-3/4" rectangles from the template plastic.
- ✂️ Templates A, B, and C will each consist of template plastic joined together with double-sided tape. Join the (6) 8" squares together and the (6) 3-3/4" x 4-3/4" rectangles together.
- ✂️ Rough cut the photocopied Templates A, B, and C; coat back of templates with glue stick. Position Templates A and C on the 8" square, and Template B on the 3-3/4" x 4-3/4" rectangle. CAREFULLY trim along outside lines of template.



TIP: A 45 mm smaller rotary blade makes cutting along curves easier and smoother. Press firmly. Use the edge of a small ruler as a guide to cut around the outside edge of the templates. GO SLOWLY, BEING EXTREMELY CAREFUL WHEN CUTTING OUT TEMPLATES!

---

### Fabric Cutting

---

#### Rings Fabric:

From EACH of the 3/4 yards of coordinating fabrics for the rings:

- Cut (6) 3-3/4" x WOF strips (48 total strips)  
     Subcut (392) 3-3/4" x 4-1/2" rectangles, (49 rectangles from each of the 8 colors; these will be used to cut Template B).

#### Ring Intersection fabric:

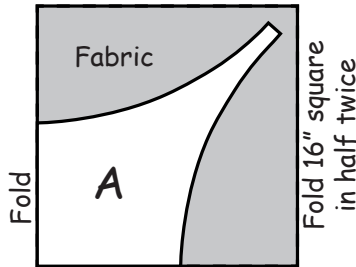
- Cut (3) 5-1/4" x WOF strips  
     Subcut (20) 5-1/4" squares, cut in half diagonally twice for a total of (80) quarter square triangles (Piece D)
- Cut (2) 4-1/8" x WOF strips  
     Subcut (9) 4-1/8" squares, cut in half diagonally twice for a total of (36) quarter square triangles (Piece E)

#### Background fabric:

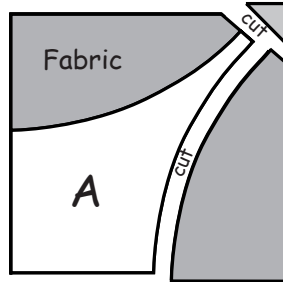
- Cut (10) 16" x WOF strips  
     Subcut each strip into (2) 16" x 16" squares (total of 20 squares) and (2) 3-1/2" x 16" rectangles (total of 20 rectangles) (will be used to cut Templates A and C)

**"Rings of Love" © LPNQ020****Template Cutting****Template A:**

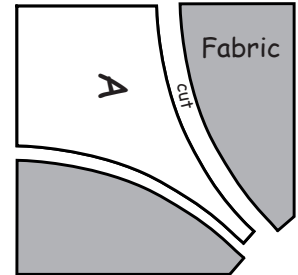
- ✂️ Fold a 16" square in half twice.



Fold  
Place the right angled corner  
of Template A on the fold lines.



Cut right side and  
top of Template A

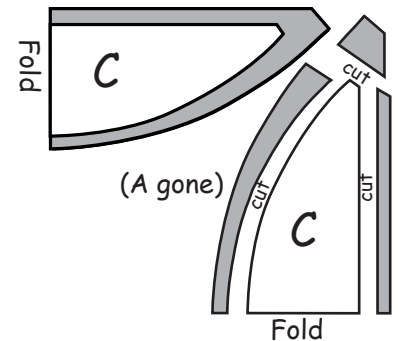


Rotate mat a quarter turn;  
cut remaining side of Template A.

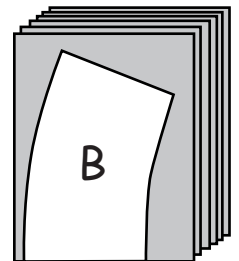
**TIP:** When cutting Template A, do not move cutout corners. From the remaining corner pieces, you will cut (4) Template Cs.

**Template C:**

- ✂️ Remove Piece A. Rotate mat so fold line of one of the remaining pieces is at the bottom. Place Template C on fold line. Cut around right side and top. Rotate mat a quarter turn and cut remaining side. Repeat on remaining corner piece
- ✂️ From the 16" blocks, you will cut a total of (20) As and (80) Cs.
- ✂️ Fold the remaining (18) 3-1/2" x 16" rectangles in half lengthwise. Place Template C on fold and cut out. You will now have a total of 98 Cs.

**Rings (Template B):**

- ✂️ Sort the 3-3/4" x 4-1/2" rectangles by color into 8 stacks. Using Template B, cut from each color (49) Bs.

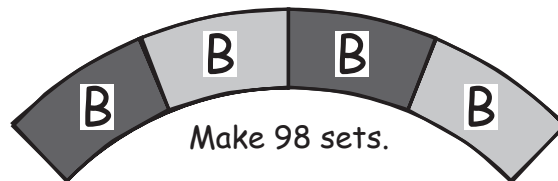


**TIP:** Cut no more than 6 pieces of fabric at a time to avoid distortion. Use a 45 mm rotary cutter for ease and a cleaner cut around curves.

### Construction

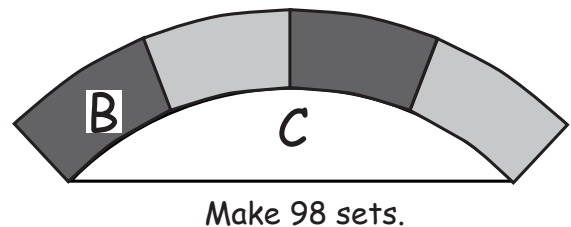
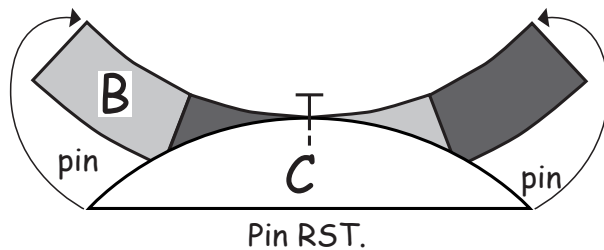
✂️ Make 98 sets of (4) Bs, varying colors in each set. Press seams open.

TIP: Use a Clover mini iron to press seams open. This will help prevent stretching the cut bias edges and curves of the rings. DO NOT IRON BACK AND FORTH.



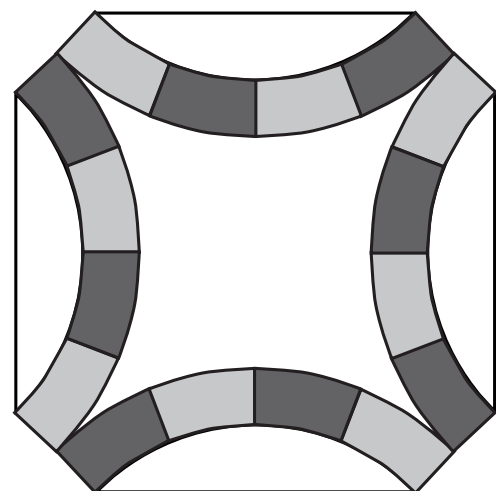
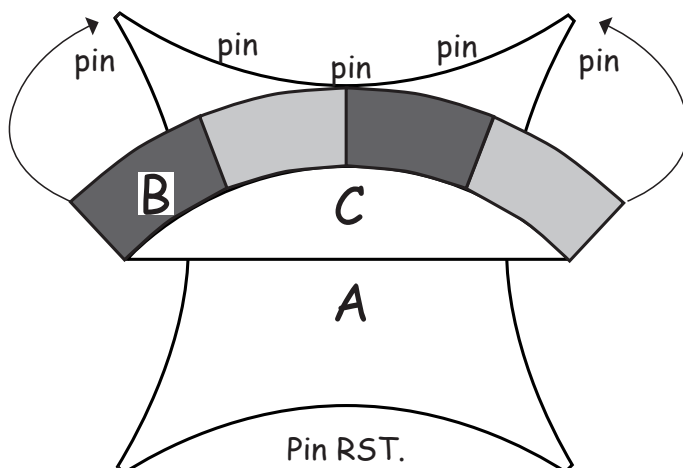
✂️ Fold a C fabric piece in half to find center; finger press center on curved edge.

✂️ Match finger pressed center of C to the center of the inside curve of a B ring, RST. Pin in place: pin center, outside corners, then between outside corners and center. Sew with C on top. PRESS SEAM TOWARDS RING.



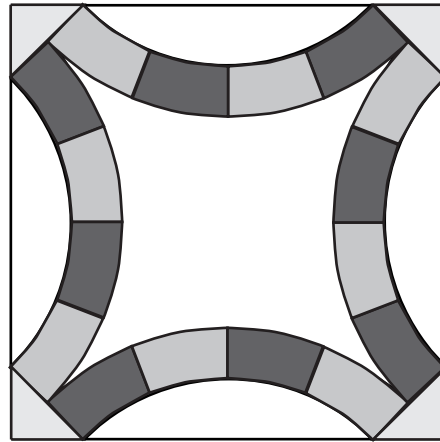
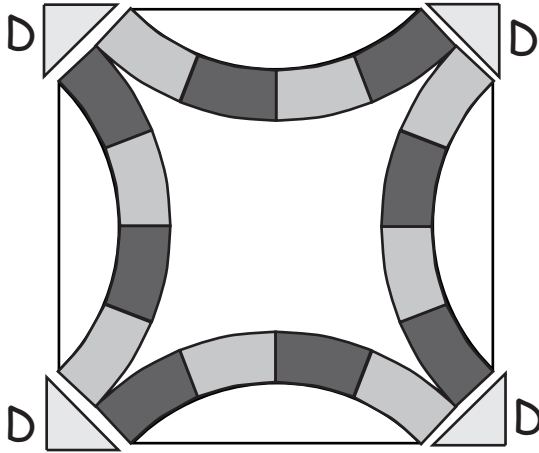
✂️ Match outside curve of a BC set to an inside curve of A fabric, RST.

✂️ Pin in place: pin center, outside corners, then between outside corners and center. Sew with BC set on top. PRESS SEAM TOWARDS RING. Repeat on three remaining inside curves of A.



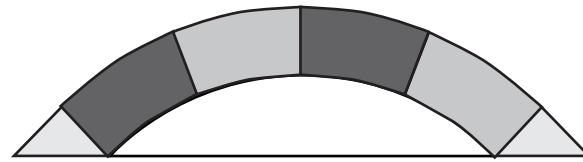
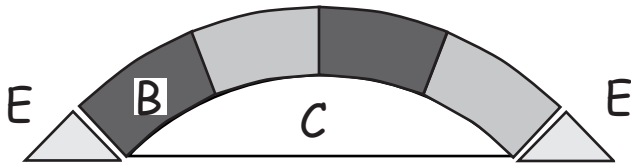
**"Rings of Love" © LPNQ020**

- ✂️ Fold a D quarter square triangle in half on long side of triangle; finger press center.
- ✂️ Match center of triangle to center of a block corner, RST; stitch. PRESS SEAM AWAY FROM RINGS. Repeat for remaining three corners. Make a total of (20) blocks.



Make 20 Blocks: 17" finished  
(17-1/2" with seam allowance)

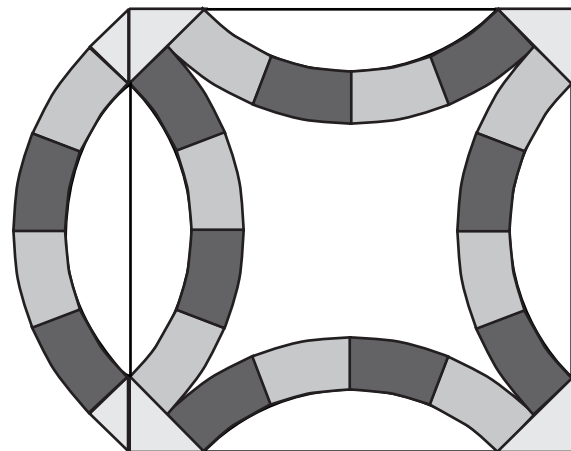
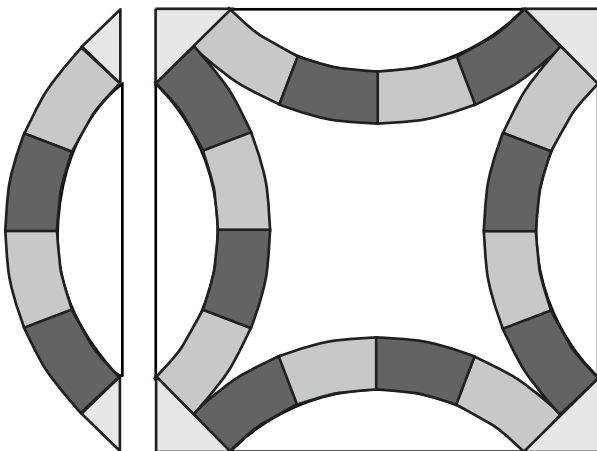
- ✂️ You have 18 BC sets remaining for outside edges of quilt top. Place the short sides of the E quarter square triangle to the ends of the remaining 18 BC sets, RST, matching outer cut edge. Stitch; PRESS SEAMS TOWARDS THE RING. Make 18 BCE sets.



Make 18 sets.

**Joining the Rows**

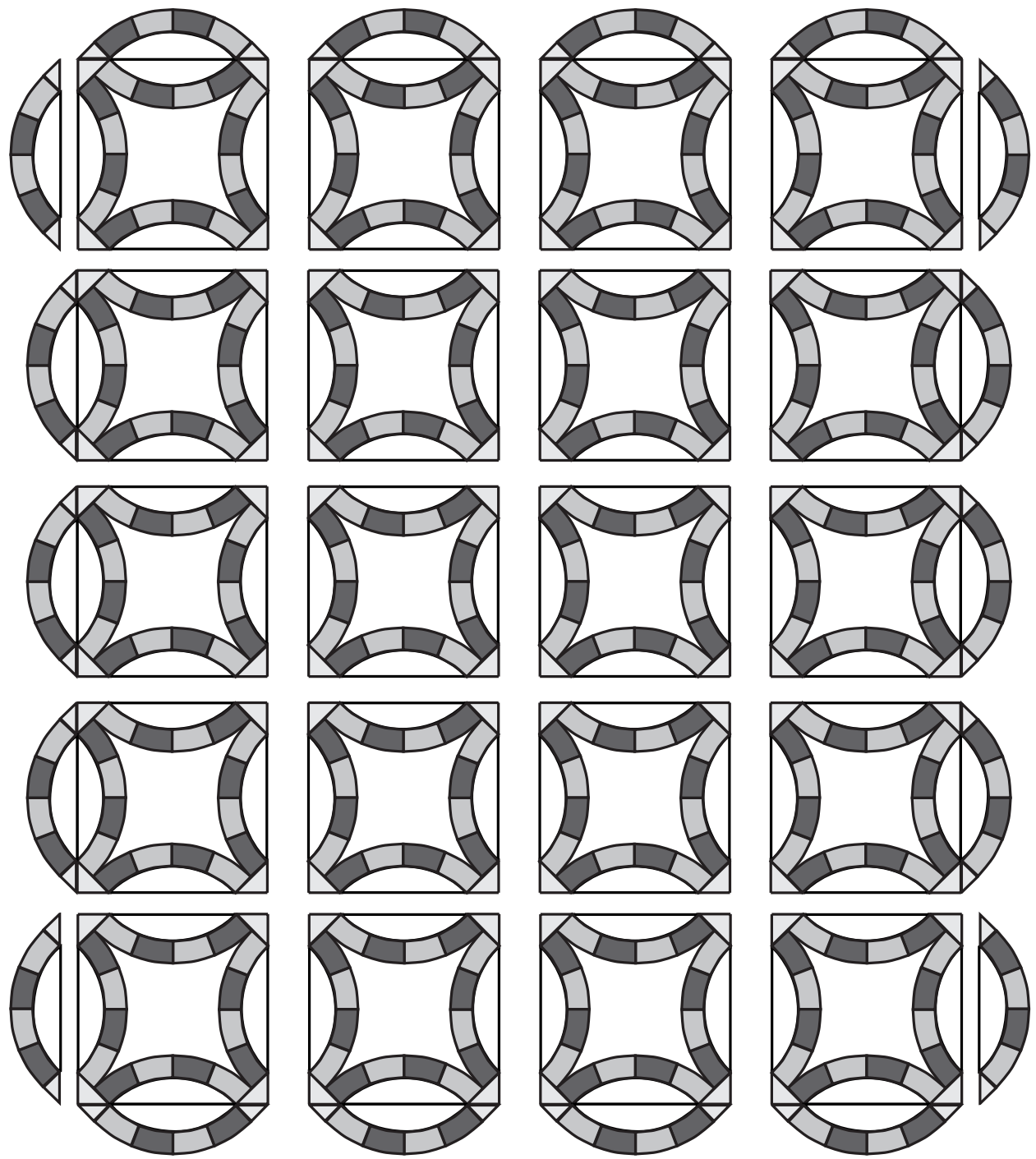
- ✂️ Sew 14 BCE sets to 14 ring blocks.



Make 14 sets.

"Rings of Love" © LPNQ020

Join rows following the diagram, adding the 4 remaining BCE sets to the outside edges of the top and bottom rows.



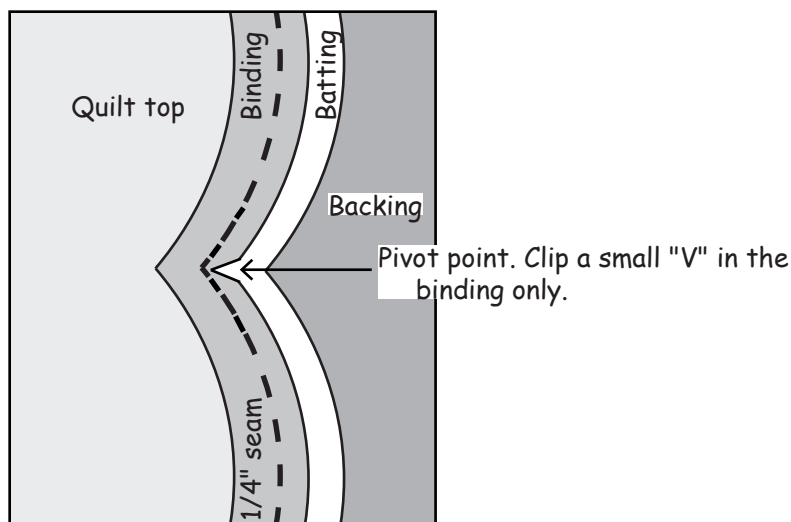
## "Rings of Love" © LPNQ020

### Quilting

- ✂️ Sandwich backing, batting and quilt top. Quilt as desired. Our quilt was quilted with a traditional cross hatch. This quilt also lends itself to beautiful quilting designs in the center of the rings.

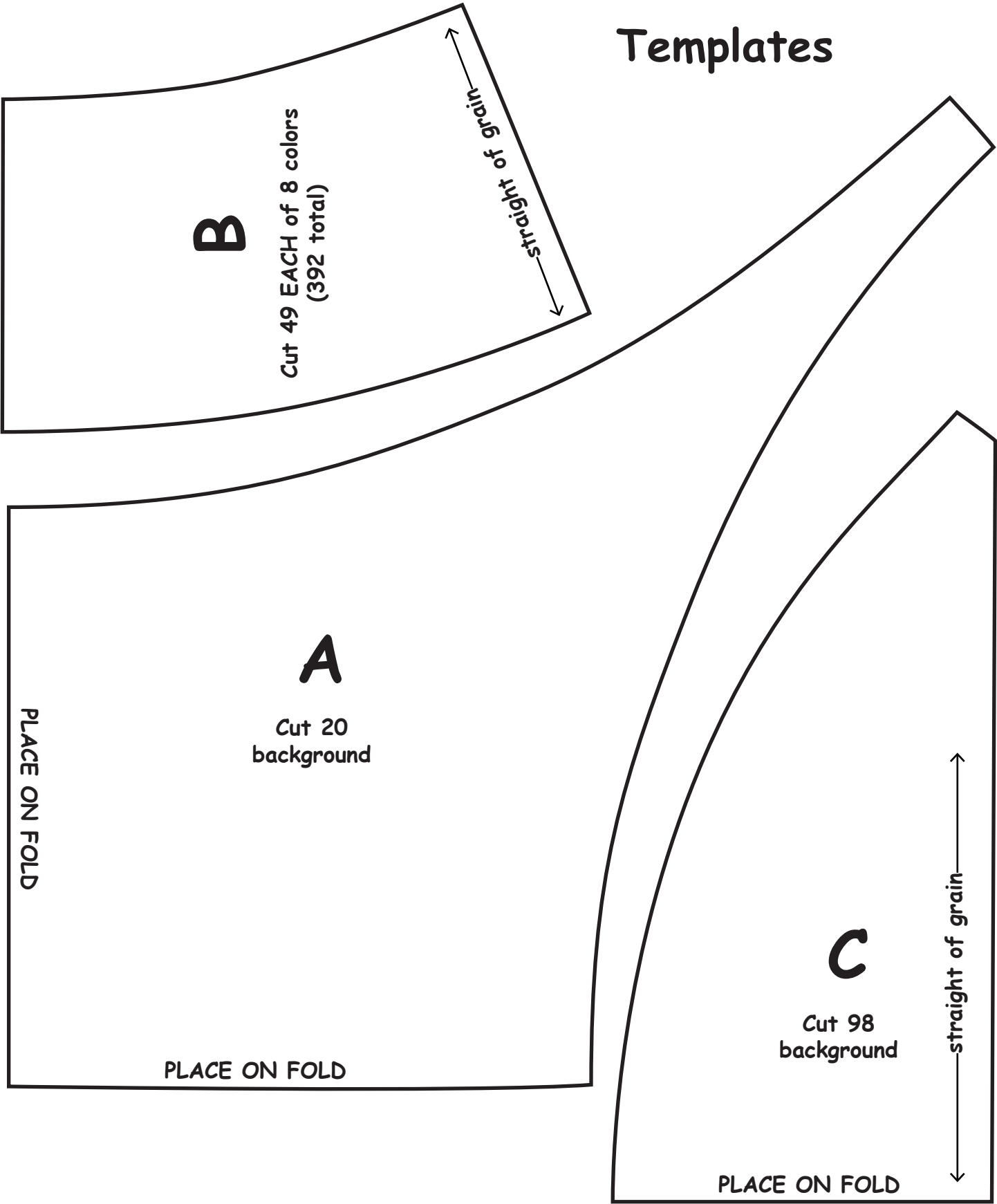
### Binding

- ✂️ Whether you prefer single-fold or double-fold binding, make sure you cut bias strips for this quilt. As our quilt top would not be heavily used and handled, we chose a single-fold bias binding. However, the gentle curves of this wedding ring are perfectly suited for a double-fold bias binding.
- ✂️ Cut 1-1/2" bias strips (for singled fold binding) or 2-1/4" bias strips (for double fold binding) to make approximately 398" of bias binding. Sew the bias strips together. (For double fold binding only, fold the binding in half lengthwise, WST, and press.)
- ✂️ Match the raw edge(s) of the bias binding to quilt along the curved edge RST; sew binding to quilt with a 1/4" seam allowance. Make sure to stop with needle down and pivot at the bottom of each "V". I like to shorten my stitch length on both sides of the "V". Continue around quilt top, joining ends of binding at start/finish point. Clip a small notch IN BINDING ONLY at each "V"



- ✂️ Trim away the batting and backing fabric, leaving enough to completely fill the finished binding. Turn binding to the back of quilt. For single fold binding only, turn under raw edge of binding 1/4". The miters will fall into place on the front and back at the "V". Hand stitch in place just covering the machine stitching line. Be careful that your stitches do not show on the front of your quilt.
- ✂️ Make a label identifying your beautiful quilt and workmanship. Place it on the back of the quilt, bottom left corner.

# Templates





## "Rings of Love" © LPNQ020

### Punch Needle General Instructions

Thank you for purchasing this Lil 'PunchNeedl' Quilts pattern. We hope you enjoy this project as much as we did.

Please read these and your punch needle instructions thoroughly. Flosses listed on this pattern should only be used as a guideline. More or less floss may be required depending upon your punching technique. Please feel free to change and experiment with needle length, numbers of strands of floss, or floss colors.

The design is traced over a light box, or by hanging the pattern in a brightly-lit window onto weavers cloth using the Pigma Micron .05 Archival Black Ink Pen.

Place your fabric in the hoop or on the frame; make sure your design is straight and square. We recommend that your hoop or gripper frame is at approximately 2" bigger than the whole design area. We prefer the gripper frames as they hold your weavers cloth consistently taut with little or no need to tighten your fabric as you stitch. The fabric must be drum tight to insure your punching is easy and even.

This design was punched using one strand of DMC Perle Cotton No. 12 for the background and rings. Needle length was 3/8". You may want to experiment to see what length is pleasing to you.

Begin punching the background, leaving a needles distance from the design line. Then fill in the individual design areas. Punching the background first allows the design to have more definition. Use the color picture as a guideline for color placement. Clip threads flush (the beginning tail, when you have finished an area, or at end of your floss) with sharp curved blade embroidery scissors. We have found that Gingher G-4514 scissors are perfect! If your floss ends on the front of your project, clip the end of the floss even with the pile of the already punched area.

On the right side of your punched embroidery, if the loops become intertwined with another color, manipulate the loops with your needle into their proper places. To help prevent this, be sure to punch perpendicular to the fabric, and angle the tip of the needle away from the loops already punched.

Your Lil' PunchNeedl' Quilt pattern may be finished by binding the edges of the punched design with cording and six strands of floss. Trim the punched design 1" from the finished edge. Lay the 1/8" cotton cording on the wrong side of the piece next to the finished edge. Fold the 1" cut edge of the weavers cloth over the 1/8" cotton cording to the back of the piece. Clip down into the "V" to ease in turning under the weavers cloth. On the right side of the piece, whip stitch over the corded edge using the #20 Chenille needle threaded with six strands of floss.

Happy punching!

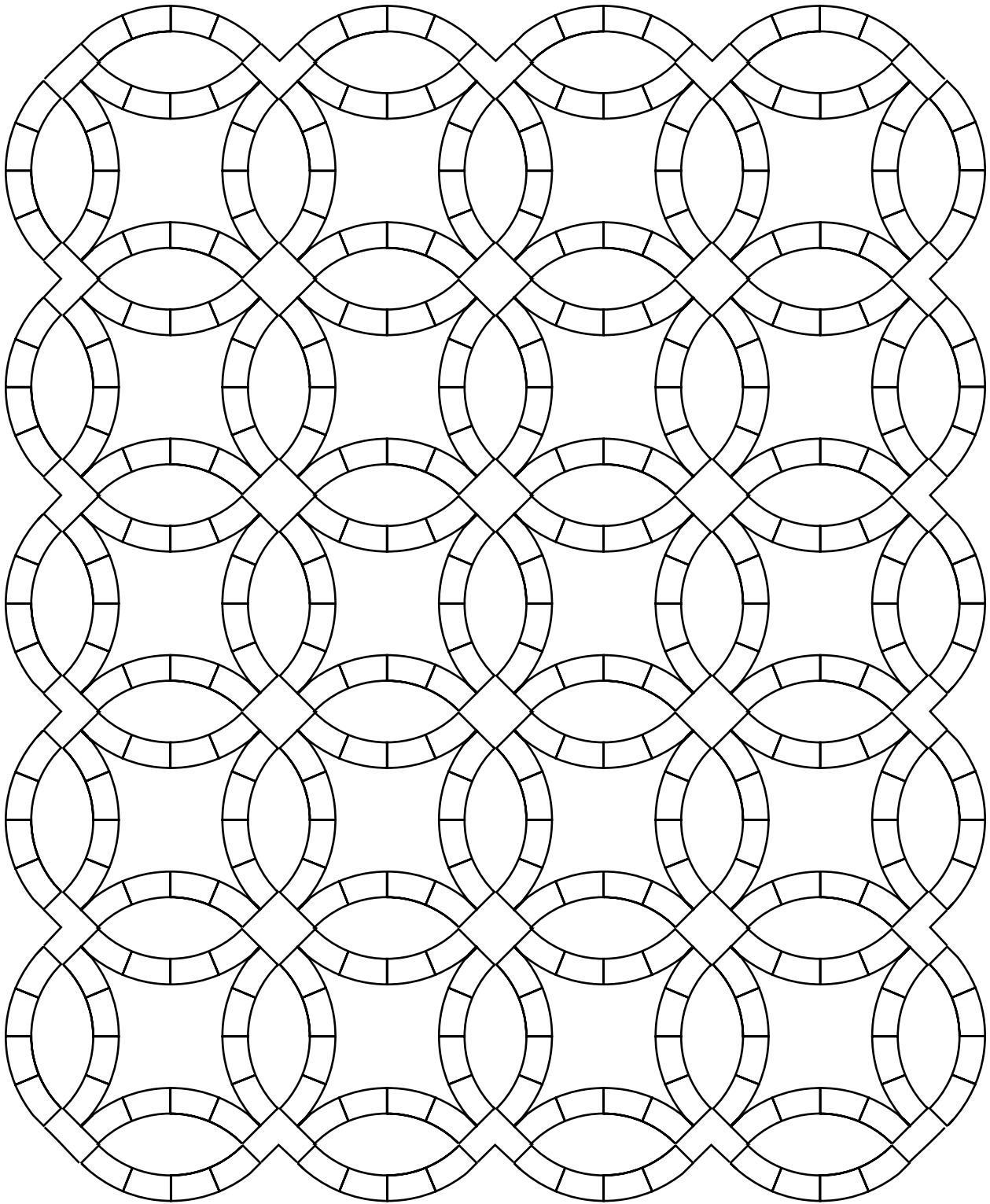
Designed by Lynn Rogers & Jan Vaine  
1730 Shadowood Lane, Suite 320, Jacksonville, FL 32207 904-725-7499

[www.grahamcrackercollection.com](http://www.grahamcrackercollection.com)

This pattern is protected by Federal copyright laws and may not be reproduced by any means without the consent of Lil' PunchNeedl' Quilts. Teachers if you are teaching a class each student must purchase a pattern. Thank you for honoring the copyright laws.



"Rings of Love" © LPNQ020



## "Rings of Love" ©

Quilt Approximately 77" x 94"

Punchneedle Quilt Approximately 6-1/2" x 8"

**Quilt Supplies** (Fabric yardages based on 42"-44" wide fabric):

3/4 yd. each of 8 coordinating fabrics for rings

3/4 yd. for ring intersections

4-5/8 yd. background

1 yd. binding

5-3/4 yd. backing OR 3 yds. of 90" wide fabric

3 sheets of 12" x 18" template plastic

glue stick

double sided tape

A rotating 12" Olfa Cutting Mat (optional...but makes cutting Fast & Easy!)

45 mm rotary cutter

**Punch Needle Supplies** (Our sample was punched with DMC Perle Cotton

12, but would be equally beautiful in DMC Perle Cotton 8)

Background: 2 balls Ecru

Rings: 1 ball each #223, #224, #415, #524, #758, #927, #932, #3042

Binding: 2 skeins floss #932

Fat quarter of Weavers cloth

1/8" cotton cording

12" interlocking embroidery hoop or 12" gripper frame

CTRNEEDLEWORKS™ Punchneedle, or punch needle of choice

Pigma Micron .05 Archival Black Ink Pen for tracing design

Our quilt was made with Jo Morton fabrics by Andover Fabrics

[www.andoverfabrics.com](http://www.andoverfabrics.com)

and Moda Muslins [www.unitednotions.com](http://www.unitednotions.com)

The DMC Corporation [www.dmc-usa.com](http://www.dmc-usa.com)



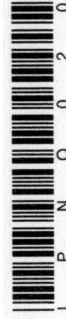
Designed by Lynn Rogers & Jan Vaine

1730 Shadowood Lane, Suite 320

Jacksonville, FL 32207

904-725-7499

[www.grahamcrackercollection.com](http://www.grahamcrackercollection.com)



## "RINGS OF LOVE"



Quilt Approximately 77" x 94"

Punchneedle Quilt  
Approximately 6-1/2" x 8"

LPNQ020