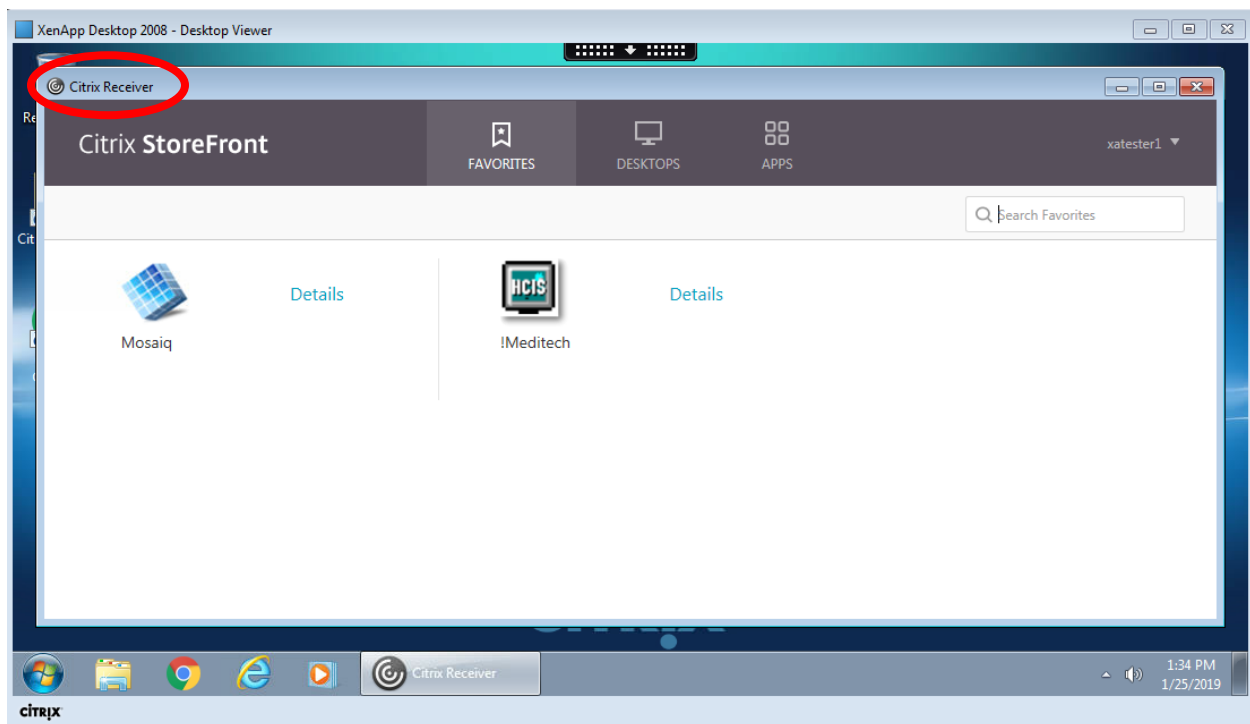


Using XenApp Desktop 2008:


Citrix XenApp Desktop allows you to enable session sharing between a published desktop and application. This means that a published app available locally in their published desktop will be started within the same session. This avoids an additional logon cycle allowing the application to launch faster. This is not only beneficial for user experience; it also saves resources in your environment as sessions are consolidated.

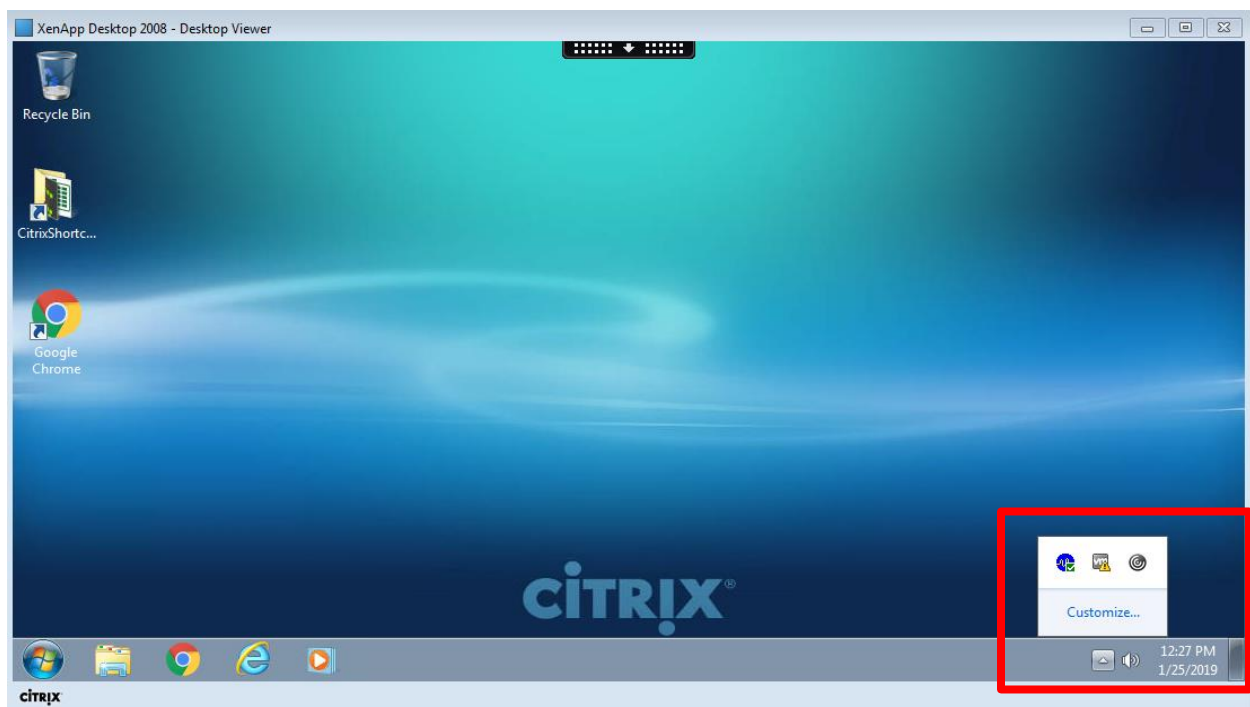
1. Log in to storefront and then click the DESKTOPS tab.
2. Click XenApp Desktop 2008 desktop.
3. The first time you logged in to the XenApp Desktop 2008, the Citrix Receiver window will show up (see sample image below). You would know the Citrix Receiver window when you see the words "Citrix Receiver" at the top left corner within the XenApp Desktop 2008.




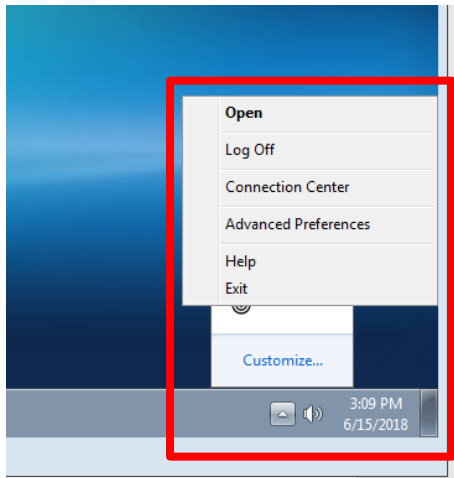
4. Close the Citrix Receiver window.
5. With XenApp 7.15, the only applications you would see in the start menu are the applications you have in your Storefront favorites.



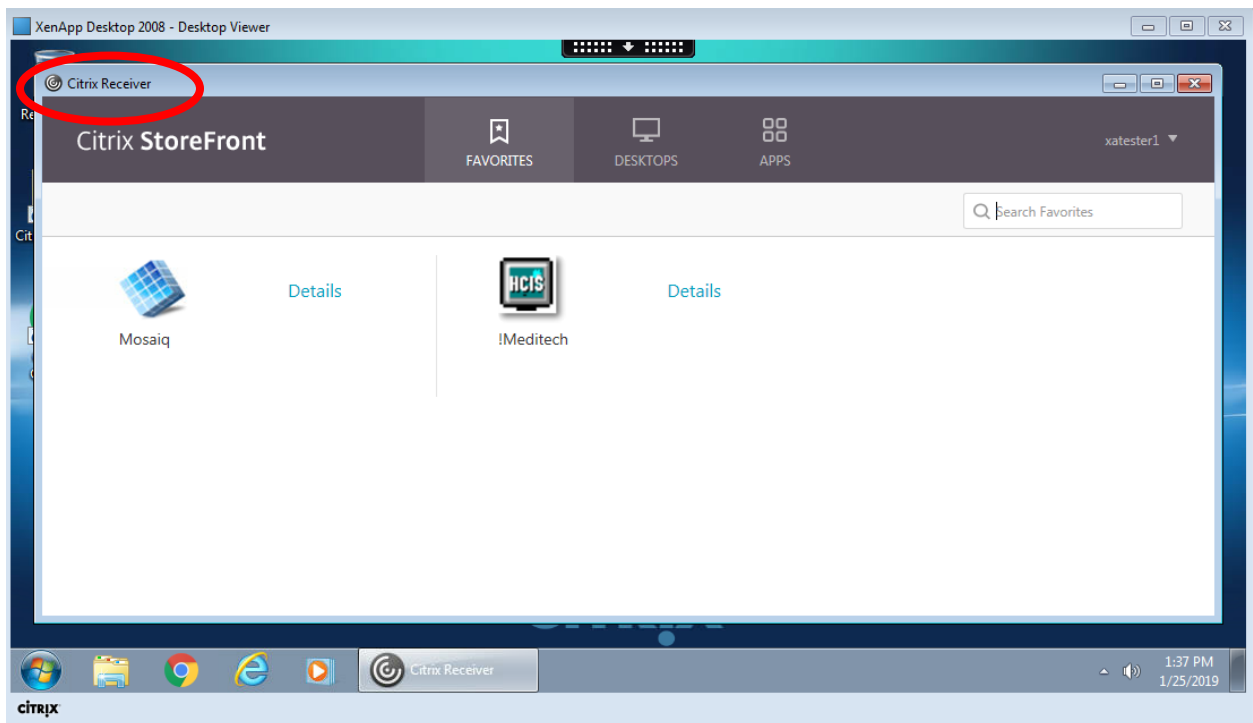
6. To add applications to the start menu, simply go to the taskbar, click the arrow pointing up, and look for the citrix receiver icon 



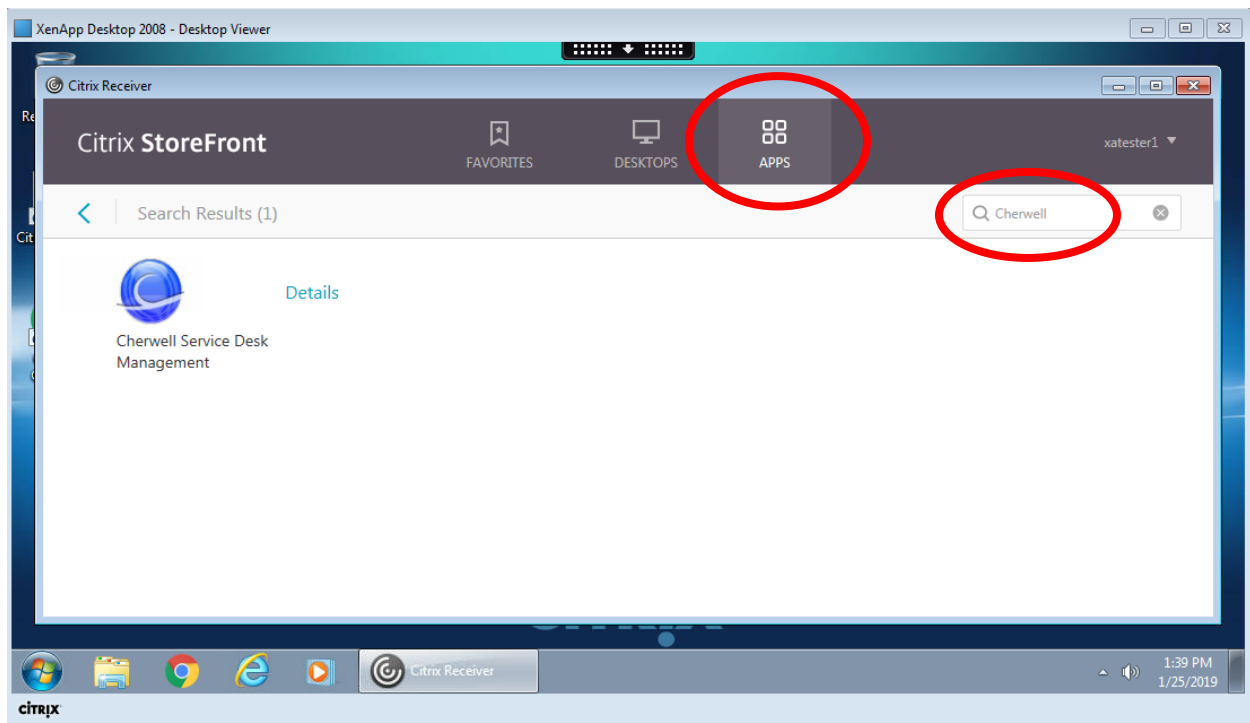
7. Right click on the citrix receiver icon , and click Open.



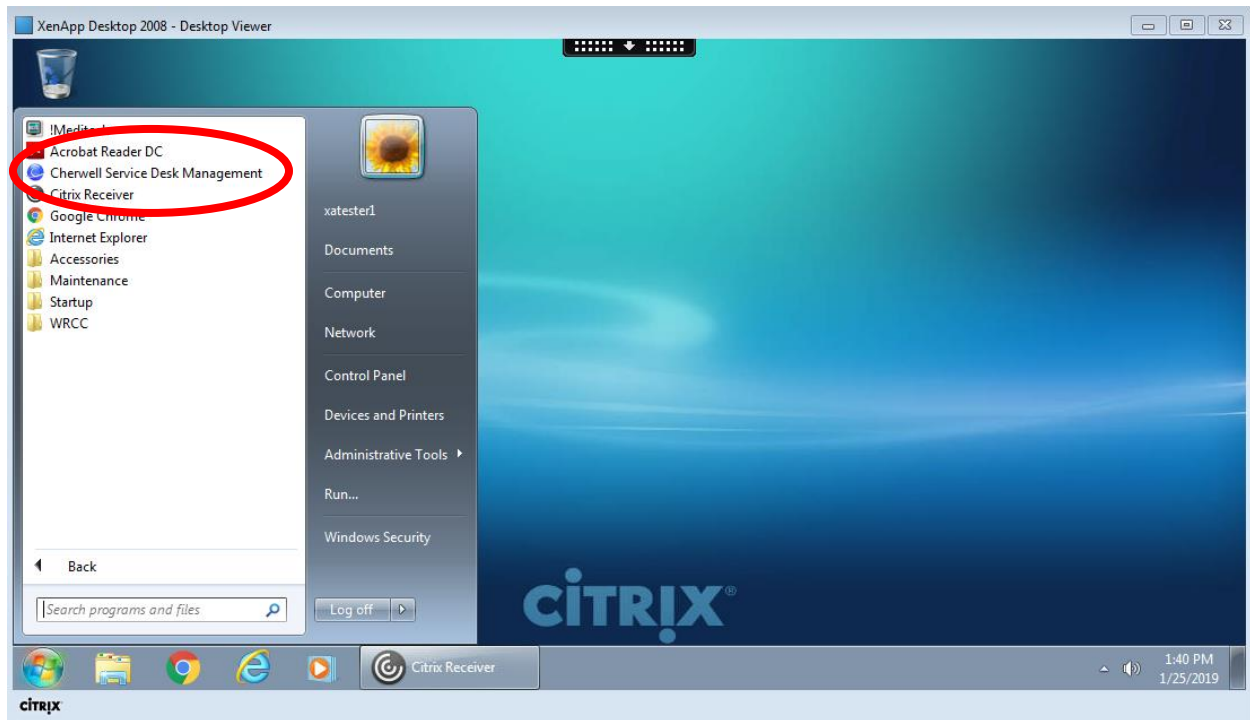
8. The Citrix Receiver page should show up (see sample image below).



9. To add applications to the Favorites tab which will eventually show up in the start menu, simply click the APPS tab and search for the application.

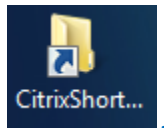


10. Click Details beside the application icon. Then click Add To Favorites.
11. You may now close or minimize the Citrix Receiver window.
12. When you go back to the start menu, you should see the application that you have just added to your Favorites. Example below shows the Cherwell Service Desk Management application that was added to the Favorites which also shows in the start menu.



Using Citrix Shortcuts:


When using XenApp Desktop, you will find a shortcut to a folder on the desktop called CitrixShortcuts.



The folder contains shortcuts to commonly used applications available “locally” on XenApp Desktop such as Outlook, Word, Excel, Skype, etc. When you open these applications by double-clicking their respective shortcuts, the application will be opened from the same server as the XenApp Desktop 2008 you are on. This is called application session sharing. It saves the costs of launching new sessions helping applications start faster and use fewer resources. It also offers other features that involve the clipboard such as copy-paste operations and Desktop sharing in Skype.

Dual monitor screen setup:

1. If the XenApp Desktop does not span across two monitors when it is on Full screen mode, click the

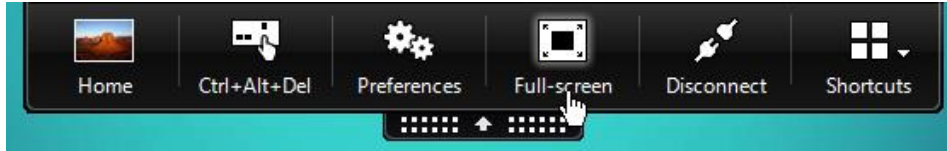
XenApp toolbar  found at the top of XenApp Desktop.

2. Click Window
3. While on Window mode, expand the XenApp Desktop by placing your mouse on the edge of the window. The mouse cursor should turn in to dual arrow.



4. Click and hold the mouse then drag it so the window stretches on to the second monitor.
5. At this point, you should now have stretched the XenApp Desktop window between the two monitors.

6. Click the XenApp toolbar again and click Full screen.



7. Log out from the XenApp Desktop.
8. Log back in and click the XenApp toolbar.
9. Click Full-screen. XenApp Desktop should now span across two monitors properly.