

Centennial Anniversary Service

April 26, 2026 | 9:30 a.m.

100 YEARS

REACHING OUT TO CHRIST IN A CHANGING WORLD



1926, Building 1



1926, Building 2



1950



1970

Como Park Lutheran Church, ELCA, RIC

Reaching out in Christ to a changing world.

1376 Hoyt Ave W | Saint Paul, MN 55108

(651) 646-7127

www.ComoParkLutheran.org



We welcome all to worship here: those who are strong in faith and those who are seeking, those who are hurting and those who give comfort; all who are drawn to worship, community, and faith.

We acknowledge and celebrate the rich diversity within and around us. As a community rooted in the body of Christ, we commit ourselves to creating a space where people of all races, ages, ethnicities, abilities, sexual orientations, gender identities, and gender expressions are not only included but deeply valued and seen as essential to our shared journey.

Together, we value human diversity as a divine gift and blessing—a reflection of God’s boundless creativity and love. Because of this, we commit ourselves in ministry to fully embracing all people and advancing racial equity in our ministry.

We recognize that we hold a variety of beliefs, perspectives, and lived experiences; and yet we gather in Christ to worship God together. If you have questions, feedback, or needs for assistance, please ask. We seek to grow together in ministry, community and faith, and we are glad that you are here with us today.

~ The People of Como Park Lutheran Church

TODAY’S COFFEE HOUR
will immediately follow the service.

Please join us for some coffee and light snacks in the Narthex.

This service will be broadcast live on YouTube
and recorded for later viewing.
www.youtube.com/c/ComoParkLutheranChurch

TRIPTYCH FOR ORGAN

Triptych for Organ was commissioned by Como Park Lutheran Church, St. Paul, Minnesota, to celebrate the congregation's centennial. A massive oak carving (35 x 2 feet) by Arthur Stok hangs above the entrance doors to the church's sanctuary. The carving is based on the parable of the sower in the third chapter of Matthew's Gospel. The first movement of the triptych musically embraces the ideas of welcome (a grand entrance) plus themes inherent in the parable: seed falling on various kinds of soil, weeds growing, birds singing. The second movement is a short trio sonata with a fanciful feel. The church is located very close to Como Park with its lovely green areas, a conservatory and a zoo – hence the movement might be called “A Walk in the Park” with musical turns and surprises. The final movement is based on an original hymn tune that is paired with Delores Dufner's divine text “The Word of God is Source and Seed.” The movement thus forms a bookend to the opening movement not only touching on ideas from Matthew but also leading the listener out into the world rejoicing.



Regular - Liturgist
Bold - Congregation



ORDER OF WORSHIP

THE GATHERING

PRELUDE

Triptych for Organ

Mark Sedio

Entrata – Trio – Finale

Commissioned by Como Park Lutheran in celebration of 100 years of ministry.

WELCOME, GREETING, AND ANNOUNCEMENTS

✠CONFESSIOIN AND FORGIVENESS

In the name of the Father, and of the Son, and of the Holy Spirit.

Amen.

Almighty God, to whom all hearts are open, all desires known, and from whom no secrets are hid: cleanse the thoughts of our hearts by the inspiration of your Holy Spirit, that we may perfectly love you and worthily magnify your holy name, through Jesus Christ our Lord.

Amen.

Let us confess our sins in the presence of God and one another.

~ Silence is kept for reflection. ~

Most merciful God,

We confess that we are captive to sin and cannot free ourselves. We have sinned against you in thought, word, and deed, by what we have done and by what we have left undone. We have not loved you with our whole heart; we have not loved our neighbors as ourselves. For the sake of your Son, Jesus Christ, have mercy on us. Forgive us, renew us, and lead us, so that we may delight in your will and walk in your ways, to the glory of your holy name. Amen.

In the mercy of almighty God, Jesus Christ was given to die for us, and for his sake God forgives us all our sins. As a called and ordained minister of the church of Christ, and by his authority, I therefore declare to you the entire forgiveness of all your sins, in the name of the Father, and of the Son, and of the Holy Spirit.

Amen.

✠OPENING HYMN

The Word of God Is Source and Seed



1. The Word of God is source___ and seed; it comes to die and sprout and grow.____
2. The Word of God is breath___ and life; it comes to heal and wake and save.____
3. The Word of God is flesh___ and grace who comes to sing, to laugh and cry.____



So make your dark earth wel - come-warm; root deep the grain God bent to sow.
So let the Spir - it touch___ and mend and rouse your dry bones from their grave.
So dare to be as Je - sus was, who came to live and love and die.



In the Lord let us re - joice,____ oh, let us re - joice!____

✠THE APOSTOLIC GREETING (2 Corinthians 13:14)

The grace of our Lord Jesus Christ, the love of God, and the communion of the Holy Spirit be with you all.

And also with you.

✠KYRIE

ELW pg. 193-194



In peace, let us pray to the Lord.



Lord, have mer - cy.



For the peace from a - bove, and for our sal - vation, let us pray to the Lord.



Lord, have mer - cy.



For the peace of the whole world, for the well - being of the church of



God, and for the u - ni - ty of all, let us pray to the Lord.



Lord, have mer - cy.



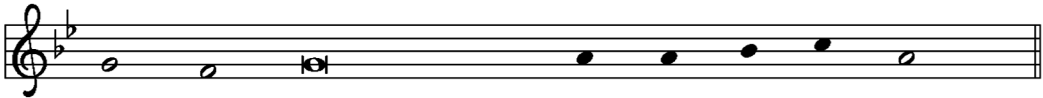
For this ho - ly house, and for all who offer here their wor - ship and



praise, let us pray to the Lord.



Lord, have mer - cy.



Help, save, comfort, and de - fend us, gra - cious Lord.



A - men.

✠GLORY TO GOD

ELW pg. 195-196



Glo - ry to God in the high - est, and peace to God's peo - ple on earth.



1 Lord God, heav'n-ly King, al - mighty God and Fa - ther, we



wor-ship you, we give you thanks, we praise you for your glo - ry.



Glo - ry to God in the high - est, and peace to God's peo - ple on earth.



2 Lord Je - sus Christ, on - ly Son of the Fa - ther, Lord God, Lamb of



God, you take a - way the sin of the world: have mer - cy on us;



you are seat - ed at the right hand of the Fa - ther: re - ceive our prayer.

Refrain



Glo-ry to God in the high - est, and peace to God's peo-ple on earth.

3 For you a - lone are the Ho - ly One, you a - lone are the

Lord, you a - lone are the Most High, Je - sus Christ, with the

Ho - ly Spir - it, in the glo - ry of God the Fa - ther.

A - men, a - men.

✠PRAYER OF THE DAY

Let us pray...

O God, you have called your servants to ventures of which we cannot see the ending, by paths as yet untrodden, through perils unknown. Give us faith to go out with good courage, not knowing where we go, but only that your hand is leading us and your love supporting us; through Jesus Christ our Lord. Amen.

THE WORD

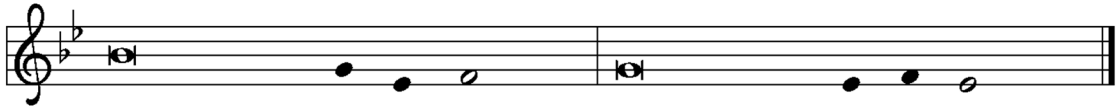
FIRST READING: 1 Chronicles 29:10-13

¹⁰Then David blessed the Lord in the presence of all the assembly; David said: "Blessed are you, O Lord, the God of our ancestor Israel, forever and ever. ¹¹Yours, O Lord, are the greatness, the power, the glory, the victory, and the majesty; for all that is in the heavens and on the earth is yours; yours is the kingdom, O Lord, and you are exalted as head above all. ¹²Riches and honor come from you, and you rule over all. In your hand are power and might; and it is in your hand to make great and to give strength to all. ¹³And now, our God, we give thanks to you and praise your glorious name.

The word of the Lord.

Thanks be to God.

❖❖ Psalm 103:1-5



- ¹ Bless the Lord, | O my soul,
and all that is within me, bless God's | holy name.
- ² **Bless the Lord, | O my soul,
and forget not | all God's benefits—**
- ³ who forgives | all your sins
and heals all | your diseases;
- ⁴ **who redeems your life | from the grave
and crowns you with steadfast | love and mercy;**
- ⁵ who satisfies your desires | with good things
so that your youth is renewed | like an eagle's.
- ¹ **Bless the Lord, | O my soul,
and all that is within me, bless God's | holy name.**

SECOND READING: Philippians 4:4-9

⁴ Rejoice in the Lord always; again I will say, Rejoice. ⁵ Let your gentleness be known to everyone. The Lord is near. ⁶ Do not worry about anything, but in everything by prayer and supplication with thanksgiving let your requests be made known to God. ⁷ And the peace of God, which surpasses all understanding, will guard your hearts and your minds in Christ Jesus.

⁸ Finally, beloved, whatever is true, whatever is honorable, whatever is just, whatever is pure, whatever is pleasing, whatever is commendable, if there is any excellence and if there is anything worthy of praise, think about these things. ⁹ Keep on doing the things that you have learned and received and heard and seen in me, and the God of peace will be with you.

The word of the Lord.

Thanks be to God.

GOSPEL VERSE

Exultation

Matthew Compton

Joyful Ringers

✠GOSPEL: Matthew 5:13-16

The Holy Gospel according to Saint Mathew the Fifth Chapter.

Glory to you, O Lord.

¹³ "You are the salt of the earth; but if salt has lost its taste, how can its saltiness be restored? It is no longer good for anything, but is thrown out and trampled under foot. ¹⁴ "You are the light of the world. A city built on a hill cannot be hid. ¹⁵ No one after lighting a lamp puts it under the bushel basket, but on the lampstand, and it gives light to all in the house. ¹⁶ In the same way, let your light shine before others, so that they may see your good works and give glory to your Father in heaven.

The Gospel of the Lord.

Praise to you, O Christ.

CHILDREN'S MESSAGE

Mary Ann Schmidt

(Jesus Loves Me! ELW 595)

SERMON

Pastor Martin Ericson

✠HYMN OF THE DAY

The Church's One Foundation

ELW 654

✠APOSTLES' CREED

I believe in God, the Father almighty,
creator of heaven and earth.

I believe in Jesus Christ, God's only Son, our Lord,
who was conceived by the Holy Spirit,
born of the virgin Mary,
suffered under Pontius Pilate,
was crucified, died, and was buried;
he descended to the dead.

On the third day he rose again;
he ascended into heaven,
he is seated at the right hand of the Father,
and he will come to judge the living and the dead.

I believe in the Holy Spirit,
the holy catholic church,
the communion of saints,
the forgiveness of sins,
the resurrection of the body,
and the life everlasting.

Amen.

✠PRAYERS

... Lord, in your mercy,
... **hear our prayer.**

✠THE PEACE

The peace of Christ be with you always.
And also with you.

(In sharing God's Peace we share with each other our hope for God's blessing by shaking hands, or turning to one another and nodding, or bumping fists and saying "God's peace be with you.")

THE MEAL

OFFERING

Make a Joyful Noise

John Helgen

CPLC Anniversary Choir

Electronic offerings can be made using smart phones and tablet devices by going to www.ComoParkLutheran.org and clicking on the "donate" button. You may also use the giving kiosk in the narthex located by the staircase.



✠OFFERTORY PRAYER

Let us pray...

Blessed are you, O God, ruler of heaven and earth. Day by day you shower us with blessings. As you have raised us to new life in Christ, give us glad and generous hearts, ready to praise you and to respond to those in need, through Jesus Christ, our Savior and Lord. Amen.

✧THE GREAT THANKSGIVING

The Lord be with you. And al - so with you.
Lift up your hearts. We lift them to the Lord.
Let us give thanks to the Lord our God.
It is right to give our thanks and praise.

The image shows a musical score for 'The Great Thanksgiving' in G major, 4/4 time. It consists of four staves of music. The first staff has the lyrics 'The Lord be with you. And al - so with you.' The second staff has 'Lift up your hearts. We lift them to the Lord.' The third staff has 'Let us give thanks to the Lord our God.' The fourth staff has 'It is right to give our thanks and praise.' The music is written in a simple, melodic style with a treble clef and a key signature of one sharp (F#).

It is indeed right, our duty and our joy, that we should at all times and in all places give thanks and praise...

... we praise your name and join their unending hymn:

✧HOLY, HOLY, HOLY (Isaiah 6:3)

Ho - ly, ho - ly, ho - ly Lord, God of pow - er and
might, heav-en and earth are full of your glo - ry. Ho -

The image shows a musical score for 'Holy, Holy, Holy' in G major, 4/4 time. It consists of two staves of music. The first staff has the lyrics 'Ho - ly, ho - ly, ho - ly Lord, God of pow - er and' and the second staff has 'might, heav-en and earth are full of your glo - ry. Ho -'. The music is written in a simple, melodic style with a treble clef and a key signature of one sharp (F#).



san - na in the high-est, ho - san - na in the high - est.



Bless-ed is he who comes in the name of the Lord. Ho -



san - na in the high-est, ho - san - na in the high - est.

✠WORDS OF INSTITUTION (1 Corinthians 11:23-26)

In the night in which he was betrayed...
... Do this for the remembrance of me.

✠THE LORD'S PRAYER (Matthew 6:9-13; Revelation 11:15)

Lord remember us in your kingdom and teach us to pray...

**Our Father in heaven,
hallowed be your name,
your kingdom come,
your will be done,
on earth as in heaven.**

Give us today our daily bread.

**Forgive us our sins
as we forgive those who sin against us.**

**Save us from the time of trial
and deliver us from evil.**

**For the kingdom, the power,
and the glory are yours,
now and forever.**

Amen.

DISTRIBUTION

All who believe Christ is truly present in the sacrament are invited to receive communion. At the server, hold out the flat of your palm to receive the wafer. If you desire gluten-free wafers, simply say to the first server “gluten-free.” Then, step to the second server and take the wine in the small cup. The cups hold red wine and grape juice. If you are allergic to grapes, you are free to receive only the bread, knowing that Christ is fully present within each element. Children who do not yet commune will receive a blessing from pastor or first server.

LAMB OF GOD (John 1:29)

ELW pg. 201



Lamb of God, you take a - way the sin of the world; have mer - cy on us. Lamb of God, you take a - way the sin of the world; have mer - cy on us. Lamb of God, you take a - way the sin of the world; grant us peace, grant us peace.

COMMUNION HYMN

Father, We Thank You

ELW 478

✠POST COMMUNION BLESSING

The body and blood of our Lord Jesus Christ strengthen you
and keep you in his grace.

Amen.

✠POST COMMUNION PRAYER

We give you thanks, O God, that you make your home with us, bringing
heaven to earth in this holy meal. Fill us with your Spirit as we go from here,
that we may wipe away tears, tend to those in mourning and pain, seek the
healing of the nations, and bring to earth the presence of your Son, Jesus
Christ, our Savior and Lord.

Amen.

THE SENDING

✠BENEDICTION (Numbers 6:24-26)

The Lord bless you and keep you.

The Lord's face shine on you with grace and mercy.

The Lord look upon you with favor and give you peace.

Amen.

✠CLOSING HYMN

Jesus Shall Reign

ELW 434

✠DISMISSAL

Go in peace. Serve the Lord.

Thanks be to God.

POSTLUDE

Grand Choeur for organ and brass

Dubois arr. Brockman

Permission to reprint, podcast, and / or stream the music in this service obtained from ONE LICENSE with license #A-703921. All rights reserved.

The Word of God is Source and Seed Text: Delores Dufner, OSB © 1993 Sisters of St. Benedict St. Joseph, MN; admin Augsburg Fortress

SOURCE AND SEED by Mark Sedio © 2025 Mark Sedio, used by permission

The Church's One Foundation arr. Jeremy Bankson © 2004 Birnamwood Publications

Jesus Shall Reign arr. Jeremy Bankson © 2019 Birnamwood Publications

Grand Choeur by Theodore Dubois, arr. David Brockmann © 2017 Birnamwood Publications

Father, We Thank You Text: Didache, 2nd cent; para. F. Bland Tucker © Church Pension Fund

RENDEZ A DIEU Music: attr. Louis Bourgeois, public domain

Exultation by Matthew Compton © 2018 Handbell Musicians of America/AGEHR

Trypych by Mark Sedio © 2025 Mar Sedio, used by permission

ASSISTING WITH WORSHIP

Pastor: Martin Ericson

Director of Music Ministry: Tom Ferry

Accent Brass: Alex Kahler—Trumpet I

Doug Bradley—Trumpet II

Michelle Kahler—Horn

Paul Thomsen—Trombone

Elizabeth Berrigan—Tuba

THANKS TO OUR VOLUNTEERS

Date	April 26, 2026
Time	9:30 AM
Acolyte	Kyle Bergstrom
Communion Prep	Fay Cushman
Assisting Minister	Jonathan Nye
Communion Asst 1	Sasha Weber
Communion Asst 2	Elizabeth Weber
Greeter	Janet Pankonin
Coffee Servers	Jonathan Nye & Geri Jwanouskos
Children's Message	Mary Ann Schmidt
Reader	Sam Schultz
Liturgist	Rebecca Numainville
Ushers	Family Team Weber
Welcome Desk	Val Negaard
Bus Helper	Shirley Dingman
Bus Driver	Lowell Lundy
Video Tech	Ken Purdham

USHER TEAM

Family Team Weber: Elizabeth & Rocky, Douglas and Sasha

Please pray for...

Pam B.	Tyler F. (brother-in-law of Ginger F.)
Dorothy E.	J.J. K. (great grandson of Bill H.)
Kathy H.	Joe (friend of Sandra H.)
Ann L.	Cheryl & Jim (quilter & husband)
Heather Q.	Nichole (friend of Como Connects)
Ruth R.	Mary C.
Gina K.	... and all in need of prayers

We welcome names of members, family, and friends on our prayer list.

✘ ✘ ✘

Serving in the Military

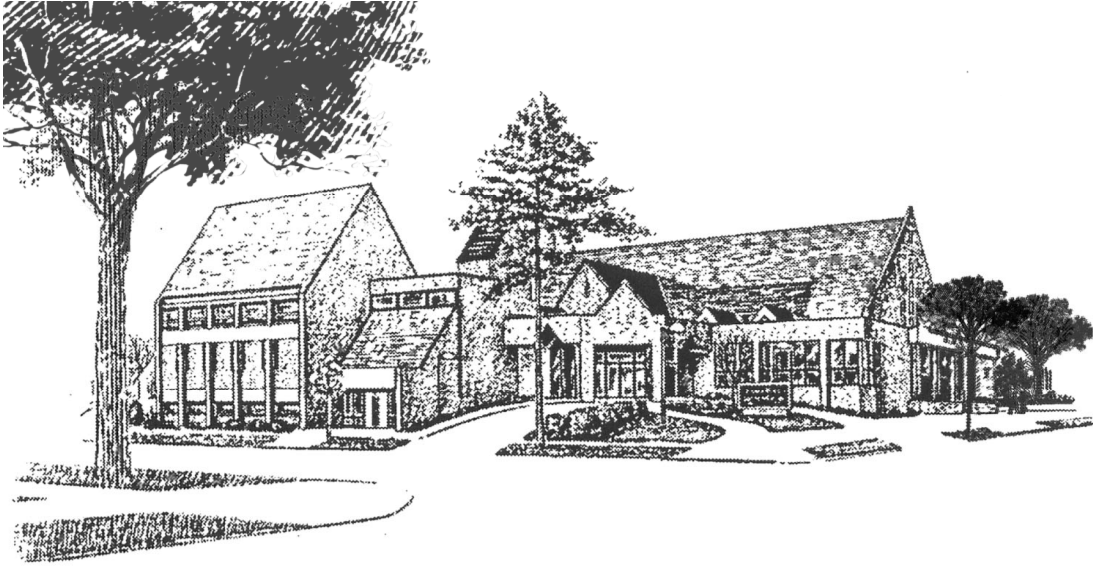
Dane Beecham, Jonathan Lund, Kristian Nelson
... and all others who serve

✘ ✘ ✘

We pray regularly for all members and friends of our congregation.

This week in worship, we pray for:

Mark & Bobbie Moormann, Elliot, Carter
Dominic & Julia Morrison, Declan, Eilidh
Darren & Jennifer Moseley, Brooke, Allison, Lindsey
Howard & Kira Mostad, Cecelia
Roy & Arlene Muscatello
Val Negaard
Drew Nelson, Ethan, Johnny



To Our Como Park Lutheran Family,

Thank you for being part of this day. Your presence helps mark 100 years of Como Park Lutheran Church.

In the pages that follow, you'll find two reflections: one on the congregation's pastoral history, and one on its outreach and social ministries. Together, they tell the story of how this church was formed, how it has grown, and how it has reached beyond itself in service to others.

As you read, we hope this story feels familiar -- a name of a friend, a memory of participation, a moment of feeling safe, or a reminder of why this place has mattered. You may even find something new worth holding onto.

The story of Como Park Lutheran Church isn't finished. It continues in the same ways it always has, through faith, through generosity, and through people who keep showing up for one another and for the world around them.

“Let all that you do be done in love.” 1 Corinthians 16:14

Guided by Call, Built by Many Hands

A Brief Pastoral History of Como Park Lutheran Church

1926

Pastor Peder Fjere was assigned by the Mission Board of the Norwegian Lutheran Church to work with the Chelsea Heights Neighborhood Women's Auxiliary to organize a congregation in their neighborhood. Chartered with the NLC as Chelsea Heights Lutheran Church, the congregation incorporated soon after under the name Como Park Lutheran Church.

1927

Pastor Carl Rasmussen, a former missionary to Madagascar, was called as its first pastor. During its first year, the congregation met in a satellite building at Chelsea Elementary School while it built a small white frame building on Sheldon Avenue nearby. Early growth came quickly, and in 1929 a congregation of 142 souls and 90 communicants approved and undertook the building of a new brick sanctuary designed to seat 300 worshippers. One year later, a congregation of 230 souls and 133 communicant members dedicated this space for worship and mission. The early growth of membership was rapid, with almost a hundred members a year joining throughout the first decade of this young church's existence.

1943

Pastor Otto Schmidt was called as Senior Pastor. During his tenure, the Norwegian Lutheran Church became the Evangelical Lutheran Church in 1946, marking a significant denominational shift. The church continued to grow, and by 1948 the education wing and fellowship hall had been added to the building. Mission engagement deepened as the Women's Auxiliary began supporting Jacob (Jake) and Evie Jacobsen as missionaries in Madagascar in 1961; Pastor Jake would later serve as a visitation pastor at CPLC. In the final year of Pastor Schmidt's ministry, the ELC became part of the merger into the American Lutheran Church.

1961

Pastor John Groettum was called as Senior Pastor. His tenure included a 40th anniversary gift to Luther Seminary that established its Foreign Students Scholarship Fund. In 1966, the congregation funded a mission start-up in San Marcos, California that is still a vital congregation. The office wing of the building was also added during Pastor Groettum's ministry in 1968.

1984

Pastor Paul Roe began his ministry as Senior Pastor at Como Park Lutheran Church. In 1987, the ALC merged with the AELC and LCA to become the ELCA, Como Park's fourth and current denominational identity. The old organ was replaced with the current Casavant pipe organ in 1989, and accessibility needs were addressed with the narthex building addition in 1993. Pastor Roe was also instrumental in establishing the CPLC Trust Fund, transitioning the congregation from boards to the current council model, and aligning the congregation with the governance structures of the ELCA.

1994

Pastor Paul Harris served as Senior Pastor, and during his ministry the congregation's global mission partnerships shifted from ELCA Global Missions support in Madagascar to a new partner congregation in Itungi, Tanzania.

2000

Pastor Martin Ericson was called as Senior Pastor and continues to serve. These years have been a time of change as the congregation shifted back from multiple staff to a single-pastor model of ministry. During this tenure, the Guatemala ministry was begun, hunger ministries were strengthened and expanded, and connections with local partners were deepened.

Throughout these periods of ministry, many have played important roles in the



congregation's continued vitality and mission, including music directors, youth directors, visitation pastors, associate and intern pastors, church secretaries, financial officers, and those serving in hunger, hospitality, and outreach ministries. The strength of this congregation, however, has always come from its members. It is the decades of lay ministry and the committed service of members that continue to provide this congregation with its innovation, resilience, and strength.



Rooted in Generosity, Reaching Beyond

A Brief History of Mission Outreach and Fundraising at CPLC

Early Foundations of Mission

With written records that go back seventy years to 1956 as evidence, activities supporting mission work were already going strong at Como Park Lutheran. Various groups led these early efforts, beginning with one mission meeting a year open to the public, featuring a guest speaker and a free-will offering. The Plymouth Youth Center, along with missionaries to Japan and Madagascar since 1955, were supported, with Rev. Leonard and Evalyn Jacobsen calling Como Park their second church home. In those days, leadership came from the Women's Missionary Federation – ELC, and funds raised for missions were around \$2,000.

Growing Leadership and Expanding Outreach

Through the following decades, fundraising leadership broadened to include CPLC Women, ALCW, a Social Action Committee, and Deacons. Funds raised for missions averaged between \$3,000 and \$7,000, with a brief surge into the \$13,000 range during several years in the late sixties. Support of food ministries

began in 1970 with programs like FISH, which provided help with transportation and meals. Member leaders such as Elsie Trapp, Mary Tollefson, and Roy Muscatello were instrumental in coordinating outreach efforts in these earlier years. Meals on Wheels is mentioned for the first time in 1974. Organizations such as the Well Baby Clinic, the Shoreview Treatment Center for Alcoholism, Grocery on Wheels, the Selby food shelf, and quilt-making ministries expanded Como Park's community outreach even further.

Deepening Commitments and Broader Partnerships

In the eighties, financial support for outreach increased steadily and diversified. Partnerships grew to include the local Southeast Asian Ministry, the Green Tape emergency food program, women's programs, handicapped programs, Lutheran Social Services, and Tanzania—first mentioned in 1983. As these efforts expanded, more formal structures emerged to guide the work, including Social Action/Concerns/Missions/Ministries committees, ALCW/CPLCW/Bazaar groups, and Refugee Response teams.

A Defining Tradition of Giving

The first Mission Auction was held in 1996 to support work in Madagascar, raising \$2,000. Since its inception, the event has raised over \$280,000 in nearly three decades (including \$273,600 in 29 years), generating an average of \$9,400 annually. These funds have supported a wide range of community, food, and education needs. In 2000, outreach financial support shifted away from the general church budget to center around this annual spring event. The Bazaar Committee, Quilters, and the Trust Fund have continued to provide additional funds and much-needed items to strengthen outreach programs.

A Living Mission Through Service

It is important to note that the people of Como Park are not only generous with their financial support, but also with their time. Many have volunteered to read in



elementary schools, ring Salvation Army bells, cook and deliver meals to homeless shelters, pack children's backpacks with weekend food, participate in crop walks, and serve in countless other ways.

A Lasting Legacy

To illustrate the magnitude of its reach, Como Park Lutheran has supported more than 60 organizations across a diverse range of local and global needs, responding to changing economic and political landscapes. The congregation is regarded as a leader in outreach. This legacy is not only something to be proud of, but a meaningful expression of how God's love and faith have worked within its members to serve others.

While Como Park Lutheran may continue to adapt its approaches to outreach, one thing remains clear: outreach is the cornerstone of its mission to share Christ's presence in the community and beyond.

Incomplete List Of Outreach Organizations And Activities

Global Missions & Partnerships

ELCA
ELCA World Hunger Appeal
Lutheran World Relief
Madagascar Missions
Itungi Parish Companion Church, Tanzania
Iringa Diocese (Tanzania)
Companion International Heifer Project
Guatemala
Iglesia Luterana Agustina de Guatemala
Cristo Luz del Mundo, Santa Amelia,
Guatemala

Education & Youth Engagement

Luther Seminary
Seminary Internship Funding
LEAF Scholarships (Lutheran Education Aid Fund)
Plymouth Christian Youth Center
Boy Scouts
Girl Scouts
Youth Mission Trip
Reading at School (Chelsea Heights)
Chelsea Heights Elementary
Falcon Heights Elementary
Roseville Area High School
Como Park High School

List Continued

Local Service & Community Support

Christ Lutheran Church New Immigrant Outreach
Lutheran Social Services
Union Gospel Mission
Our Savior's Shelter
Keystone Community Services
Family Place
Chinese Hospitality Center
Living at Home Block Nurse Program
Lyngblomsten Care Center
SPARK Newsletter

Food & Hunger Ministries

Every Meal
Meals on Wheels
Shobi's Table
Como Grow A Row
Green Tape/New Beginnings Center
Mitten Tree

Seasonal & Special Outreach Efforts

Salvation Army Bell Ringing
Crop Walk
Habitat for Humanity
Quilts

Health & Basic Needs Services

Bloodmobile
Eye Glass Donation
Bus Transportation

Church & Community Life Activities

Caroling
Outdoor Services
Advent Dinner
Wednesday Meals
Meat Loaf Dinner
Bazaar
Mission Auction
Rummage Sale
Neighborhood Raking (Youth)
Door to Door Evangelism
Lutheran Vespers

Denominational & Regional Connections

St. Paul Area Council of Churches
St. Paul Area Synod
South Central Conference

Fundraising & Giving Initiatives

Mission Auction
Bazaar
Rummage Sale
Trust Fund Remembrance Tree
Used Stamp Collection

Camps & Retreats

Lake Wapogasset Church Camp

✠ ✠ ✠



COMO PARK LUTHERAN



Reaching out in Christ to a changing world.

COMO PARK FARMERS' MARKET



May 14 – Oct. 29

No market Aug. 27, Sept. 3

Thurs: 2 PM – 6 PM

1545 Hamline Ave, St. Paul



GROWING FOR GOOD

Saturday, May 2nd • 12:00 – 2:00 PM
1376 Hoyt Ave W, St. Paul

Catch the cultivators' buzz. Grow abundantly. Share generously.
Thrive, together.

WHAT'S HAPPENING

Kids' Activities
Fun for all ages
– get your hands
dirty!

**CPLC
Giving Garden Tour**
See the giving
garden up close

**Ask a Ramsay
Garden Educator**
Get expert tips from
local growers

WHO'S JOINING US

MN Tool Library

St. Paul Parks & Rec

Como Community Seed Library

District 10 Como Community Council

MN Hobby Beekeepers

Meet local beekeepers and learn about
pollinators

Como Grow a Row

Growing food to share with
neighbors in need

St. Paul Growers Association



SCAN HERE FOR MORE INFO



Free & open to all • comoparklutheran.org • Supported by Thrivent

APRIL 26, 2026
FOURTH SUNDAY
OF EASTER



Followers of Jesus shepherd one another.

DAILY BIBLE READINGS

These passages are related to the Lectionary texts for this Sunday.

Sunday	John 10:1-10	Christ the shepherd
Monday	Acts 2:42-47	Life among believers
Tuesday	1 Peter 2:19-25	Example of Christ's suffering
Wednesday	1 Peter 5:1-11	Tending the flock of God
Thursday	Ezekiel 34:11-31	God, the true shepherd
Friday	Romans 12:14-18	Marks of the true Christian
Saturday	Psalms 23	The Lord is my Shepherd
Sunday	John 14:1-14	Jesus is the way, truth, and life

SCRIPTURE VERSE FOR THIS WEEK

All who believed were together and had all things in common; they would sell their possessions and goods and distribute the proceeds to all, as any had need. Acts 2:44-45 (NRSV)

PRAYERS AND BLESSING

A Prayer for the Week:

Almighty and merciful God, keep us close to your care, and in our times of suffering may we trust in you and be cared for by others through Jesus Christ, the Good Shepherd. Amen.

Mealtime Prayer:

Dear Jesus, thank you for preparing a table for us that we may be strengthened for our journey as we follow you, the Good Shepherd. Amen.

A Blessing to Give:

May the Good Shepherd guard you always. (1 Peter 2:25)



© 2025 Milestones Ministry, LLC. All rights reserved.

APRIL 26, 2026

HYMN OF THE WEEK

Savior, like a Shepherd

Lead Us

WEEKLY MILESTONES

Take a moment to tell or think about a recent mountain high and/or valley low in your life.

CARING CONVERSATIONS

Discuss in your home, small group, or use for personal reflections:

- What does a shepherd do to care for the sheep?
- Jesus says his sheep listen to his voice and follow him (John 10:3-4). When and where do you hear Jesus' voice?

DEVOTIONS

Read: Acts 2:42-47.

Every year the Fourth Sunday of Easter is the "Good Shepherd Sunday." Psalm 23 reminds us that the Lord is our shepherd. 1 Peter 2:25 states that Jesus is "the shepherd and guardian of your souls." John 10:4 speaks of the sheep who follow because they know the voice of the shepherd. Acts 2 gives a picture of what the community of the Good Shepherd looks like. It is a people who shepherd one another by sharing their possessions. Together they study the word of God, have fellowship, break bread and pray. Christian shepherds do these things. Daily they worship publicly but also break bread in homes with "glad and generous hearts, praising God and having the goodwill of all the people" (vv. 46b-47a). The result is a community that by its very way of life and by the power of God adds "to their number those who [are] being saved" (v. 47b). A community of people caring for one another witnesses to God's love. The outcome is more souls in the sheepfold.

Discuss: How is your home a place to shepherd souls?

Pray: **Good Shepherd, thank you for calling out to us through a community that cares for one another publicly and also in our daily lives. Amen.**

SERVICE

Jesus calls us to serve our neighbor in love. Based on the Daily Bible Readings and theme for this week, how can you provide food, clothing, or shelter to someone in need?

RITUALS AND TRADITIONS

Draw or find a picture of a sheep. Imagine you are the shepherd for this sheep. Make a list of things you would do to take care of the sheep. Psalm 23 begins with the words, "The Lord is my shepherd." Read Psalm 23 and compare your list with the ways the Lord cares for sheep. How are the lists the same? How are they different? Then take a moment to breathe in and say: **The Lord is my shepherd.** Breathe out and say: **I shall not want.**



In addition to *Taking Faith Home*, celebrate milestones in your daily life as an effective faith formation tool. Go to: www.milestonesministry.org



**Please visit the Welcome Desk in the narthex
if you have any questions about our facility or upcoming events.**

**Adult Forums, Membership Classes,
Visitations, & General Ministries**

Pastor Martin Ericson - 651-646-7127 Ext. 2202
ericson@comoparklutheran.org

Youth Director

David Osterhouse - 651-646-7127 Ext. 2204
osterhouse@comoparklutheran.org

Director of Music Ministries

Tom Ferry - 651-646-7127 Ext. 2209
ferry@comoparklutheran.org

Sunday School Superintendent

Kelly Whitstone - 651-646-7127
sundayschool@comoparklutheran.org

Nursery

Jessica Vargas—651-646-7127 Ext. 2219

**Senior Ministry & Volunteers Engagement
Coordinator**

Jonathan Nye - 612-839-2527 (c)
jonathan@comoparklutheran.org

Social Ministries

Sue Brogger - 651-646-7127 Ext 2203
sue@comoparklutheran.org
Ruth Pechauer - 651-641-1654 (c)
ruthpechauer@gmail.com

Prayer Chain

Mary Ann Schmidt - 720-357-3558 (c)
schmidt.m795@gmail.com
prayerrequest@comoparklutheran.org

**Hunger Ministries, Kitchen & Events
Coordinator**

Sue Brogger - 651-646-7127 Ext 2203
sue@comoparklutheran.org

**Finance Comptroller & Trust Fund
Donations**

David Laden - 651-646-7127 Ext 2211
laden@comoparklutheran.org

Como Connects

Lisa Kane - 651-642-1127
director@comobnp.org
Heidi Schultz - 651-642-1127
office@comobnp.org

Living At Home, Inc.

Kristin Rigg—651-649-0315
kristin@lahnetwork.org

**Senior Services Consortium of Ramsey
County (Meals on Wheels Ramsey County)**

Denise Wickiser—651-343-6875 (c)
denise@mealsonwheels-rc.org

Sunday Custodian

Ted Chresand—651-646-7127

Custodian & Groundskeeper

Marcus Pierce - 651-646-7127
custodian@comoparklutheran.org

CHURCH OFFICE:

Angela Lennes—651-646-7127 Ext 2200
office@comoparklutheran.org