

AIA Orange County

Imagine the city of Irvine has developed the ideal micro-home community—a multi-family village filled with architectural gems ranging from 350 to 800 square feet. Picture traditional cottages standing beside bold contemporary boxes, repurposed shipping containers, and other imaginative interpretations of style. You get to stroll through this eclectic neighborhood and discover the perfect starter home just for you. **What does it look like?**

Forget the site constraints for now and focus solely on the design of your chosen home. Keep construction feasibility and affordability in mind—skip the far-fetched ideas like a 20-foot concrete cantilever, but consider practical options such as prefabricated components or simple wood framing.

Now, bring your dream home to life. Aim for a design that's creative yet realistic. This micro-home should be small, comfortable, and within an attainable budget. Think of it as the seed of your California homeownership journey—a launchpad to one day upgrade to a larger space.

2025
AIAOC
Housing
Charette #2





01 - Document Format

Board Size: 11" x 17" (Tabloid) Landscape & Portrait allowed

Board Limit: 1 board per submission

Drawing Limit: Maximum of 2 drawings per board

Team Size: Up to 2 team members per submission

02 - Entry Fee \$15

The **1st submission** requires a **\$15 entry fee** which will include a **free ticket to the October Mixer**. Each **additional submission** will cost **\$5**. A registration link will be provided here: <https://forms.pabbly.com/form/share/v8Wx-722611286>

03 - Categories

Professional Submissions: Open to industry professionals to showcase their unit design ideas. Submissions may be presented using any medium, including digital, hybrid (combining hand and digital tools), or traditional hand-drawn techniques.

Student Submissions: Open to college students to showcase their innovative unit design ideas. Submissions may be presented using any medium, including digital, hybrid (combining hand and digital tools), or traditional hand-drawn techniques.

04 - Potential Drawings to Include

Participants have the freedom to determine how they best represent their prototype unit. Possible elements may include:

- **Unit Plan:** Floor plan illustrating spatial arrangement and dimensions
- **3D Views or perspectives:** Rendered or sketched views to enhance
- **Sustainability Features:** Energy efficiency, ventilation, and natural lighting strategies
- **Flexibility & Adaptability:** Demonstrating modular or alternative configurations
- **Other Unique features:** Any additional elements that showcase the design vision

05 - Submission Deadline: Sept 22

Participants must submit a single 11" x 17" PDF (one sheet) as their entry, by 2025-09-22 @ 11:59 pm. Use the registration link to upload your submission.

Please include the names of all team members or firm name with your submission.

06 Voting & Recognition

October 16th at the Fall Mixer, attendees will vote on submissions in each category to determine the winners. Located at AIA Orange County.

Example Board 1: Rendering + Unit Plan

Home Design Associates

DESIGN #C-48

30'-0"

20'-0"

SKYLIGHT

DINING - KITCHEN 7'-0" x 11'-0"

BATH

CLOSET

LINEIN

BED RM. 9'-6" x 8'-9"

BED RM. 9'-6" x 8'-9"

TERRACE

TERRACE

LIVING RM. 12'-0" x 15'-3"

HETTER

STOR.

WALKED HEARTH

CLOSET

If this Vacation Retreat hits you like a flash it's because it's so basically simple and to the point. Your eye doesn't have to wander all over the lot to visualize just how solidly this model fits into place, especially on a flat, wide site.

The two masonry walls which run completely through

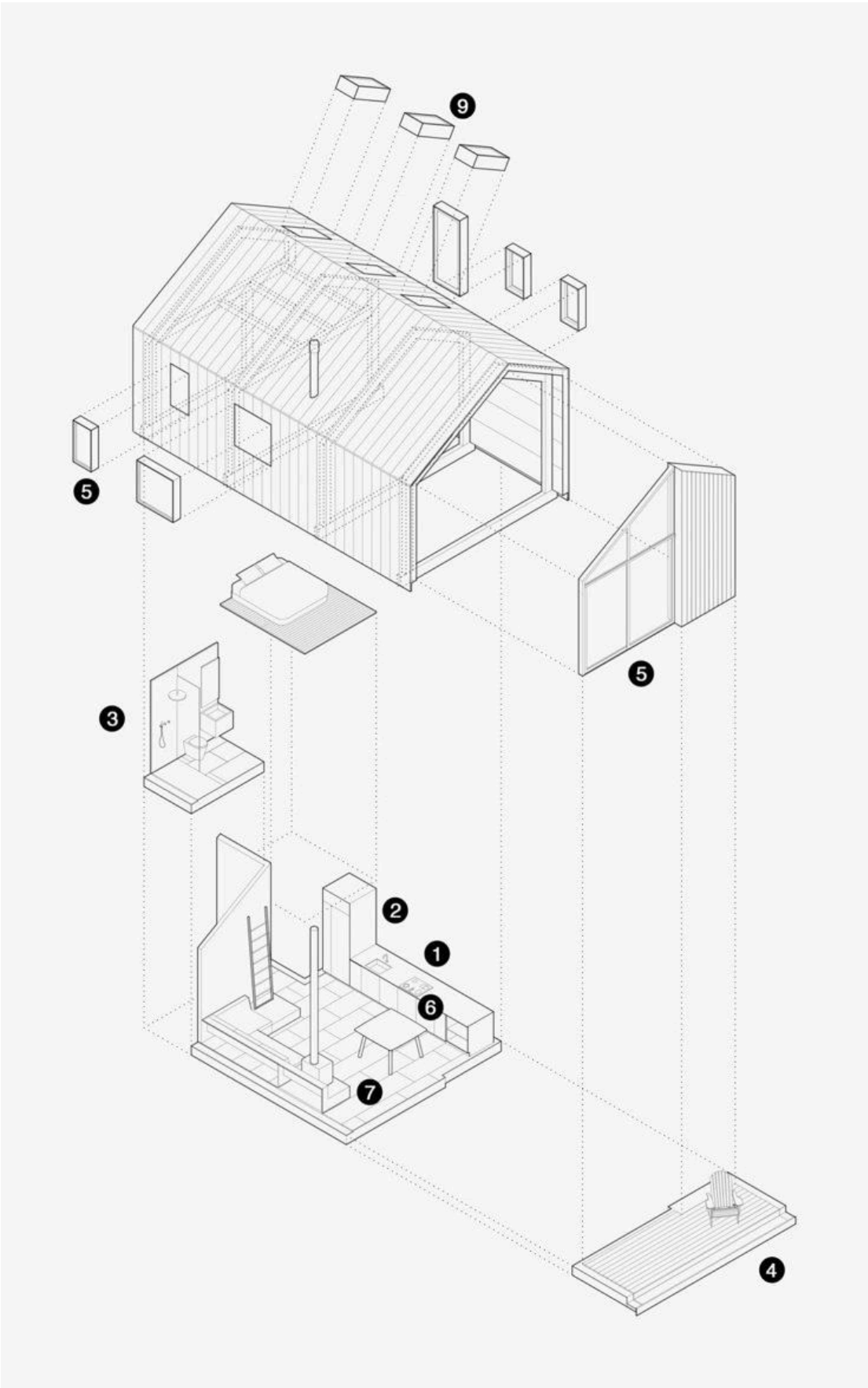
the structure attest to its durability. There's no monotony here. The checkerboard effect in the walls and terrace endow the home with a delightful diversity. Doors on both sides insure portal-to-portal ventilation.

Crowning touch—two tiny skylights for kitchen and bathroom.

prize SMALL HOMES

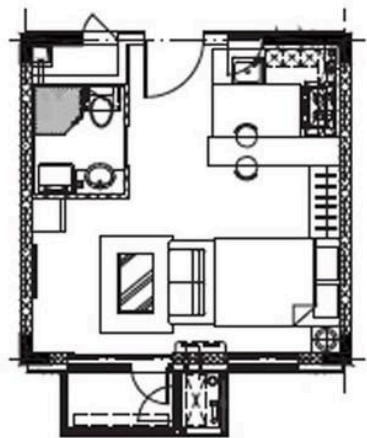
page 46

Example Board 2: Exploded Axon



Example Board 3 : Axon + Unit Plan

A1 Type Axonometric Floor Plan



Refrigerator

Bathroom Units

Single Corridor

Kitchen Units

Closet

Sofa, TV, Coffee table

Standard Double Bedroom

Standardized Balcony

