

# Native Plants for Riparian Revegetation Lower Blackwood Catchment

Steps to Successfully Revegetate Your Creekline  
Lower Blackwood Workshop, 20<sup>th</sup> April 2023



**Lower Blackwood Catchment**  
Land Conservation District Committee



natural resource  
management program

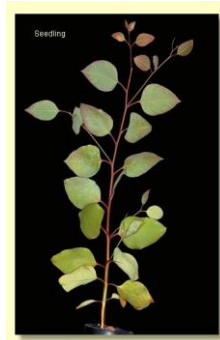
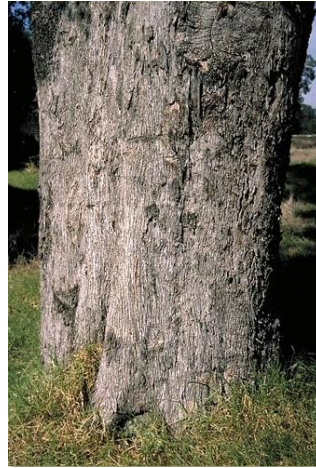


# Eucalypt Trees

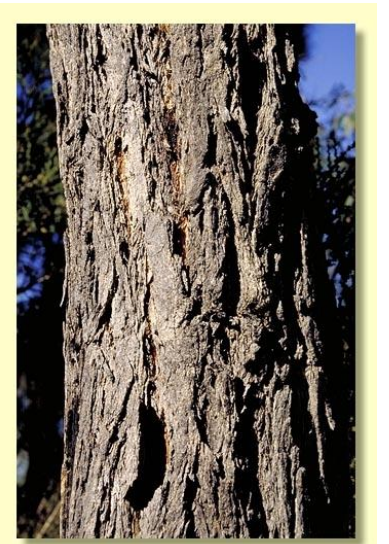


Lower Blackwood Catchment  
Land Conservation District Committee

## Flooded Gum (*Eucalyptus rudis*)



## Blackbutt (*Eucalyptus patens*)

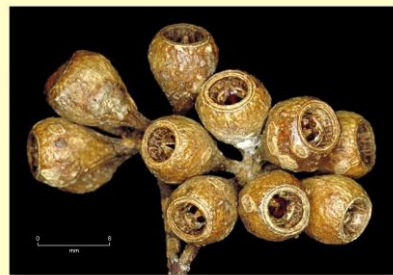
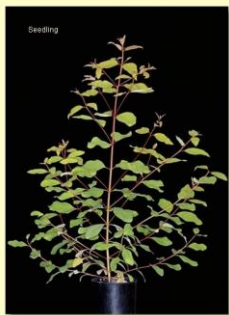


# Eucalypt Trees



Lower Blackwood Catchment  
Land Conservation District Committee

## Karri (*Eucalyptus diversicolor*)



## Marri (*Corymbia calophylla*)



# Melaleuca Trees



Lower Blackwood Catchment  
Land Conservation District Committee

## Swamp Paperbark (*Melaleuca raphiophylla*)



## Modong (*Melaleuca preissiana*)



# Melaleuca Shrubs



Lower Blackwood Catchment  
Land Conservation District Committee

**Robin Red-breast**  
(*Melaleuca lateritia*)



**Grey Honey Myrtle**  
(*Melaleuca incana*)



# Teatree Shrubs



Lower Blackwood Catchment  
Land Conservation District Committee

## Swamp Peppermint (*Taxandria linearifolia*)



## Fine Teatree (*Taxandria parviceps*)



# Wetland Shrubs



Lower Blackwood Catchment  
Land Conservation District Committee

## Swamp Blood-flower (*Calothamnus lateralis*)



## Swamp Bottlebrush (*Beaufortia sparsa*)



# Wetland Rushes



Lower Blackwood Catchment  
Land Conservation District Committee

## Velvet Rush

(*Leptocarpus scariosus*)



## Jointed Twig-rush

(*Baumea articulata*)



