

Grand Teton National Park

Winter Wildlife Closures

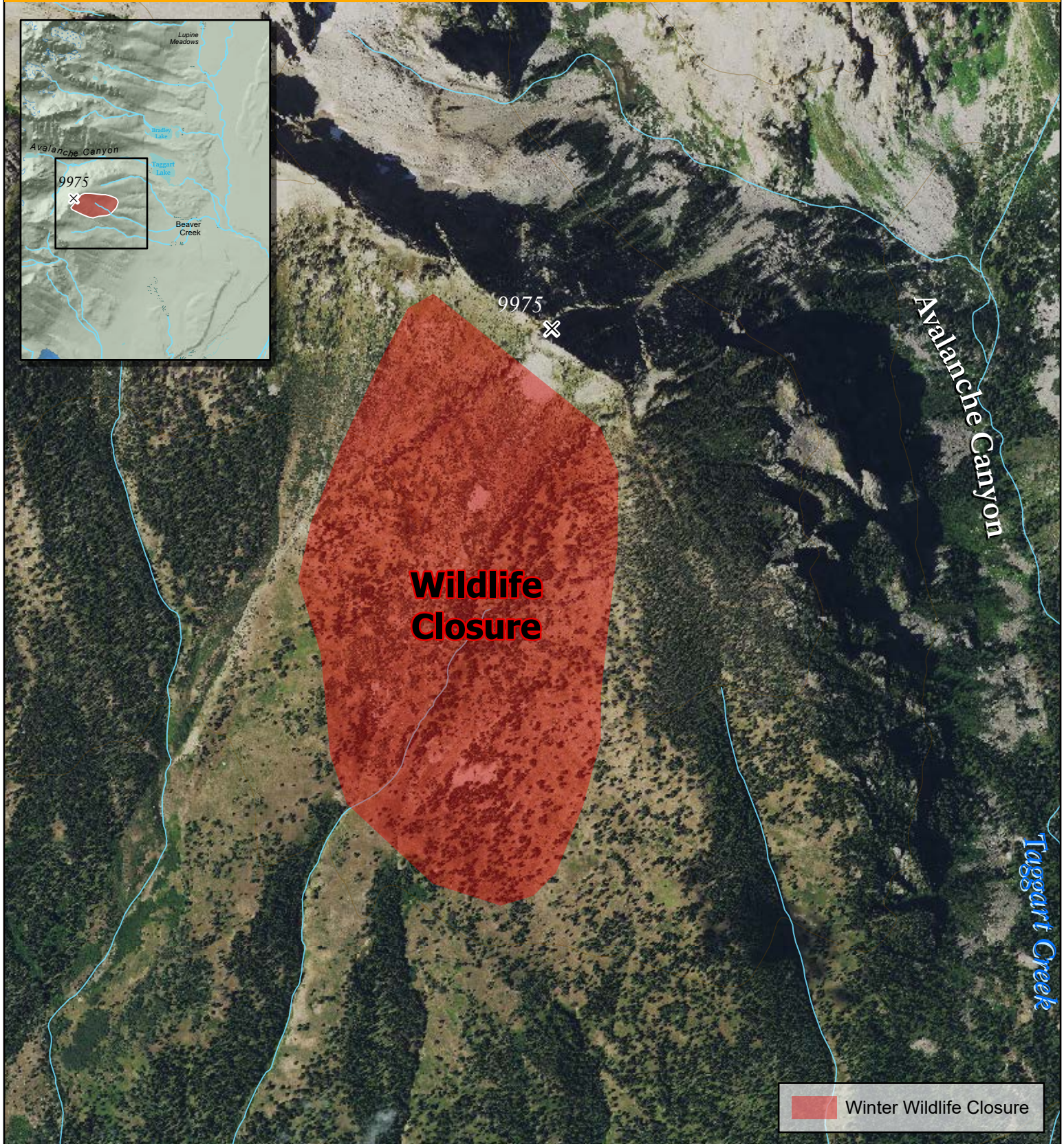
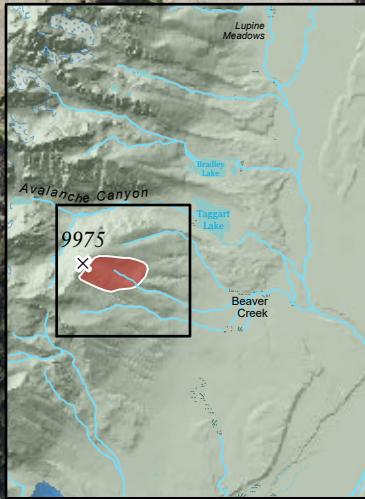
Closure in effect March 19 - Until Further Notice

National Park Service

U.S. Department of the Interior



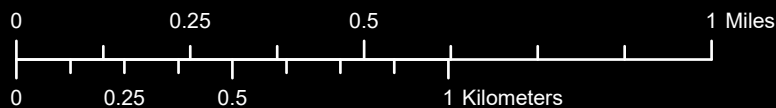
The east facing slope below the "skier summit" and the true summit of "25 Short" (peak 9975) is CLOSED. Direct access across summit ridgeline to Turkey Chute, Chute the Moon, and other routes into Avalanche Canyon are open. The area is closed to prevent a potential conflict between a denning grizzly bear and skiers in the "25 Short" area.



**Wildlife
Closure**



Winter Wildlife Closure



GRTE Geographic Resources Division
March 2021
Data Sources: NPS Park Data