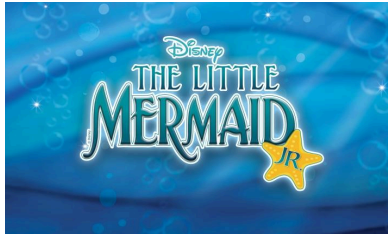


Summer Rehearsal Schedule

Last Update: May 21, 2026

Schedule is subject to change- updates noted in bold

REHEARSALS			
DATE	REHEARSAL	TIME	Location
Thursday, 5/21	Leads Only	4:45-6:45pm- Sebastian, Triton, Ariel, Flounder, Scuttle 4:45-5:45pm- All Mersisters	NPAC at YMCA
Tuesday, 5/26	Leads Only	4:45-6:45pm Prince Eric, Ariel, Flotsam, Jetsam, Doom, Gloom, Ursula, Sebastian, Scuttle 4:45-5:45- Grimsby	NPAC at YMCA
Thursday, 5/28	Leads Only	4:45-6:45pm Prince Eric, Grimsby, Triton, Sebastian, Ariel, All Mersisters, Flounder, Scuttle, Ursula, Flotsam, Jetsam, Doom, Gloom 4:45-5:45- Carlotta	NPAC at YMCA
Monday, 6/8	Full Cast	9:30am-3:30pm	Dance Room in Field House at CSN
Tuesday, 6/9	Full Cast	9:30am-3:30pm	Dance Room in Field House at CSN
Wednesday, 6/10	Full Cast	9:30am-3:30pm	Dance Room in Field House at CSN
Thursday, 6/11	Full Cast	9:30am-3:30pm	Dance Room in Field House at CSN
Friday, 6/12	Full Cast	9:30am-3:30pm	Dance Room in Field House at CSN
Monday, 6/15	Full Cast	9:30am-3:30pm	Dance Room in Field House at CSN



Tuesday, 6/16	Full Cast	9:30am-3:30pm	Dance Room in Field House at CSN
Wednesday, 6/17	Full Cast	9:30am-3:30pm	Dance Room in Field House at CSN
Thursday, 6/18	Full Cast	9:30am-3:30pm	Dance Room in Field House at CSN

TECH & PERFORMANCE SCHEDULE

DATE	REHEARSAL	TIME	LOCATION
Monday, 6/22	Tech Rehearsal	4:30-7:30	MAC at CSN
Tuesday, 6/23	Dress Rehearsal	4:30-7:30	MAC at CSN
Wednesday, 6/24	Dress Rehearsal	4:30-7:30	MAC at CSN
Thursday, 6/25	Dress Rehearsal	4:30-7:30	MAC at CSN
Friday, 6/26	Opening Night Seashell Cast	4:30-8:30	MAC at CSN
Saturday, 6/27	Matinee Starfish Cast	12:30-3:15	MAC at CSN

ALL STUDENTS MUST BE PICKED UP AT 3:15PM AND RETURN AT 6PM ON SATURDAY. NO STUDENTS CAN STAY IN BETWEEN SHOWS AS OUR STAFF WILL BE ON BREAK.

Saturday, 6/27	Performance Seashell Cast	6:00-8:45	MAC at CSN
Sunday, 6/28	Closing Performance Starfish Cast	2:30-5:15	MAC at CSN
Sunday, 6/28	Cast Party	5:15-6:30pm	MAC Courtyard @ CSN (Lunchroom if raining)

NOTES

-Students can only be dropped off 15 minutes prior to rehearsal starting and must be picked up no later than 15 minutes after rehearsal ends.

-Schedule is subject to change

-Immediately after the closing performance, we will begin to tear down. We ask that families stay and help put away chairs, take down curtains, sort costumes, etc and while that is happening, there will be a cast party in the courtyard for the kids.