

# VOLUSIA FLAGLER 2050

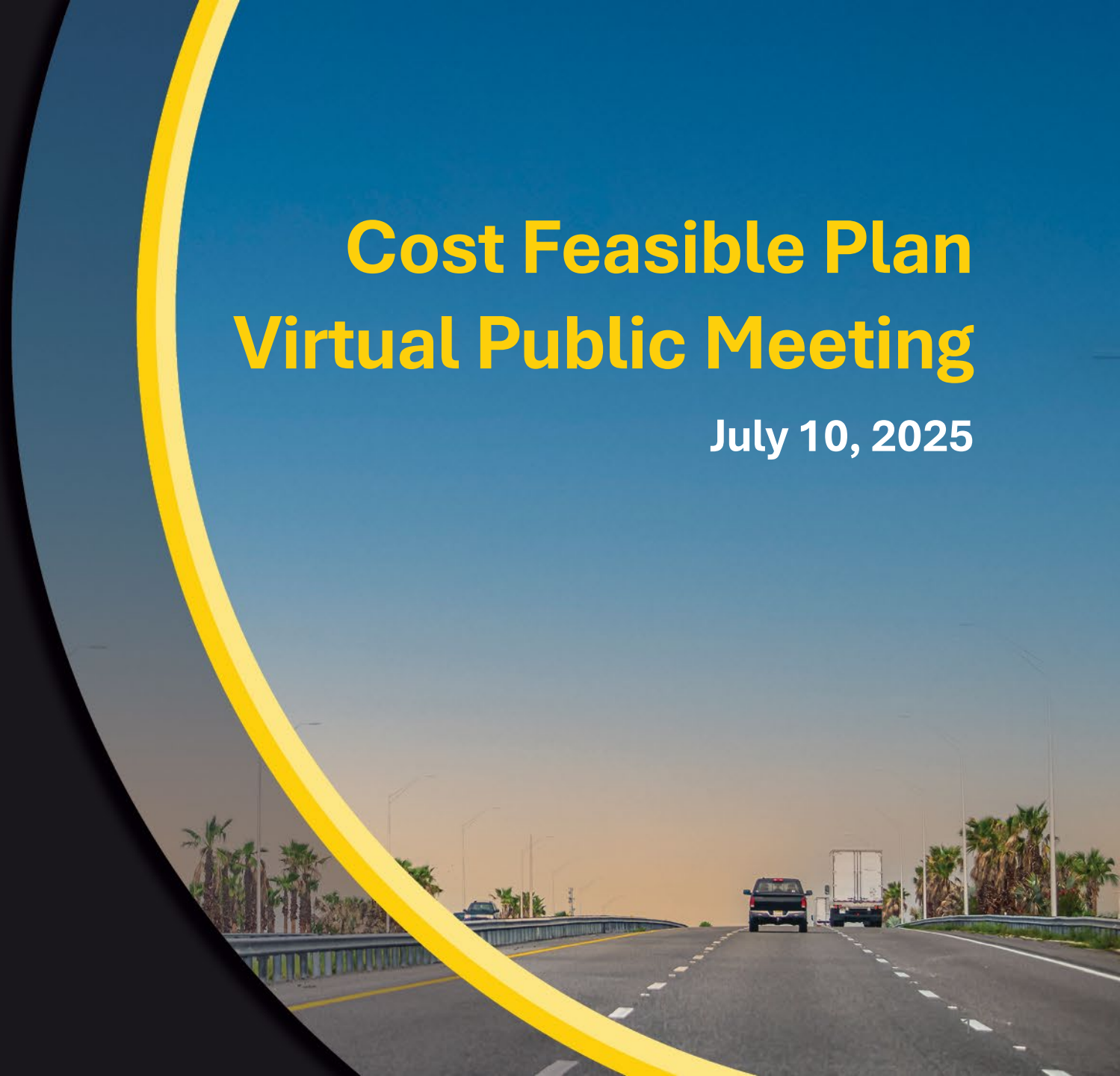
Long Range Transportation Plan



TRANSPORTATION PLANNING ORGANIZATION

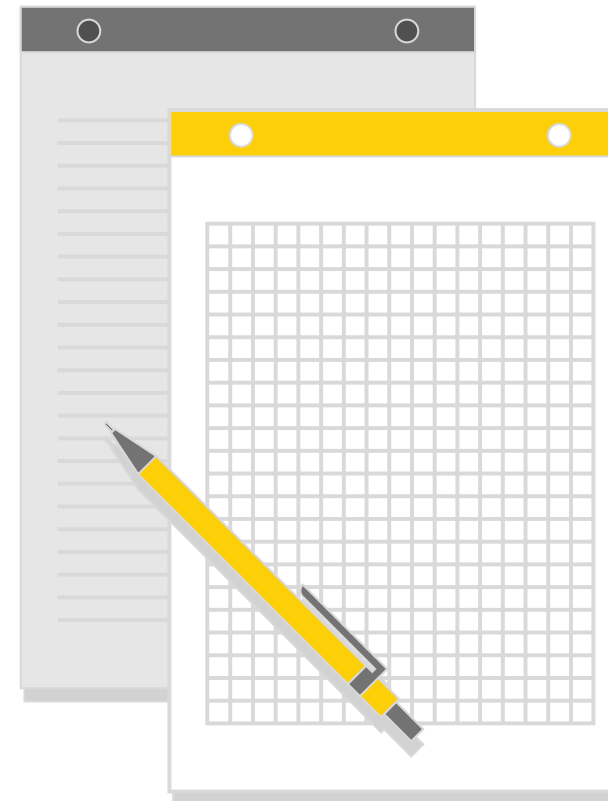
## Cost Feasible Plan Virtual Public Meeting

July 10, 2025



# Today's Agenda

- I. Welcome
- II. 2050 LRTP Progress Update and Recap
- III. Draft Cost Feasible Plan
- IV. Questions and Comments
- V. LRTP Next Steps and Upcoming Activities
- VI. Closing



# Welcome and Introductions



**Colleen Nicoulin**  
**VFTPO Executive Director**



**Jim Wood, AICP**  
**Kimley-Horn**

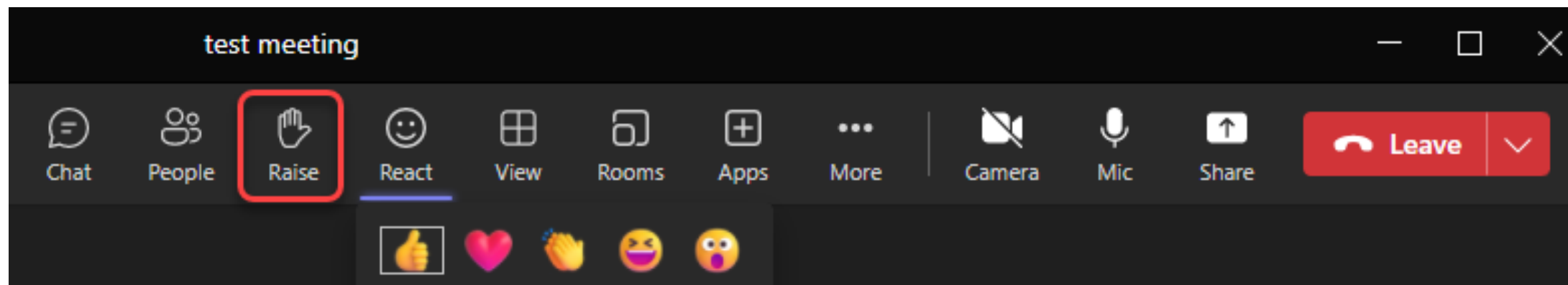


**Mike Vaudo, AICP**  
**Kimley-Horn**

# How to Provide Feedback

## During this Meeting:

- Use Raise Hand function or Chat

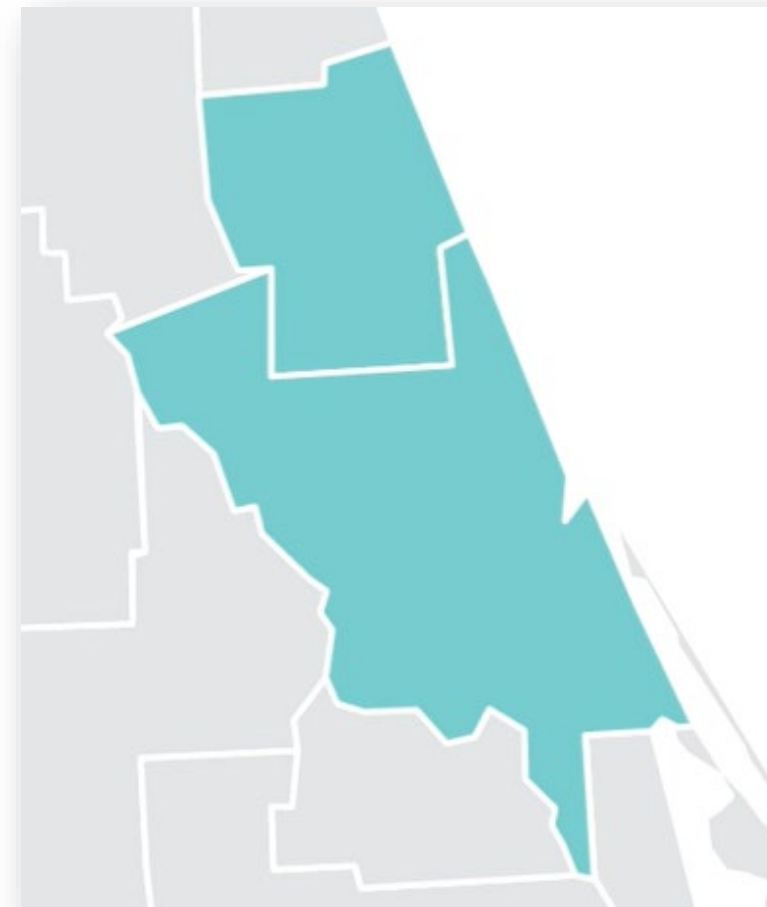


## After the Meeting – (Until August 1)

- Email comments to: [staff@r2ctpo.org](mailto:staff@r2ctpo.org)
- Submit comments on the TPO website or the public input map

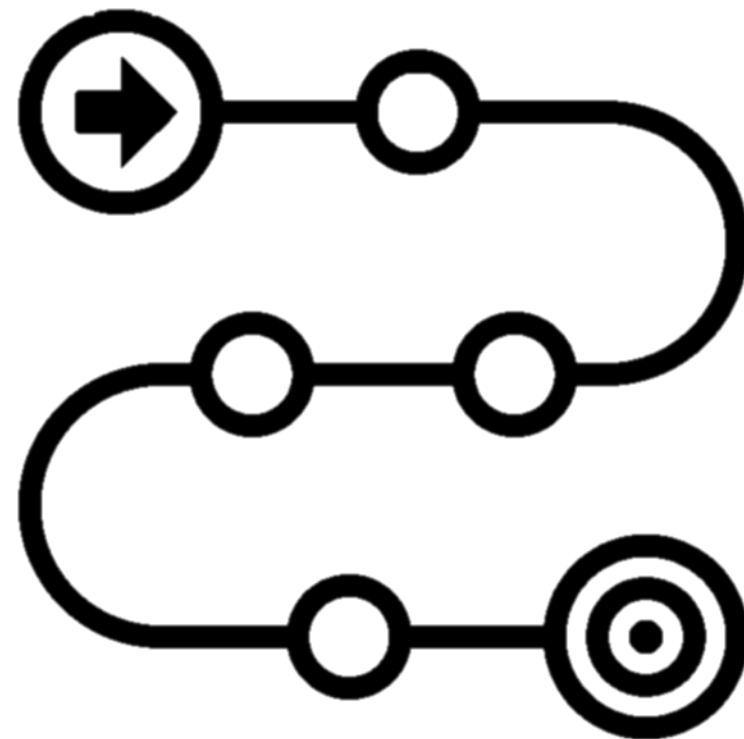
# About the Volusia-Flagler TPO

- Federally designated agency responsible for planning and programming transportation funds
- Planning area includes all of Volusia and Flagler Counties
- Primary activities include:
  - Long Range Transportation Plan
  - List of Priority Projects
  - Transportation Improvement Program
  - Unified Planning Work Program



# What is a Long Range Transportation Plan?

- **Federally-required** short- and long-term plan addressing multimodal transportation needs within Volusia and Flagler counties
- **Updated every five years** covering at least 20 years into the future
- **Identifies future needs and improvements** for pedestrian, bicycle, transit, highway, and freight mobility
- Results in a **fiscally-constrained list of projects**
- Adoption Date: **September 17, 2025**



# LRTP Process Overview



# Plan Goals



## Multimodal

Develop and maintain a balanced and efficient multimodal transportation system



## Economic Development

Support the economic development and growth of the TPO area and region



## Connectivity

Enhance and expand transportation connectivity and choice for all users



## Safety

Eliminate crash-related fatalities and serious injuries and improve safety and security throughout the transportation network



## Livability

Promote livability through a multimodal transportation system that fosters quality communities and protects natural resources



## Involvement

Promote access, transparency, and opportunities for the public to be involved with their transportation system

# Public Involvement

- A range of strategies including:
  - LRTP webpage, social media, and videos
  - Interactive Public Input Map and Survey
  - Virtual Workshops
  - Needs Assessment Public Open Houses
  - Media and Stakeholder Outreach
  - TPO Board and Committee Coordination





**Map View**

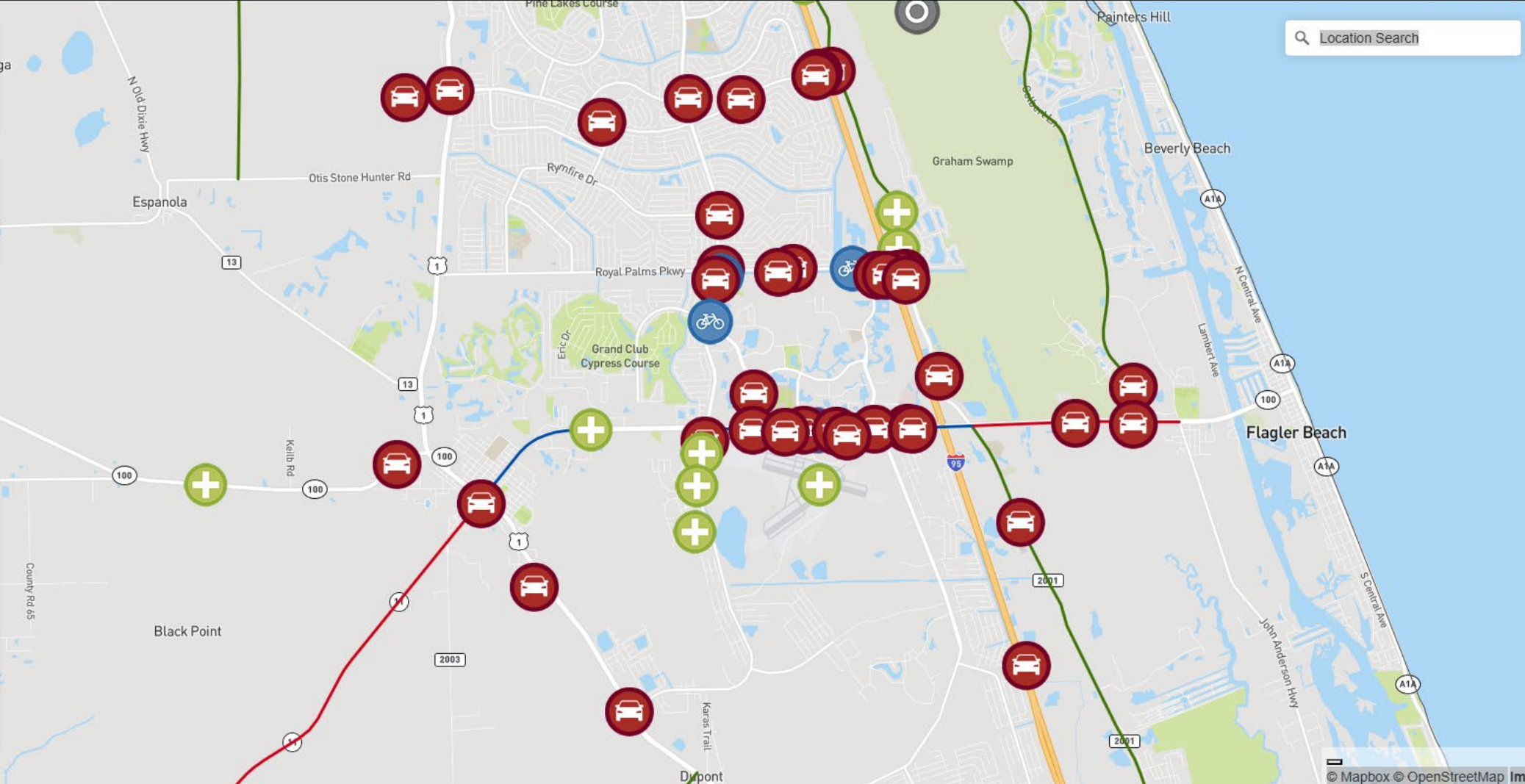
Roadway Needs x

**Basemap Type**

Default

**Legend**

- Intersection / Interchange / Ramp Improvement
- Strategic Intermodal System (SIS) Needs
- State Highway (Non-SIS) Needs
- Non-State (County & City Road) Needs
- VFTPO Boundary



Location Search

Filter Comments

Add Comment

Take Survey

# A Multimodal Plan

Bicycle/Pedestrian



Transit



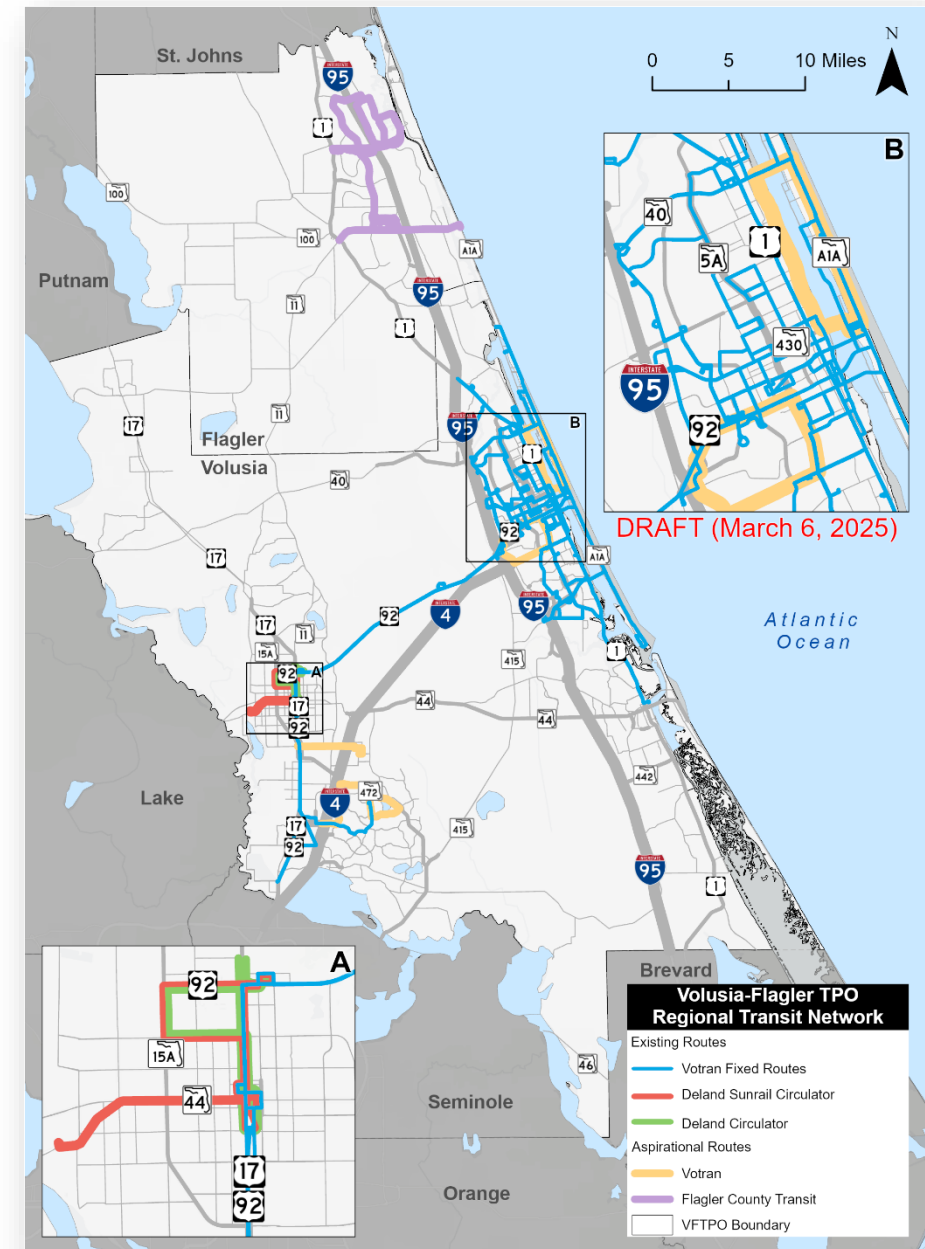
Roadway





# Transit

- **The TPO sets aside 30%** of its annual allocation of Urbanized Area (SU)/TMA Funds for transit capital support
- Transit service needs and improvements identified through Votran and Flagler County Transit Development Plans (TDP)



# Developing the Roadway Cost Feasible Plan

## Identify

Transportation projects necessary to meet future demands without considering financial constraints.

Needs Plan

## Prioritize

Identify the community's highest priorities

## Constrain

the prioritized project list based on anticipated funding availability.

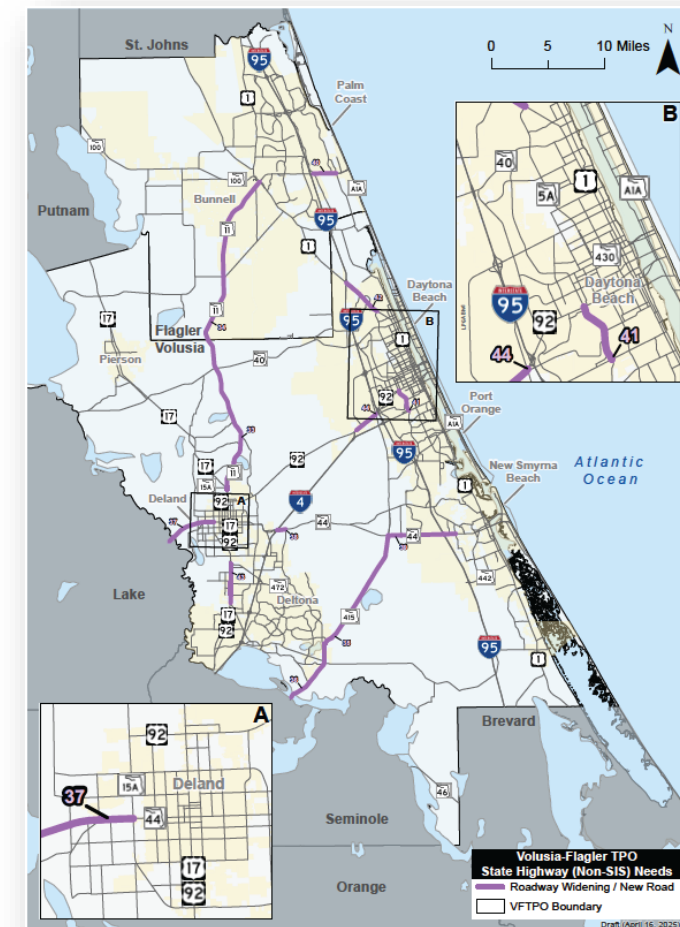
Cost Feasible Plan

# Roadway Needs Assessment

**Initial Set of Projects** for prioritization and potential inclusion in Cost Feasible Plan.

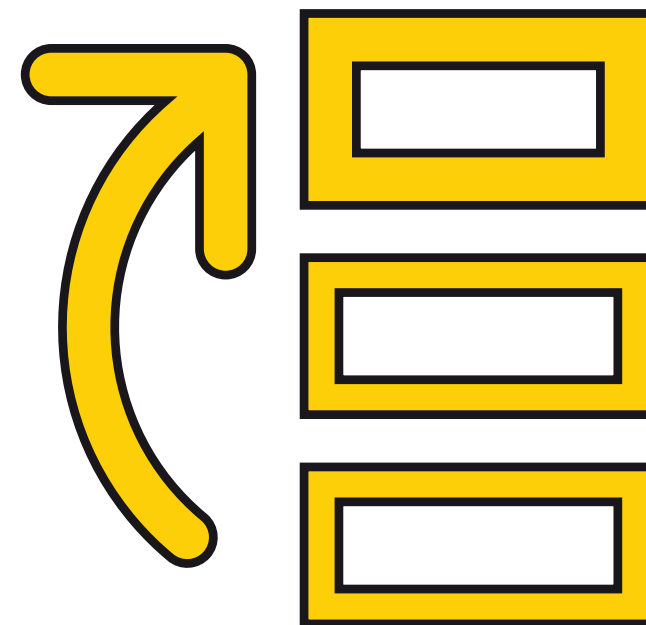
Projects are included in the **Needs Assessment** because they are identified in one or more of the following:

- Existing cost feasible plan (SIS or 2045 LRTP)
- Volusia-Flagler TPO List of Priority Projects
- Illustrative local needs
- Potential need based on future growth forecasts and related, model-driven traffic projections



# Roadway Project Evaluation Criteria

- Measure and evaluate projects to inform prioritization and decision-making
- Translate a variety of project attributes into an overall score and priority ranking
- Categories and criteria guided by the Volusia-Flagler 2050 LRTP Goals and Objectives



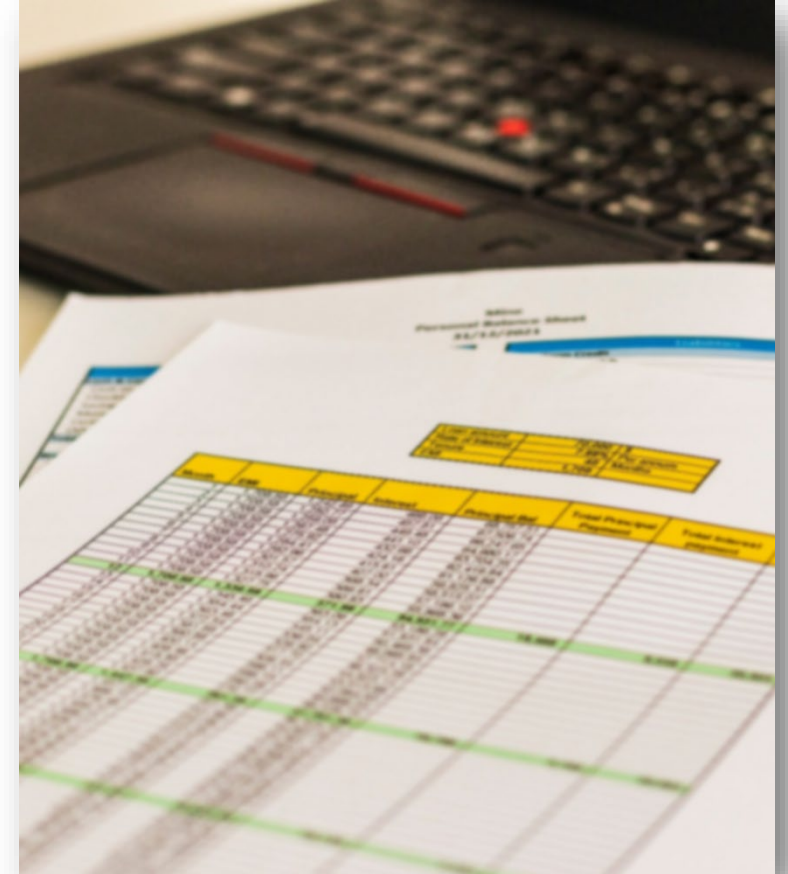
# Criteria Categories

Priority Evaluation Category	Criteria Description
<b>Safety</b>	Fatal and Serious Injury Crashes
<b>Congestion</b>	Volume/Capacity (V/C) Ratios
<b>Project Status</b>	Phases Funded and Priority Status
<b>Emergency Management</b>	Evacuation Routes
<b>Multimodal/ Complete Streets</b>	Bicycle, Pedestrian, Transit and Complete Streets Elements
<b>Economic and Community Development</b>	Access to Activity Centers and Improved Freight Movement

Priority Evaluation Category	Criteria Description
<b>Regional Connectivity</b>	Parallel Reliever Corridors and Consistent Number of Lanes
<b>Disadvantaged Populations</b>	Potential Benefits vs. Potential Impacts
<b>Environment</b>	Corridor Environmental Impacts
<b>Cost Effectiveness</b>	Project Type is Low Relative Cost/High Potential Benefit
<b>Unique Attributes</b>	Project has Attributes Not Recognized Through Other Criteria

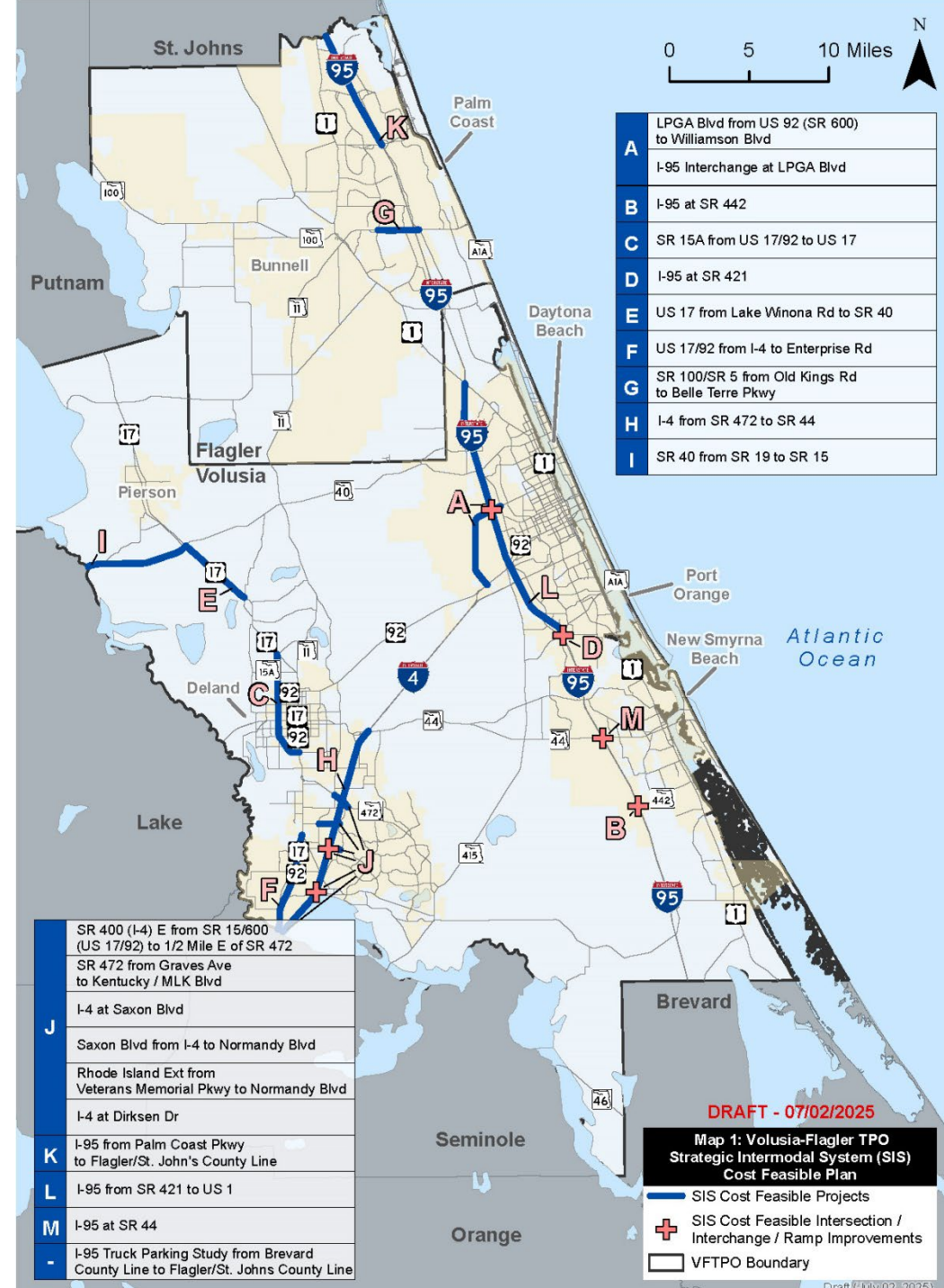
# What is the Cost Feasible Plan?

- **Roadway capacity projects** from the Needs Assessment that can be **realistically funded** through 2050
- Considers:
  - **List of Priority Projects & 2045 LRTP status**
  - **Criteria scores**
  - **Prior project investments**
- Projects not deemed cost feasible documented in LRTP as **Unfunded Needs**



# Strategic Intermodal System (SIS)

- FDOT-designated network of facilities important to the **state's economy and mobility**:
  - I-4, I-95, SR 40, portions of US 17 and SR 100
- SIS projects are **identified at the state level by FDOT** - incorporated by reference in the Volusia-Flagler 2050 LRTP
- Based on **SIS Adopted 2<sup>nd</sup> Five Year Plan (2030-2034)** and **2050 SIS Cost Feasible Plan (2035-2050)**



# Strategic Intermodal System (SIS)

Map ID	Facility	From	To	Description	Phases Funded (2031-2050)
A*	LPGA Boulevard	US 92 (SR 600)	Williamson Boulevard	Widen to 4/6 Lanes	Right-of-Way
	I-95 Interchange	At LPGA Boulevard		Interchange Improvement	Construction
B	I-95	At SR 442 / Indian River Boulevard		Interchange Improvement	PD&E
C	SR 15A	US 17/92	US 17	Widen to 6 Lanes	PD&E
D	I-95	At SR 421		Interchange Improvement	PD&E
E	US 17	Lake Winona Road	SR 40	Widen to 4 Lanes	Construction
F	US 17/92	I-4	Enterprise Road	Widen to 6 Lanes	PD&E
G	SR 100/SR 5	Old Kings Road	Belle Terre Parkway	Widen to 6 Lanes	PD&E; Design; Right-of-Way

\* The widening of LPGA Boulevard from US 92 to Williamson Boulevard includes the interchange project at I-95 and LPGA Boulevard and the replacement and widening of the Tomoka River Bridge.

# Strategic Intermodal System (SIS)

Map ID	Facility	From	To	Description	Phases Funded (2031-2050)
H	I-4	SR 472	SR 44	Widen to 8 Lanes	PD&E
I	SR 40	SR 19	SR 15	Widen to 4 Lanes	PD&E
J**	SR 400 I-4 E	SR 15/600 (US 17/92)	1/2 Mile E of SR 472	Widen to 10 Lanes	Right-of-Way
	SR 472	Graves Avenue	Kentucky / MLK Boulevard	Widen to 6 Lanes	-
	Rhode Island Extension	Veterans Memorial Parkway	Normandy Boulevard	New 2-lane Segment	-
	Saxon Boulevard	I-4	Normandy Boulevard	Widen to 6 Lanes	-
	I-4	At Saxon Boulevard		Interchange/Ramp Improvement	-
	I-4	At Dirksen Drive		Interchange/Ramp Improvement	-

\*\* It is anticipated that the improvements to I-4 within the SR 400 I-4 E from SR 15/600 (US 17/92) to 1/2 Mile E of SR 472 project limits will include the associated projects listed with Map ID J, as well as the widening of the St. John's River Bridge.

# Strategic Intermodal System (SIS)

Map ID	Facility	From	To	Description	Phases Funded (2031-2050)
K	I-95	Palm Coast Parkway	Flagler/St. Johns County Line	Widen to 8 Lanes	PD&E
L	I-95	SR 421	US 1	Widen to 10 Lanes	PD&E
M	I-95	At SR 44		Interchange Improvement	PD&E
-	I-95 Truck Parking Study	Indian River Boulevard/ Brevard County Line	Flagler/St. Johns County Line	Truck Parking Study	Planning Study

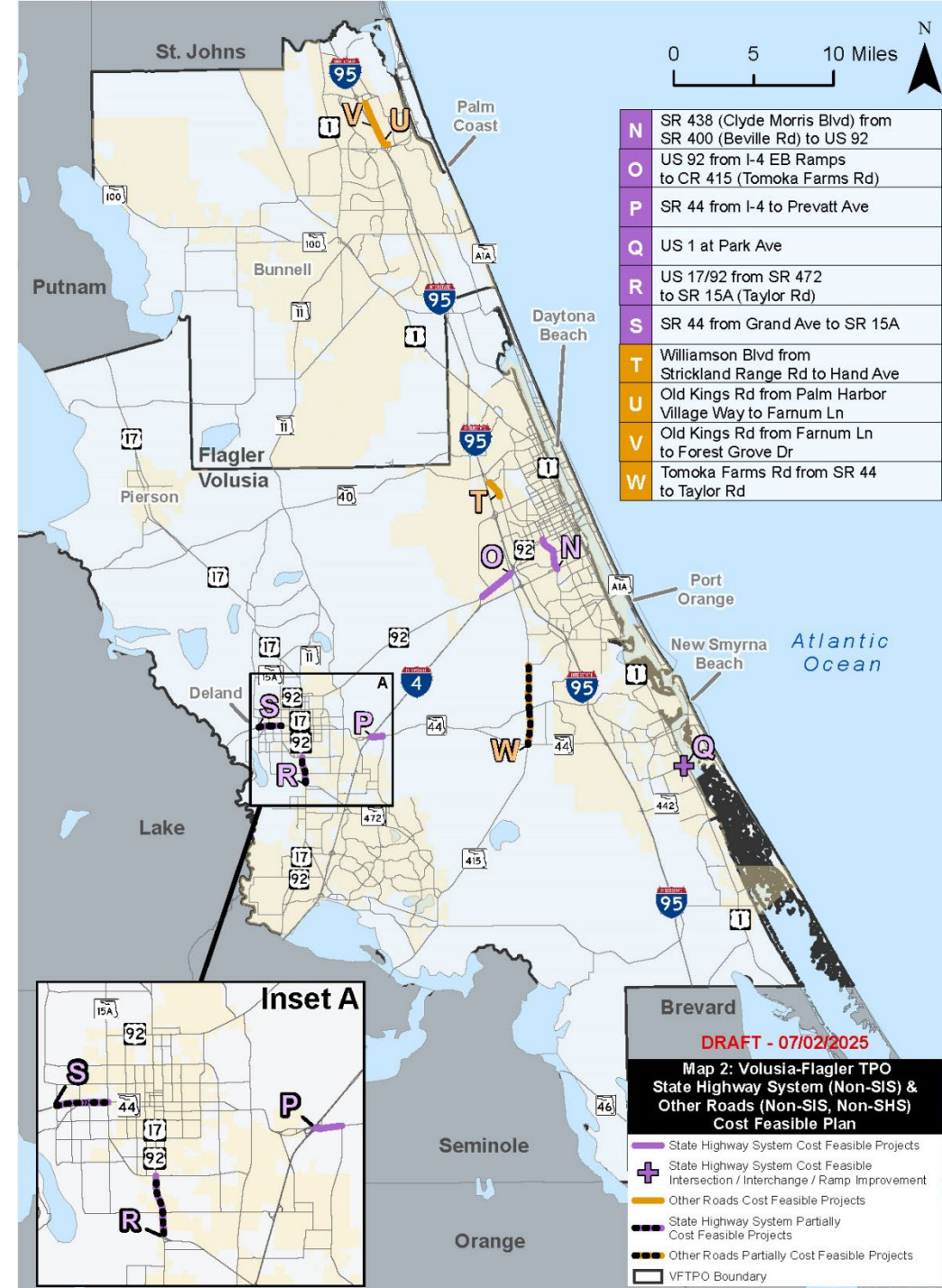
# Federal/State Revenues

<b>Estimates Specific to Volusia-Flagler TPO – For Roadway Capacity Projects</b>	<b>2050 LRTP (2031-2050) (\$YOE)</b>	<b>2050 LRTP (2031-2050) (\$PDV)</b>
State Highway System (non-SIS)	<b>\$102,220,000</b>	<b>\$62,290,690</b>
State Highway System (non-SIS) SHS Product Support (PD&E, PE Activities)	<b>\$22,488,000</b>	<b>\$13,703,952</b>
Other Roads (Non-SIS/non-SHS) – “Off System”	<b>\$53,930,000</b>	<b>\$32,861,493</b>
Other Roads (Non-SIS, Non-SHS) Product Support (PD&E, PE Activities)	<b>\$11,864,000</b>	<b>\$7,229,529</b>
Surface Transportation Block Grant – Any Area (SA) <i>Estimated Allocation to Volusia-Flagler TPO*</i>	<b>\$177,200,000</b>	<b>\$108,490,396</b>
<b>2031-2050 Total</b>	<b>\$367,702,000</b>	<b>\$224,666,060</b>

*\*Based on Volusia-Flagler TPO proportion of total population within FDOT District Five*

# State Highway System (Non-SIS) *and* Other Roads (Non-SIS, Non-SHS)

- Major non-SIS corridors on the State Highway System (SHS)
- Other Roads not on SIS or SHS (e.g., county and municipal roads)
- \$20 million allocated for Local Initiative projects on the SHS through 2050 to support:
  - Complete Streets projects
  - Roundabouts
  - Advanced technology projects
  - Other programmatic improvements aligned with plan goals



# State Highway System (Non-SIS)

Map ID	Facility	From	To	Description	Phases Funded (2031-2050)	2050 LRTP Status
N	SR 483 (Clyde Morris Boulevard)	SR 400 (Beville Road)	US-92	Corridor Improvements	Construction	Cost Feasible
O	US 92	I-4 EB Ramp	CR 415 (Tomoka Farms Road)	Widen to 6 Lanes	Right-of-Way; Construction	Cost Feasible
P	SR 44	I-4	Prevatt Avenue	Widen to 6 Lanes	Design; Right-of-Way; Construction	Cost Feasible
Q	US 1	At Park Avenue		Intersection Improvement	Right-of-Way; Construction	Cost Feasible
R	US 17/92	SR 472	SR 15A (Taylor Road)	ITS	Right-of-Way	Partially Cost Feasible
S	SR 44	Grand Avenue	SR15A	Widen to 4 Lanes	Design; Right-of-Way	Partially Cost Feasible
-	Local Initiatives			Various	-	Cost Feasible

# Other Roads (Non-SIS, Non-SHS)

Map ID	Facility	From	To	Description	Phases Funded (2031-2050)	2050 LRTP Status
T	Williamson Boulevard	Strickland Range Road	Hand Avenue	Widen to 4 Lanes	PD&E; Design; Right-of-Way; Construction	Cost Feasible
U	Old Kings Road	Palm Harbor Village Way	Farnum Lane	Widen to 4 Lanes	Construction	Cost Feasible
V	Old Kings Road	Farnum Lane	Forest Grove Drive	Widen to 4 Lanes	Construction	Cost Feasible
W	Tomoka Farms Road	SR 44	Taylor Road	Widen to 4 Lanes	PD&E; Design	Partially Cost Feasible



Do you agree with the projects included in the Draft Cost Feasible Plan?

Are there any projects that you feel are missing?

Is there anything you would do to improve the plan?

Is there anything additional that is important to you that we should consider?

**‘Raise Your Hand’ to be recognized or enter your comment/question in the chat.**

Welcome and Instructions

Draft Cost Feasible Plan - PDF

Admin

Select Language  
Powered by Google Translate

**Basemap Type**

Default

Location Search

Filter Comments

Add Comment

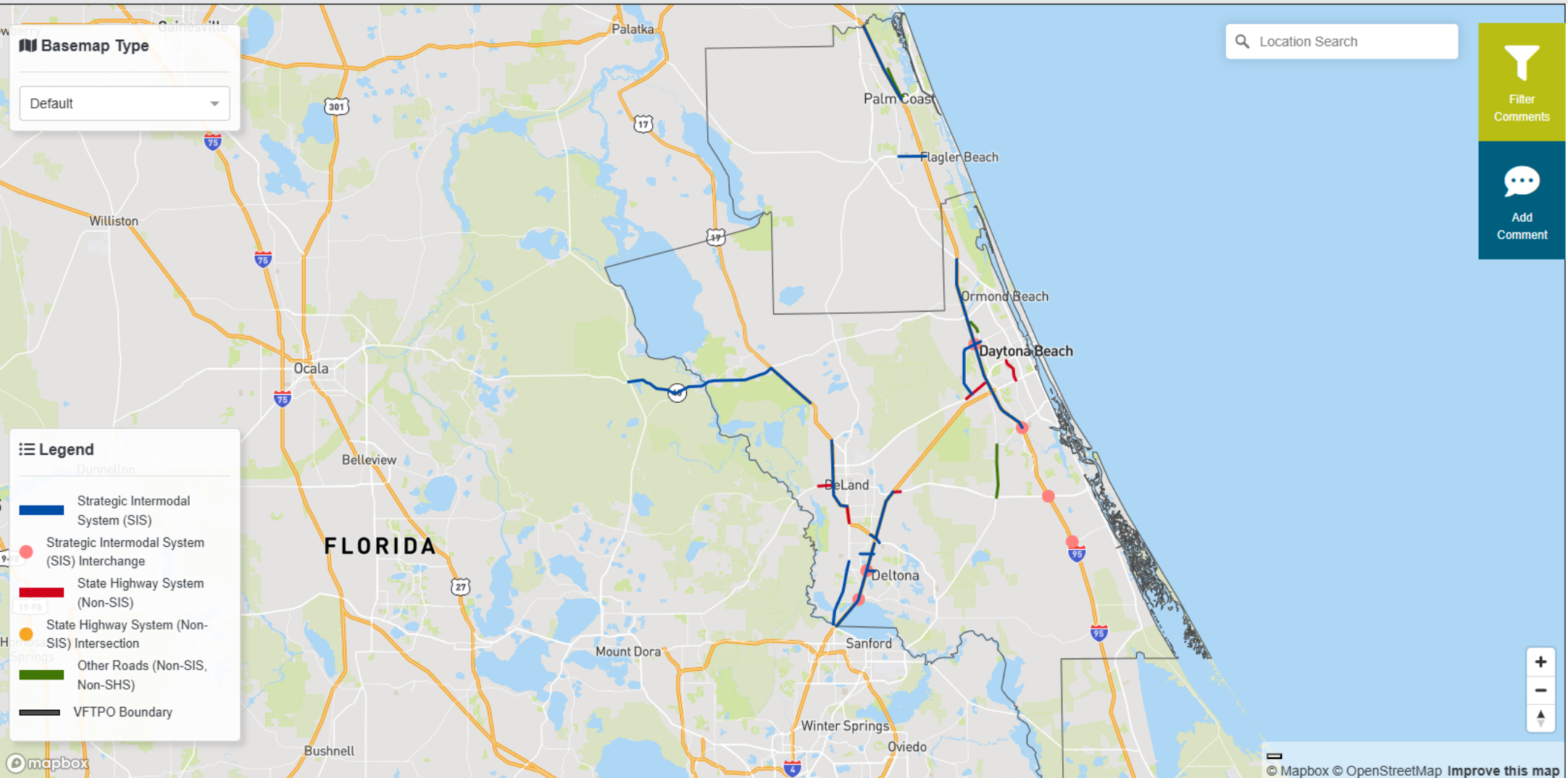
Add Comment

Add Point Comment

Draft Cost Feasible Plan Feedback

**Legend**

- Strategic Intermodal System (SIS)
- Strategic Intermodal System (SIS) Interchange
- State Highway System (Non-SIS)
- State Highway System (Non-SIS) Intersection
- Other Roads (Non-SIS, Non-SHS)
- VFTPO Boundary



© Mapbox © OpenStreetMap Improve this map

# Additional Comments?

**‘Raise Your Hand’ to be recognized or enter your comment/question in the chat.**

**Email comments to:** [staff@r2ctpo.org](mailto:staff@r2ctpo.org)

**Submit comments on the TPO website:**

<https://www.r2ctpo.org/planning-studies/volusia-flagler-2050-long-range-transportation-plan/>

*Please provide any comments on the Draft Cost Feasible Plan prior to **August 1***

# Thank you!

**Learn more and stay up-to-date:**

<https://www.r2ctpo.org/planning-studies/volusia-flagler-2050-long-range-transportation-plan/>

# VOLUSIA FLAGLER 2050

Long Range Transportation Plan



TRANSPORTATION PLANNING ORGANIZATION

## Cost Feasible Plan Virtual Public Meeting

July 10, 2025

