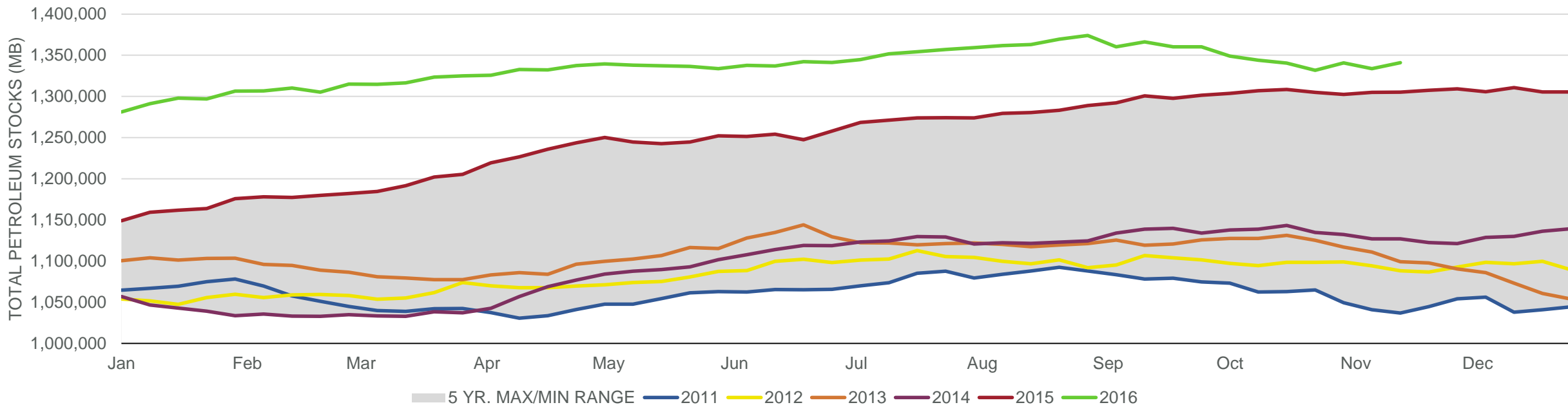




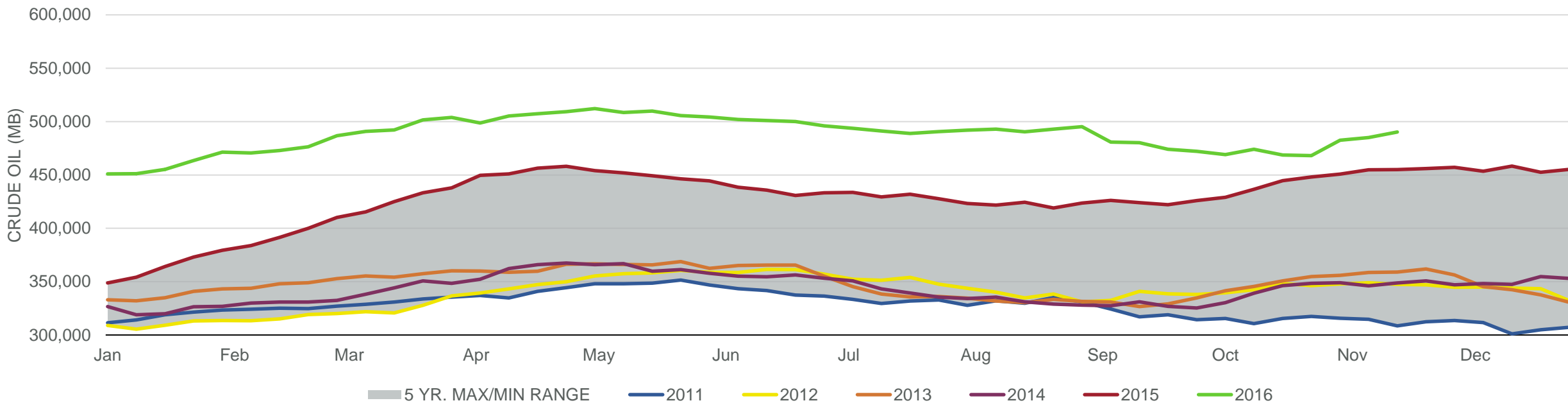
Total Petroleum Stocks



Week Ending	WTI	Change	GC Gaso	Change	NY No 2	Change	Crude	Change	Gasoline	Change	Distillate	Change	Kero	Change	Resid	Change	Total Stocks	Change
10/14/2016	\$50.29	\$0.80	\$1.50	(\$0.02)	\$1.50	\$0.00	468,711	(5,247)	227,967	2,469	155,732	(1,240)	43,699	398	39,292	1,500	1,340,422	(3,581)
10/21/2016	\$50.56	\$0.27	\$1.50	(\$0.00)	\$1.49	(\$0.01)	468,158	(553)	226,011	(1,956)	152,378	(3,354)	43,898	199	38,423	(869)	1,331,684	(8,738)
10/28/2016	\$49.36	(\$1.19)	\$1.45	(\$0.05)	\$1.48	(\$0.01)	482,578	14,420	223,804	(2,207)	150,550	(1,828)	42,422	(1,476)	39,801	1,378	1,340,731	9,047
11/4/2016	\$45.51	(\$3.85)	\$1.42	(\$0.04)	\$1.40	(\$0.08)	485,010	2,432	220,963	(2,841)	148,602	(1,948)	41,924	(498)	39,170	(631)	1,333,766	(6,965)
11/11/2016	\$44.61	(\$0.90)	\$1.30	(\$0.12)	\$1.35	(\$0.05)	490,284	5,274	221,709	746	148,912	310	42,848	924	41,199	2,029	1,340,858	7,092



Commercial Crude Oil Stocks



Week Ending	WTI	Change	Production	Change	Imports	Change	Exports	Change	Capacity	Inputs	Change	Utilization	Crude Oil Stocks	Change
10/14/2016	\$50.29	\$0.80	8,464	14	6,907	(954)	439	(42)	18,125	15,370	(182)	85.0%	468,711	(5,247)
10/21/2016	\$50.56	\$0.27	8,504	40	7,016	109	415	(24)	18,125	15,552	182	85.6%	468,158	(553)
10/28/2016	\$49.36	(\$1.19)	8,522	18	8,995	1,979	404	(11)	18,125	15,448	(104)	85.2%	482,578	14,420
11/4/2016	\$45.51	(\$3.85)	8,692	170	7,442	(1,553)	410	6	18,125	15,817	369	87.1%	485,010	2,432
11/11/2016	\$44.61	(\$0.90)	8,681	(11)	8,423	981	481	71	18,125	16,126	309	89.2%	490,284	5,274