

Farm to Early Care & Education

Abbie Chaddick, MS, RD

Evidence Based Eaters, LLC

Diana Myers, MS, RD, LD

Georgia Department of Early Care & Learning



Abbie Chaddick, MS, RD
Evidence Based Eaters LLC



DECAL's Nutrition Services Vision Statement



Working together with
our partners to
eradicate hunger and
ensure nutritious
meals for all
Georgians!



Non-Discrimination Statement

In accordance with Federal civil rights law and U.S. Department of Agriculture (USDA) civil rights regulations and policies, the USDA, its Agencies, offices, and employees, and institutions participating in or administering USDA programs are prohibited from discriminating based on race, color, national origin, sex, disability, age, or reprisal or retaliation for prior civil rights activity in any program or activity conducted or funded by USDA.

Persons with disabilities who require alternative means of communication for program information (e.g. Braille, large print, audiotope, American Sign Language, etc.), should contact the Agency (State or local) where they applied for benefits. Individuals who are deaf, hard of hearing or have speech disabilities may contact USDA through the Federal Relay Service at (800) 877-8339. Additionally, program information may be made available in languages other than English.

To file a program complaint of discrimination, complete the [USDA Program Discrimination Complaint Form](#) (English) or [USDA Program Discrimination Complaint Form](#) (Spanish) This form (AD-3027) is found online at: <https://www.usda.gov/oascr/how-to-file-a-program-discrimination-complaint> and at any USDA office, or write a letter addressed to USDA and provide in the letter all of the information requested in the form. To request a copy of the complaint form, call (866) 632-9992. Submit your completed form or letter to USDA by:

- (1) Mail: U.S. Department of Agriculture
Office of the Assistant Secretary for Civil Rights
1400 Independence Avenue, SW
Washington, D.C. 20250-9410
- (2) Fax: (202) 690-7442
- (3) Email: program.intake@usda.gov

This institution is an equal opportunity provider.



Who do we have here with us today?

Please enter your **name**,
position, and **county**
served in the chat.



Georgia Dept
of Early Care
and Learning
BRIGHT FROM THE START

Learning Objectives

- Participants can define Farm to Early Care and Education (ECE)
- Participants can name three ways to connect CACFP with Farm to ECE at their site
- Participants know how to access the Getting Started Farm to ECE Toolkit

Farm to Early Care and Education (ECE)

incorporates the three core elements of local procurement, gardens, and food and agriculture education to advance health and wellbeing, engage families and communities, and enhance the quality of the ECE setting.



Photo Credit: Linden Tree Photography



It can take **eight to ten** exposures before a child learns to **like and prefer a new food.**



Georgia Dept
of Early Care
and Learning
BRIGHT FROM THE START

Reference: Sullivan SA, Birch LL. Pass the sugar, pass the salt- experience dictates preference (1990)

Farm to ECE Components



Photo Credit: Linden Tree Photography



Alignment to Standards & Accreditation

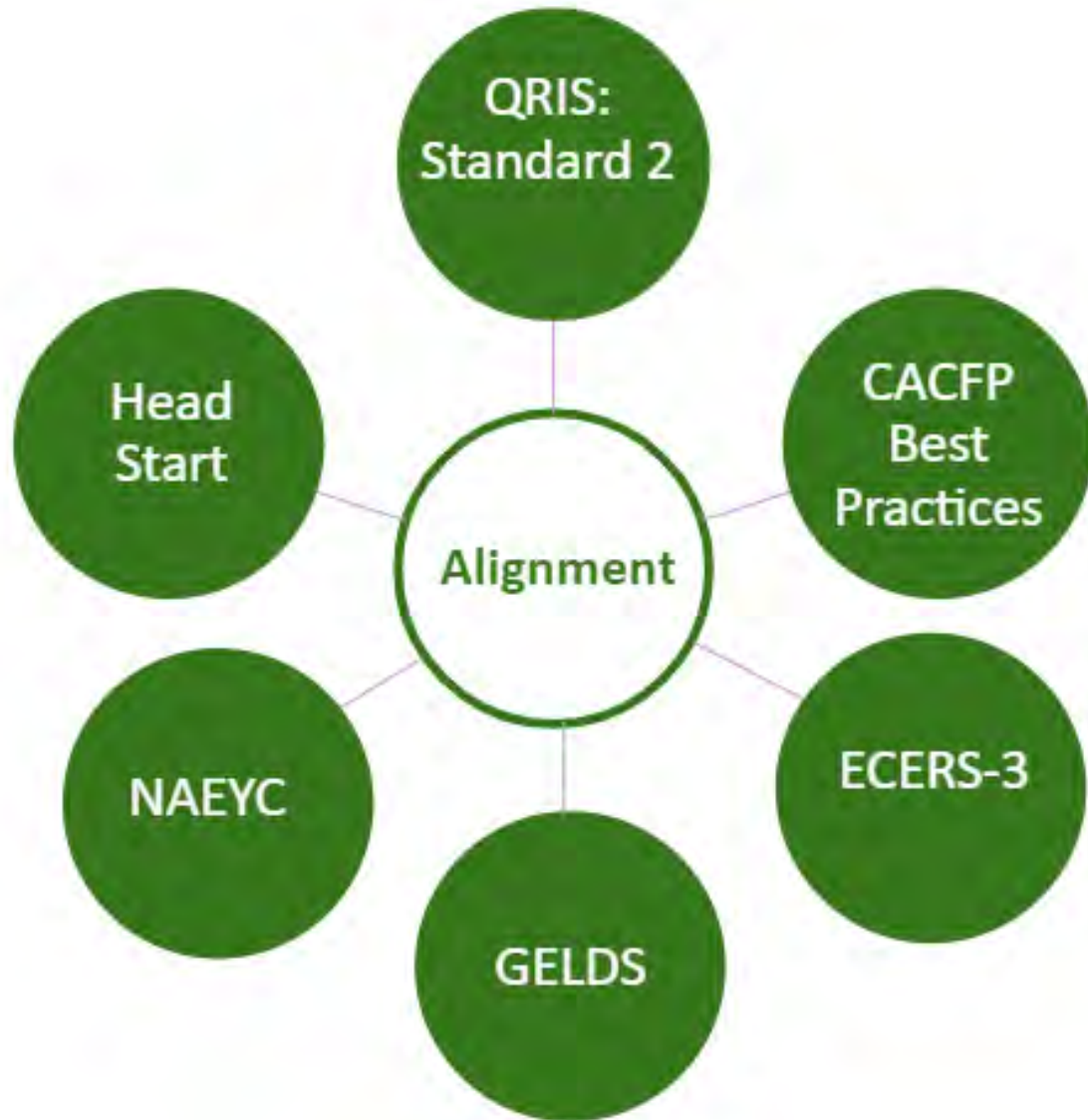
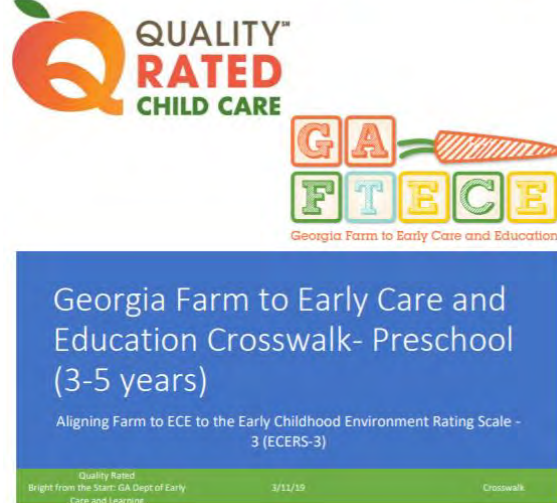


Photo Credit: Linden Tree Photography



Resources for Alignment



Georgia Farm to Early Care and Education Crosswalk

Local Food For Little Eaters in Georgia



Local Food for Little Eaters in Georgia



Georgia Early Learning and Development Standards

Growing Head Start Success with Farm to Early Care and Education





Photo Credit: Linden Tree Photography

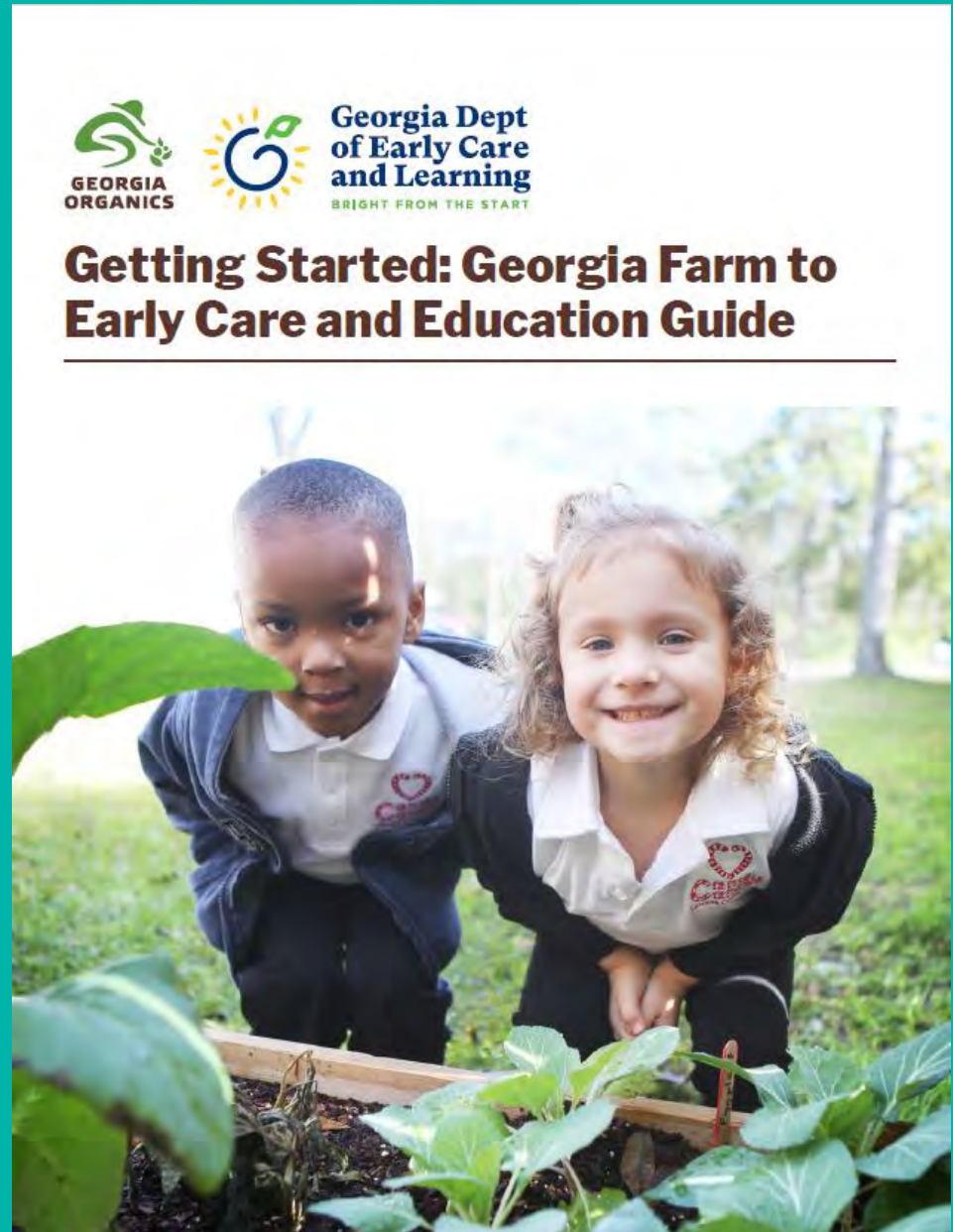
Child and Adult Care Food Program: Best Practices

- Make at least 1 of the 2 required components of a snack a vegetable or a fruit.
- Serve a variety of fruits and choose whole fruits (fresh, canned, dried, or frozen) more often than juice.
- Incorporate seasonal and locally produced foods into meals.



Getting Started: Georgia Farm to Early Care & Education Guide

- Overview
- Gardening
- Cooking with Kids
- Purchasing Local
- Family Engagement
- Setting Goals & Action Planning



http://www.decal.ga.gov/documents/attachments/FTECE_GettingStartedGuideInteractive.pdf



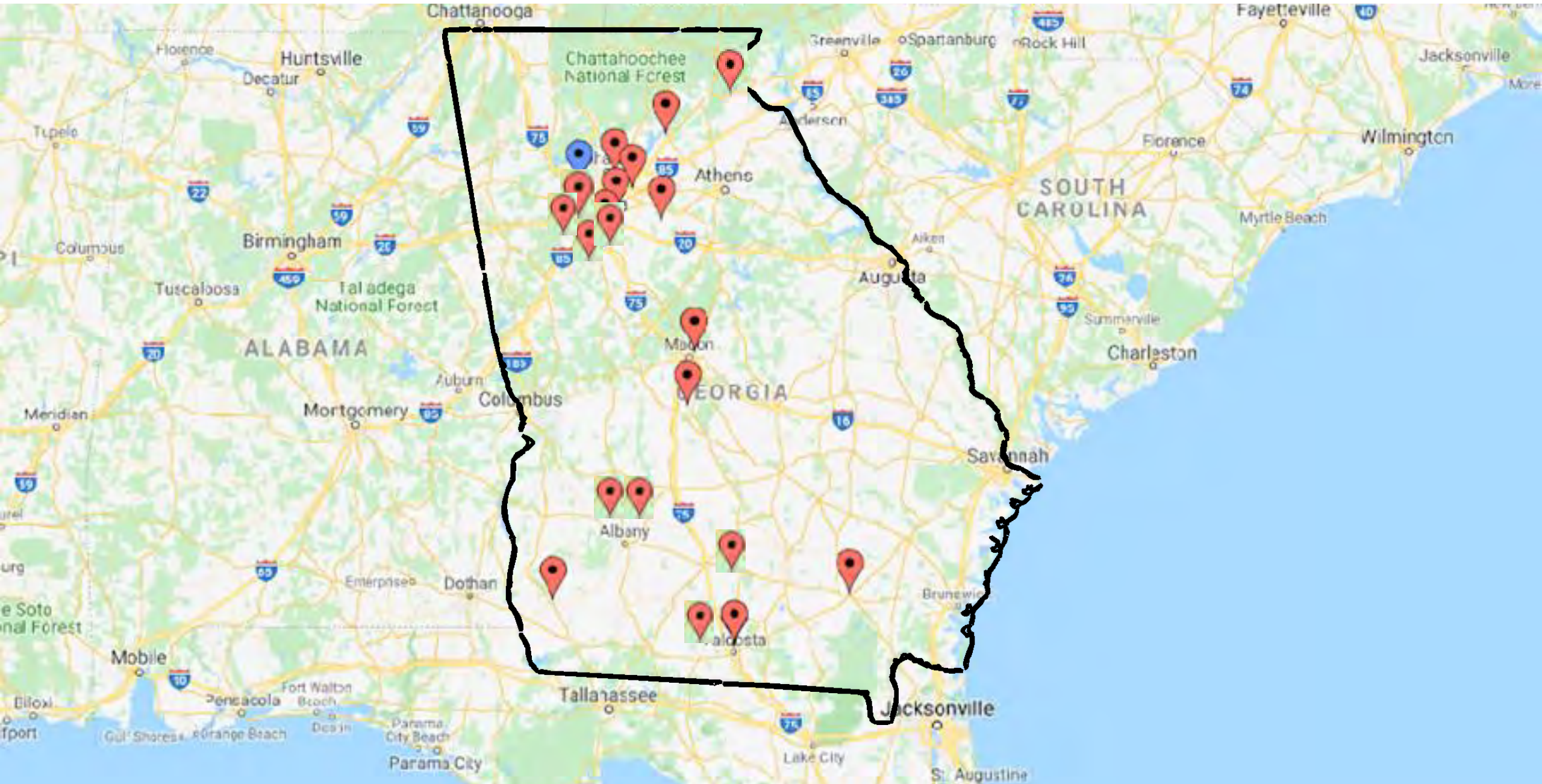
Best Practices and Stories from the Learning Collaborative Sites



Learning Collaborative Sites



A map of the state of Georgia, outlined in black, showing various cities and highways. Red pin markers indicate the locations of Learning Collaborative Sites. The pins are concentrated in the northern and central parts of the state, with a cluster near Atlanta and others scattered throughout. Specific locations marked include Chatahoochee National Forest, Athens, Macon, Albany, and Tallahassee. The map also shows neighboring states: Alabama to the west, South Carolina to the east, and Florida to the south.



Why Farm to ECE....

What I am most proud of...

“ The participation from the kids. We didn’t expect so much excitement. They absolutely loved this program. When they saw how big watermelons had grown, the looks on their faces was amazing.”

“ I can never stop talking about my community... For me to.. Have the community so involved with what we’re doing is amazing. The support from them has really, really just been a blessing to me and my family.”

Skills I have learned that will help me in other areas of my work...

“ Social media has been a huge asset for me. There’s stuff I post on the business page that is public... People are aware of what we have going on [and they want to get involved]. ‘Hey, can I come in and read a book?’ ‘Hey, I have a tree full of oranges, can I come in and drop some of them off?’”

“ How to implement a program. How to find resources. Getting community involvement, [and figuring out] ‘how do we sustain this’?”

Staff and Site Buy-in

Make it manageable

Getting buy-in from staff (goodies and training)

Find a FTECE Champion

Patience; let the kids lead the way



Success Story→ Staff and Site Buy-in



A Head Start site makes taste test days a special event. They purchased special “Don’t Yuk the Yum” shirts for staff and their Training and Literacy Specialist dresses as a chef.

Gardens

Start small or even start inside!

Be creative

Know where to find help



Success Story→ Gardens



A Center received a donation of tree trunks to be used as an outdoor classroom, and also has found the garden to be a useful place for students with behavioral issues inside.

Purchasing Local Food

Start with one local product

Build relationships

Develop menus to allow for flexibility with produce in recipes to account for seasonality



Success Story → Local Procurement



Rural ECE center found a unique source of local produce in a local college.

Success Story → Bringing it all Together



A Family Child Care Learning Home serves fresh, organic foods to her six students. She grows a large vegetable garden which is incorporated into the students' curriculum and daily activities.

Save the Date!

Save the date for the eighth annual **Georgia Farm to School and Early Care and Education Summit** to be held virtually from **Tuesday, April 27 through Saturday, May 1**. This event is hosted by [Georgia Organics](#) and the [Georgia Department of Early Care and Learning](#).

Registration opens on March 29. For more information, visit:

<https://farmtoschool.georgiaorganics.org/summit>.



SAVE THE DATE

Eighth Georgia Farm to School and Early Care and Education VIRTUAL SUMMIT
April 26 - May 1

HOSTED BY:

  **Georgia Dept of Early Care and Learning**
BRIGHT FROM THE START

PRESENTED BY:

  **GA FTECE**
Georgia Farm to Early Care and Education

farmtoschool.georgiaorganics.org/summit





Questions?



**Georgia Dept
of Early Care
and Learning**
BRIGHT FROM THE START